

# U.S. PUBLIC LAND SURVEY MONUMENT RECORD - GRANT COUNTY, WI

Section 24, Town 5 North Range 4 West, Town of Little Grant (a)

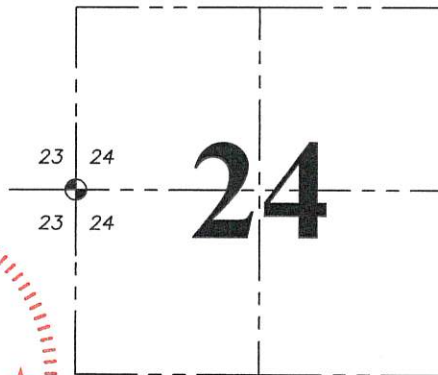
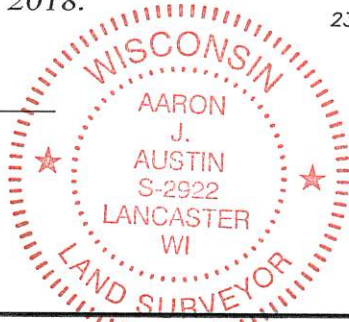
NOTE: This form is intended and designed to fulfill all requirements of the Wisconsin Administrative Code Chapter A-E 7.08, U.S. Public Land Survey Monument Record (3) (a) (b) (c) (d) (e) (f) (g) (h) (i).

**CERTIFICATE: (i)**

I, Aaron J. Austin, Wisconsin Professional Land Surveyor, do hereby certify that the corner location on this record was determined by me and/or under my direct supervision and that this U.S. Public Land Survey Monument Record is correct and complete to the best of my knowledge and belief.

Dated this 2nd day of November, 2018.

*Aaron J. Austin*  
Aaron J. Austin, S-2922



☉ = CORNER LOCATION

Grant County Coordinates:  
NAD 83 (2011)  
Northing: 540,608.10  
Easting: 794,043.98

HISTORY OF CORNER ESTABLISHMENT:

Harvey Parke set the original corner in 1833.

DESCRIPTION OF CORNER EVIDENCE FOUND: (b) (f) (g) (h)

I found a bearing tree with wire going through it and remnants of a fence to the West. I reset the corner at the recorded distance of 1.92 chains from the tree. I verified the monument's location with G.P.S. and E.D.M. methods.

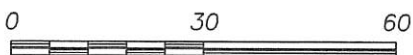
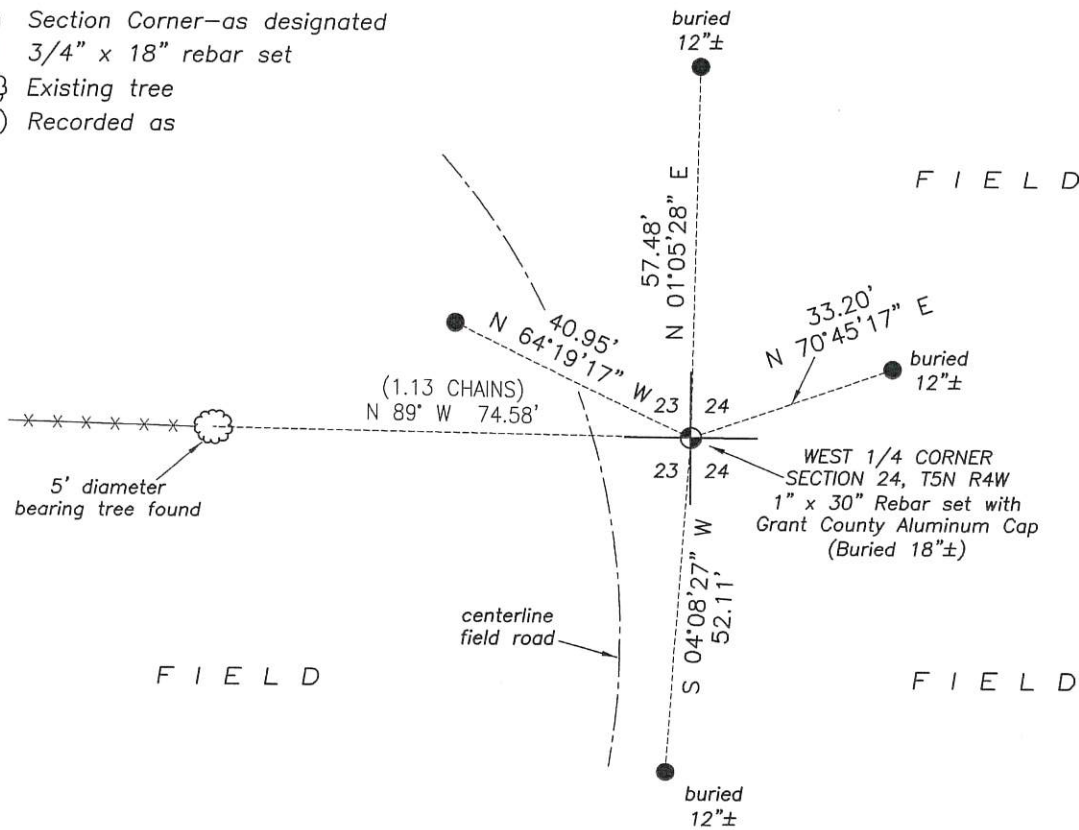
DESCRIPTION OF CORNER AND WITNESS MONUMENTS, references and accessories used to perpetuate the original or re-established location of this corner. (c) (d) (e)

Witnesses to corner location Shane Austin, Owen Austin.

SKETCH:

## LEGEND

- ☉ Section Corner—as designated
- 3/4" x 18" rebar set
- ☼ Existing tree
- ( ) Recorded as



SCALE 1" = 30'