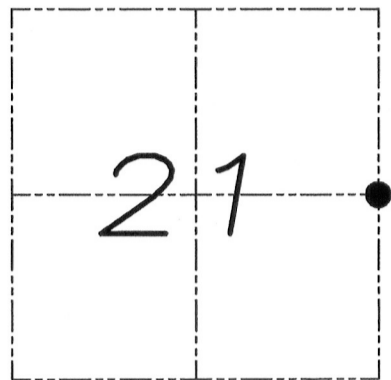


U.S. PUBLIC LAND SURVEY MONUMENT RECORD

Section 21, Town 5 North Range 4 West, Town of Little Grant, Grant County, Wisconsin

CERTIFICATE

I, Larry L. Austin, do hereby certify that the corner location on this record was determined by me and/or under my direct supervision and that this U.S. public land survey monument record is correct and complete to the best of my knowledge and belief.



● = CORNER LOCATION

Larry L. Austin
Larry L. Austin, S-1903



HISTORY OF CORNER

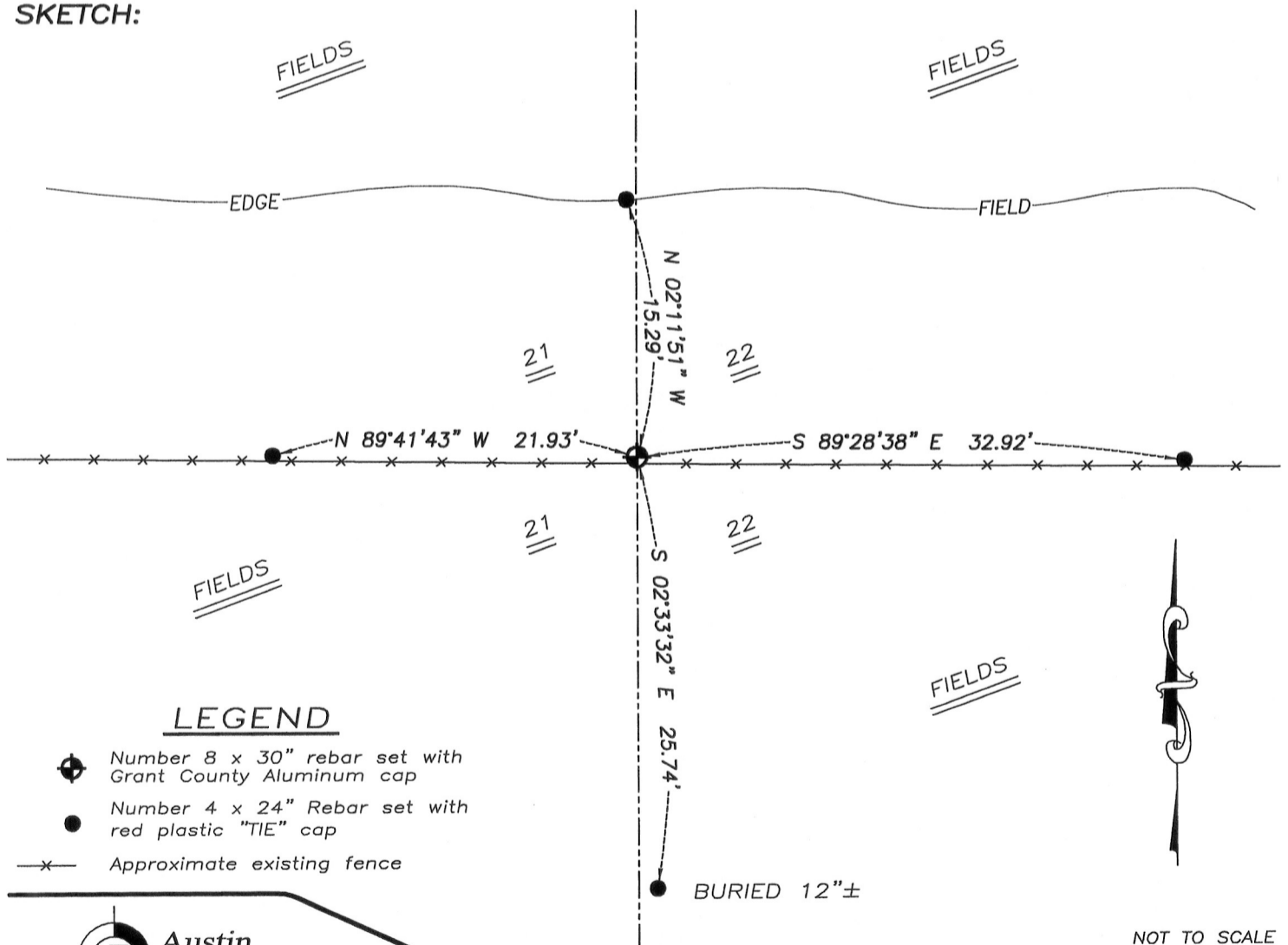
Corner was originally set in 1832 by Harvey Parke. In 1857 Whitney Hayden tied to the original corner. No other record of the corner was found.

CORNER EVIDENCE FOUND

I reset the corner in an East-West fence for the Northing location. The Easting was established based upon an occupied Northeast and a monumented Southeast corner of Section 21. I verified this location based using EDM and GPS methods.

DESCRIPTION OF CORNER AND WITNESS MONUMENTS, references and accessories used to perpetuate the original or re-established location of this corner. Witnesses to monument location Bobby Sedgwick & Brad Digman & Shane Austin

SKETCH:



LEGEND

- Number 8 x 30" rebar set with Grant County Aluminum cap
- Number 4 x 24" Rebar set with red plastic "TIE" cap
- x- Approximate existing fence

NOT TO SCALE



Austin Engineering LLC
austinengineeringllc.com

4211 HWY 81 E, LANCASTER, WI 53813
PHONE: 608-723-6363 FAX: 608-723-6702

JOB NUMBER 09S185-SCHMIDT
FIELDBOOK: TDSR, 2904
G:\T5NR4W\28
H:\TIE\T5NR4W\77

DRAWN BY: SW AUSTIN
APPROVED: LL AUSTIN

77

JAN 23 2012