

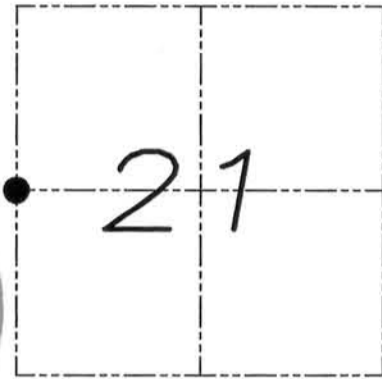
# U.S. PUBLIC LAND SURVEY MONUMENT RECORD

Section 21, Town 5 North Range 4 West, Town of Little Grant, Grant County, Wisconsin

## CERTIFICATE

I, Larry L. Austin, do hereby certify that the corner location on this record was determined by me and/or under my direct supervision and that this U.S. public land survey monument record is correct and complete to the best of my knowledge and belief.

*Larry L. Austin*  
Larry L. Austin, S-1903



● = CORNER LOCATION

## HISTORY OF CORNER

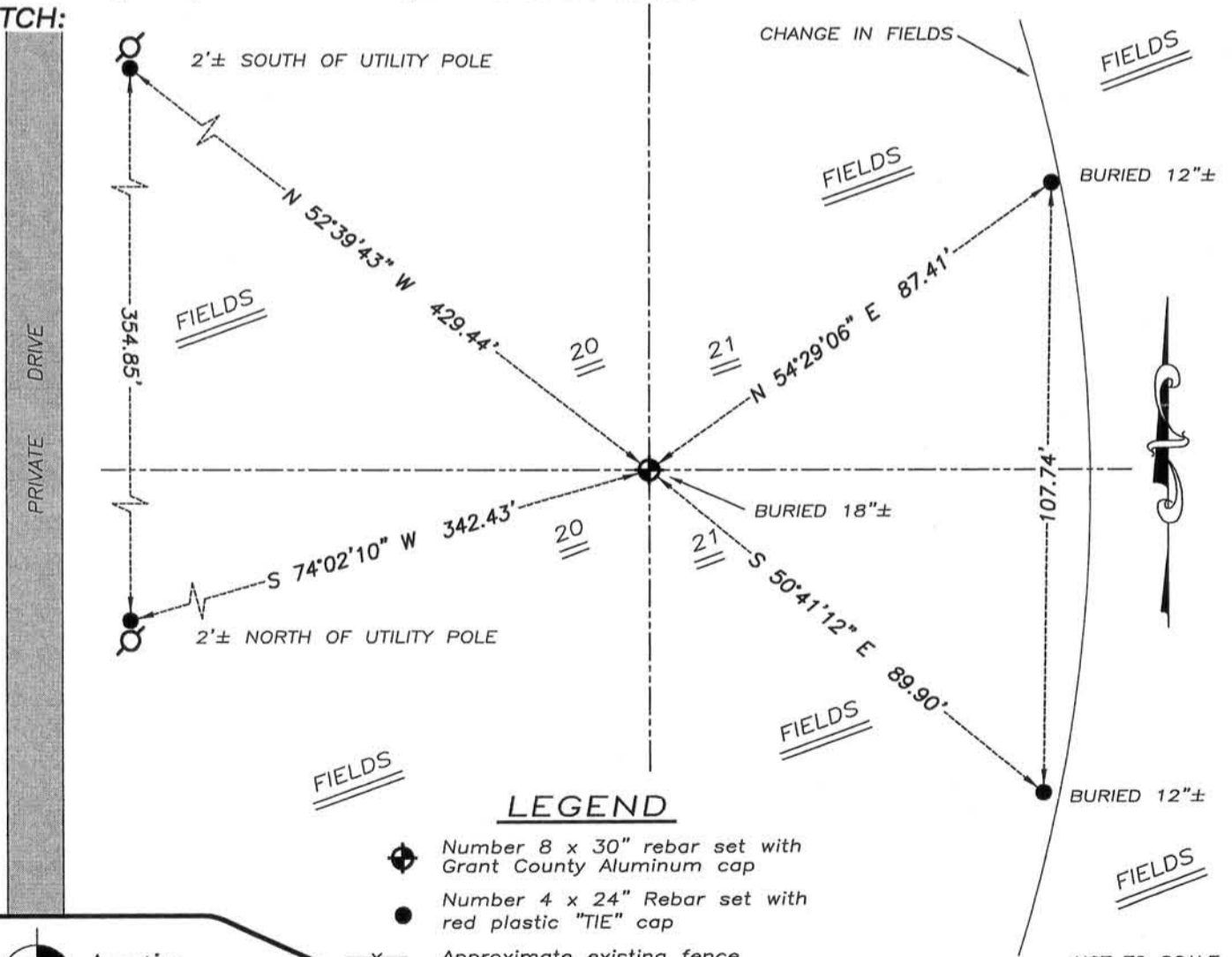
Corner was originally set in 1833 by Harvey Parke. In 1857 Whitney Hayden tied to the original corner. No other record of the corner was found.

## CORNER EVIDENCE FOUND

No evidence of the original corner could be found. I reset the corner proportionally between the Northwest and Southwest corners and I verified its location by EDM and GPS methods.

DESCRIPTION OF CORNER AND WITNESS MONUMENTS, references and accessories used to perpetuate the original or re-established location of this corner. Witnesses to monument location Bobby Sedgwick & Brad Digman & Shane Austin

## SKETCH:



NOT TO SCALE



**Austin Engineering LLC**

austinengineeringllc.com

4211 HWY 81 E, LANCASTER, WI 53813  
PHONE: 608-723-6363 FAX: 608-723-6702

JOB NUMBER 09S185-SCHMIDT  
FIELDBOOK: TDSR, 2904  
G:\T5NR4W\28  
H:\TIE\T5NR4W\76

DRAWN BY: SW AUSTIN  
APPROVED: LL AUSTIN

76

JAN 23 2012

# U.S. PUBLIC LAND SURVEY MONUMENT RECORD

Section 21, Town 5 North Range 4 West, Town of Little Grant, Grant County, Wisconsin

## CERTIFICATE

I, Larry L. Austin, do hereby certify that the corner location on this record was determined by me and/or under my direct supervision and that this U.S. public land survey monument record is correct and complete to the best of my knowledge and belief.

*Larry L. Austin*  
 Larry L. Austin, S-1903



● = CORNER LOCATION

## HISTORY OF CORNER

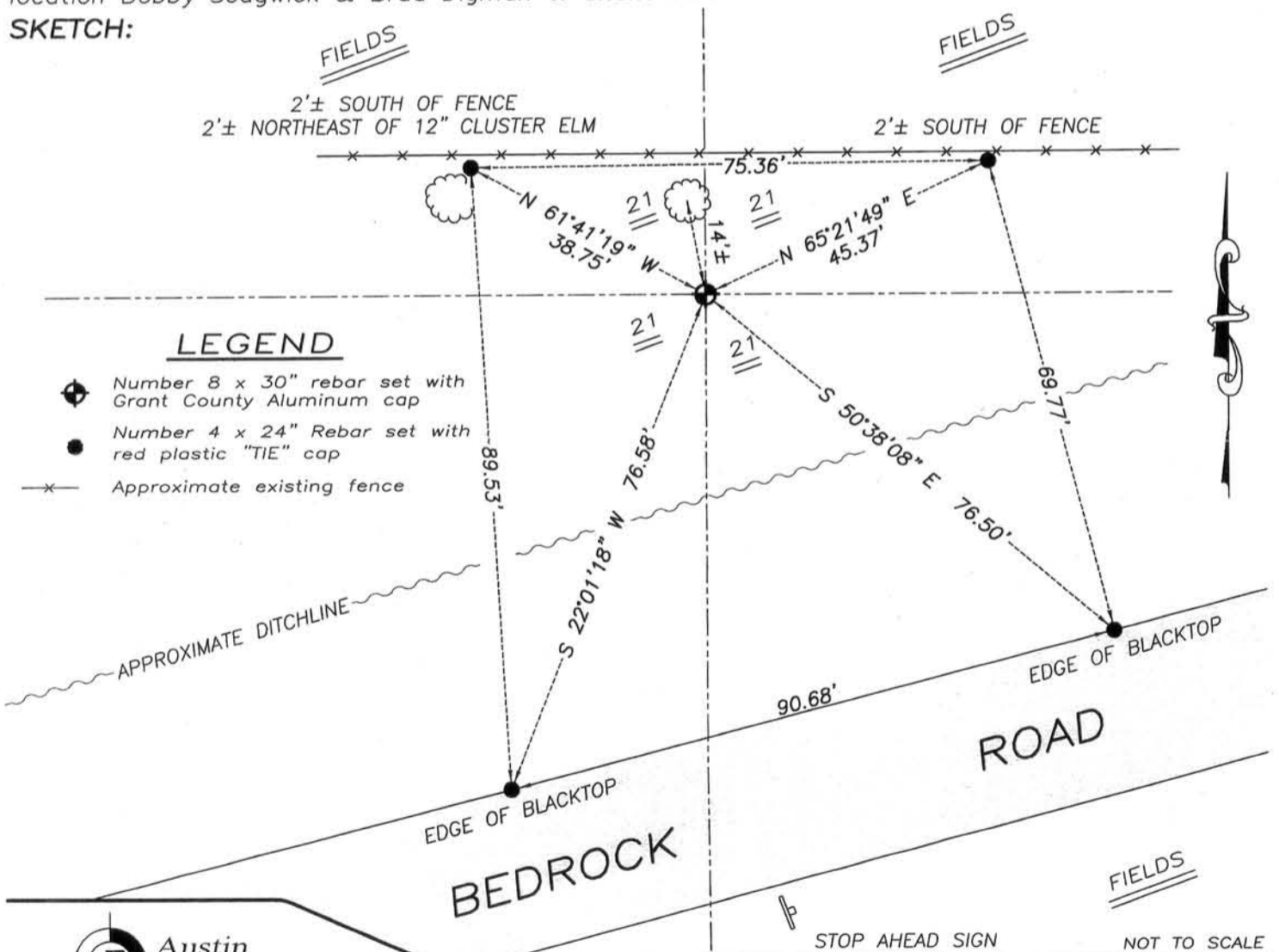
Corner was never originally set. In March of 1857, William Reed set the corner equidistant between the East and West Quarter corners of Section 21. No record of the corner was found.

## CORNER EVIDENCE FOUND

I reset the corner at equal distance between the East 1/4 corner and West 1/4 corner and verified this location using EDM and GPS methods.

DESCRIPTION OF CORNER AND WITNESS MONUMENTS, references and accessories used to perpetuate the original or re-established location of this corner. Witnesses to monument location Bobby Sedgwick & Brad Digman & Shane Austin

## SKETCH:



**Austin Engineering LLC**  
 austinengineeringllc.com  
 4211 HWY 81 E, LANCASTER, WI 53813  
 PHONE: 608-723-6363 FAX: 608-723-6702

JOB NUMBER 09S185-SCHMIDT  
 FIELDBOOK: TDSR, 2904, 2601  
 G:\T5NR4W\28  
 H:\TIE\T5NR4W\76A

DRAWN BY: SW AUSTIN  
 APPROVED: LL AUSTIN

76A

JAN 23 2012