

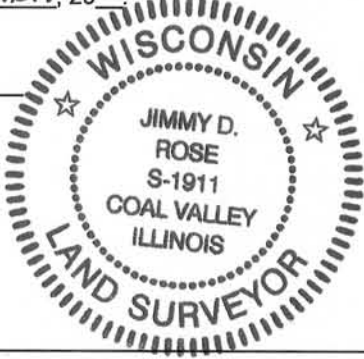
**U.S. PUBLIC LAND SURVEY MONUMENT RECORD - GRANT COUNTY, WI**  
 Section 17, Town 5 North Range 4 West, Town of Little Grant

**CERTIFICATE:**

I, Jimmy D. Rose, do hereby certify that the corner location on this record was determined by me and/or under my direct supervision and that this U.S. Public Land Survey Monument Record is correct and complete to the best of my knowledge and belief.

Dated this 12<sup>th</sup> day of November, 2012

*Jimmy D. Rose*  
 Jimmy D. Rose S-1911



● =CORNER LOCATION

**HISTORY OF CORNER ESTABLISHMENT:** I BEAM CORNER POST FOUND AND ACCEPTED BY LARRY AUSTIN JANUARY 1995.

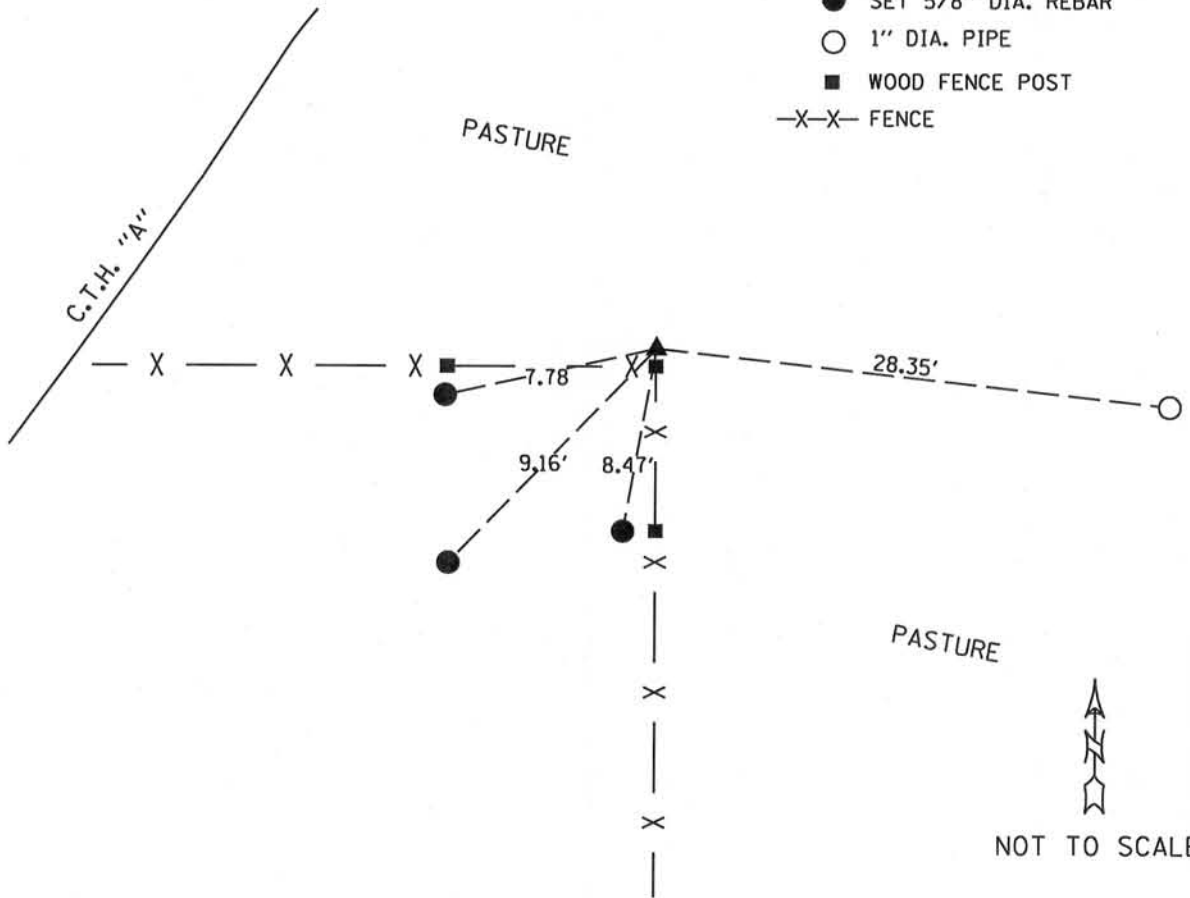
**DESCRIPTION OF CORNER EVIDENCE FOUND:** FOUND FENCE CORNER AND ONE RECORD ACCESSORY TIE. ESTABLISHED CORNER LOCATION USING EVIDENCE AT CORNER AND PRIOR SURVEY TIED TO CORNER. VERIFIED LOCATION WITH TRAVERSE OF SECTION 17.

**DESCRIPTION OF CORNER AND WITNESS MONUMENTS,** references and accessories used to perpetuate the original or re-established location of this corner.

**SKETCH:**

**LEGEND**

- ▲ SET 1" DIA. REBAR W/ GRANT COUNTY MONUMENT CAP
- SET 5/8" DIA. REBAR
- 1" DIA. PIPE
- WOOD FENCE POST
- X-X- FENCE



GRANT COUNTY

Survey Monument Record

TYPE OF MONUMENT I-BEAM POST  
STATE PLANE COORDINATES: N \_\_\_\_\_  
E \_\_\_\_\_  
ELEVATION — M.S.L. DATUM: \_\_\_\_\_  
THETA ANGLE: \_\_\_\_\_  
FIELD BOOK: 94-19  
PAGE: 35

CORNER NO. 70  
SECTION 17  
TOWN 5N  
RANGE 4W  
S 1/4 COR



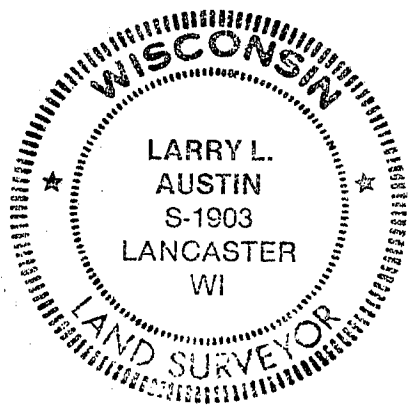
LOCATION  
(Indicated by "X")

BASIS FOR MONUMENT LOCATION

(Use reverse side if necessary)  
Show info such as: History of corner, with reference to Vol. and pg., dates, surveyor; exact description of monument replaced; if location computed, by taped or EDM traverse; landowner, remarks, etc.

SEAL:

NO RECORD OF CORNER  
FOUND SINCE ORIGINAL  
SURVEYS; CORNER LOCATION  
ESTABLISHED BASED ON  
OCCUPATIONAL EVIDENCE  
& VERIFIED BY EDM TRAVERSE

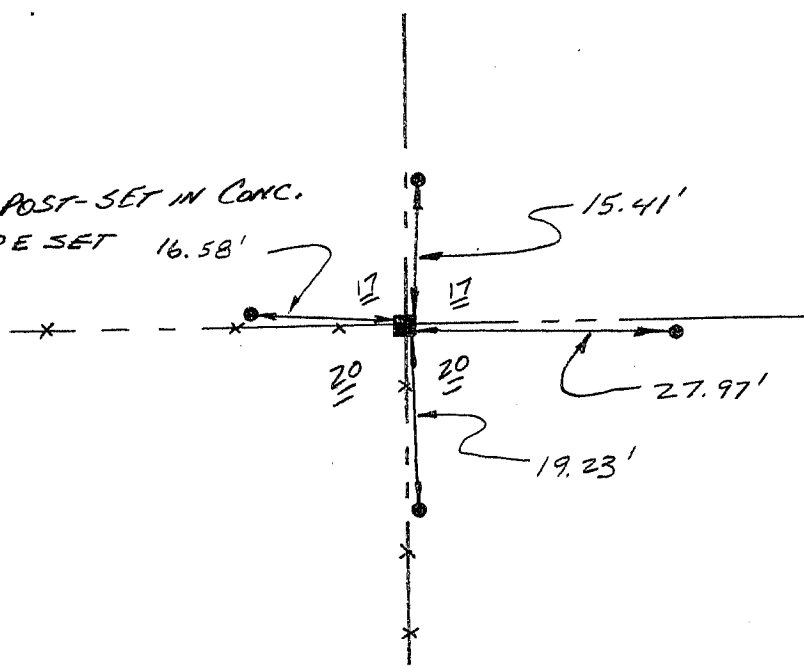


CERTIFIED CORRECT  
Larry L. Austin  
Registered Land Surveyor  
DATE: 1-16-95

TIE SKETCH

Show at least three (3) ties and monument

LEGEND  
FOUND  
■ I BEAM CORNER POST-SET IN CONC.  
● 1" x 12" IRON PIPE SET 16.58'  
\*\* EXISTING FENCE



NO SCALE