

U.S. PUBLIC LAND SURVEY MONUMENT RECORD - GRANT COUNTY, WI

Section 22, Town 5 North Range 4 West, Town of Little Grant (a)

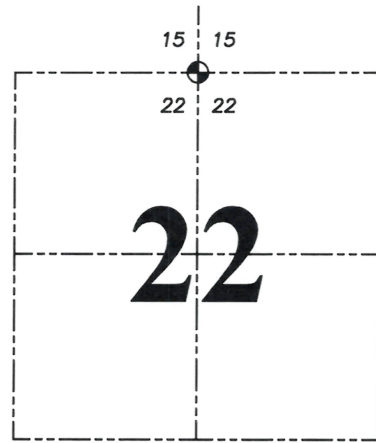
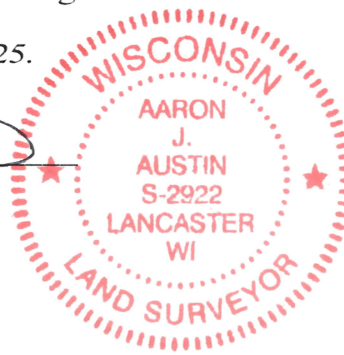
NOTE: This form is intended and designed to fulfill all requirements of the Wisconsin Administrative Code Chapter A-E 7.08, U.S. Public Land Survey Monument Record (3) (a) (b) (c) (d) (e) (f) (g) (h) (i).

CERTIFICATE: (i)

I, Aaron J. Austin, Wisconsin Professional Land Surveyor, do hereby certify that the corner location on this record was determined by me and/or under my direct supervision and that this U.S. Public Land Survey Monument Record is correct and complete to the best of my knowledge and belief.

Dated this 26th day of June, 2025.

Aaron J. Austin
Aaron J. Austin, PLS-2922



⊕ = CORNER LOCATION

Grant County Coordinates:
NAD 83 (2011)
Northing: 543,319.21
Easting: 786,074.76

HISTORY OF CORNER ESTABLISHMENT:

Original corner was set in 1833 by Harvey Parke. I found no other evidence of this being set.

DESCRIPTION OF CORNER EVIDENCE FOUND: (b) (f) (g) (h)

I set a 1" x 24" Rebar midway and online between the Northwest corner and Northeast corner of Section 22. I set four witness corner and verified the Monument's location with G.P.S. and E.D.M. methods.

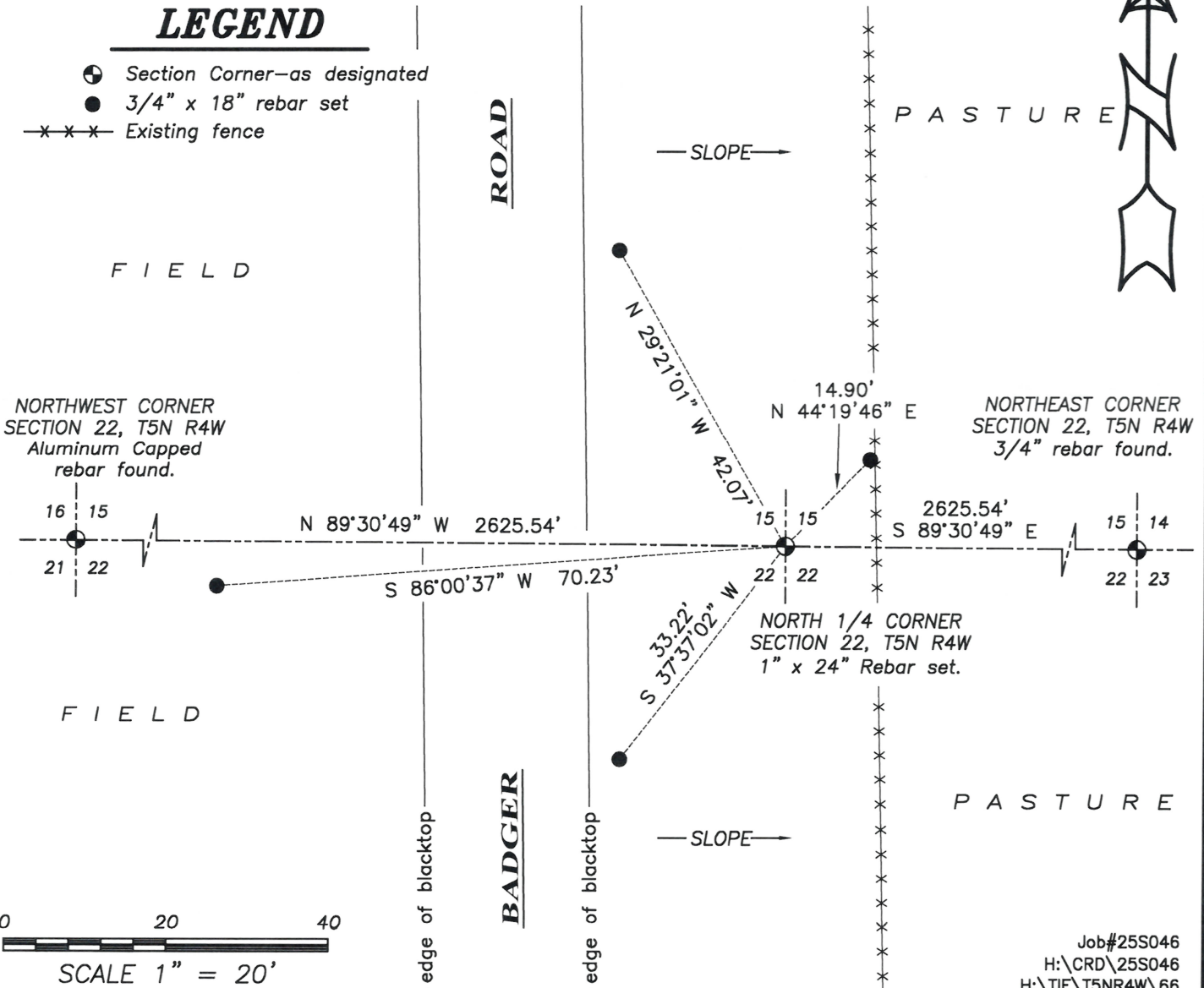
DESCRIPTION OF CORNER AND WITNESS MONUMENTS, references and accessories used to perpetuate the original or re-established location of this corner. (c) (d) (e)

Witnesses to corner location Owen Austin, Tanner Austin.
Drawn by: Owen Austin.

SKETCH:

LEGEND

- ⊕ Section Corner—as designated
- 3/4" x 18" rebar set
- x-x-x- Existing fence



0 20 40
SCALE 1" = 20'