

Survey Monument Record

CORNER NO. \_\_\_\_\_

SECTION 14

TOWN 5 NORTH

RANGE 4 WEST

TYPE OF MONUMENT 3/4" X 24" IRON ROD

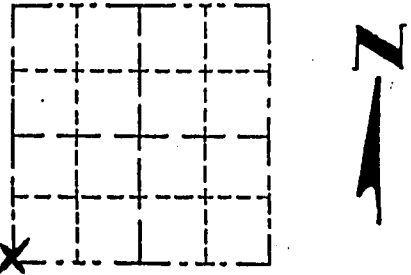
STATE PLANE COORDINATES: N \_\_\_\_\_  
E \_\_\_\_\_

ELEVATION — M.S.L. DATUM: \_\_\_\_\_

THETA ANGLE: \_\_\_\_\_

FIELD BOOK: \_\_\_\_\_

PAGE \_\_\_\_\_



LOCATION  
(Indicated by "X")

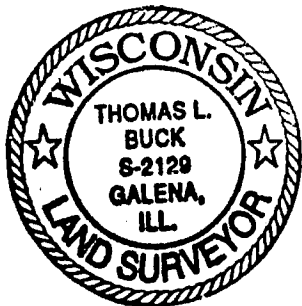
- FOUND PERPETUATED LOCATION
- OBLITERATED EVIDENCE LOCATION
- LOST CORNER (RESTORED BY PROPORTIONATE METHODS)

BASIS FOR MONUMENT LOCATION

(Use reverse side if necessary)

Show info such as: History of corner, with reference to Vol. and pg., dates, surveyor; exact description of monument replaced; if location computed, by taped or EDM traverse; landowner, remarks, etc.

I FOUND NO RECORD OF THIS CORNER SINCE THE ORIGINAL GOVERNMENT SURVEY. I PLACED THIS MONUMENT E-W USING A BEST <sup>FIT</sup> LINE OF OCCUPATION AND N-S USING THE FORTY CORNERS TO THE NORTH + CHECKING TO THE ONE IN THE SOUTH. THIS WAS VERIFIED BY G.P.S. OBSERVATION AND AN E.D.M. TRAVERSE OF SECTIONS 13, 14 + 23.



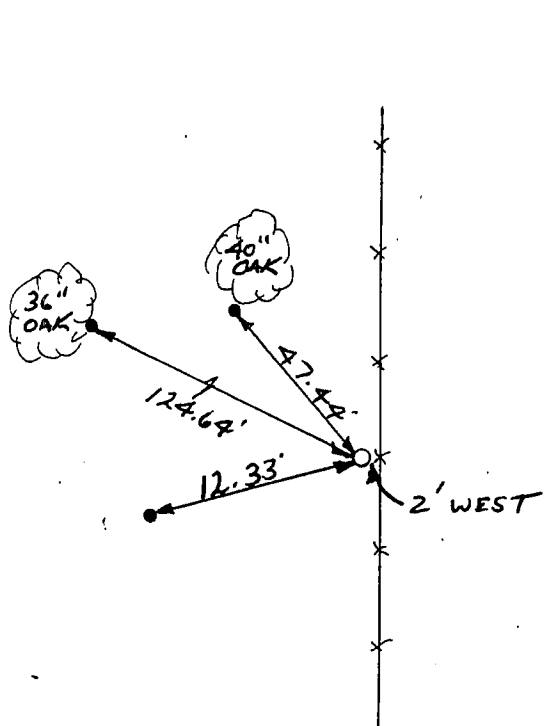
CERTIFIED CORRECT TO THE BEST OF MY KNOWLEDGE AND BELIEF

Thomas L. Buck  
Registered Land Surveyor

DATE: 9/24/98

TIE SKETCH

Show at least three (3) ties and monument



NO SCALE  
LEGEND

○ = 3/4 X 24" IRON ROD

● = 1/2" IRON ROD

—\*— = EXISTING FENCE