

54064

# U.S. PUBLIC LAND SURVEY MONUMENT RECORD - GRANT COUNTY, WI

Section 23, Town 5 North Range 4 West, Town of Little Grant (a)

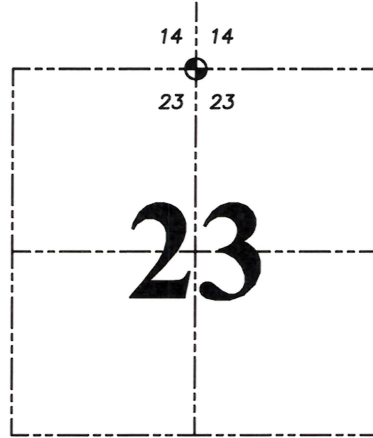
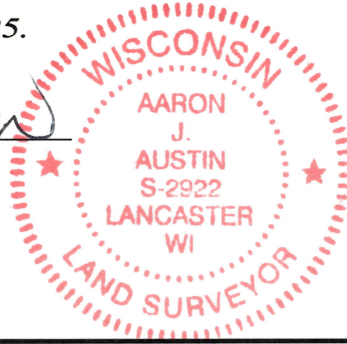
NOTE: This form is intended and designed to fulfill all requirements of the Wisconsin Administrative Code Chapter A-E 7.08, U.S. Public Land Survey Monument Record (3) (a) (b) (c) (d) (e) (f) (g) (h) (i).

**CERTIFICATE:** (i)

I, Aaron J. Austin, Wisconsin Professional Land Surveyor, do hereby certify that the corner location on this record was determined by me and/or under my direct supervision and that this U.S. Public Land Survey Monument Record is correct and complete to the best of my knowledge and belief.

Dated this 26th day of June, 2025.

*Aaron J. Austin*  
Aaron J. Austin, PLS-2922



⊙ = CORNER LOCATION

Grant County Coordinates:  
NAD 83 (2011)  
Northing: 543,289.06  
Easting: 791,339.04

**HISTORY OF CORNER ESTABLISHMENT:**

Original corner was set in 1833 by Harvet Parke.  
Thomas Buck set a 3/4" Rebar and prepared a Survey Monument Record dated 9-24-1998.

**DESCRIPTION OF CORNER EVIDENCE FOUND:** (b) (f) (g) (h)

I found no evidence of the 3/4" Rebar or witness corners Buck set. No survey was found by Thomas Buck in regards to this corner. I set a 1" x 24" Rebar online between the Northwest and the Northeast corners of Section 23 in a North and South fence line. I set four witness corners and verified the Monument's location with G.P.S. and E.D.M. methods.

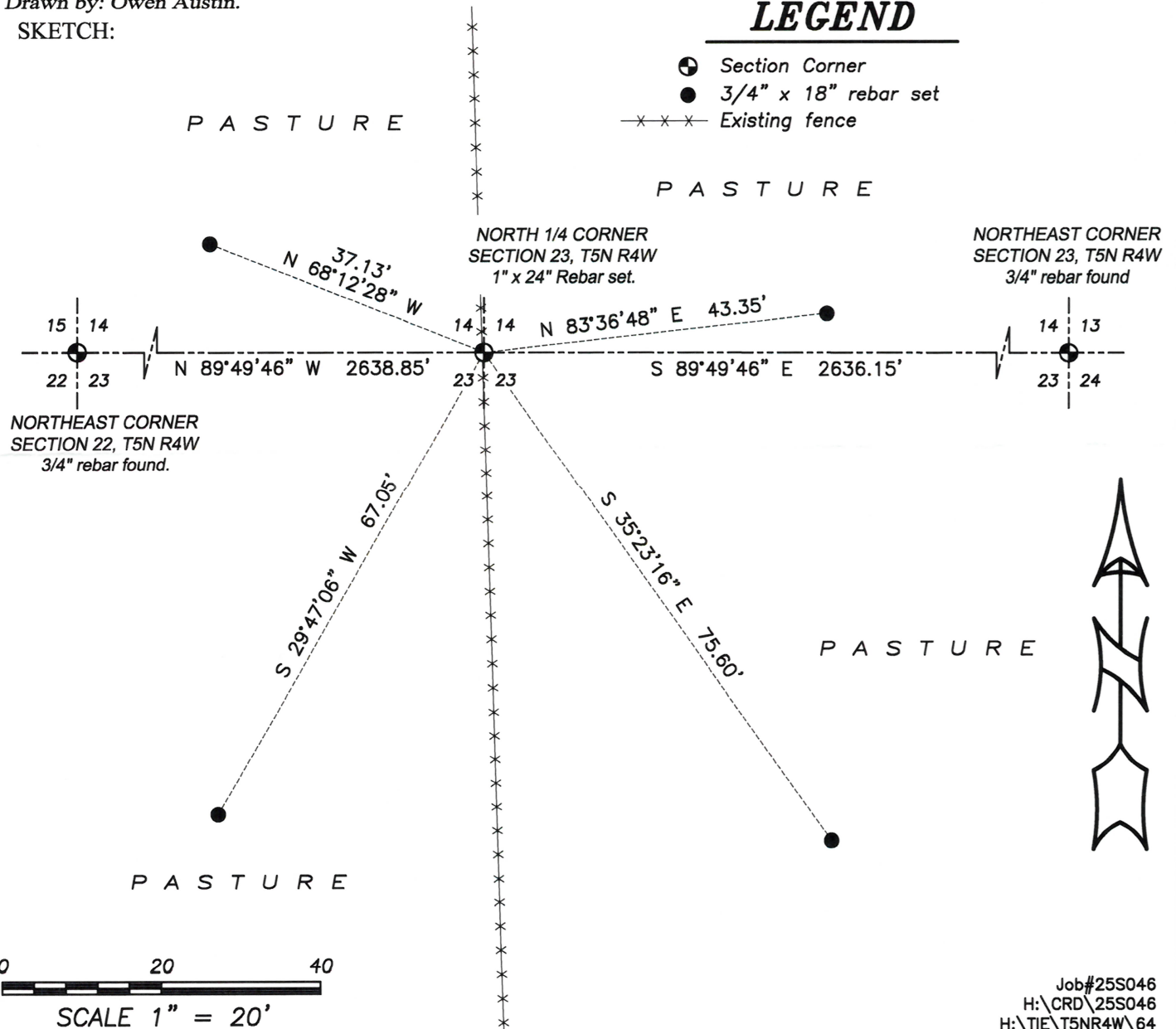
**DESCRIPTION OF CORNER AND WITNESS MONUMENTS,** references and accessories used to perpetuate the original or re-established location of this corner. (c) (d) (e)

Witnesses to corner location Shane Austin.  
Drawn by: Owen Austin.

SKETCH:

## LEGEND

- ⊙ Section Corner
- 3/4" x 18" rebar set
- x-x-x- Existing fence



# Survey Monument Record

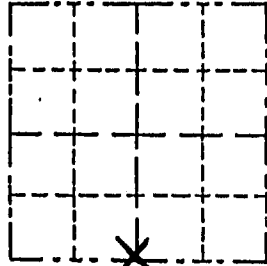
TYPE OF MONUMENT 3/4" X 24" Iron Rod  
 STATE PLANE COORDINATES: N \_\_\_\_\_  
 E \_\_\_\_\_  
 ELEVATION — M.S.L. DATUM: \_\_\_\_\_  
 THETA ANGLE: \_\_\_\_\_  
 FIELD BOOK: \_\_\_\_\_  
 PAGE \_\_\_\_\_

CORNER NO. \_\_\_\_\_  
 SECTION 14  
 TOWN 5 NORTH  
 RANGE 4 WEST

## BASIS FOR MONUMENT LOCATION

(Use reverse side if necessary)

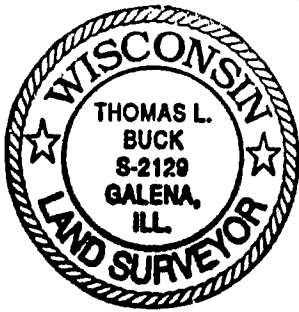
Show info such as: History of corner, with reference to Vol. and pg., dates, surveyor; exact description of monument replaced; if location computed, by taped or EDM traverse; landowner, remarks, etc.



LOCATION  
(Indicated by "X")

- FOUND PERPETUATED LOCATION
- OBLITERATED EVIDENCE LOCATION
- LOST CORNER (RESTORED BY PROPORTIONATE METHODS)

I FOUND NO RECORD OF THIS CORNER SINCE THE ORIGINAL GOVERNMENT SURVEY. I PLACED THIS MONUMENT E-W USING A BEST FIT LINE OF OCCUPATION AND N-S BY USING THE FORTY CORNERS TO THE SOUTH TO CONTROL. THIS WAS VERIFIED BY G.P.S. OBSERVATION AND AN E.D.M. TRAVERSE OF SECTIONS 13, 14 + 23



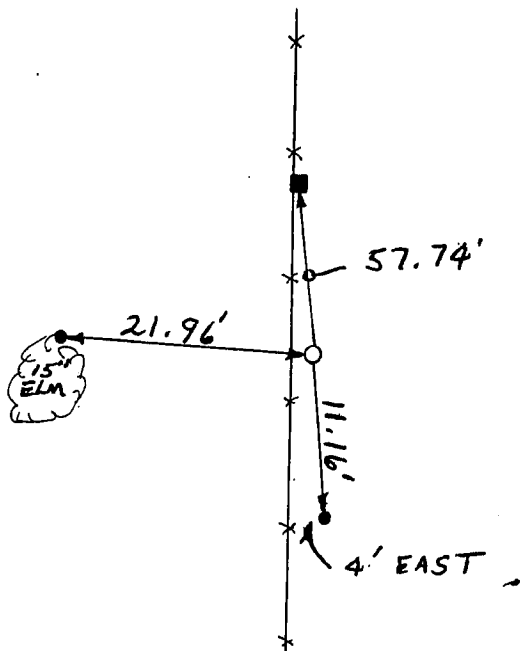
CERTIFIED CORRECT TO THE BEST OF MY KNOWLEDGE AND BELIEF

Thomas L. Buck  
Registered Land Surveyor

DATE: 9/24/98

## TIE SKETCH

Show at least three (3) ties and monument



NO SCALE

LEGEND

- = 3/4" X 24" IRON ROD
- = 1/2" IRON ROD
- = P.K. W/SHINER TOP OF BRACE POST
- X—X— = EXISTING FENCE