

U.S. PUBLIC LAND SURVEY MONUMENT RECORD - GRANT COUNTY, WI

Section 23, Town 5 North Range 4 West, Town of Little Grant (a)

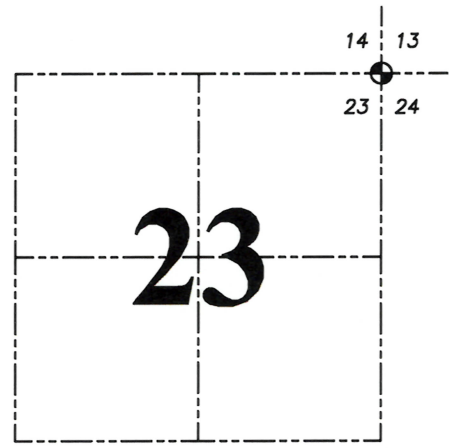
NOTE: This form is intended and designed to fulfill all requirements of the Wisconsin Administrative Code Chapter A-E 7.08, U.S. Public Land Survey Monument Record (3) (a) (b) (c) (d) (e) (f) (g) (h) (i).

CERTIFICATE: (i)

I, Aaron J. Austin, Wisconsin Professional Land Surveyor, do hereby certify that the corner location on this record was determined by me and/or under my direct supervision and that this U.S. Public Land Survey Monument Record is correct and complete to the best of my knowledge and belief.

Dated this 26th day of June, 2025.

Aaron J. Austin
Aaron J. Austin, PLS-2922



⊙ = CORNER LOCATION

Grant County Coordinates:
NAD 83 (2011)
Northing: 543,281.21
Easting: 793,975.18

HISTORY OF CORNER ESTABLISHMENT:

Original corner was set in 1833 by Harvey Parke.
Thomas Buck set a 3/4" Rebar and prepared a Survey Monument Record dated 9-24-1998.

DESCRIPTION OF CORNER EVIDENCE FOUND: (b) (f) (g) (h)

I found the 3/4" Rebar Buck set. I set four witness corners and verified the Monument's location with G.P.S. and E.D.M. methods.

DESCRIPTION OF CORNER AND WITNESS MONUMENTS, references and accessories used to perpetuate the original or re-established location of this corner. (c) (d) (e)

Witnesses to corner location Shane Austin.
Drawn by: Owen Austin.

SKETCH:

P A S T U R E

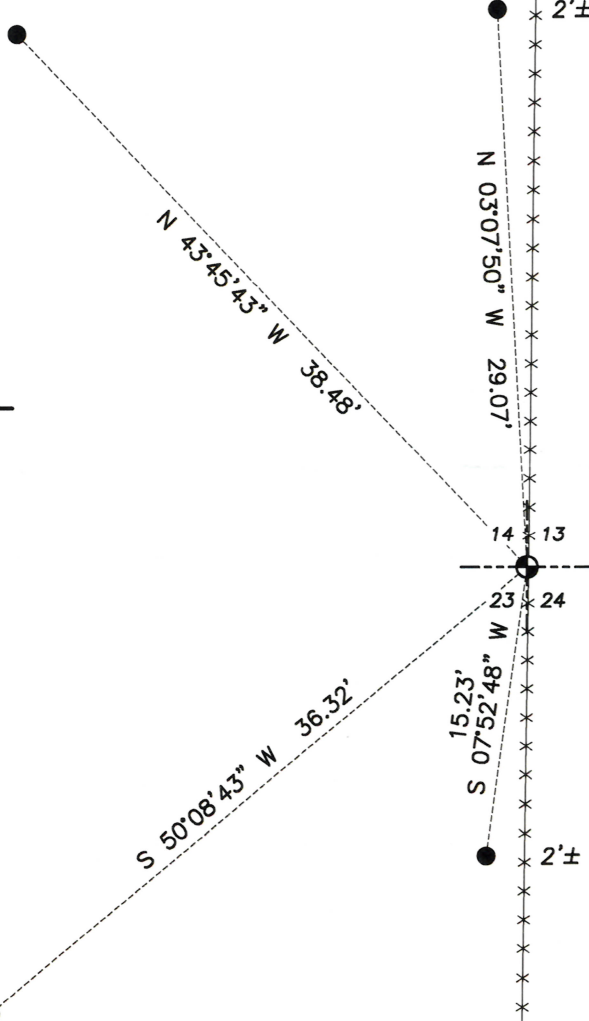
F I E L D

LEGEND

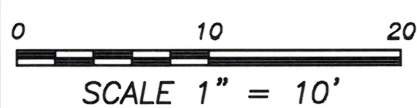
- ⊙ Section Corner
- 3/4" x 18" rebar set
- x-x-x- Existing fence

P A S T U R E

F I E L D



NORTHEAST CORNER
SECTION 23, T5N R4W
3/4" rebar found.



Survey Monument Record

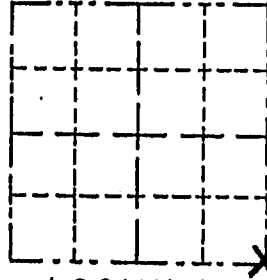
TYPE OF MONUMENT 3/4" X 24" IRON ROD
 STATE PLANE COORDINATES: N _____
 E _____
 ELEVATION — M.S.L. DATUM: _____
 THETA ANGLE: _____
 FIELD BOOK: _____
 PAGE _____

CORNER NO. _____
 SECTION 14
 TOWN 5 NORTH
 RANGE 4 WEST

BASIS FOR MONUMENT LOCATION

(Use reverse side if necessary)

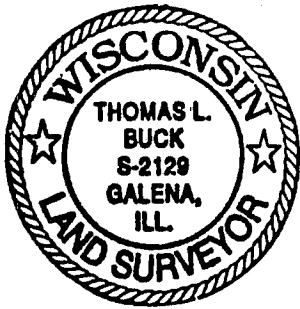
Show info such as: History of corner, with reference to Vol. and pg., dates, surveyor; exact description of monument replaced; if location computed, by taped or EDM traverse; landowner, remarks, etc.



LOCATION
 (Indicated by "X")

- FOUND PERPETUATED LOCATION
- OBLITERATED EVIDENCE LOCATION
- LOST CORNER (RESTORED BY PROPORTIONATE METHODS)

I FOUND NO RECORD OF THIS CORNER SINCE THE ORIGINAL GOVERNMENT SURVEY. THE MONUMENT WAS PLACED IN THE BEST FIT NORTH-SOUTH OCCUPIED LINE AND USING THE FORTY CORNERS IN SECTIONS 14 & 23 TO CONTROL THE NORTH-SOUTH FALLING. THIS WAS ALL VERIFIED BY GPS OBSERVATION AND AN E.D.M. TRAVERSE OF SECTIONS 13, 14, & 23



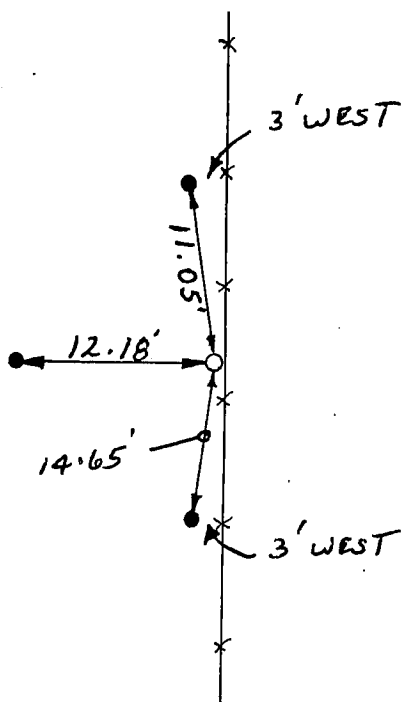
CERTIFIED CORRECT TO THE BEST OF MY KNOWLEDGE AND BELIEF

Thomas Buck
 Registered Land Surveyor

DATE: 9/24/98

TIE SKETCH

Show at least three (3) ties and monument



NO SCALE
 LEGENDS

○ = 3/4" X 24" IRON ROD

● = 1/2" IRON ROD

* — * = EXISTING FENCE