

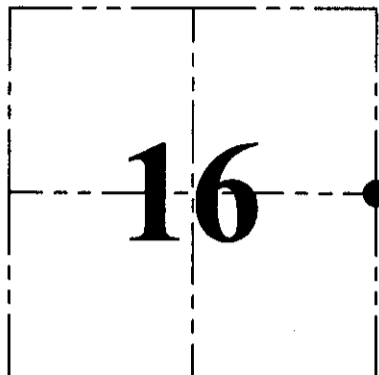
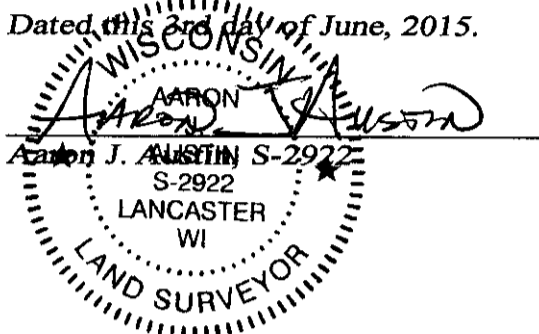
U.S. PUBLIC LAND SURVEY MONUMENT RECORD - GRANT COUNTY, WI

Section 16, Town 5 North Range 4 West, Town of Little Grant

CERTIFICATE:

I, Aaron J. Austin, Wisconsin Professional Land Surveyor, do hereby certify that the corner location on this record was determined by me and/or under my direct supervision and that this U.S. Public Land Survey Monument Record is correct and complete to the best of my knowledge and belief.

Dated this 3rd day of June, 2015.



● = CORNER LOCATION

HISTORY OF CORNER ESTABLISHMENT:

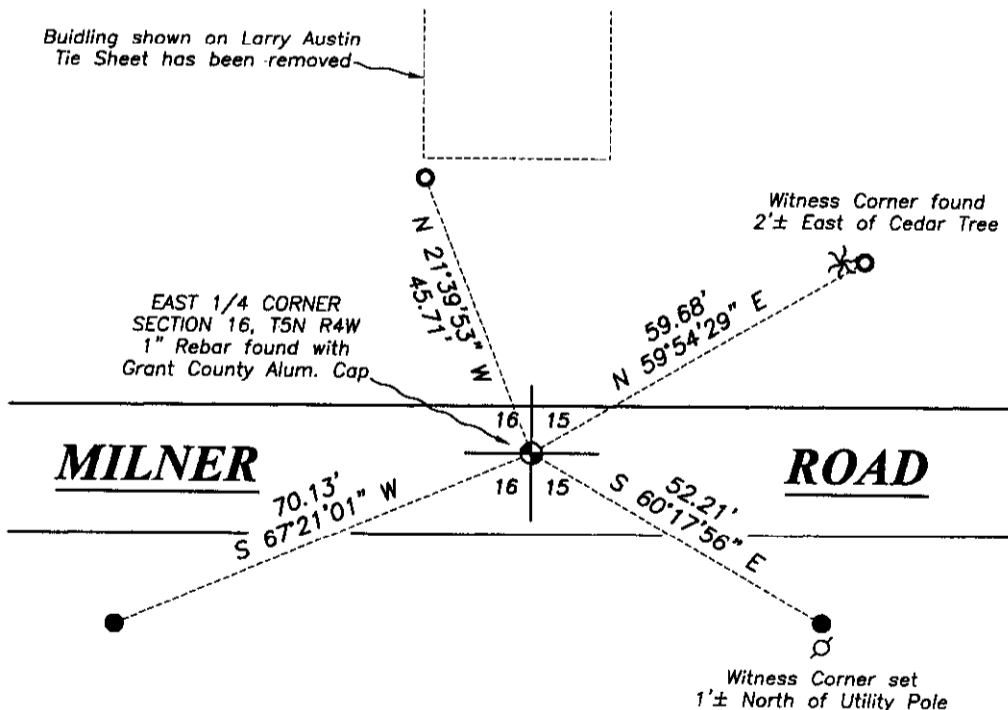
- 1833-Harvey Parke set original corner.
- 1882-J.C. Scott tied to the corner on a Survey in Book D, Page 114.
- 1998-Larry Austin reset the corner on a Survey filed in Book 4, Page 36.
- 1999-Larry Austin prepared a Grant County Certified Land Corner sheet.
- 2008-Larry Austin tied to the corner on a Survey filed in Book 22, Page 66.
- 2012-Jimmy Rose tied to the corner on a Survey filed in Book 32, Page 54.

DESCRIPTION OF CORNER EVIDENCE FOUND:

I found the Rebar with Grant County Aluminum Cap in place and 2 witness corners. The other 2 witness corners could not be recovered. I set 2 additional witness corners and verified this location with E.D.M. and G.P.S. methods.

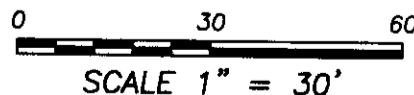
DESCRIPTION OF CORNER AND WITNESS MONUMENTS, references and accessories used to perpetuate the original or re-established location of this corner. Witnesses to corner location Shane Austin

SKETCH:



LEGEND

- ⊕ Section Corner—as designated
- 1/2" x 12" Rebar set with red plastic "TIE" cap
- 1/2" Rebar found



Austin Engineering LLC
austinengineeringllc.com

4211 HWY 81 E, LANCASTER, WI 53813
PHONE: 608-723-6363 FAX: 608-723-6702

JOB NO: 15s047
H:CRD\15s047
H:\TIE\T5NR4W\57

FIELDBOOK: TDSR
DRAWN BY: AJ AUSTIN
CREW: SW AUSTIN

GRANT COUNTY CERTIFIED LAND CORNER

CORNER NO. 57

CERTIFICATE:

I, LARRY L. AUSTIN, DO HEREBY CERTIFY THAT ON 7 DAY OF OCTOBER, 1998, I FOUND OCCUPATIONAL EVIDENCE OF THE EAST 1/4 CORNER OF SECTION 16, TOWN 05 NORTH, RANGE 04 WEST OF THE FOURTH PRINCIPAL MERIDIAN, AND I RE-ESTABLISHED SAID CORNER ACCORDING TO THE WISCONSIN STATUTES AS SHOWN AND DESCRIBED HEREON.

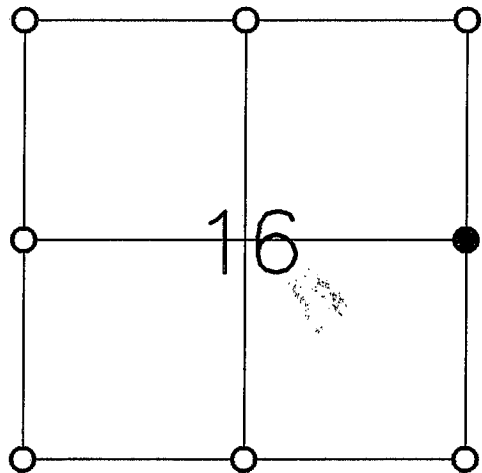
DATED THIS 4 DAY OF JANUARY, 1999

Larry L. Austin
LARRY L. AUSTIN S-1903



SEAL

T 5 N R 4 W
TOWN OF LITTLE GRANT



● = CORNER LOCATION

HISTORY OF ORIGINAL CORNER ESTABLISHMENT:
CORNER SET IN 1833 BY HARVEY PARKE.

DESCRIPTION OF CORNER EVIDENCE FOUND:
CORNER WAS SET IN THE CENTERLINE OF EAST-WEST MILNER ROAD AND THE FENCE TO THE SOUTH. VERIFIED THIS LOCATION USING E.D.M. & G.P.S. METHODS.

DESCRIPTION OF CORNER AND WITNESS MONUMENTS, REFERENCES AND ACCESSORIES USED TO PERPETUATE THE ORIGINAL OR RE-ESTABLISHED LOCATION OF THIS CORNER:

WITNESS TO THE CORNER LOCATION:
BOBBY SEDGWICK
SHELBY BLINDERT

SKETCH:

