

54057.5

# U.S. PUBLIC LAND SURVEY MONUMENT RECORD - GRANT COUNTY, WI

Section 15, Town 5 North Range 4 West, Town of Little Grant (a)

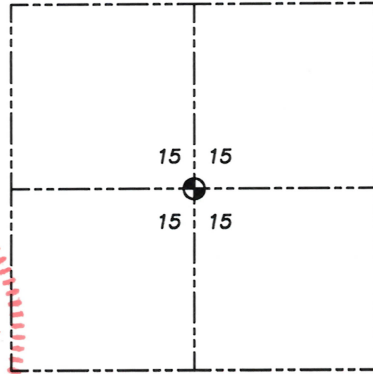
NOTE: This form is intended and designed to fulfill all requirements of the Wisconsin Administrative Code Chapter A-E 7.08, U.S. Public Land Survey Monument Record (3) (a) (b) (c) (d) (e) (f) (g) (h) (i).

**CERTIFICATE: (i)**

I, Aaron J. Austin, Wisconsin Professional Land Surveyor, do hereby certify that the corner location on this record was determined by me and/or under my direct supervision and that this U.S. Public Land Survey Monument Record is correct and complete to the best of my knowledge and belief.

Dated this 26th day of June, 2025.

*Aaron J. Austin*  
Aaron J. Austin, PLS-2922



⊕ = CORNER LOCATION

Grant County Coordinates:  
NAD 83 (2011)  
Northing: 545,969.86  
Easting: 786,063.71

**HISTORY OF CORNER ESTABLISHMENT:**

Corner was not set with the Original Government Survey.  
Larry Austin set a 3/4" Rebar on a Plat of Survey filed in Book 22, Page 66 dated 3-7-2008.

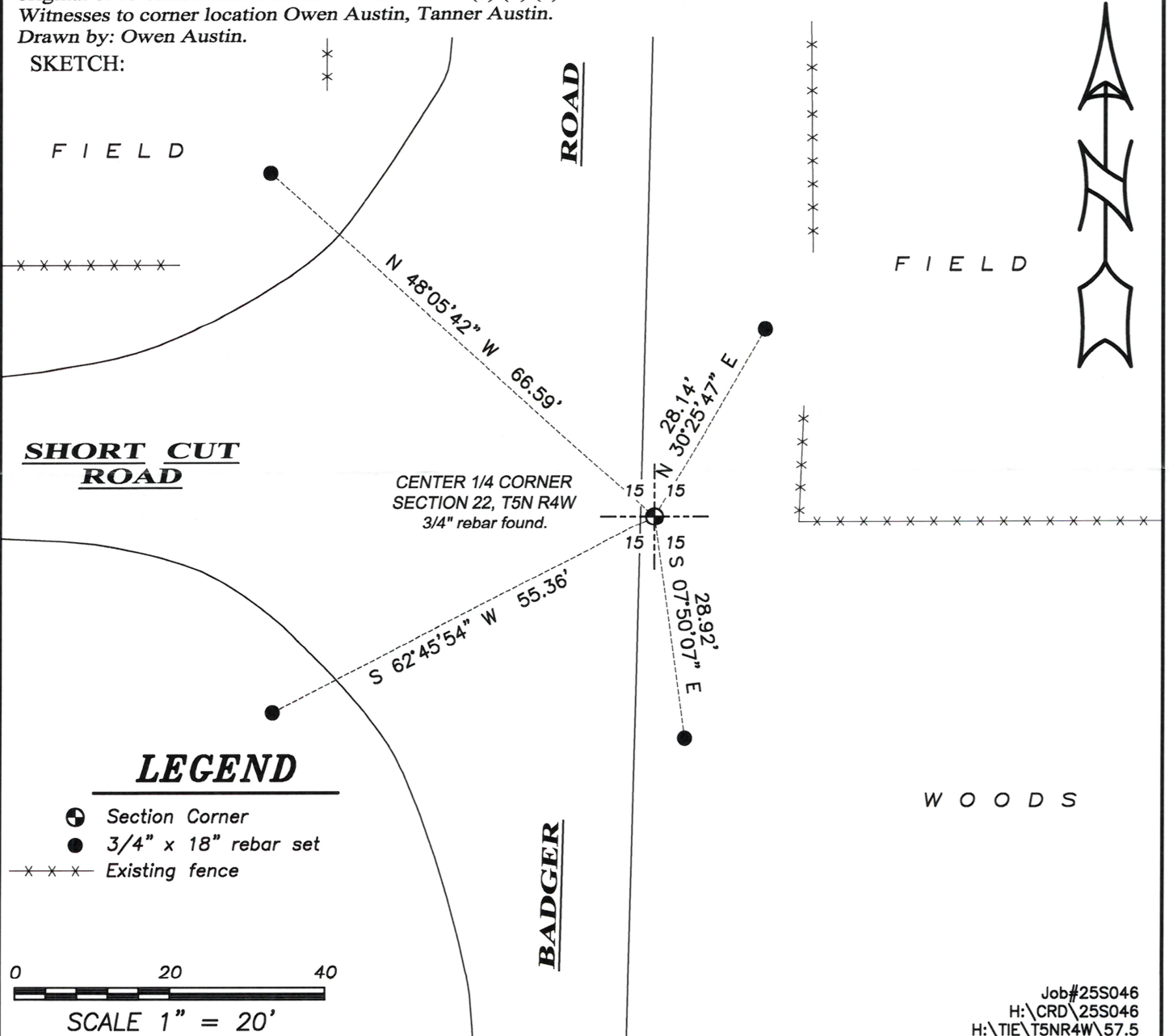
**DESCRIPTION OF CORNER EVIDENCE FOUND: (b) (f) (g) (h)**

I found the 3/4" Rebar Larry set and put a plastic cap on it. I set four witness corners after I verified the Monument's location with G.P.S. and E.D.M. methods.

**DESCRIPTION OF CORNER AND WITNESS MONUMENTS, references and accessories used to perpetuate the original or re-established location of this corner. (c) (d) (e)**

Witnesses to corner location Owen Austin, Tanner Austin.  
Drawn by: Owen Austin.

SKETCH:



**LEGEND**

- ⊕ Section Corner
- 3/4" x 18" rebar set
- x-x-x- Existing fence

0 20 40  
SCALE 1" = 20'

Job#25S046  
H:\CRD\25S046  
H:\TIE\T5NR4W\57.5