

54056

U.S. PUBLIC LAND SURVEY MONUMENT RECORD - GRANT COUNTY, WI

Section 17, Town 5 North Range 4 West, Town of Little Grant (a)

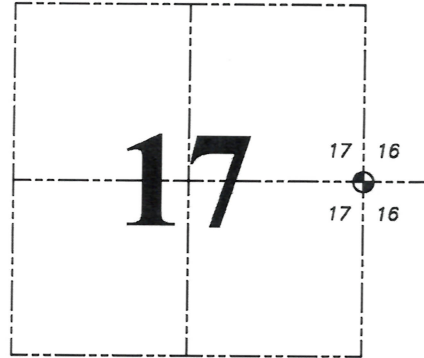
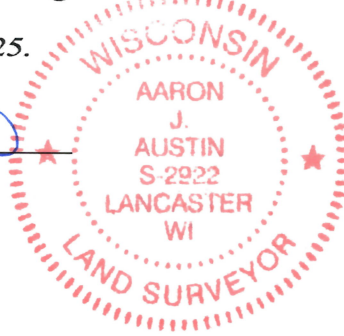
NOTE: This form is intended and designed to fulfill all requirements of the Wisconsin Administrative Code Chapter A-E 7.08, U.S. Public Land Survey Monument Record (3) (a) (b) (c) (d) (e) (f) (g) (h) (i).

CERTIFICATE: (i)

I, Aaron J. Austin, Wisconsin Professional Land Surveyor, do hereby certify that the corner location on this record was determined by me and/or under my direct supervision and that this U.S. Public Land Survey Monument Record is correct and complete to the best of my knowledge and belief.

Dated this 27th day of May, 2025.

Aaron J. Austin
Aaron J. Austin, PLS-2922



⊙ = CORNER LOCATION

Grant County Coordinates:
NAD 83 (2011)
Northing: 545,972.49
Easting: 778,083.35

HISTORY OF CORNER ESTABLISHMENT:

Original corner was set in 1833 by Harvey Parke.
Larry Austin set a Grant County Aluminum Monument and prepared a Survey Monument Record dated 1-16-1995.

DESCRIPTION OF CORNER EVIDENCE FOUND: (b) (f) (g) (h)

I found the Aluminum Monument and two witness corners Larry set. I set two witness corners after I verified the Monument's location with G.P.S. and E.D.M. methods.

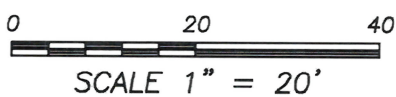
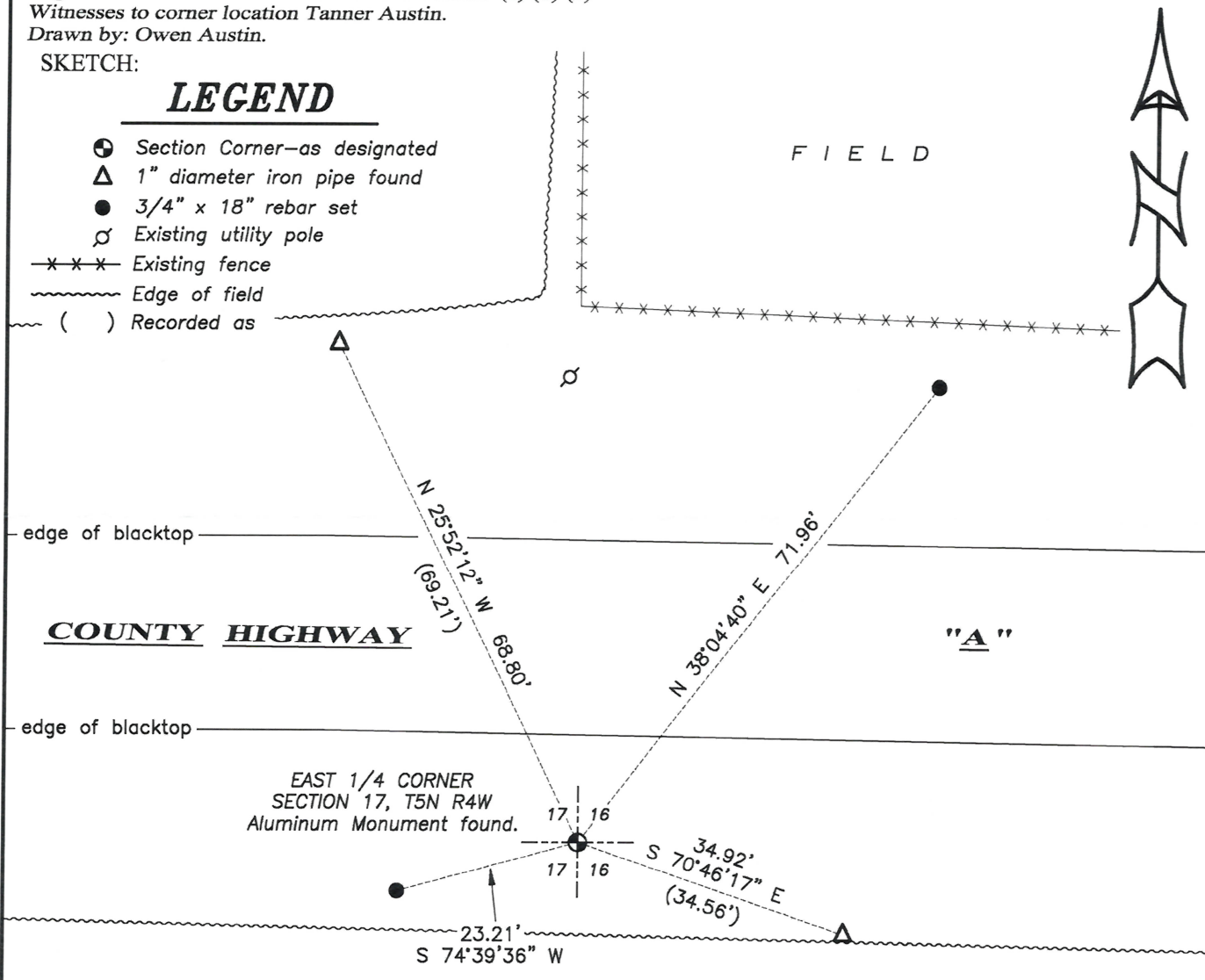
DESCRIPTION OF CORNER AND WITNESS MONUMENTS, references and accessories used to perpetuate the original or re-established location of this corner. (c) (d) (e)

Witnesses to corner location Tanner Austin.
Drawn by: Owen Austin.

SKETCH:

LEGEND

- ⊙ Section Corner—as designated
- △ 1" diameter iron pipe found
- 3/4" x 18" rebar set
- ⊘ Existing utility pole
- x-x-x- Existing fence
- ~~~~~ Edge of field
- () Recorded as



Job#25S090
H:\CRD\25S090
H:\TIE\T5NR4W\56

GRANT COUNTY

Survey Monument Record

TYPE OF MONUMENT GRANT Co. Alum. Mon.

STATE PLANE COORDINATES: N _____
E _____

ELEVATION — M.S.L. DATUM: _____

THETA ANGLE: _____

FIELD BOOK: 94-19

PAGE: 35

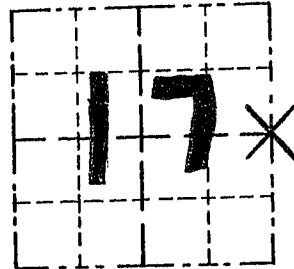
CORNER NO. 56

SECTION 17

TOWN 5 N

RANGE 4 W

E 1/4 Cor



LOCATION
(Indicated by "X")



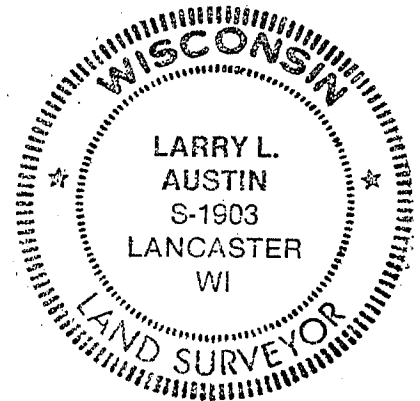
BASIS FOR MONUMENT LOCATION

(Use reverse side if necessary)

Show info such as: History of corner, with reference to Vol. and pg., dates, surveyor; exact description of monument replaced; if location computed, by taped or EDM traverse; landowner, remarks, etc.

SEAL:

NO RECORD OF CORNER FOUND SINCE ORIGINAL SURVEYS IN 1833; I SET THE CORNER AT MIDWAY BETWEEN THE NE & SE CORNER. VERIFIED BY EDM TRAVERSE OF THE AREA.



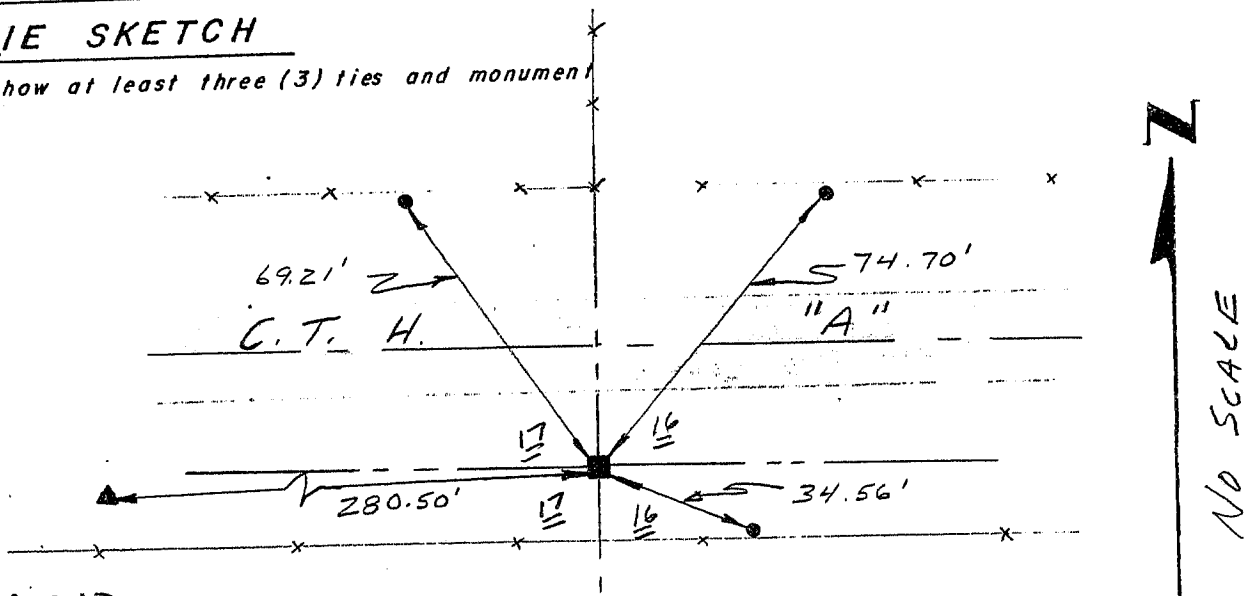
CERTIFIED CORRECT

Gary R. Rust
Registered Land Surveyor

DATE: 1-16-95

TIE SKETCH

Show at least three (3) ties and monumen



LEGEND

- GRANT CO. ALUM. MON. SET
- 1" IRON PIPE SET
- ▲ FD. 1/2" PIPE SET IN CONCRETE (w/ D.O.T. MARKER.)