

# U.S. PUBLIC LAND SURVEY MONUMENT RECORD

Section 7, Town 5 North Range 4 West, Town of Little Grant, Grant County, Wisconsin

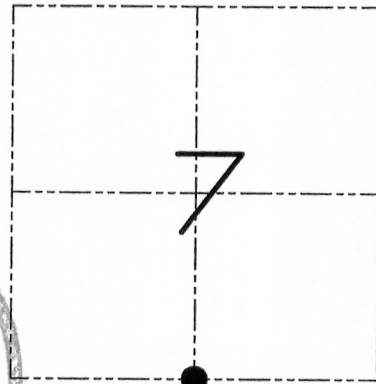
## CERTIFICATE

I, Larry L. Austin, do hereby certify that the corner location on this record was determined by me and/or under my direct supervision and that this U.S. public land survey monument record is correct and complete to the best of my knowledge and belief.

*Larry L. Austin*  
 Larry L. Austin, S-1903



8/15/09  
 date



● = CORNER LOCATION

## HISTORY OF CORNER

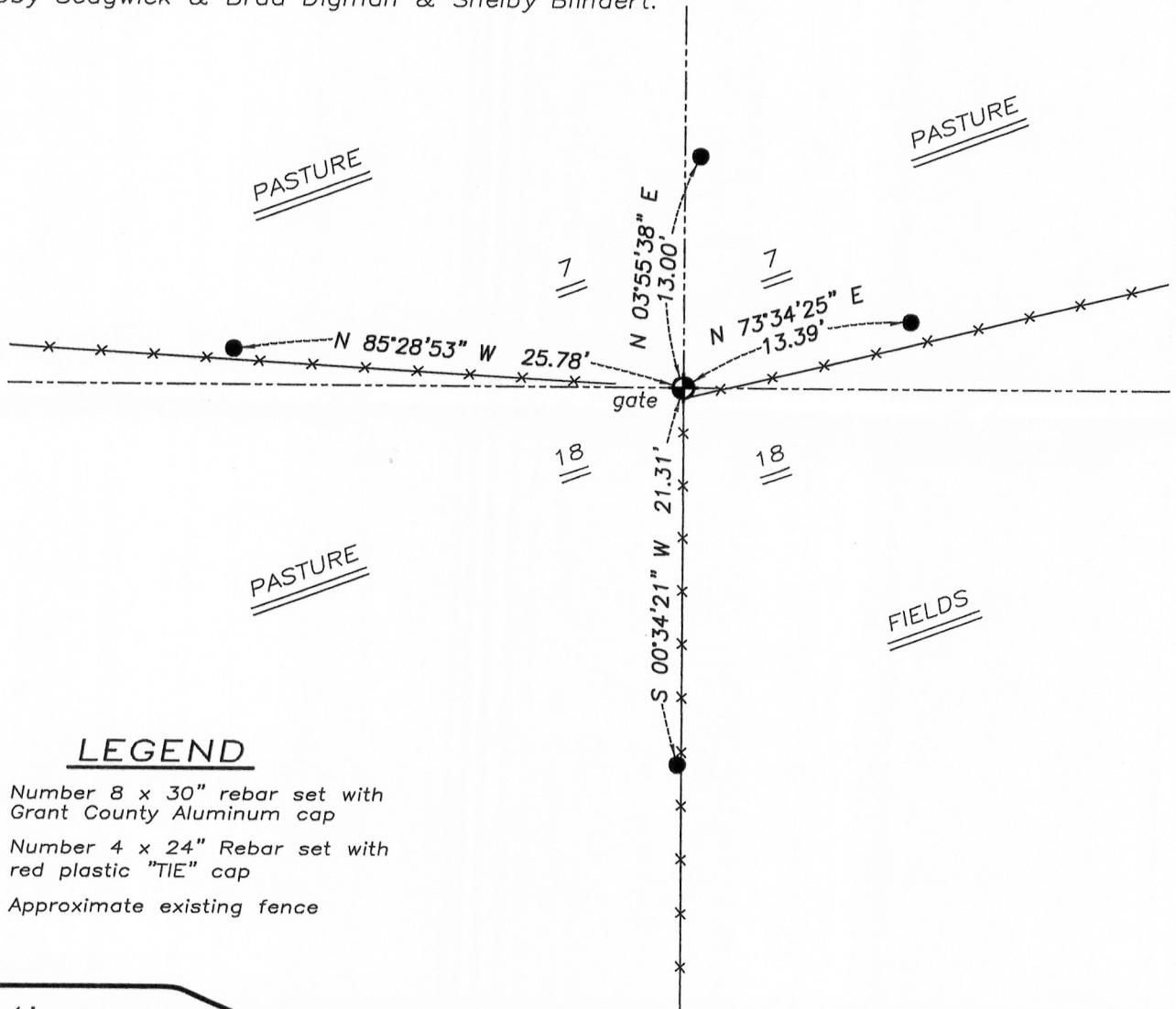
Corner was originally set in 1833 by Harvey Parke. In 1854 John Clarke found the original post and witness corners. No other record of the corner was found.

## CORNER EVIDENCE FOUND

I found and accepted and existing fence line. I verified its location after G.P.S. and E.D.M. traverse of the area.

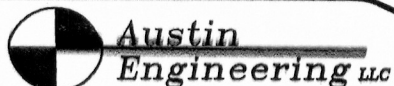
DESCRIPTION OF CORNER AND WITNESS MONUMENTS, references and accessories used to perpetuate the original or re-established location of this corner. Witnesses to monument location Bobby Sedgwick & Brad Digman & Shelby Blindert.

## SKETCH:



## LEGEND

- Number 8 x 30" rebar set with Grant County Aluminum cap
- Number 4 x 24" Rebar set with red plastic "TIE" cap
- x- Approximate existing fence



4211 HWY 81 E, LANCASTER, WI 53813  
 PHONE 608-723-6363 FAX 608-723-6702

JOB NUMBER 000110-000000  
 FIELDBOOK: TDSR, 2811  
 G:\T5NR4W\28  
 H:\TIE\T5NR4W\52

DRAWN BY: SW AUSTIN  
 APPROVED: LL AUSTIN

NOT TO SCALE