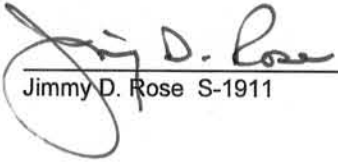


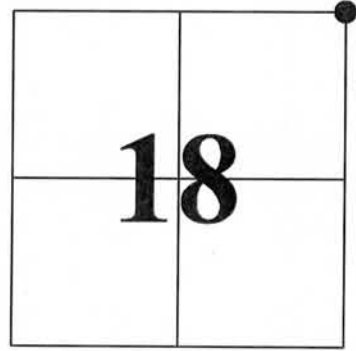
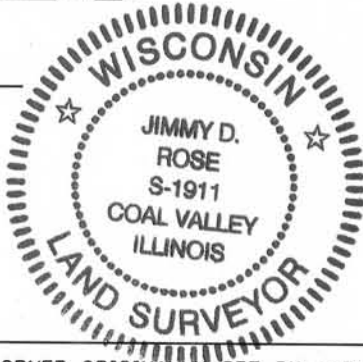
U.S. PUBLIC LAND SURVEY MONUMENT RECORD - GRANT COUNTY, WI
 Section 18, Town 5 North Range 4 West, Town of Little Grant

CERTIFICATE:

I, Jimmy D. Rose, do hereby certify that the corner location on this record was determined by me and/or under my direct supervision and that this U.S. Public Land Survey Monument Record is correct and complete to the best of my knowledge and belief.

Dated this 12th day of November, 2012


 Jimmy D. Rose S-1911



● = CORNER LOCATION



HISTORY OF CORNER ESTABLISHMENT: CORNER ORIGINALLY SET BY HARVEY PARKE IN 1833. CORNER LOCATION RE-ESTABLISHED BY LARRY AUSTIN IN APRIL 2005.

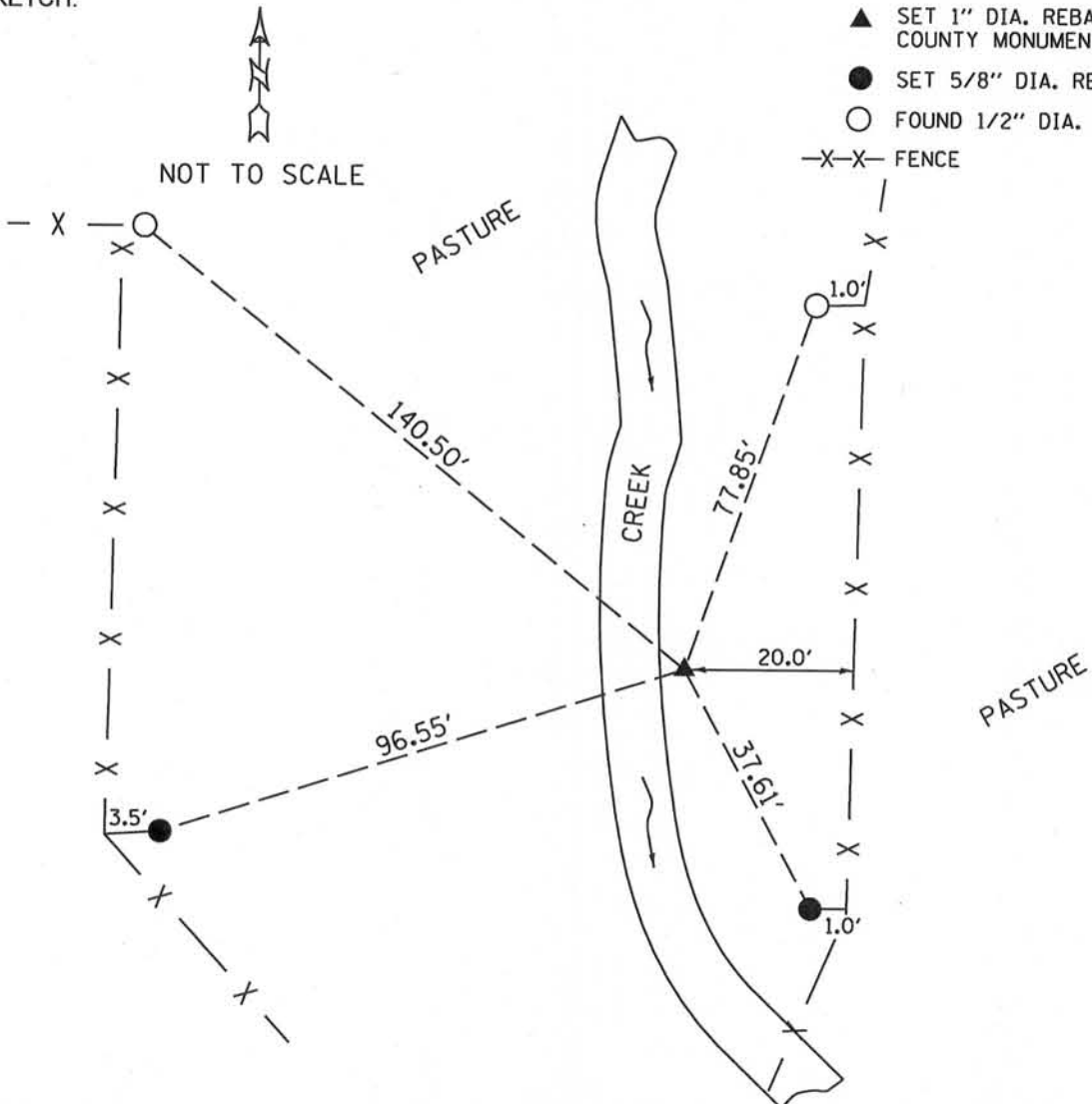
DESCRIPTION OF CORNER EVIDENCE FOUND: CORNER AND TWO ACCESSORIES HAVE BEEN OBLITERATED. USED TWO REMAINING ACCESSORIES AND TRAVERSE AROUND SECTION TO VERIFY LOCATION ESTABLISHED.

DESCRIPTION OF CORNER AND WITNESS MONUMENTS, references and accessories used to perpetuate the original or re-established location of this corner.

SKETCH:

LEGEND

- ▲ SET 1" DIA. REBAR W/ GRANT COUNTY MONUMENT CAP
- SET 5/8" DIA. REBAR
- FOUND 1/2" DIA. REBAR
- X-X- FENCE

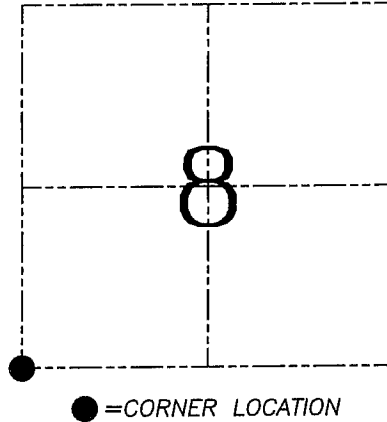
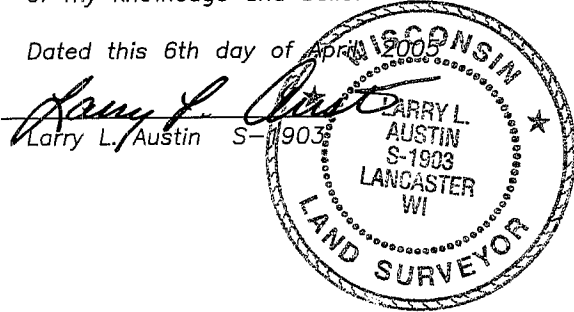


U.S. PUBLIC LAND SURVEY MONUMENT RECORD – GRANT COUNTY, WI
Section 8, Town 5 North Range 4 West, Town of Little Grant

CERTIFICATE

I, Larry L. Austin, do hereby certify that the corner location on this record was determined by me and/or under my direct supervision and that this U.S. public land survey monument record is correct and complete to the best of my knowledge and belief.

Dated this 6th day of April 2005



HISTORY OF CORNER ESTABLISHMENT

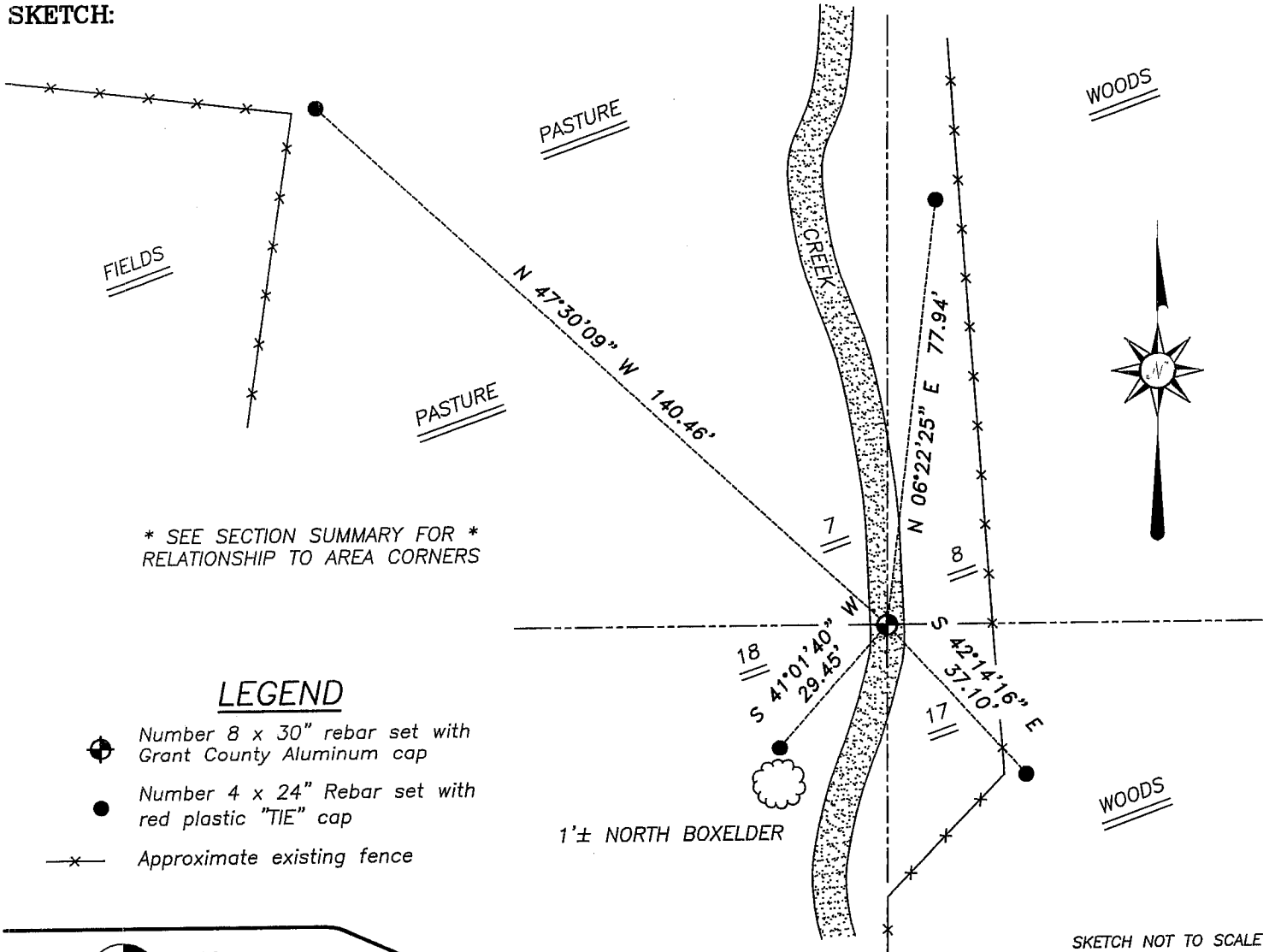
Corner was originally set in 1833 by Harvey Parke.
 No other record of the corner was found.

DESCRIPTION OF CORNER EVIDENCE FOUND

I reset the corner proportionately between the West 1/4 of Section 8 and the West 1/4 of Section 17. This location fit the occupied 40 to the North and occupational evidence to the South. Verified this location using EDM & GPS methods.



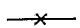
DESCRIPTION OF CORNER AND WITNESS MONUMENTS, references and accessories used to perpetuate the original or re-established location of this corner. Witnesses to corner location Bobby Sedgwick & Shelby Blindert & Brad Digman

SKETCH:



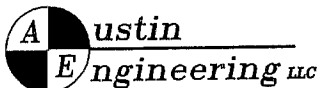
* SEE SECTION SUMMARY FOR *
 RELATIONSHIP TO AREA CORNERS

LEGEND

-  Number 8 x 30" rebar set with Grant County Aluminum cap
-  Number 4 x 24" Rebar set with red plastic "TIE" cap
-  Approximate existing fence

1'± NORTH BOXELDER

SKETCH NOT TO SCALE



4211 HWY 81 E, LANCASTER, WI 53813
 PHONE 608-723-6363 FAX 608-723-6702

JOB NUMBER 04S324
 FIELDBOOK: TDSR, 2307
 G:\T5NR4W\28
 H:\TIE\T5NR4W\51

DRAWN BY: SW AUSTIN
 APPROVED: LL AUSTIN