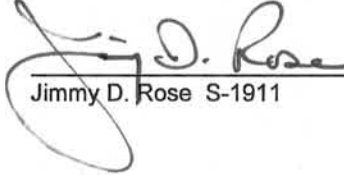


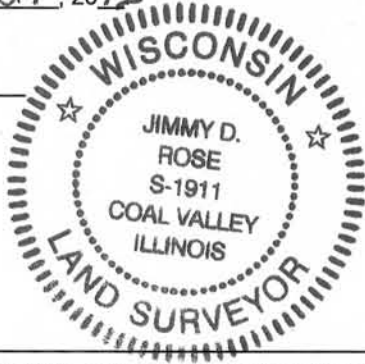
U.S. PUBLIC LAND SURVEY MONUMENT RECORD - GRANT COUNTY, WI
 Section 17, Town 5 North Range 4 West, Town of Little Grant

CERTIFICATE:

I, Jimmy D. Rose, do hereby certify that the corner location on this record was determined by me and/or under my direct supervision and that this U.S. Public Land Survey Monument Record is correct and complete to the best of my knowledge and belief.

Dated this 12th day of November, 2012


 Jimmy D. Rose S-1911



● = CORNER LOCATION

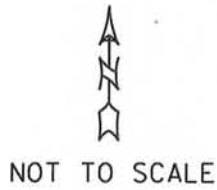
HISTORY OF CORNER ESTABLISHMENT: CORNER LOCATION ESTABLISHED BY LARRY AUSTIN IN JANUARY 1994.

DESCRIPTION OF CORNER EVIDENCE FOUND: UNABLE TO FIND CORNER MONUMENT. FOUND ACCESSORY TIES TO RE-ESTABLISH CORNER LOCATION. VERIFIED CORNER LOCATION BY TRAVERSE IN SECTION 17 AND TIES TO PRIOR SURVEY.

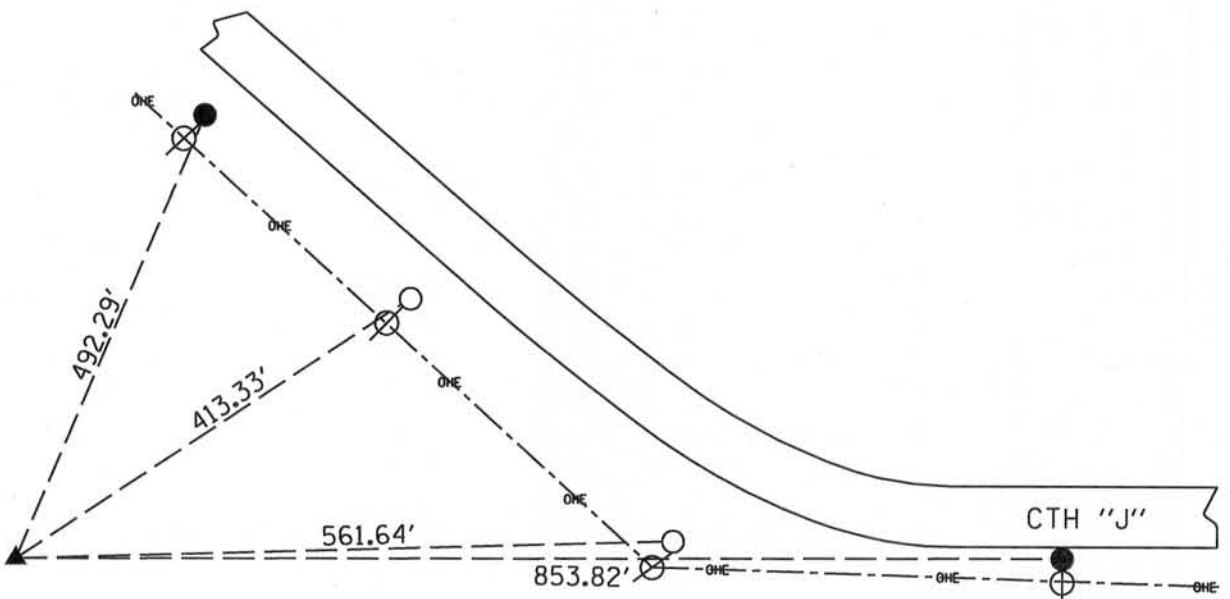
DESCRIPTION OF CORNER AND WITNESS MONUMENTS, references and accessories used to perpetuate the original or re-established location of this corner.

SKETCH:

LEGEND



- ▲ SET GRANT COUNTY CAP ON FOUND 7/8" DIA. REBAR
- SET 5/8" DIA. REBAR
- 3/8 x 12" SPIKE
- ⊗ POWER POLE



GRANT COUNTY

Survey Monument Record

TYPE OF MONUMENT GRANT CO. ALUM MON
 STATE PLANE COORDINATES: N _____
 E _____
 ELEVATION — M.S.L. DATUM: _____
 THETA ANGLE: _____
 FIELD BOOK: 94-00
 PAGE _____

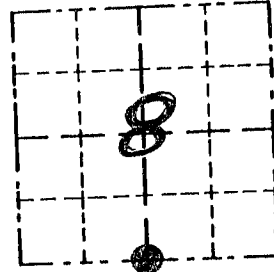
CORNER NO. _____
 SECTION 8
 TOWN 5 N
 RANGE 4 W

BASIS FOR MONUMENT LOCATION

(Use reverse side if necessary)

Show info such as: History of corner, with reference to Vol. and pg., dates, surveyor; exact description of monument replaced; if location computed, by taped or EDM traverse; landowner, remarks, etc.

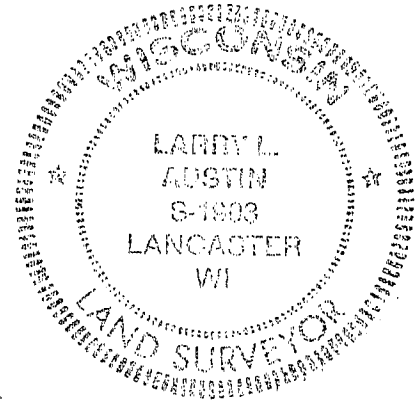
NO RECORD FOUND OF CORNER SINCE ORIG SURVEYS; CORNER LOCATION ESTABLISHED BASED ON OCCUPATIONAL EVIDENCE & VERIFIED BY EDM TRAVERSE



LOCATION
(Indicated by "X")



SEAL:



CERTIFIED CORRECT

Larry L. Austin
 Registered Land Surveyor

DATE: 1/31/94

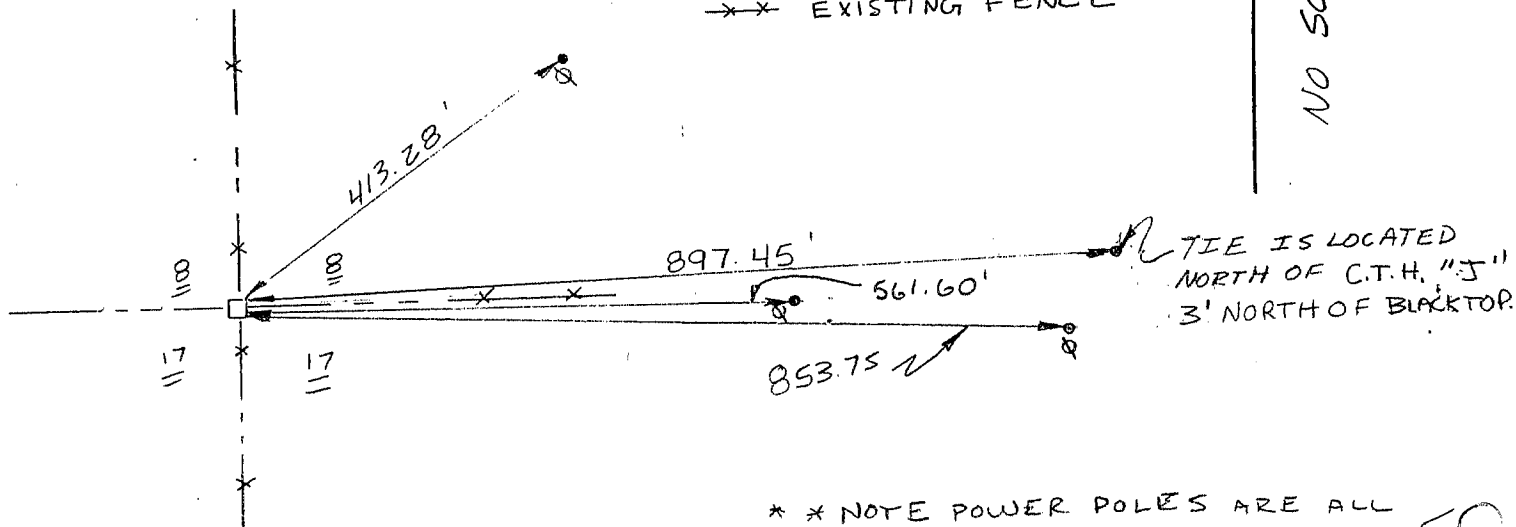
TIE SKETCH

Show at least three (3) ties and monument

** TIES ARE SET IN FRONT OF POWER POLES FROM ROAD OUT **

LEGEND

- 3/8x12" SPIKE SET
- GRANT CO. ALUM. MON SET
- ⊕ POWER POLE
- - - EXISTING FENCE



** NOTE POWER POLES ARE ALL ALONG C.T.H. "J" **