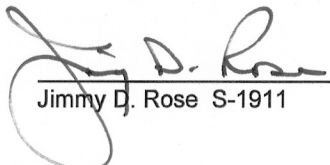


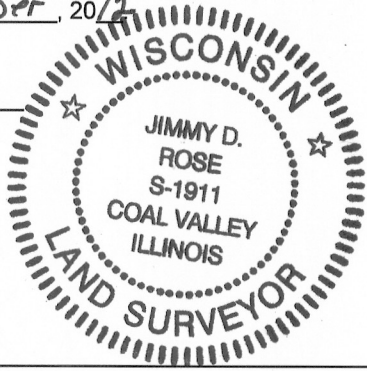
U.S. PUBLIC LAND SURVEY MONUMENT RECORD - GRANT COUNTY, WI
 Section 16, Town 5 North Range 4 West, Town of Little Grant

CERTIFICATE:

I, Jimmy D. Rose, do hereby certify that the corner location on this record was determined by me and/or under my direct supervision and that this U.S. Public Land Survey Monument Record is correct and complete to the best of my knowledge and belief.

Dated this 12th day of November, 2012


 Jimmy D. Rose S-1911



● = CORNER LOCATION

HISTORY OF CORNER ESTABLISHMENT: NO PRIOR RECORD OF CORNER SINCE ORIGINAL GOVERNMENT SURVEYS WAS UNCOVERED.

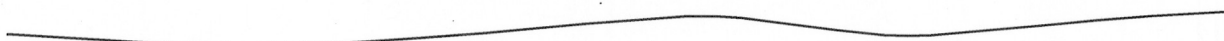
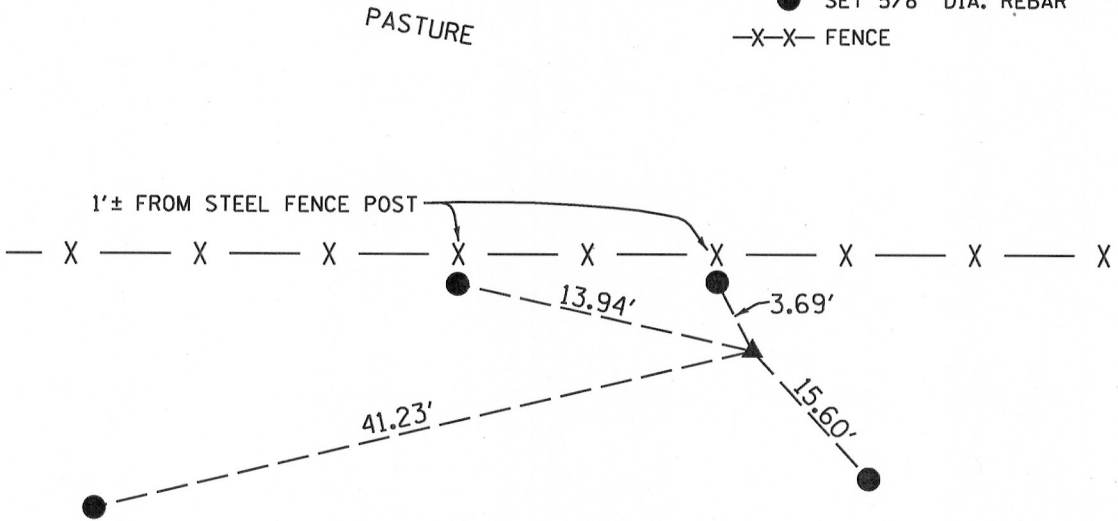
DESCRIPTION OF CORNER EVIDENCE FOUND: THIS CORNER WAS ESTABLISHED PROPORTIONATELY BETWEEN THE NW & NE CORNERS OF SECTION 16. THE LOCATION APPEARS TO FIT WELL WITH OCCUPATION LINES WITHIN THE SECTION.

DESCRIPTION OF CORNER AND WITNESS MONUMENTS, references and accessories used to perpetuate the original or re-established location of this corner.

SKETCH:

LEGEND

- ▲ SET 1" DIA. REBAR W/ GRANT COUNTY MONUMENT CAP
- SET 5/8" DIA. REBAR
- X-X- FENCE



PASTURE

CULTIVATED FIELD



NOT TO SCALE