

54027

# U.S. PUBLIC LAND SURVEY MONUMENT RECORD - GRANT COUNTY, WI

Section 3, Town 5 North Range 4 West, Town of Little Grant (a)

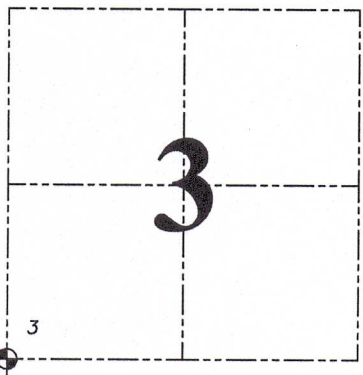
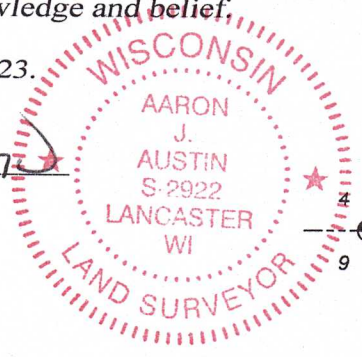
NOTE: This form is intended and designed to fulfill all requirements of the Wisconsin Administrative Code Chapter A-E 7.08, U.S. Public Land Survey Monument Record (3) (a) (b) (c) (d) (e) (f) (g) (h) (i).

**CERTIFICATE: (i)**

I, Aaron J. Austin, Wisconsin Professional Land Surveyor, do hereby certify that the corner location on this record was determined by me and/or under my direct supervision and that this U.S. Public Land Survey Monument Record is correct and complete to the best of my knowledge and belief.

Dated this 20th day of April, 2023.

*Aaron J. Austin*  
Aaron J. Austin, S-2922



☉ = CORNER LOCATION

Grant County Coordinates:  
NAD 83 (2011)  
Northing: 553,980.94  
Easting: 783,328.15

**HISTORY OF CORNER ESTABLISHMENT:**

Original corner was set in 1833 by Harvey Parke.  
Thomas Buck set a 3/4" Rebar and prepared a Survey Monument Record dated 10-15-1998.

**DESCRIPTION OF CORNER EVIDENCE FOUND: (b) (f) (g) (h)**

I found the 3/4" Rebar and one witness corner Buck set. I established three additional witness after I verified the Monument's location with G.P.S. and E.D.M. methods.

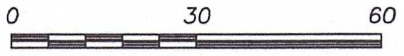
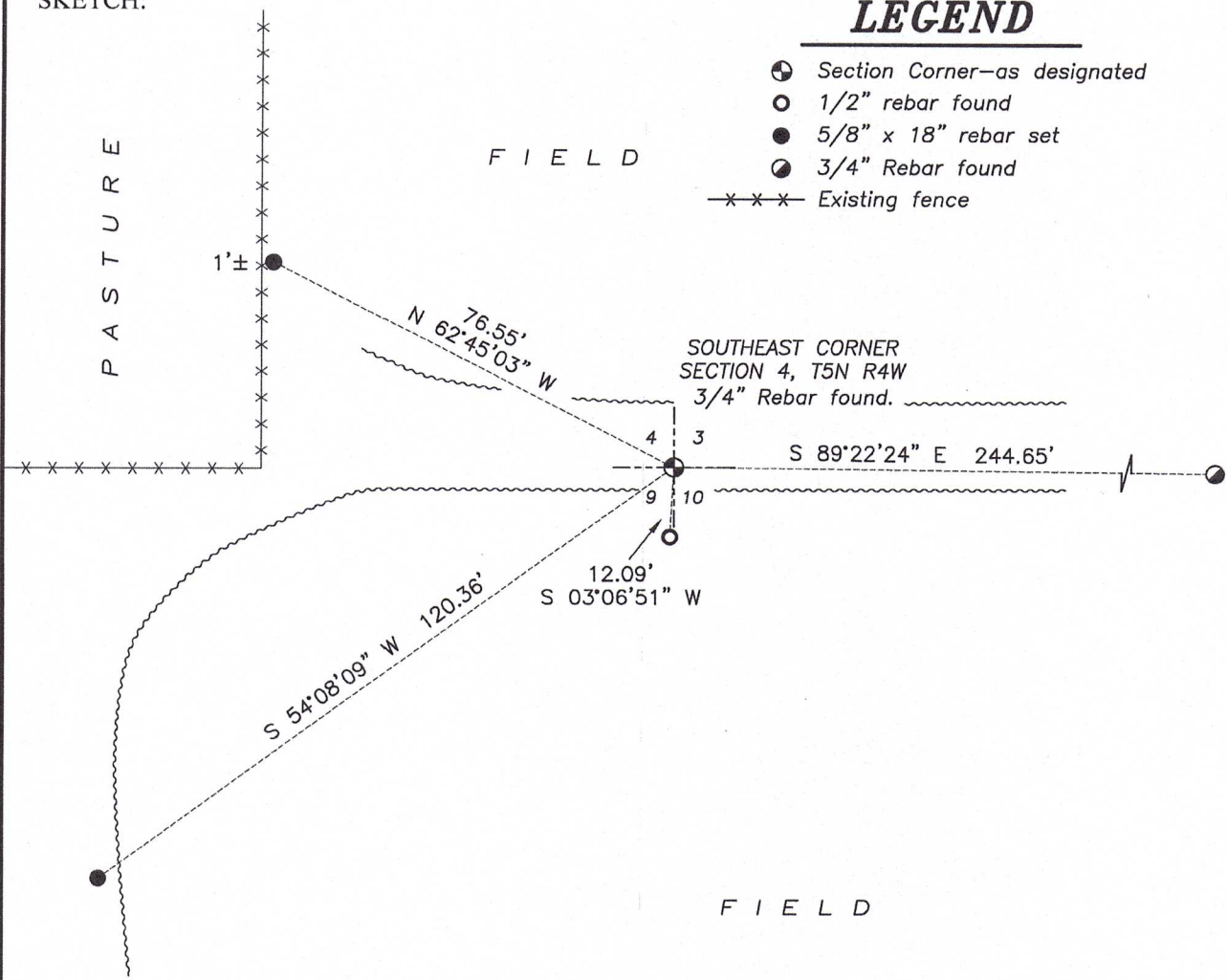
**DESCRIPTION OF CORNER AND WITNESS MONUMENTS, references and accessories used to perpetuate the original or re-established location of this corner. (c) (d) (e)**

Witnesses to corner location Shane Austin, Owen Austin, Tanner Austin.  
Drawn by: Owen Austin

SKETCH:

## LEGEND

- ☉ Section Corner—as designated
- 1/2" rebar found
- 5/8" x 18" rebar set
- ⊙ 3/4" Rebar found
- x-x-x- Existing fence



SCALE 1" = 30'

U.S. PUBLIC LAND SURVEY MONUMENT RECORD - GRANT COUNTY, WI

Section 4, Town 5 North Range 4 West, Town of Little Grant (a)

NOTE: This form is intended and designed to fulfill all requirements of the Wisconsin Administrative Code Chapter A-E 7.08, U.S. Public Land Survey Monument Record (3) (a) (b) (c) (d) (e) (f) (g) (h) (i).

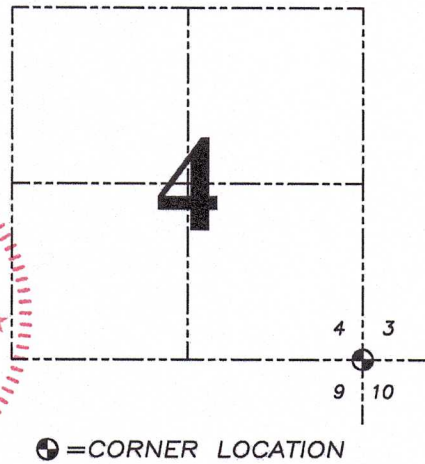
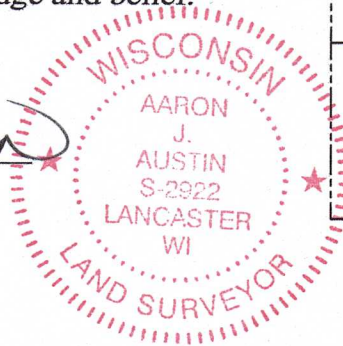
CERTIFICATE: (i)

I, Aaron J. Austin, Wisconsin Professional Land Surveyor, do hereby certify that the corner location on this record was determined by me and/or under my direct supervision and that this U.S. Public Land Survey Monument Record is correct and complete to the best of my knowledge and belief.

Dated this 20th day of April, 2023.

*Aaron J. Austin*

Aaron J. Austin, S-2922



Grant County Coordinates:  
NAD 83 (2011)  
Northing: 553,980.94  
Easting: 783,328.15

HISTORY OF CORNER ESTABLISHMENT:

Original corner was set in 1833 by Harvey Parke.  
Thomas Buck set a 3/4" Rebar and prepared a Survey Monument Record dated 10-15-1998.

DESCRIPTION OF CORNER EVIDENCE FOUND: (b) (f) (g) (h)

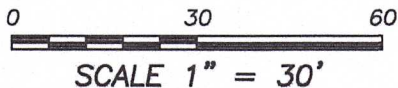
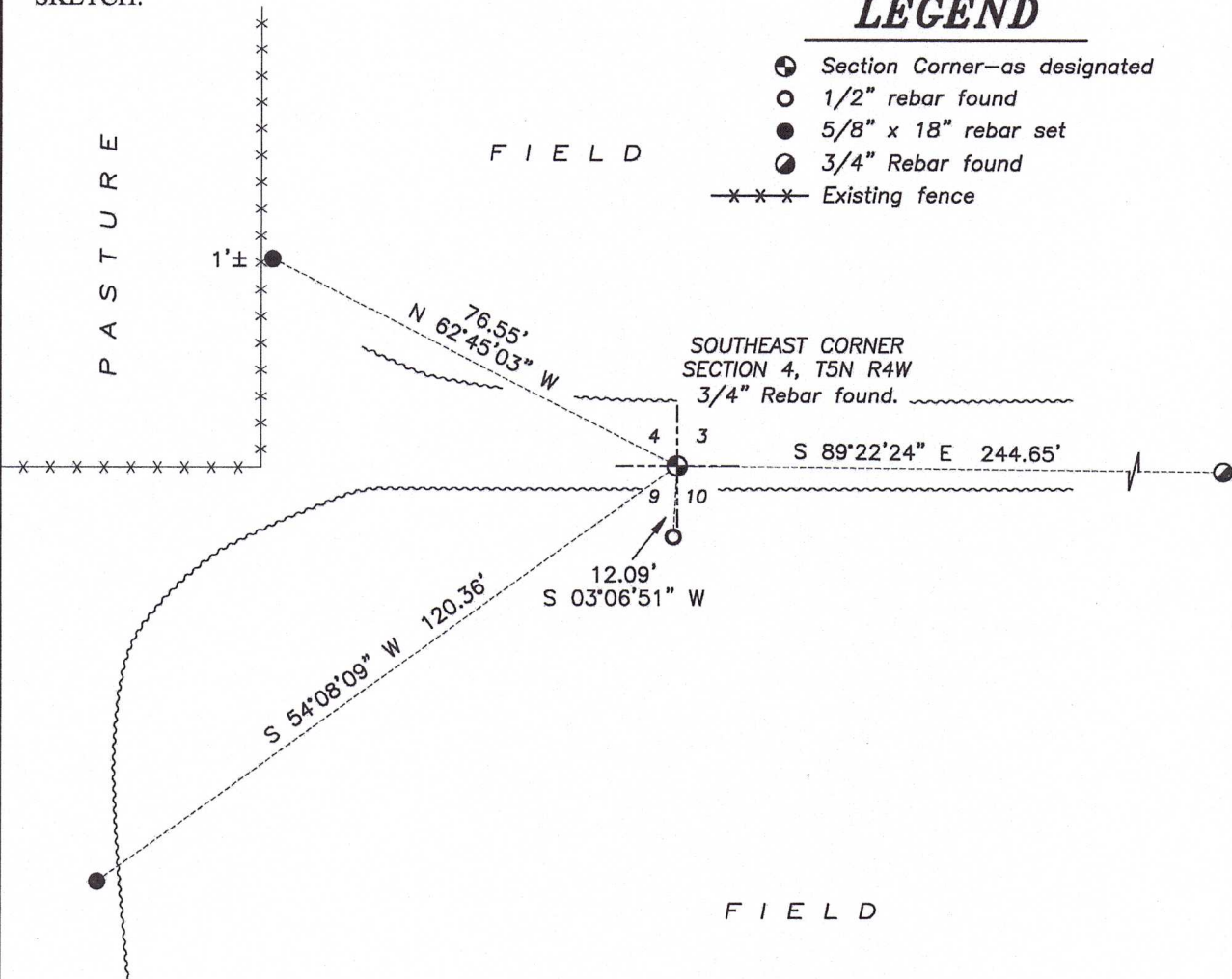
I found the 3/4" Rebar and one witness corner Buck set. I established three additional witness after I verified the Monument's location with G.P.S. and E.D.M. methods.

DESCRIPTION OF CORNER AND WITNESS MONUMENTS, references and accessories used to perpetuate the original or re-established location of this corner. (c) (d) (e)

Witnesses to corner location Shane Austin, Owen Austin, Tanner Austin.

Drawn by: Owen Austin

SKETCH:



# Survey Monument Record

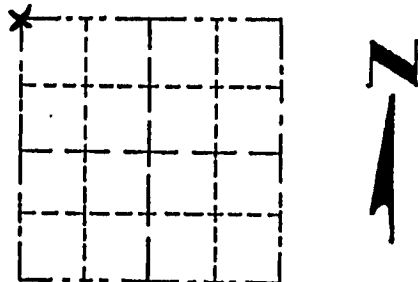
TYPE OF MONUMENT 3/4" x 24" Iron Rod  
 STATE PLANE COORDINATES: N \_\_\_\_\_  
 E \_\_\_\_\_  
 ELEVATION — M.S.L. DATUM: \_\_\_\_\_  
 THETA ANGLE: \_\_\_\_\_  
 FIELD BOOK: \_\_\_\_\_  
 PAGE \_\_\_\_\_

CORNER NO. \_\_\_\_\_  
 SECTION 10  
 TOWN 5 NORTH  
 RANGE 4 WEST

## BASIS FOR MONUMENT LOCATION

(Use reverse side if necessary)

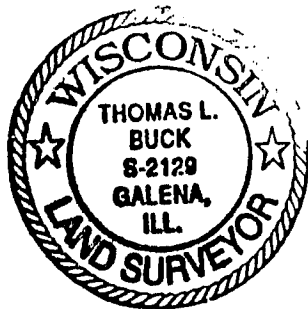
Show info such as: History of corner, with reference to Vol. and pg., dates, surveyor; exact description of monument replaced; if location computed, by taped or EDM traverse; landowner, remarks, etc.



LOCATION  
 (Indicated by "X")

- FOUND PREPARED LOCATION
- OBTAINED EVIDENCE LOCATION
- LOST CORNER (RESTORED BY PROPORTIONATE METHODS)

I FOUND NO HISTORY OF THIS CORNER SINCE THE ORIGINAL GOVERNMENT SURVEY. I SET THIS CORNER FROM THE EXISTING PHYSICAL EVIDENCE AFTER VERIFICATION BY PROPORTIONATE MEASUREMENTS FROM AN E. D. M. TRAVERSE OF SECTIONS 4, 9 + 10.



CERTIFIED CORRECT TO THE BEST OF MY KNOWLEDGE AND BELIEF

Thomas L. Buck  
 Registered Land Surveyor

DATE: 10/15/98

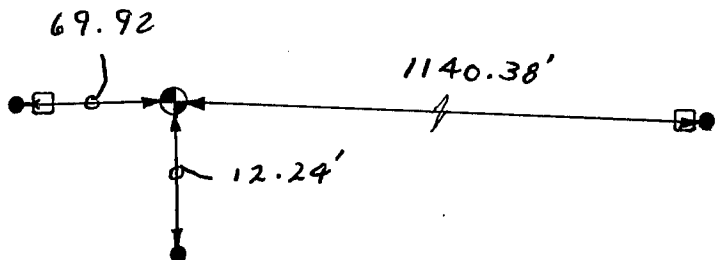
## TIE SKETCH

Show at least three (3) ties and monument

NOTE: THE OWNER OF THE PROPERTY SAID THAT THE FENCE WAS BLOWN AWAY BY A TORNADO. ALL THAT WAS REMAINING WAS THE 2 METAL FENCE POSTS.



NO SCALE



LEGEND

- ⊙ = 3/4" x 24" IRON ROD
- = 1/2" IRON ROD
- = METAL POST