

U.S. PUBLIC LAND SURVEY MONUMENT RECORD - GRANT COUNTY, WI

Section 1, Town 5 North Range 4 West, Town of Liberty(a)

NOTE: This form is intended and designed to fulfill all requirements of the Wisconsin Administrative Code Chapter A-E 7.08, U.S. Public Land Survey Monument Record (3) (a) (b) (c) (d) (e) (f) (g) (h) (i).

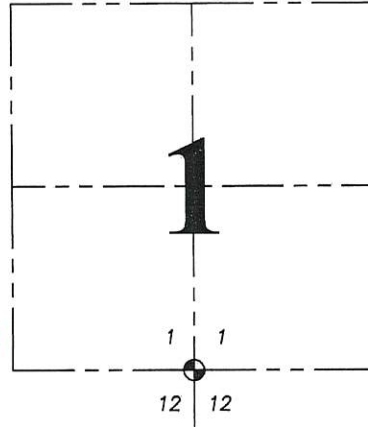
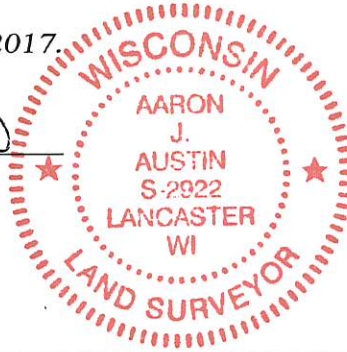
Corner No. 022

CERTIFICATE: (i)

I, Aaron J. Austin, Wisconsin Professional Land Surveyor, do hereby certify that the corner location on this record was determined by me and/or under my direct supervision and that this U.S. Public Land Survey Monument Record is correct and complete to the best of my knowledge and belief.

Dated this 24th day of January, 2017.

Aaron J. Austin
 Aaron J. Austin, S-2922



⊙ = CORNER LOCATION

Grant County Coordinates:
 NAD 83 (2011)
 Northing: 553,839.04
 Easting: 796,543.92

HISTORY OF CORNER ESTABLISHMENT:

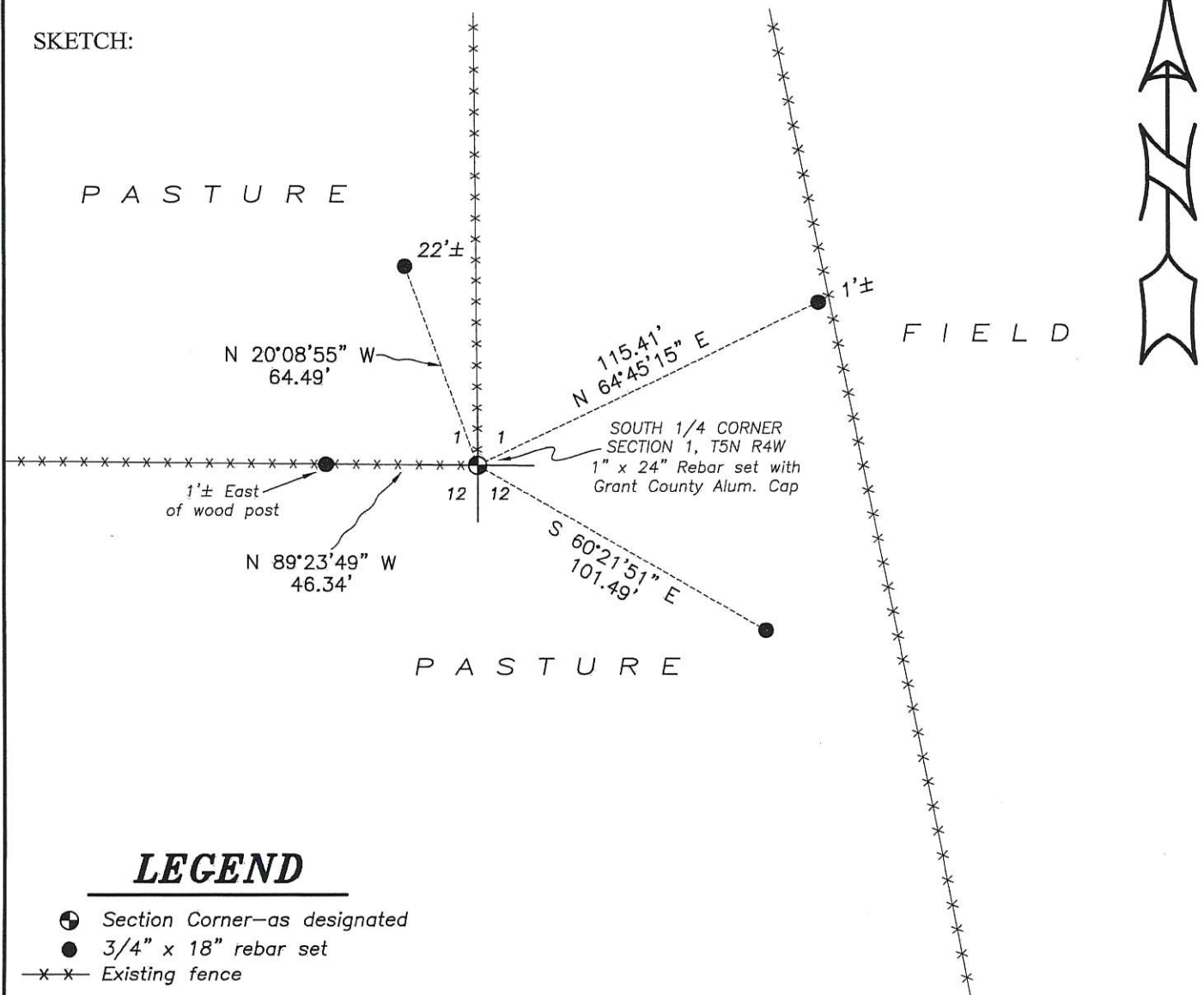
Corner was originally set in 1833 by Harvey Parke.
 No other record found for the corner.

DESCRIPTION OF CORNER EVIDENCE FOUND: (b) (f) (g) (h)

I reset the corner at an occupied fence corner West and North. Corner location was verified with G.P.S. and E.D.M. methods

DESCRIPTION OF CORNER AND WITNESS MONUMENTS, references and accessories used to perpetuate the original or re-established location of this corner. (c) (d) (e)
 Witnesses to corner location Shane Austin.

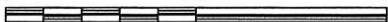
SKETCH:



LEGEND

- ⊙ Section Corner—as designated
- 3/4" x 18" rebar set
- x-x- Existing fence

0 50 100



SCALE 1" = 50'