

U.S. PUBLIC LAND SURVEY MONUMENT RECORD - GRANT COUNTY, WI

Section 1, Town 5 North Range 4 West, Town of Little Grant(a)

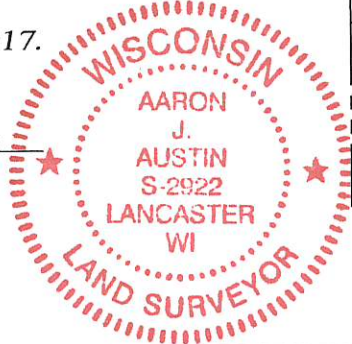
NOTE: This form is intended and designed to fulfill all requirements of the Wisconsin Administrative Code Chapter A-E 7.08, U.S. Public Land Survey Monument Record (3) (a) (b) (c) (d) (e) (f) (g) (h) (i).

CERTIFICATE: (i)

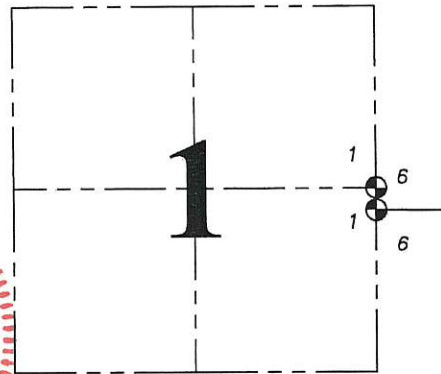
I, Aaron J. Austin, Wisconsin Professional Land Surveyor, do hereby certify that the corner location on this record was determined by me and/or under my direct supervision and that this U.S. Public Land Survey Monument Record is correct and complete to the best of my knowledge and belief.

Dated this 24th day of January, 2017.

Aaron J. Austin
 Aaron J. Austin, S-2922



Corner No. 020



⊙ = CORNER LOCATION

Grant County Coordinates:
 NAD 83 (2011)
 Northing: 556,492.75
 Easting: 799,191.92

HISTORY OF CORNER ESTABLISHMENT:

Lucius Lyon set the original corner in 1832.
 No other record found since original survey.

DESCRIPTION OF CORNER EVIDENCE FOUND: (b) (f) (g) (h)

I reset the corner at the recorded offset of 30 links (19.8 feet) from the West 1/4 corner of Section 6, Township 5 North, Range 3 West. Corner location was verified with G.P.S. and E.D.M. methods

DESCRIPTION OF CORNER AND WITNESS MONUMENTS, references and accessories used to perpetuate the original or re-established location of this corner. (c) (d) (e)

Witnesses to corner location Shane Austin.

SKETCH:

