

54017

U.S. PUBLIC LAND SURVEY MONUMENT RECORD - GRANT COUNTY, WI

Section 4, Town 5 North Range 4 West, Town of Little Grant (a)

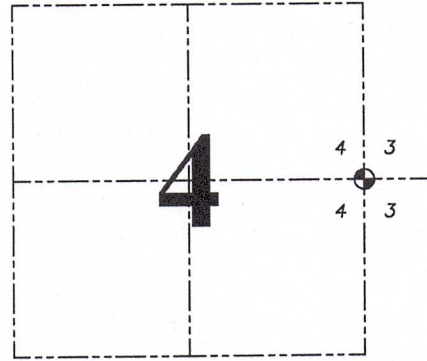
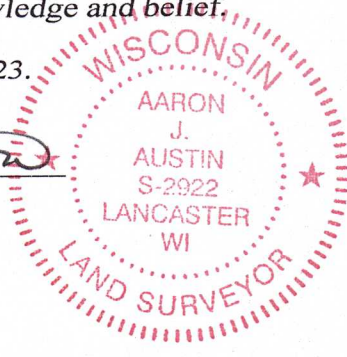
NOTE: This form is intended and designed to fulfill all requirements of the Wisconsin Administrative Code Chapter A-E 7.08, U.S. Public Land Survey Monument Record (3) (a) (b) (c) (d) (e) (f) (g) (h) (i).

CERTIFICATE: (i)

I, Aaron J. Austin, Wisconsin Professional Land Surveyor, do hereby certify that the corner location on this record was determined by me and/or under my direct supervision and that this U.S. Public Land Survey Monument Record is correct and complete to the best of my knowledge and belief.

Dated this 20th day of April, 2023.

Aaron J. Austin
Aaron J. Austin, S-2922



⊕ = CORNER LOCATION

Grant County Coordinates:
NAD 83 (2011)
Northing: 556,640.22
Easting: 783,299.75

HISTORY OF CORNER ESTABLISHMENT:

Original corner was set in 1833 by Harvey Parke.
Douglas Malliet set a 2" Iron Pipe and prepared a Survey Monument Record dated 11-30-1988.

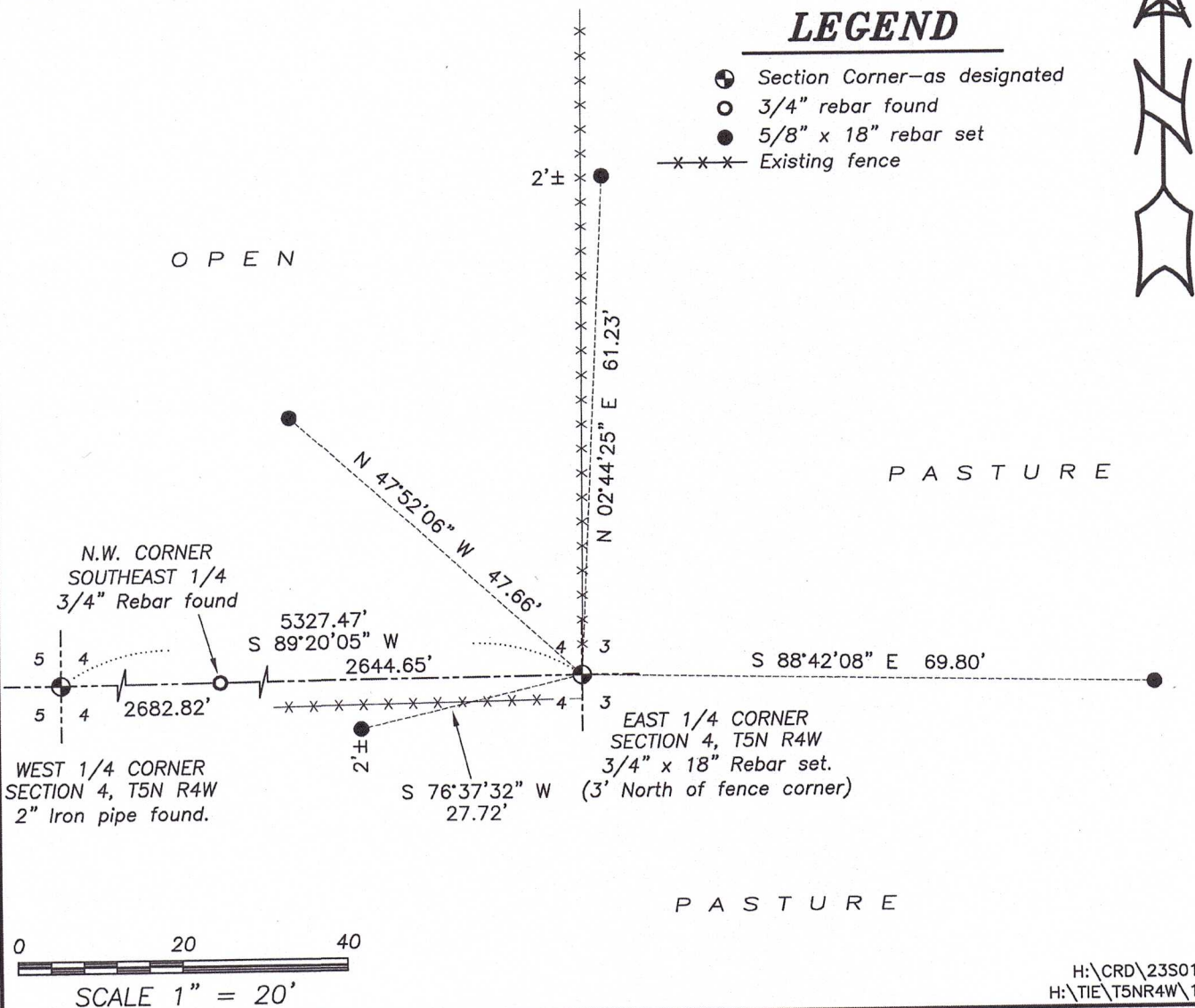
DESCRIPTION OF CORNER EVIDENCE FOUND: (b) (f) (g) (h)

I set a 3/4" x 18" Rebar at the intersection of a fence and the projection from the West 1/4 and the Center of Section 4. This location is 3' North of an existing fence corner North and West. I set four witness corners after I verified the Monument's location with G.P.S. and E.D.M. methods.

DESCRIPTION OF CORNER AND WITNESS MONUMENTS, references and accessories used to perpetuate the original or re-established location of this corner. (c) (d) (e)

Witnesses to corner location Shane Austin, Owen Austin, Tanner Austin.
Drawn by: Owen Austin.

SKETCH:



Little Grant

CORNER DESCRIPTION: E 1/4 CORNER, SECTION 04, T 5 N, R 4 W

STATE PLANE COORDINATES: N _____, E _____

THETA ANGLE: _____

HORIZONTAL DATUM: WISCONSIN STATE PLANE COORDINATE SYSTEM, SOUTH ZONE

EVIDENCE: EXISTING FENCE LINES TO NORTH & WEST

MONUMENT: FOUND , PLACED

METHOD OF RESTORATION (RE-ESTABLISHMENT):

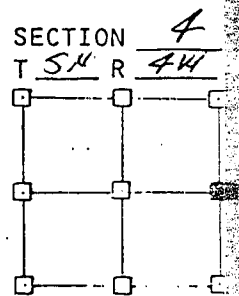
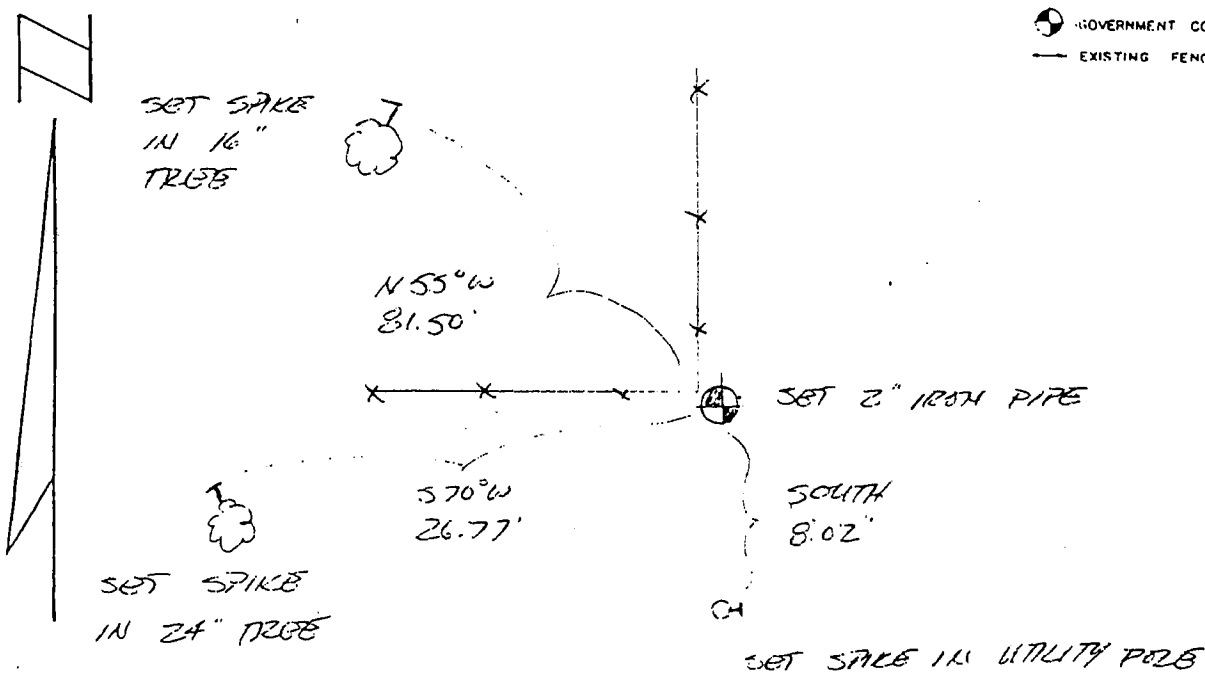
ACCEPTED EXISTING MONUMENT

N , E ACCEPTED OCCUPATION

N , E LOST CORNER PROPORTIONATE METHODS

DATE CORNER SET: 11-28-88

- LEGEND
- ▲ SET #6 REBAR, 113 LBS PER LINEAL FT MIN WT
 - SET 1" X 24" IRON PIPE, 113 LBS PER LINEAL FT MIN WT
 - SET 2" X 30" IRON PIPE, 365 LBS PER LINEAL FT MIN WT
 - FOUND 1" IRON PIPE
 - FOUND 2" IRON PIPE
 - FOUND R/R SPIKE
 - SET R/R SPIKE
 - ⊙ GOVERNMENT CORNER
 - EXISTING FENCE



NOT TO SCALE THIS CONFORMS TO WISCONSIN ADMINISTRATIVE CODE A-E 5.02

SURVEYOR'S AFFIDAVIT:

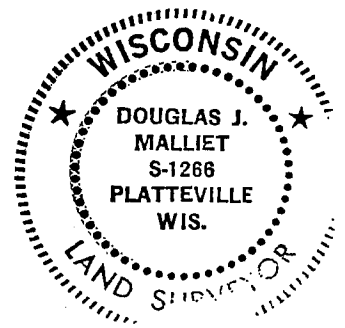
STATE OF WISCONSIN)

GRANT COUNTY) SS

I hereby certify that I, DOUGLAS J. MALLIET, have complied with the Wisconsin State Statutes, Statutes of the United States, and the rules and regulations made by the Secretary of the Interior in the location of the corner shown above.

DATE OF SURVEY: 11-30-88

Douglas J. Malliet
REGISTERED LAND SURVEYOR
1266



D. F. BURBACH MUNICIPAL & CIVIL ENGINEERS

410 NORTH SECOND STREET • PLATTEVILLE, WISCONSIN 53818 • (608) 348-3262

P. 17