

U.S. PUBLIC LAND SURVEY MONUMENT RECORD - GRANT COUNTY, WI

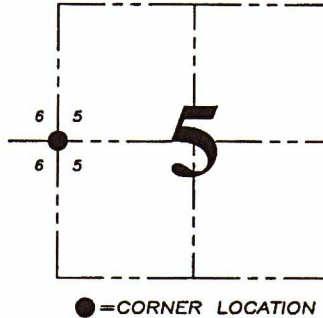
Section 5, Town 5 North Range 4 West, Town of Little Grant

CERTIFICATE:

I, Aaron J. Austin, Wisconsin Professional Land Surveyor, do hereby certify that the corner location on this record was determined by me and/or under my direct supervision and that this U.S. Public Land Survey Monument Record is correct and complete to the best of my knowledge and belief.

Dated this 24th day of July, 2015.

Aaron J. Austin
 Aaron J. Austin
 Wisconsin
 LAND SURVEYOR
 LANCASTER
 WI
 2922



● = CORNER LOCATION

HISTORY OF CORNER ESTABLISHMENT:

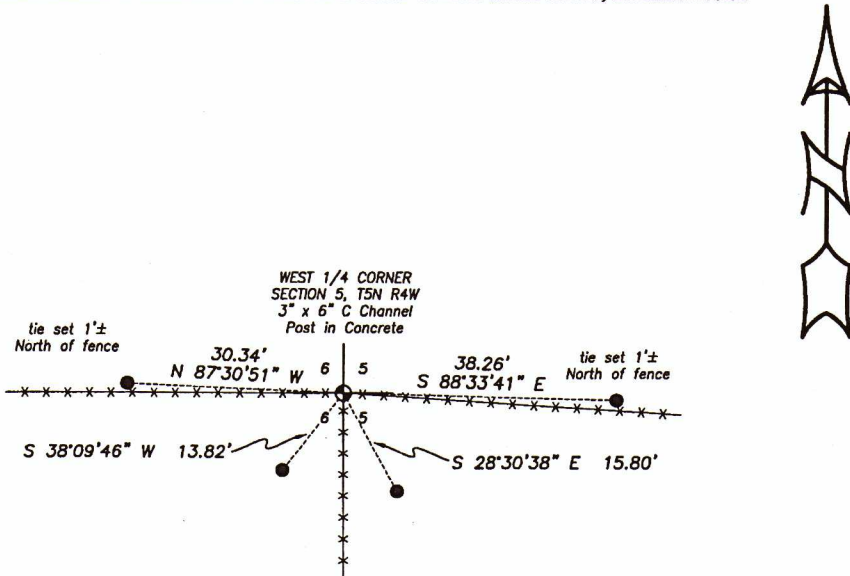
1833-Harvey Parke set original corner.
 1976-David Krohn tied to the corner on a Survey filed in Book G, Page 232.
 No other record found for this corner.

DESCRIPTION OF CORNER EVIDENCE FOUND:

David Krohn accepted a Steel Beam corner post on his survey filed in Book G, Page 232. I found and accepted a 3" x 6" Steel "C" Channel corner post in concrete at the existing fence intersection. I set 4 witness corners and verified this location with E.D.M. and G.P.S. methods.

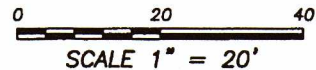
DESCRIPTION OF CORNER AND WITNESS MONUMENTS, references and accessories used to perpetuate the original or re-established location of this corner. Witnesses to corner location Shane Austin, Brandon Austin.

SKETCH:



LEGEND

- ⊙ Section Corner - as designated
- 1/2" x 12" Rebar set with red plastic "TIE" cap
- *- Existing fence



Austin Engineering LLC
 austinengineeringllc.com
 4211 HWY 81 E, LANCASTER, WI 53813
 PHONE: 608-723-6363 FAX: 608-723-6702

JOB NO: 15e126
 H:\CRD\15e126
 H:\TIE\T5NR4W\15

FIELDBOOK: TDSR
 DRAWN BY: AJ AUSTIN
 CREW: SW AUSTIN, BL AUSTIN