

U.S. PUBLIC LAND SURVEY MONUMENT RECORD - GRANT COUNTY, WI

Section 3, Town 5 North Range 4 West, Town of Little Grant (a)

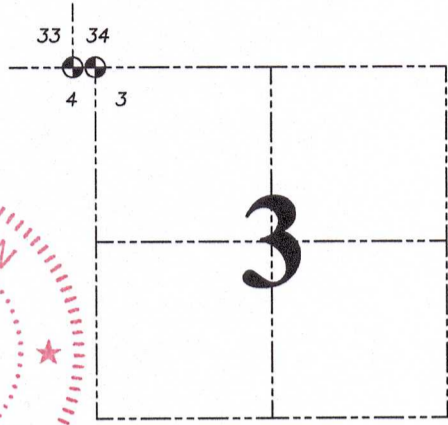
NOTE: This form is intended and designed to fulfill all requirements of the Wisconsin Administrative Code Chapter A-E 7.08, U.S. Public Land Survey Monument Record (3) (a) (b) (c) (d) (e) (f) (g) (h) (i).

CERTIFICATE: (i)

I, Aaron J. Austin, Wisconsin Professional Land Surveyor, do hereby certify that the corner location on this record was determined by me and/or under my direct supervision and that this U.S. Public Land Survey Monument Record is correct and complete to the best of my knowledge and belief.

Dated this 20th day of April, 2023.

Aaron J. Austin
 Aaron J. Austin, S-2922



● = CORNER LOCATION

Grant County Coordinates:
 NAD 83 (2011)
 Northing: 559,048.07
 Easting: 783,268.03

HISTORY OF CORNER ESTABLISHMENT:

Original corner was set in 1832 by Sibley.
 Douglas Malliet set a 2" Iron Pipe and prepared a Survey Monument Record dated 11-30-1988.

DESCRIPTION OF CORNER EVIDENCE FOUND: (b) (f) (g) (h)

I found a disturbed 2" Iron Pipe Malliet set. I reset the Corner at the recorded offset of 20 links from the Southwest Corner of Section 34 and online between the Southwest and the South 1/4 Corner of said Section 34. Two witness corners were found from Malliet. I established four witness corners do to the fact that Malliets ties were spikes in posts. I verified the Monument's location location with G.P.S. and E.D.M. methods.

DESCRIPTION OF CORNER AND WITNESS MONUMENTS: references and accessories used to perpetuate the original or re-established location of this corner. (c) (d) (e)

Witnesses to corner location Owen Austin, Tanner Austin.
 Drawn by: Owen Austin.

SKETCH:

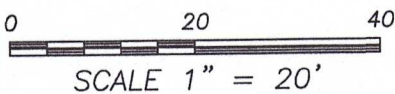
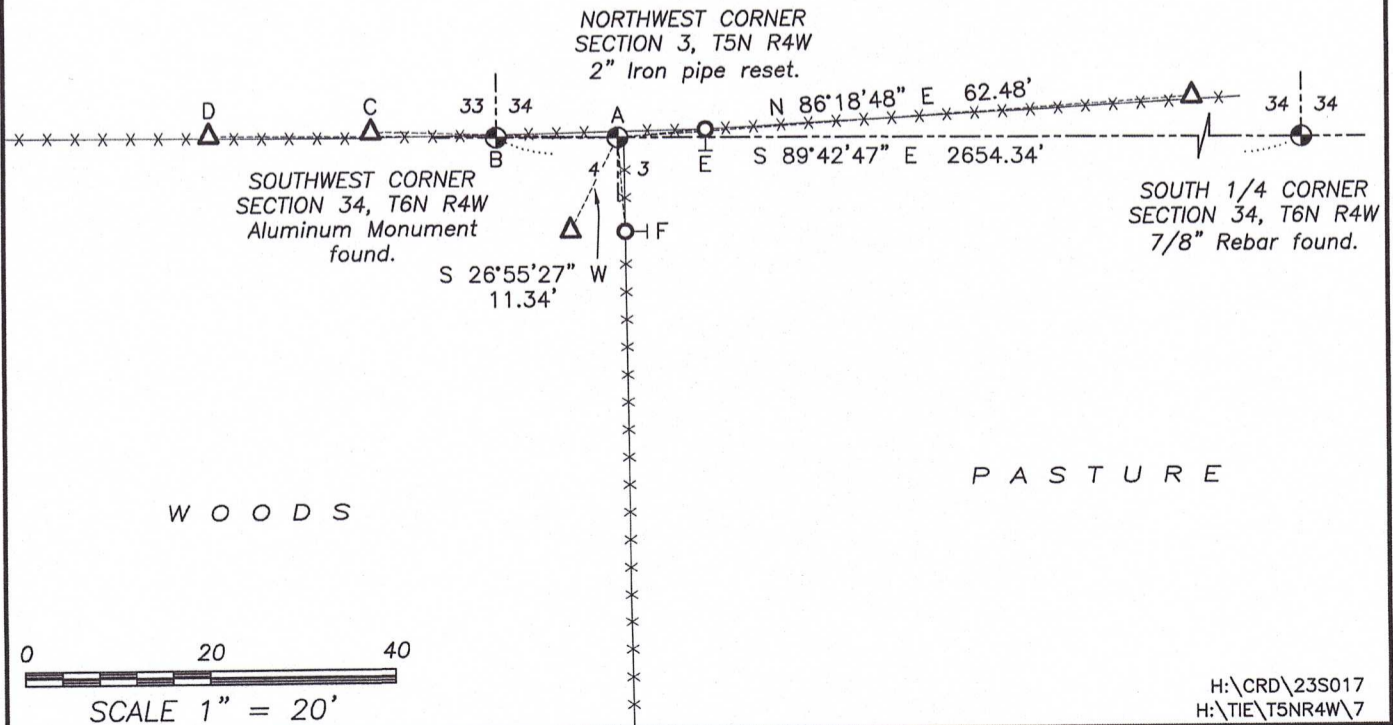
LEGEND

- Section Corner—as designated
- △ 1" diameter iron pipe found
- Spike in wood post
- x-x-x- Existing fence



LINE	BEARING	DISTANCE
A-B	N 89°42'47" W	13.20'
A-C	N 88°22'31" W	26.70'
A-D	N 89°24'55" W	44.24'
A-E	N 84°59'53" E	9.58'
A-F	S 04°25'34" E	10.25'

P A S T U R E



CORNER DESCRIPTION: NE CORNER, SECTION 4, T S N, R 4 W

STATE PLANE COORDINATES: N _____, E _____

THETA ANGLE: _____

HORIZONTAL DATUM: WISCONSIN STATE PLANE COORDINATE SYSTEM, SOUTH ZONE

EVIDENCE: EXISTING FENCE LINES TO WEST, SOUTH AND EAST

MONUMENT: FOUND , PLACED

METHOD OF RESTORATION (RE-ESTABLISHMENT):

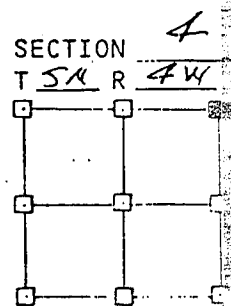
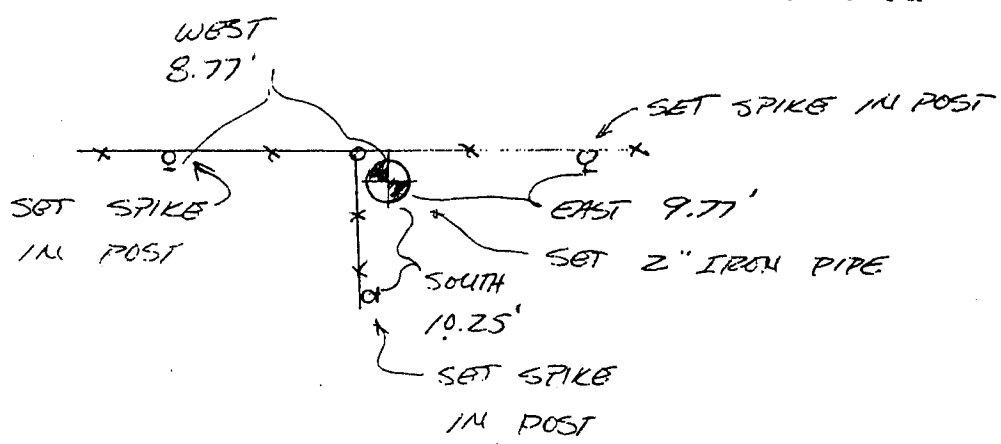
ACCEPTED EXISTING MONUMENT

N , E ACCEPTED OCCUPATION

N , E LOST CORNER PROPORTIONATE METHODS

DATE CORNER SET: 11.28.88

- LEGEND
- ▲ SET #6 REBAR, 1.13 LBS PER LINEAL FT MIN WT
 - SET 1" X 24" IRON PIPE, 1.13 LBS PER LINEAL FT MIN WT
 - SET 2" X 30" IRON PIPE, 3.65 LBS PER LINEAL FT MIN WT
 - FOUND 1" IRON PIPE
 - FOUND 2" IRON PIPE
 - FOUND R/R SPIKE
 - SET R/R SPIKE
 - ⊙ GOVERNMENT CORNER
 - EXISTING FENCE



NOT TO SCALE THIS CONFORMS TO WISCONSIN ADMINISTRATIVE CODE A-F 5.02

SURVEYOR'S AFFIDAVIT:

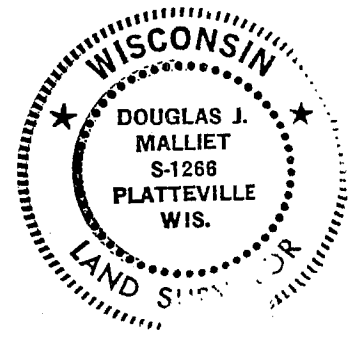
STATE OF WISCONSIN)

GRANT COUNTY) SS

I hereby certify that I, DOUGLAS J. MALLIET, have complied with the Wisconsin State Statutes, Statutes of the United States, and the rules and regulations made by the Secretary of the Interior in the location of the corner shown above.

DATE OF SURVEY: 11.30.88

Douglas J. Malliet
REGISTERED LAND SURVEYOR
12612



D. F. BURBACH MUNICIPAL & CIVIL ENGINEERS

410 NORTH SECOND STREET • PLATTEVILLE, WISCONSIN 53818 • (608) 348-3262

