

54000

U.S. PUBLIC LAND SURVEY MONUMENT RECORD - GRANT COUNTY, WI

Section 3, Town 5 North Range 4 West, Town of Little Grant (a)

NOTE: This form is intended and designed to fulfill all requirements of the Wisconsin Administrative Code Chapter A-E 7.08, U.S. Public Land Survey Monument Record (3) (a) (b) (c) (d) (e) (f) (g) (h) (i).

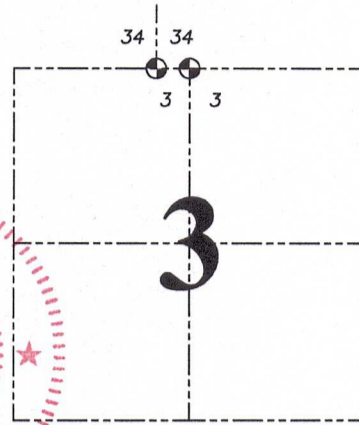
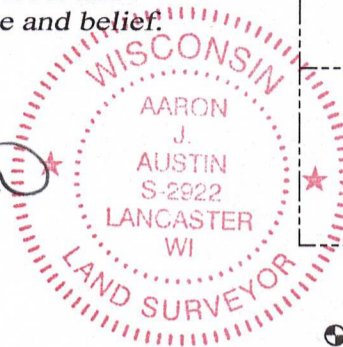
CERTIFICATE: (i)

I, Aaron J. Austin, Wisconsin Professional Land Surveyor, do hereby certify that the corner location on this record was determined by me and/or under my direct supervision and that this U.S. Public Land Survey Monument Record is correct and complete to the best of my knowledge and belief.

Dated this 20th day of April, 2023.

Aaron J. Austin

Aaron J. Austin, S-2922



⊙ = CORNER LOCATION

Grant County Coordinates:
NAD 83 (2011)
Northing: 559,034.84
Easting: 785,909.14

HISTORY OF CORNER ESTABLISHMENT:

Corner was not set with the Original Government Survey.
No other record was found for this Corner.

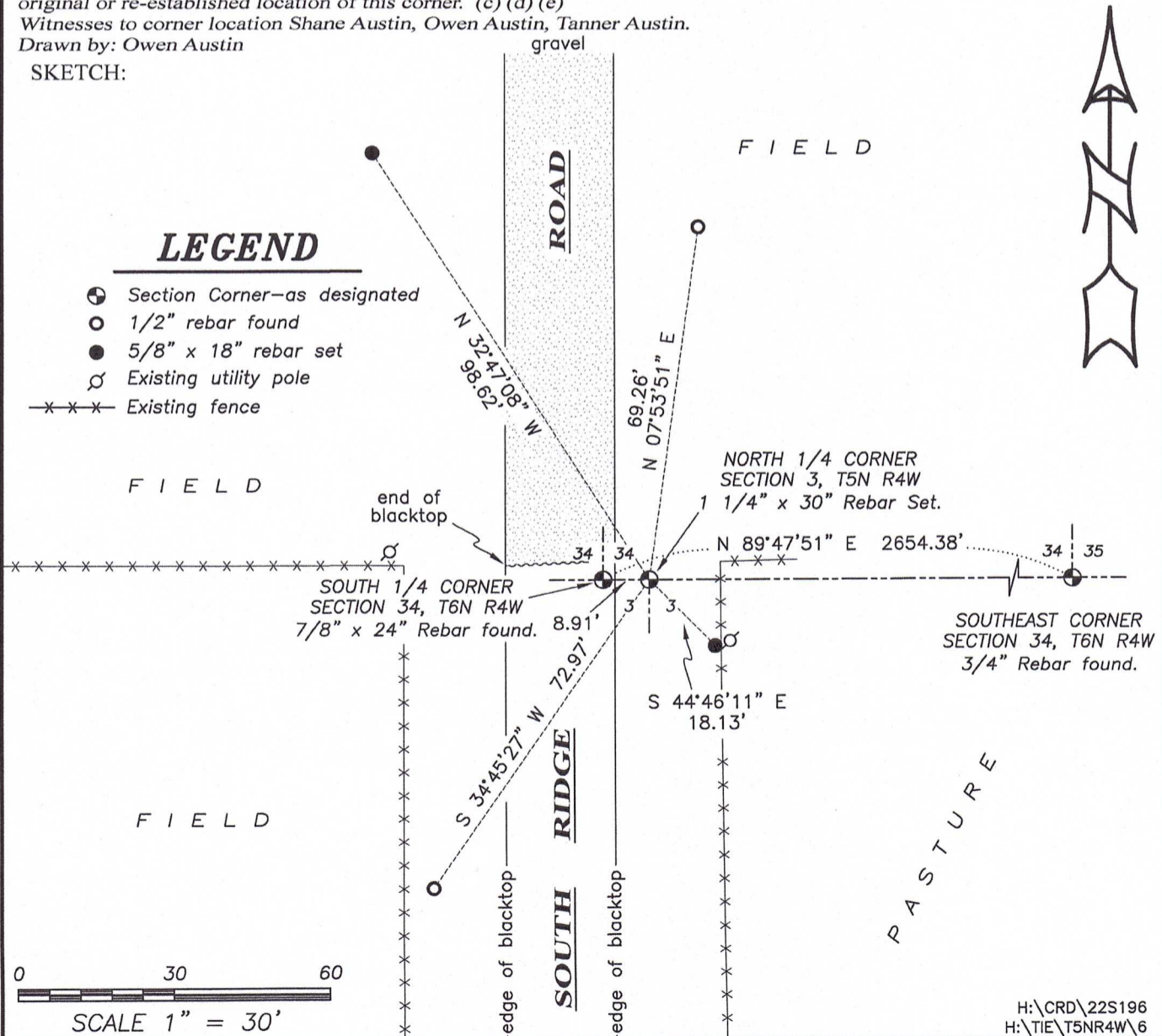
DESCRIPTION OF CORNER EVIDENCE FOUND: (b) (f) (g) (h)

I set a 1 1/4" x 30" Rebar on the Section line between the South 1/4 corner and the Southeast corner of Section 34 and equidistant between the Northwest and Northeast of Section 3. I established four witness corners after I verified the Monument's location with G.P.S. and E.D.M. methods.

DESCRIPTION OF CORNER AND WITNESS MONUMENTS, references and accessories used to perpetuate the original or re-established location of this corner. (c) (d) (e)

Witnesses to corner location Shane Austin, Owen Austin, Tanner Austin.
Drawn by: Owen Austin

SKETCH:



LEGEND

- ⊙ Section Corner—as designated
- 1/2" rebar found
- 5/8" x 18" rebar set
- ⊕ Existing utility pole
- x-x-x- Existing fence