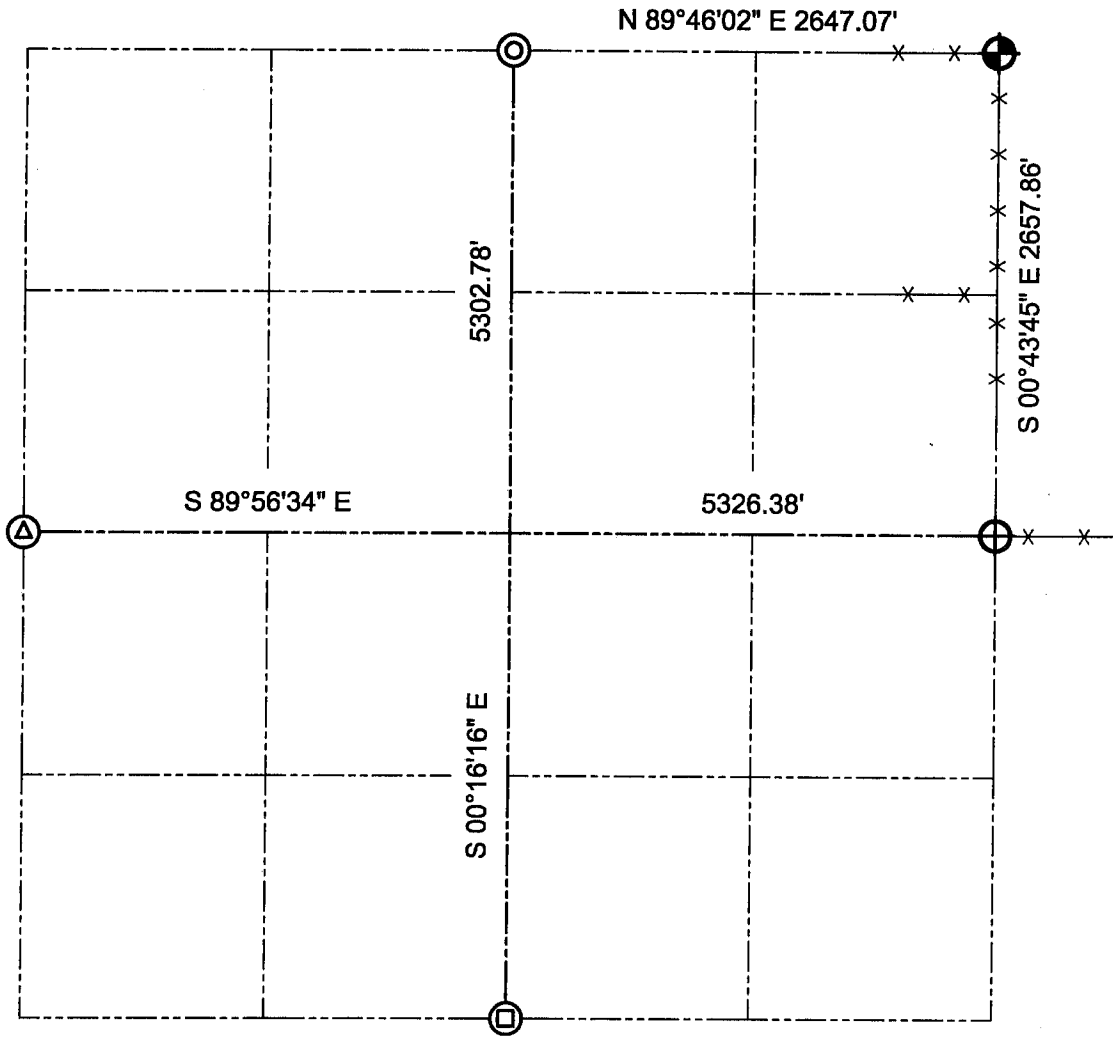







# GRANT COUNTY SECTION SUMMARY

$\frac{27}{SECTION} - \frac{5N}{TOWN} - \frac{3W}{RANGE}$



### LEGEND

-  Number 8 x 30" rebar set with Grant County Aluminum Cap
-  Number 8 rebar found with Grant County Aluminum Cap
-  Existing Number 6 rebar
-  Existing railroad spike
-  Existing 2" Iron pipe

### NOTE:

Relationships of all section corners to other section corners shall be shown hereon by bearing and distance of grid coordinates.  
~Bearing reference below~

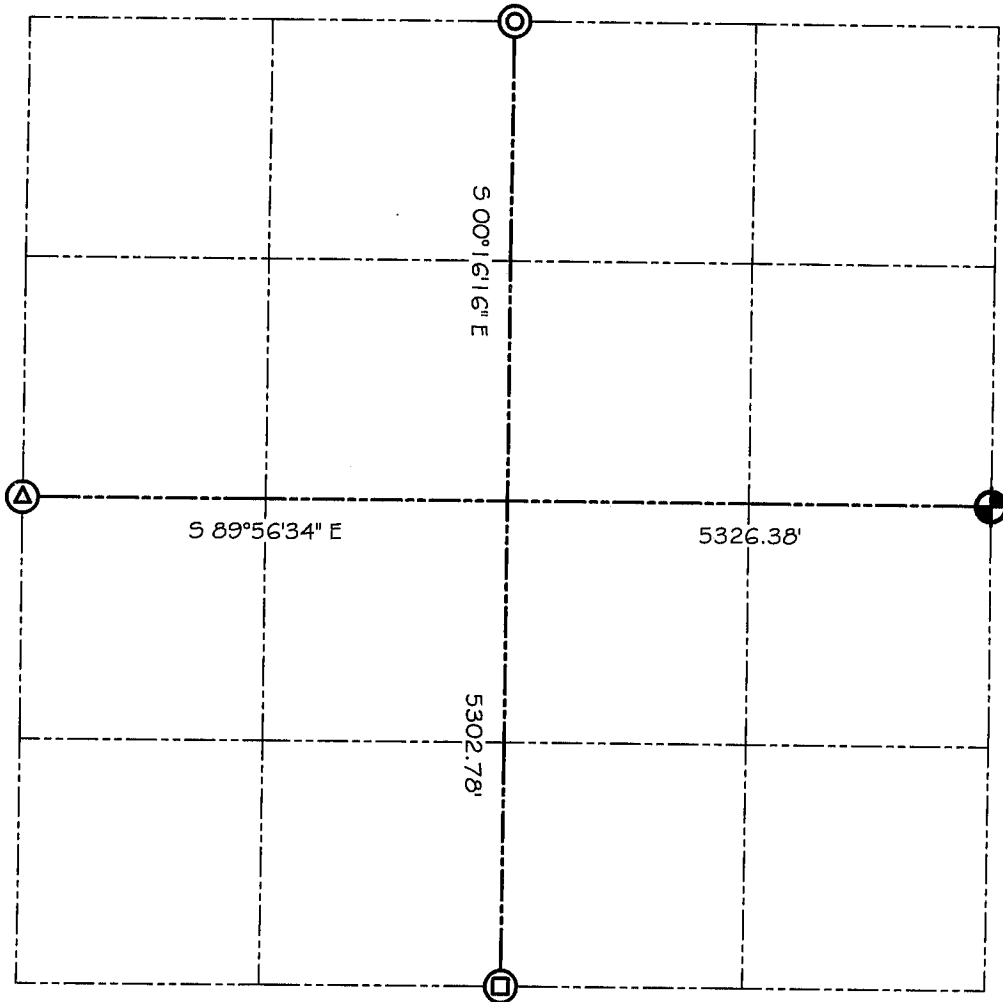


Bearings referenced to the East-West 1/4 line of Section 27, which is assumed to bear S 89°56'34" E.





MAR 24 2000

# GRANT COUNTY SECTION SUMMARY

27 - 5N - 3W  
SECTION TOWN RANGE



### LEGEND

-  NO. 8 X 30" REBAR SET WITH GRANT COUNTY ALUMINUM CAP
-  EXISTING NO. 6 REBAR
-  EXISTING RAILROAD SPIKE
-  EXISTING 2" IRON PIPE

### NOTE:

Relationships of all section corners to other section corners shall be shown hereon by bearing and distance or grid coordinates  
Show or describe bearing reference



BEARINGS REFERENCED TO THE EAST-WEST 1/4 LINE OF SECTION 27  
WHICH IS ASSUMED TO BEAR SOUTH 89° 56' 34" EAST.