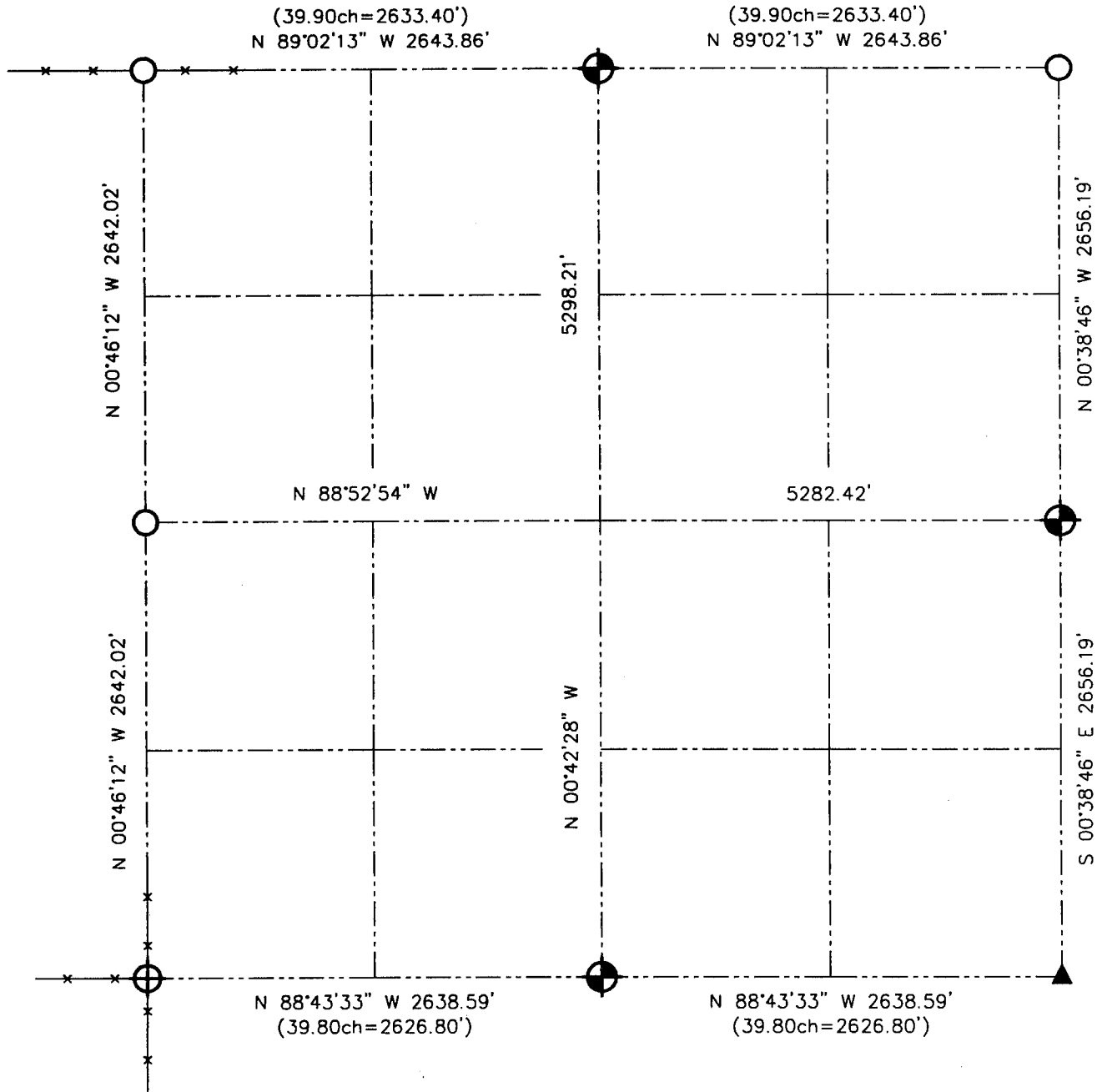






U.S. PUBLIC LAND SURVEY MONUMENT RECORD - GRANT COUNTY, WI

Summary of Section 23, Town 5 North Range 3 West, Town of North Lancaster

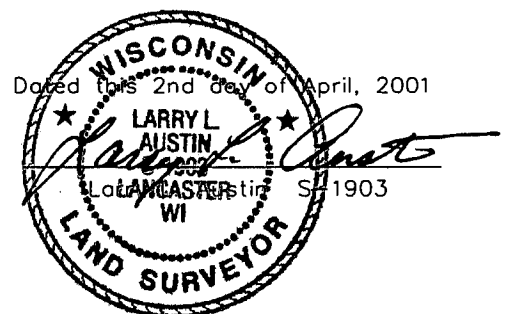


LEGEND

-  NUMBER 8 x 30" REBAR SET WITH GRANT COUNTY ALUMINUM CAP
-  NUMBER 8 REBAR FOUND WITH GRANT COUNTY ALUMINUM CAP
-  NUMBER 6 IRON BAR FOUND
-  2" IRON PIPE FOUND



Relationship of all section corners to other section corners shall be shown hereon by bearing and distance or grid coordinates. Bearing reference shown below.



Bearings referenced to the West line of the Southwest 1/4 of Section 23, which is assumed to bear N 00°46'12" W,

SKETCH NOT TO SCALE

AUSTIN ENGINEERING, LLC

4211 HWY 81 EAST, LANCASTER, WI 53813
PHONE 608-723-6363 FAX 608-723-6702

FIELDBOOK: SDR33, 2102
G: \T5NR3W\27
C: \SWA\TIE\T5NR3W\23SUM

CREW: BS-SB-SA-TF
DRAWN BY: SW AUSTIN
APPROVED: LL AUSTIN