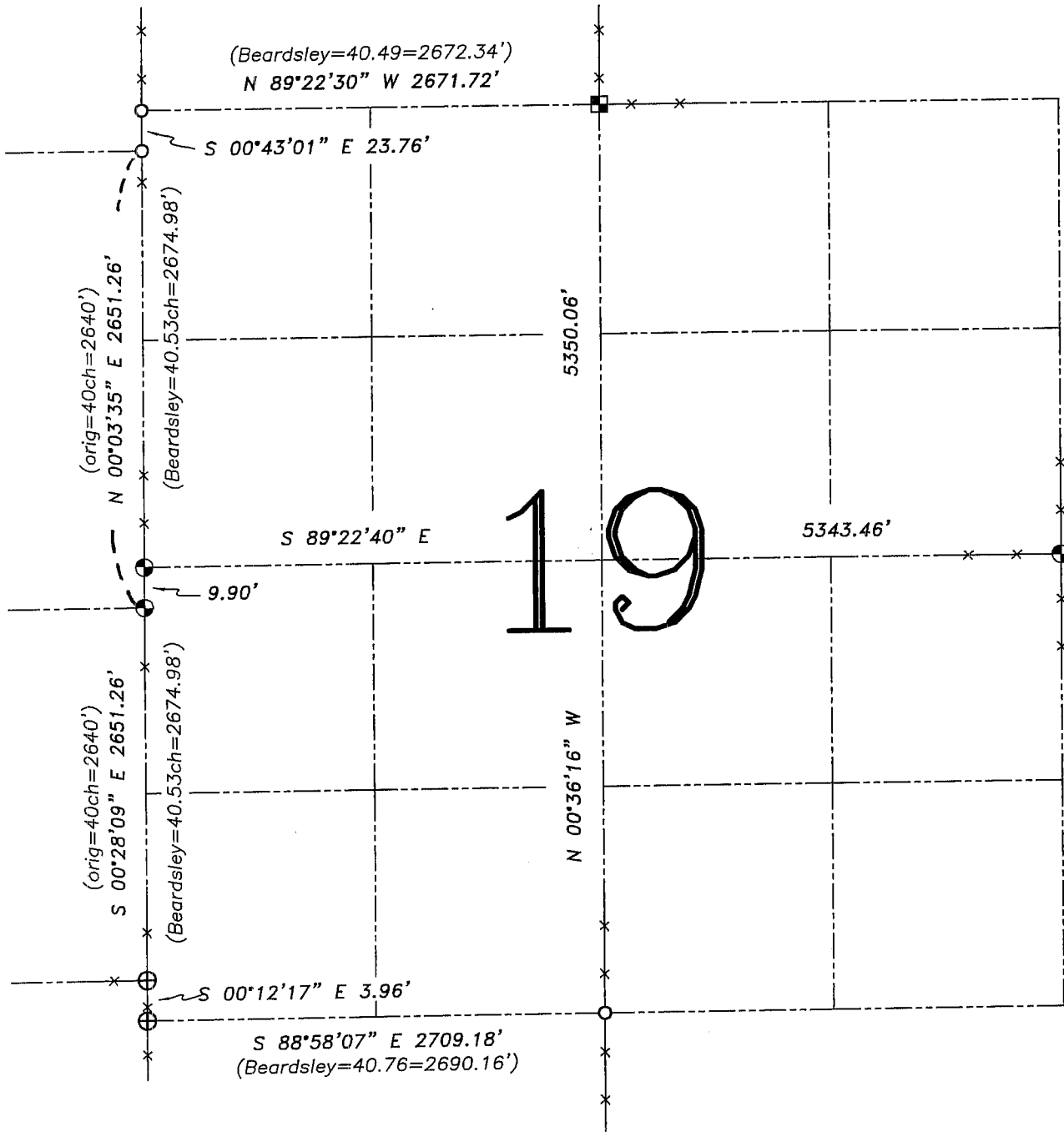
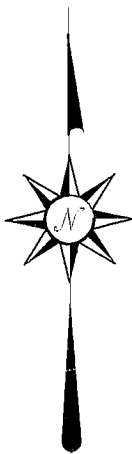


U.S. PUBLIC LAND SURVEY MONUMENT RECORD – GRANT COUNTY, WI
Summary of Section 19, Town 5 North, Range 3 West, Town of North Lancaster



LEGEND

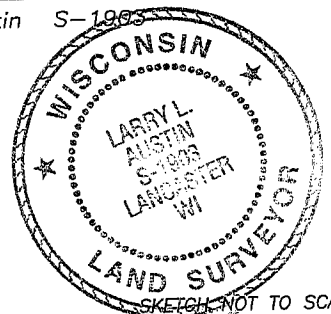
- ⊕ No. 8 rebar found with Grant County Aluminum Cap
- ⊗ No. 8 x 30" rebar set with Grant County Aluminum Cap – wt=2.67#/l.f.
- No. 6 rebar found
- Aluminum Monument found with Grant County Aluminum Cap
- () Recorded as
- x— Approximate location of existing fence



Relationship of all section corners to other section corners shall be shown hereon by bearing and distance or grid coordinates. Bearing reference shown below.

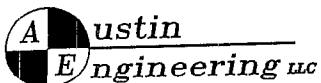
Dated this 30th day of August, 2005

Larry L. Austin
 Larry L. Austin S-1983



Bearings referenced to South line of the Southwest Quarter of Section 25, which is assumed to bear S 88°58'07" E

SKETCH NOT TO SCALE



4211 HWY 81 E, LANCASTER, WI 53813
 PHONE 608-723-6363 FAX 608-723-6702

JOB NUMBER: 05s136
 FIELDBOOK: TDSR, 2517
 G:\T5NR3W\08
 H:\TIE\T5NR3W\19SUM

DRAWN BY: ML DIGMAN
 APPROVED: LL AUSTIN