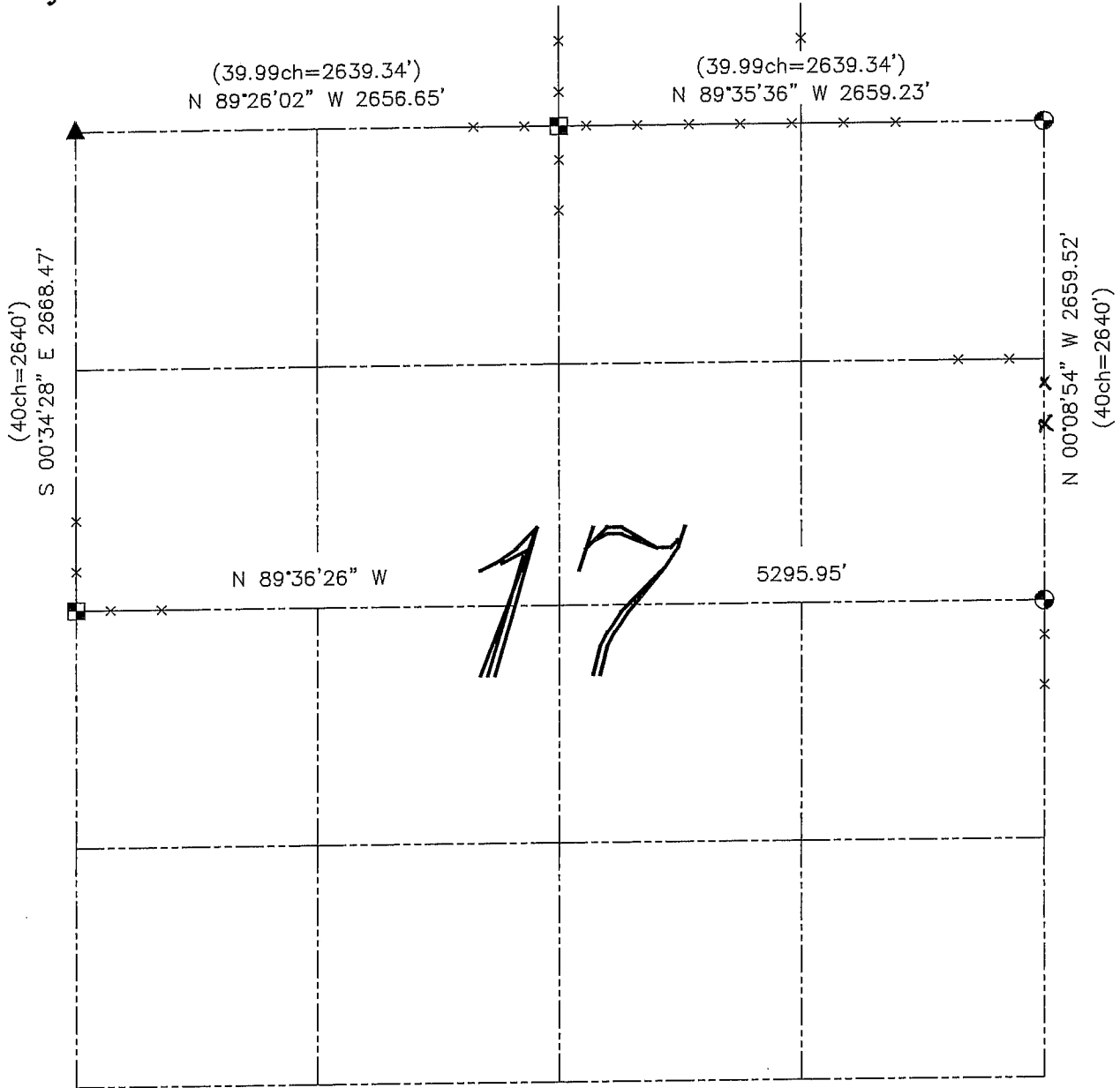


U.S. PUBLIC LAND SURVEY MONUMENT RECORD – GRANT COUNTY, WI
Summary of Section 17, Town 5 North, Range 3 West, Town of North Lancaster



LEGEND

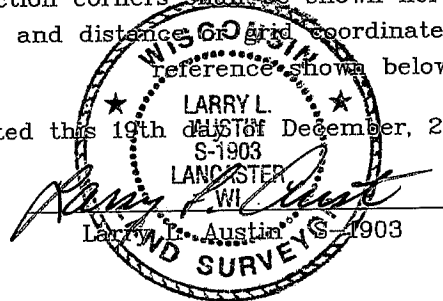
- ⊕ No. 8 rebar found with Grant County Aluminum Cap
- ⊙ No. 8 x 30" rebar set with Grant County Aluminum Cap – wt=2.67#/l.f.
- Aluminum Monument found with Grant County Aluminum Cap
- ▲ 2" diameter iron pipe post found

() Recorded as

—x— Approximate location of existing fence

Relationship of all section corners to other section corners shall be shown hereon by bearing and distance. Grid coordinates. Bearing reference shown below.

Dated this 19th day of December, 2003



Bearings referenced to the East-West Quarter line of this Section, which is assumed to bear as shown hereon.

SKETCH NOT TO SCALE