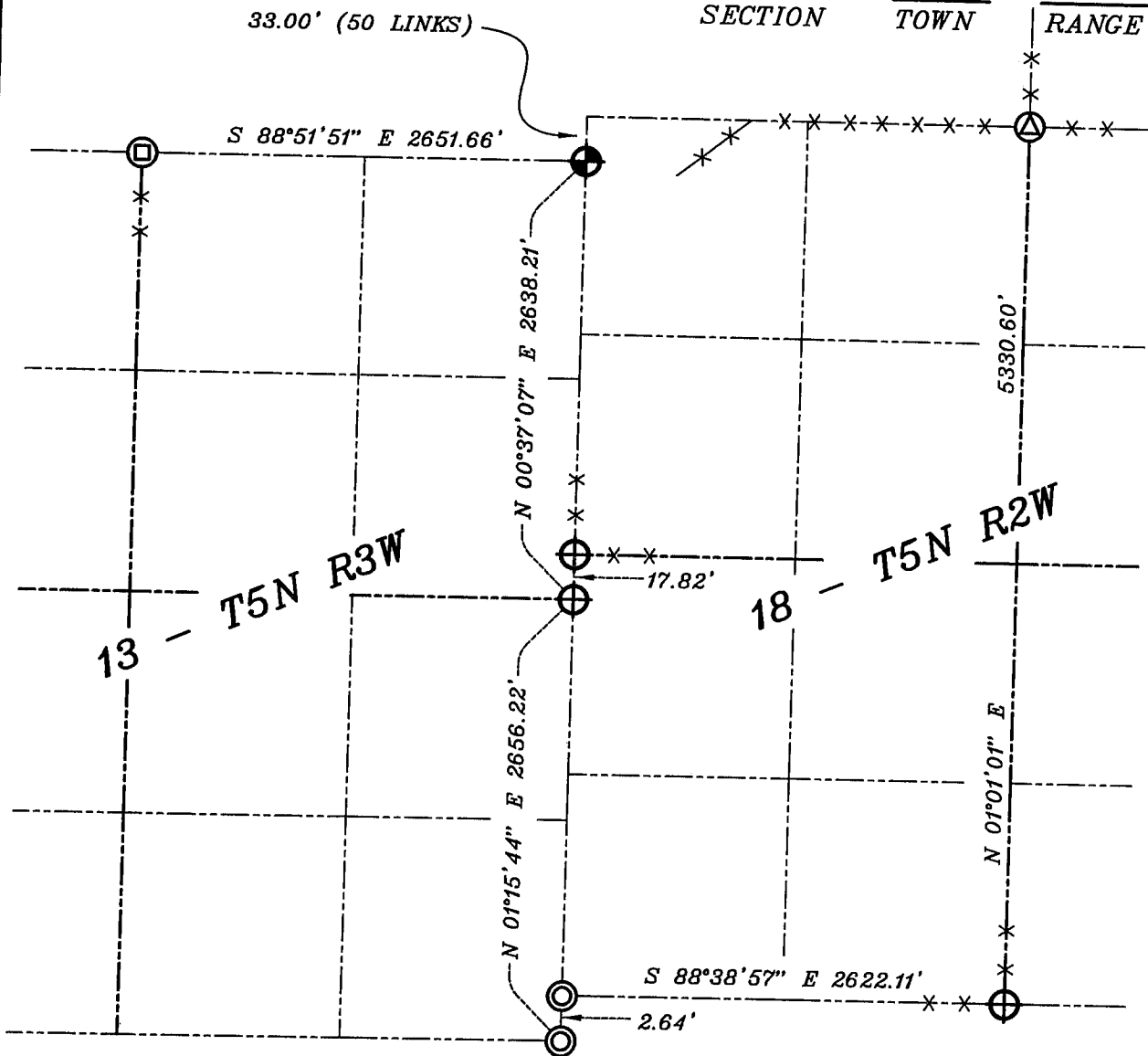


MAR 24 2000

GRANT COUNTY

DOUBLE SECTION SUMMARY

18	-	5N	-	2W
13	-	5N	-	3W
SECTION		TOWN		RANGE



LEGEND

- NO. 8 X 30" REBAR SET WITH GRANT COUNTY ALUMINUM CAP
- ALUMINUM MONUMENT FOUND
- NUMBER 6 IRON BAR FOUND
- NUMBER 10 IRON BAR FOUND
- 1" IRON PIPE FOUND

NOTE.

Relationships of all section corners to other section corners shall be shown hereon by bearing and distance or grid coordinates
 Show or describe bearing reference



BEARINGS REFERENCED TO THE EAST LINE OF THE SOUTHEAST QUARTER OF SECTION 13, WHICH IS ASSUMED TO BEAR N 01°15'44" E.