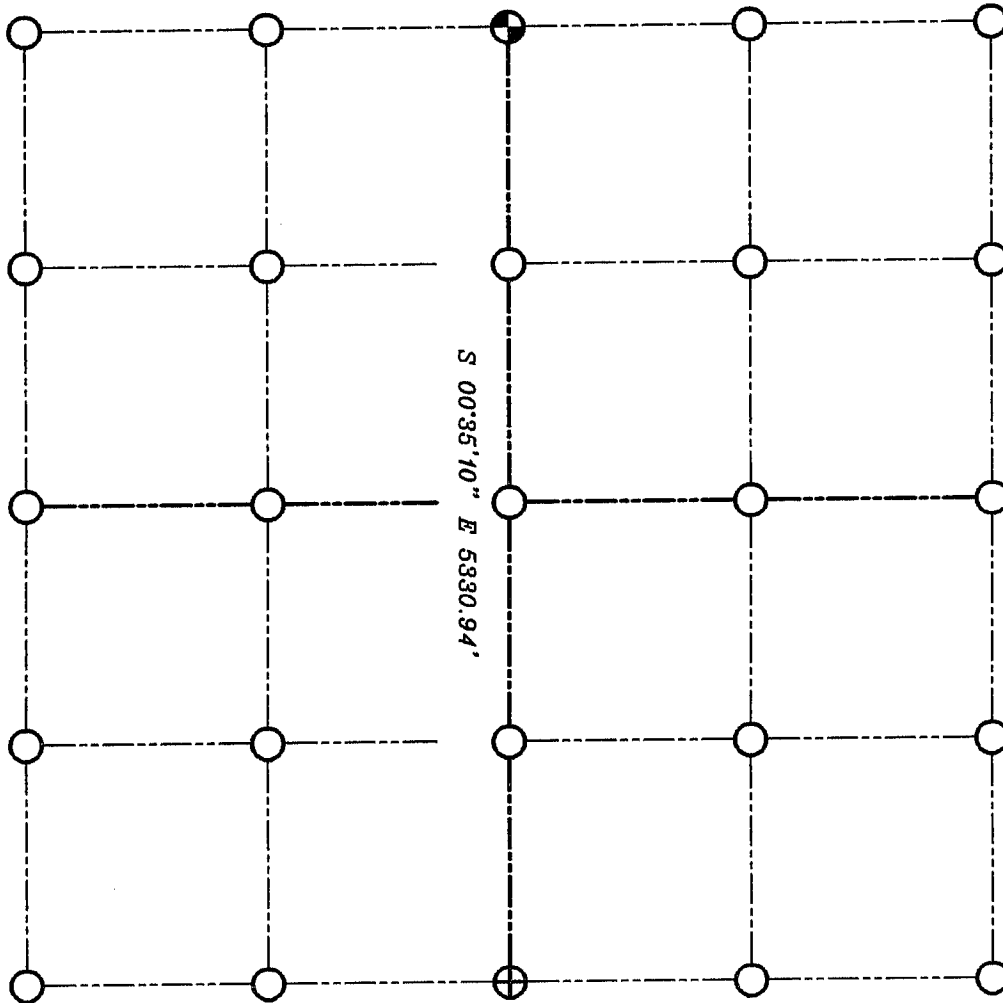


# GRANT COUNTY SECTION SUMMARY

$\frac{8}{\text{SECTION}} - \frac{5}{\text{TOWN}} - \frac{3}{\text{RANGE}}$



**LEGEND**

- ⊕ NO. 8 X 30" REBAR SET WITH GRANT COUNTY ALUMINUM CAP
- ⊕ EXISTING ALUMINUM MONUMENT

**NOTE:**

Relationships of all section corners to other section corners shall be shown hereon by bearing and distance or grid coordinates  
Show or describe bearing reference



BEARINGS REFERENCED TO THE NORTH-SOUTH 1/4 LINE OF SECTION 8, WHICH ASSUMED TO BEAR S 00°35'10" E.