

GRANT COUNTY U.S. PUBLIC LAND SURVEY MONUMENT RECORD

INSTRUCTIONS: THIS RECORD SHALL SHOW THE LOCATION OF THE CORNER AND SHALL INCLUDE ALL OF THE FOLLOWING ELEMENTS (A THROUGH I).

(A) IDENTIFY THE CORNER AS REFERENCED TO THE U.S. PUBLIC LAND SURVEY SYSTEM

■ = CORNER MONUMENT RESTORED

WITNESSES TO CORNER LOCATION:

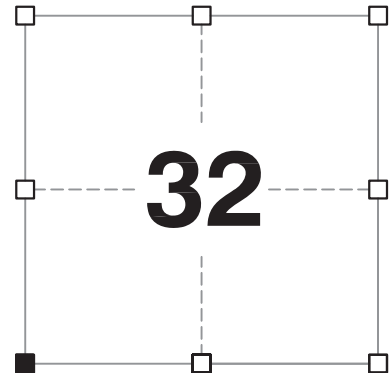
JAY P. ADAMS
STEVEN A. ALT

GEOGRAPHIC COORDINATES,
NAD 83 (2011) ADJUSTMENT:

LATITUDE: 42° 51' 28.16911"
LONGITUDE: 90° 45' 49.94306"

WISCONSIN COORDINATE REFERENCE SYSTEM (WISCRS),
GRANT COUNTY, NAD 83 (2011) ADJUSTMENT:

NORTHING: 527,234.12
EASTING: 804,687.35



SECTION 32
TOWNSHIP 5 NORTH, RANGE 3 WEST
TOWN OF NORTH LANCASTER

(B) DESCRIBE ANY RECORD EVIDENCE, MONUMENT EVIDENCE, OCCUPATIONAL EVIDENCE, TESTIMONIAL EVIDENCE OR ANY OTHER MATERIAL EVIDENCE YOU CONSIDERED, AND WHETHER THE MONUMENT WAS FOUND OR PLACED.

I COULD FIND NO MONUMENTS OR BEARING TREES FROM THE ORIGINAL GOVERNMENT SURVEY OR THE HISTORIC COUNTY SURVEYOR'S SUBSEQUENT RESURVEY. I RECOVERED THE 1.25" x 30" REBAR AND ALUMINUM CAP REFERENCED BY KRAMER AND AUSTIN. I ACCEPTED THIS LOCATION AS THE BEST AVAILABLE EVIDENCE OF THE ORIGINAL GOVERNMENT CORNER AND REPLACES IT WITH A 2" x 30" STAINLESS STEEL PIPE WITH A 4" GRANT COUNTY BRASS CAP.

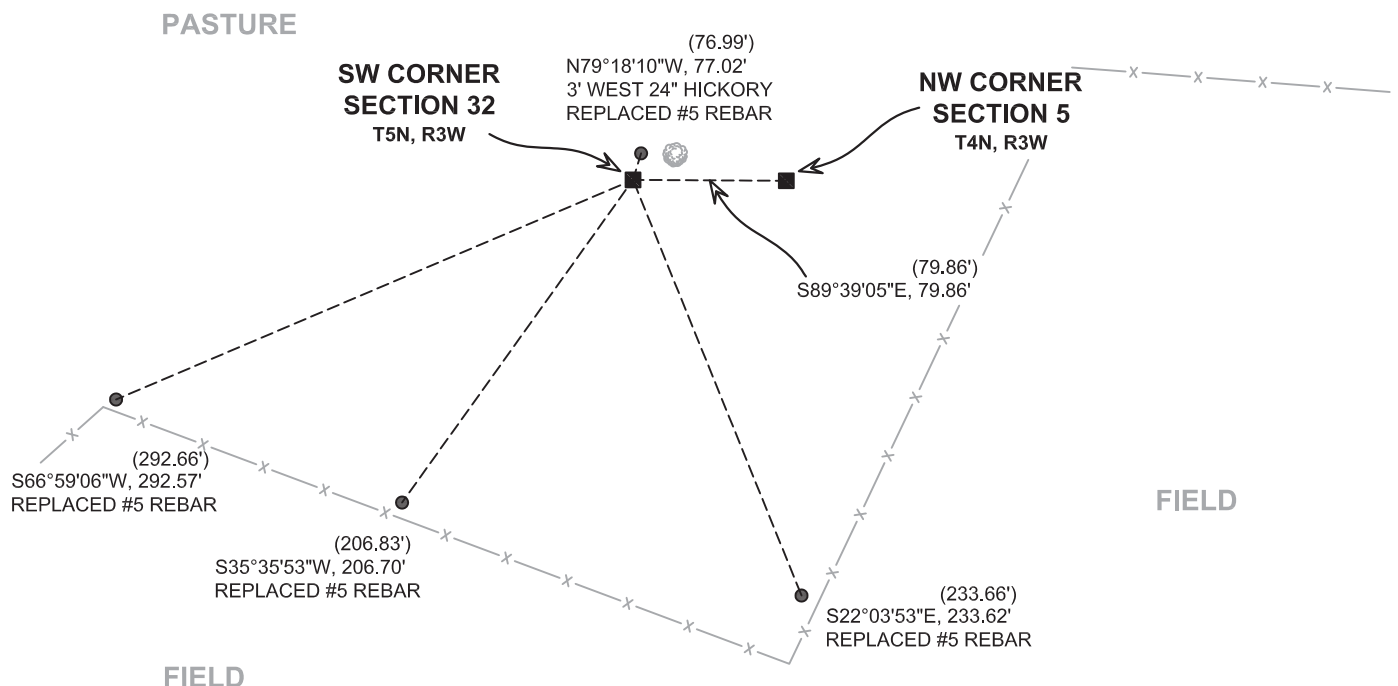
(C) IN THE PLAN VIEW DRAWING BELOW, PROVIDE REFERENCE TIES TO AT LEAST 4 WITNESS MONUMENTS. WITNESS MONUMENTS SHALL BE MADE OF CONCRETE, NATURAL STONE, IRON, BEARING TREES OR ANY OTHER EQUALLY DURABLE MATERIAL. DEPICT THE RELEVANT MONUMENTS AND REFERENCE TIES WITH SUFFICIENT DETAIL TO ENABLE ACCURATE RELOCATION OF THE CORNER IF THE CORNER MONUMENT IS DISTURBED.

(D)

LEGEND:

- SET 2" x 30" STAINLESS STEEL PIPE w/ 4" GRANT COUNTY BRASS CAP
- 3/4" x 24" IRON ROD SET AS ACCESSORY

PASTURE



FIELD

FIELD

Remonumentation

(E) DESCRIBE ANY MATERIAL DISCREPANCY BETWEEN THE LOCATION OF THE CORNER AS RESTORED OR REESTABLISHED AND THE LOCATION OF THAT CORNER AS PREVIOUSLY RESTORED OR REESTABLISHED BY DISTANCE AND DIRECTION. SHOW THE DISCREPANCY ON THE PLAN VIEW DRAWING UNDER (D), ABOVE. SHOW THE DISTANCES BETWEEN THE CORNER AS PREVIOUSLY RESTORED OR REESTABLISHED AND (1) THE CORNER AS RESTORED OR REESTABLISHED, AND (2) TO AT LEAST 2 OF THE WITNESS MONUMENTS SHOWN ON THE DRAWING IN (D) ABOVE.

N/A

(F) WAS THE CORNER RESTORED THROUGH ACCEPTANCE OF (1) AN OBLITERATED EVIDENCE LOCATION, OR (2) A FOUND PERPETUATED LOCATION?

(2) A FOUND PERPETUATED LOCATION.

(G&H) WAS THE CORNER REESTABLISHED THROUGH LOST CORNER PROPORTIONATE METHODS? IF SO, SHOW THE METHOD, INCLUDING THE DIRECTIONS AND DISTANCES TO OTHER PUBLIC LAND SURVEY CORNERS USED AS EVIDENCE OR USED FOR PROPORTIONING IN DETERMINING THE CORNER LOCATION.

N/A

CORNER HISTORY

THE ORIGINAL GOVERNMENT CORNER WAS ESTABLISHED BY LUCIUS LYON IN THE SECOND QUARTER OF 1832.

IN A SURVEY FILED IN VOLUME D, PAGE 239, CHARLES SAMPSON WAS AT THIS CORNER REFERENCING THAT HE SET IT BASED ON THE NORTHEAST CORNER OF SECTION 6, T4N, R3W.

IN A TIE SHEET DATED 17 OCTOBER 2005 AND A TIE SHEET DATED 23 JANUARY 2006, TRAVIS KRAMER SET A 1.25" IRON ROD WITH A GRANT COUNTY ALUMINUM CAP AT A LOCATION OF FENCE REMAINS NORTH AND EAST.

IN A PLAT OF SURVEY DATED 20 MAY 2008 LARRY AUSTIN FOUND THE NUMBER 8 REBAR WITH GRANT COUNTY ALUMINUM CAP.

(I) I, JAY P. ADAMS, P.L.S. - 2879, CERTIFY THAT THE CORNER LOCATION SHOWN ON THIS RECORD WAS DETERMINED BY ME OR UNDER MY DIRECTION AND CONTROL AND THAT THIS U.S. PUBLIC LAND SURVEY MONUMENT RECORD IS CORRECT AND COMPLETE TO THE BEST OF MY KNOWLEDGE AND BELIEF.

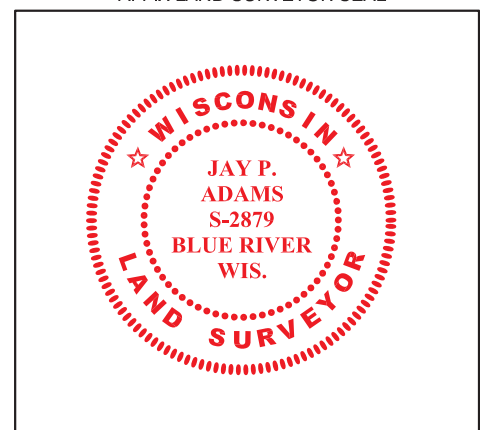


SIGNATURE

6 FEBRUARY 2019

DATE

AFFIX LAND SURVEYOR SEAL



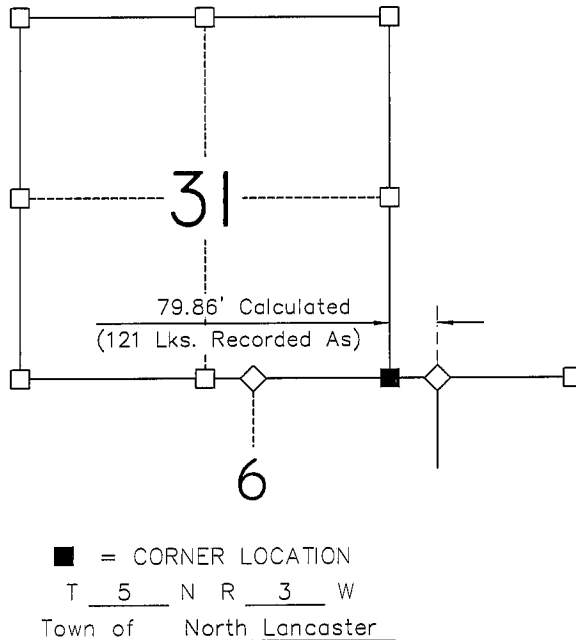
CERTIFIED LAND CORNER

STATE OF WISCONSIN)
 COUNTY OF GRANT) S.S.

CERTIFICATE

I, Travis J. Kramer, do hereby certify that
 on the 17th day of October, 2005
 I found (evidence)(~~no evidence~~) of the Southeast
Corner of Section 31, T. 5 N., R. 3 W.
 of the Fourth Principal Meridian, and I re-established
 said corner according to the Wisconsin Statutes as
 shown and described hereon.

Dated this 17th day of October
 Registered Land Surveyor S-2664



Seal

History of original corner establishment:

ORIGINAL GOVERNMENT SURVEY (EXTERIOR) BY LUCIUS LYON IN THE SECOND QUARTER OF 1832. CHARLES SAMPSON OCCUPIED THE CORNER IN A SURVEY FILED IN BOOK D, PAGE 239 IN THE GRANT COUNTY PROPERTY LISTERS OFFICE.

Description of corner evidence found:

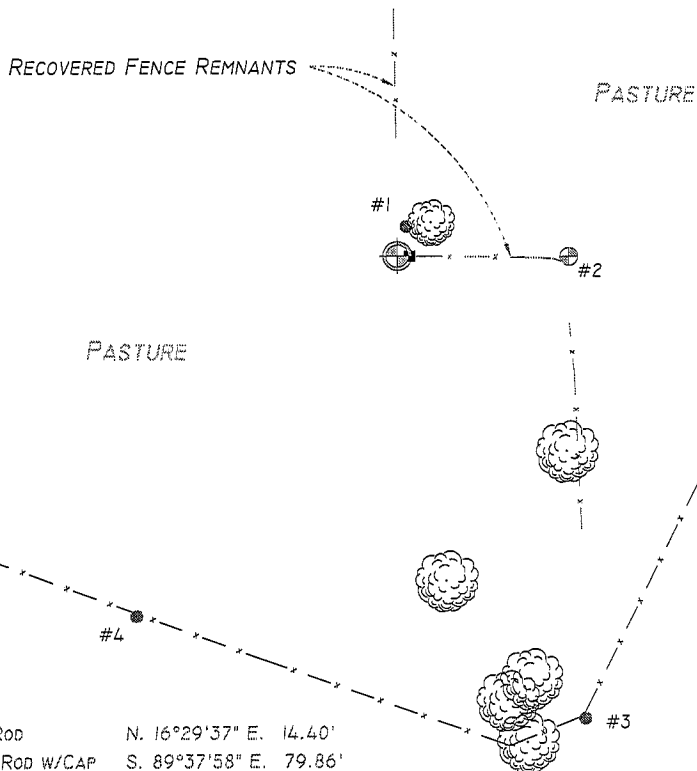
CORNER WAS RESET ONLINE AND AT THE RECORDED OFFSET DISTANCE FROM THE NORTHEAST CORNER OF SECTION 6, TOWN 4 NORTH, RANGE 3 WEST. THE CORNER IS IN AGREEMENT WITH THE SURVEY PERFORMED BY CHARLES SAMPSON IN THE SECOND QUARTER OF 1895. IN ADDITION, BURIED FENCE REMNANTS WERE FOUND NORTH AND EAST OF THE CORNER, AND AN UNRECORDED STONE MEASURING 16"x 8"x 30" WAS RECOVERED IN THE VICINITY.

Description of corner and witness monuments, references and accessories used to perpetuate the original or re-established location of this corner:

Witnesses to corner location:

Travis J. Kramer
Jay P. Adams

Sketch:



- ⊕ 1 1/4" x 30" IRON ROD w/CAP SET AT CORNER LOCATION
- 5/8" x 24" IRON ROD SET AS ACCESSORY
- FOUND DISTURBED STONE LOCATED 3.5 FEET EAST OF CORNER

BEARINGS ARE REFERENCED TO THE WISCONSIN COUNTY COORDINATE SYSTEM (WCCS), GRANT COUNTY, NAD 83 (1991) ADJUSTMENT.

Accessory Ties:

- | | |
|--------------------------|-------------------------|
| 1. 5/8" IRON ROD | N. 16°29'37" E. 14.40' |
| 2. 1 1/4" IRON ROD W/CAP | S. 89°37'58" E. 79.86' |
| 3. 5/8" IRON ROD | S. 22°03'53" E. 233.66' |
| 4. 5/8" IRON ROD | S. 35°41'01" W. 206.83' |
| 5. 5/8" IRON ROD | S. 66°57'59" W. 292.66' |

SURVEY CONTROL ORDER

Horizontal	3rd
Vertical	-

GRANT COUNTY COORDINATE SYSTEM

Corner	North (Y)	East (X)	Elevation (Z)	Zone
Control Sta. Name	527232.615	804690.147	-	