

GRANT COUNTY U.S. PUBLIC LAND SURVEY MONUMENT RECORD

INSTRUCTIONS: THIS RECORD SHALL SHOW THE LOCATION OF THE CORNER AND SHALL INCLUDE ALL OF THE FOLLOWING ELEMENTS (A THROUGH I).

(A) IDENTIFY THE CORNER AS REFERENCED TO THE U.S. PUBLIC LAND SURVEY SYSTEM

■ = CORNER MONUMENT RESTORED

WITNESSES TO CORNER LOCATION:

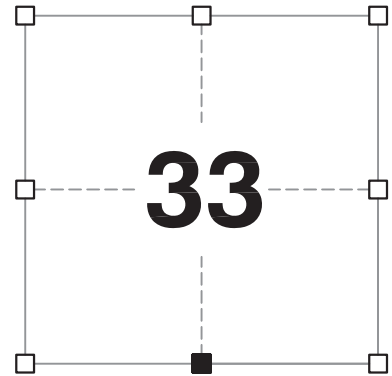
JAY P. ADAMS
TYLER D. ATKINSON

GEOGRAPHIC COORDINATES,
NAD 83 (2011) ADJUSTMENT:

LATITUDE: 42° 51' 27.39537"
LONGITUDE: 90° 44' 03.80502"

WISCONSIN COORDINATE REFERENCE SYSTEM (WISCRS),
GRANT COUNTY, NAD 83 (2011) ADJUSTMENT:

NORTHING: 527,160.56
EASTING: 812,593.15



SECTION 33
TOWNSHIP 5 NORTH, RANGE 3 WEST
TOWN OF NORTH LANCASTER

(B) DESCRIBE ANY RECORD EVIDENCE, MONUMENT EVIDENCE, OCCUPATIONAL EVIDENCE, TESTIMONIAL EVIDENCE OR ANY OTHER MATERIAL EVIDENCE YOU CONSIDERED, AND WHETHER THE MONUMENT WAS FOUND OR PLACED.

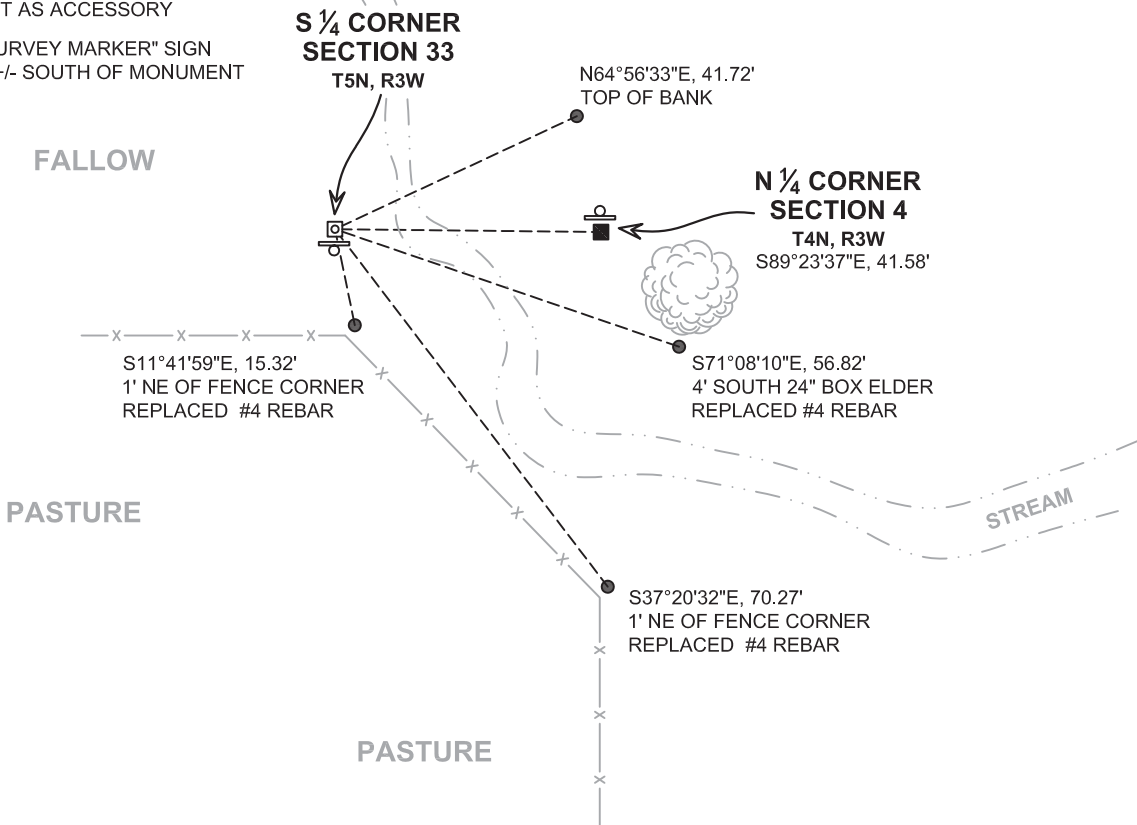
I COULD FIND NO MONUMENTS OR BEARING TREES FROM THE ORIGINAL GOVERNMENT SURVEY OR THE HISTORIC COUNTY SURVEYOR'S SUBSEQUENT RESURVEY. I WAS UNABLE TO RECOVER THE 1" REBAR SET BY AUSTIN AS IT APPEARS THAT THE CREEK HAS ERODED THE BANK AND WASHED AWAY THE MONUMENT. I RECOVERED TIES SET BY AUSTIN BUT DID NOT ACCEPT THE LOCATION OF HIS MONUMENT AS THE CORNER. HIS TIE SHEET STATES THAT HE SET THE CORNER BY THE SAME METHOD EMPLOYED BY BARBER IN 1876, HOWEVER HIS OFFSET DISTANCE FROM THE NORTH QUARTER CORNER OF SECTION 4, T4N, R3W IS OVER 10 FEET LESS THAN IT SHOULD BE. I REESTABLISHED THIS CORNER 41.58' (63 LINKS) OFFSET FROM THE NORTH QUARTER CORNER OF SAID SECTION 5 ON A LINE PROJECTED FROM THE SOUTHEAST CORNER OF SECTION 33 THROUGH THE NORTH QUARTER CORNER OF SECTION 4. I ACCEPTED THIS LOCATION AS THE BEST AVAILABLE EVIDENCE OF THE ORIGINAL GOVERNMENT CORNER AND REMONUMENTED IT WITH A 1.25" x 30" IRON ROD.

(C) IN THE PLAN VIEW DRAWING BELOW, PROVIDE REFERENCE TIES TO AT LEAST 4 WITNESS MONUMENTS. WITNESS MONUMENTS SHALL BE MADE OF CONCRETE, NATURAL STONE, IRON, BEARING TREES OR ANY OTHER EQUALLY DURABLE MATERIAL. DEPICT THE RELEVANT MONUMENTS AND REFERENCE TIES WITH SUFFICIENT DETAIL TO ENABLE ACCURATE RELOCATION OF THE CORNER IF THE CORNER MONUMENT IS DISTURBED.

(D)

LEGEND:

- SET 2" x 30" STAINLESS STEEL PIPE w/ 4" GRANT COUNTY BRASS CAP
- SET 1.25" x 30" IRON ROD
- 3/4" x 24" IRON ROD SET AS ACCESSORY
- ⊞ "SURVEY MARKER" SIGN 1' +/- SOUTH OF MONUMENT



Remonumentation

- (E) DESCRIBE ANY MATERIAL DISCREPANCY BETWEEN THE LOCATION OF THE CORNER AS RESTORED OR REESTABLISHED AND THE LOCATION OF THAT CORNER AS PREVIOUSLY RESTORED OR REESTABLISHED BY DISTANCE AND DIRECTION. SHOW THE DISCREPANCY ON THE PLAN VIEW DRAWING UNDER (D), ABOVE. SHOW THE DISTANCES BETWEEN THE CORNER AS PREVIOUSLY RESTORED OR REESTABLISHED AND (1) THE CORNER AS RESTORED OR REESTABLISHED, AND (2) TO AT LEAST 2 OF THE WITNESS MONUMENTS SHOWN ON THE DRAWING IN (D) ABOVE.

THIS CORNER WAS PREVIOUSLY REMONUMENTED WITH A 1" x 30" REBAR WITH GRANT COUNTY ALUMINUM CAP. THIS MONUMENT HAS BEEN OBLITERATED BY STREAM BANK EROSION. FOR THE LOCATION OF THAT CORNER, SEE THE PREVIOUSLY RECORDED TIE SHEET BY LARRY AUSTIN DATED 10 JANUARY 2008.

- (F) WAS THE CORNER RESTORED THROUGH ACCEPTANCE OF (1) AN OBLITERATED EVIDENCE LOCATION, OR (2) A FOUND PERPETUATED LOCATION?

(2) A FOUND PERPETUATED LOCATION.

- (G&H) WAS THE CORNER REESTABLISHED THROUGH LOST CORNER PROPORTIONATE METHODS? IF SO, SHOW THE METHOD, INCLUDING THE DIRECTIONS AND DISTANCES TO OTHER PUBLIC LAND SURVEY CORNERS USED AS EVIDENCE OR USED FOR PROPORTIONING IN DETERMINING THE CORNER LOCATION.

N/A

CORNER HISTORY

THE ORIGINAL GOVERNMENT CORNER WAS ESTABLISHED BY LUCIUS LYON IN THE SECOND QUARTER OF 1832.

IN A TIE SHEET DATED 10 JANUARY 2008 LARRY AUSTIN REMONUMENTED THE CORNER WITH A #8 x 30" REBAR WITH GRANT COUNTY ALUMINUM CAP AT THE "PROPORTIONED OFFSET" FROM THE NORTH QUARTER CORNER OF SECTION 4, T4N, R3W.

IT SHOULD BE NOTED THIS HISTORICALLY, IN A SURVEY DATED 26 DECEMBER 1876, JOEL BARBER ESTABLISHED THE NORTH QUARTER CORNER OF SAID SECTION 4, 63 LINKS EAST OF THE SOUTH QUARTER CORNER OF SECTION 33, T5N, R3W. THIS WOULD ALSO HAVE BEEN KNOWN AS THE "PROPORTIONED OFFSET" METHOD COMMONLY EMPLOYED TO ESTABLISH THE JUNIOR QUARTER CORNER.

THE OFFSET AT THE NORTHEAST AND NORTHWEST CORNERS OF SECTION 4 ARE 36 LINKS EAST AND 90 LINKS EAST, RESPECTIVELY. THIS WOULD GIVE AN AVERAGE OR "PROPORTIONATE OFFSET" 63 LINKS EAST OF THE SOUTH QUARTER CORNER OF SECTION 33, T5N, R3W.

- (I) I, JAY P. ADAMS, P.L.S. - 2879, CERTIFY THAT THE CORNER LOCATION SHOWN ON THIS RECORD WAS DETERMINED BY ME OR UNDER MY DIRECTION AND CONTROL AND THAT THIS U.S. PUBLIC LAND SURVEY MONUMENT RECORD IS CORRECT AND COMPLETE TO THE BEST OF MY KNOWLEDGE AND BELIEF.

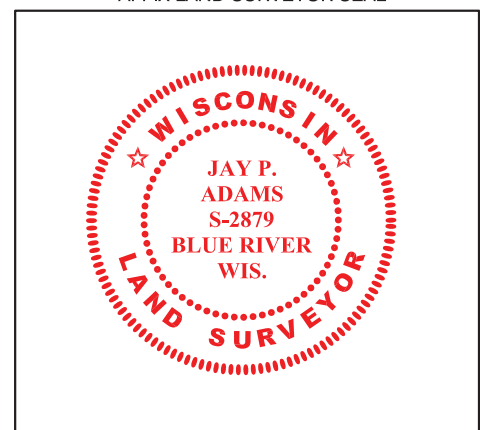


SIGNATURE

12 FEBRUARY 2019

DATE

AFFIX LAND SURVEYOR SEAL



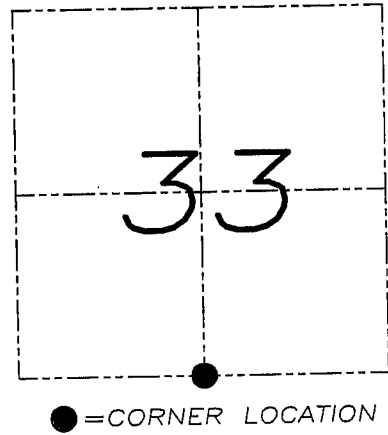
U.S. PUBLIC LAND SURVEY MONUMENT RECORD

Section 33, Town 5 North Range 3 West, Town of North Lancaster, Grant County, Wisconsin

CERTIFICATE

I, Larry L. Austin, do hereby certify that the corner location on this record was determined by me and/or under my direct supervision and that this U.S. public land survey monument record is correct and complete to the best of my knowledge and belief.

Larry L. Austin
 Larry L. Austin, S-1903 LANCASTER WI date 7-10-08



HISTORY OF CORNER

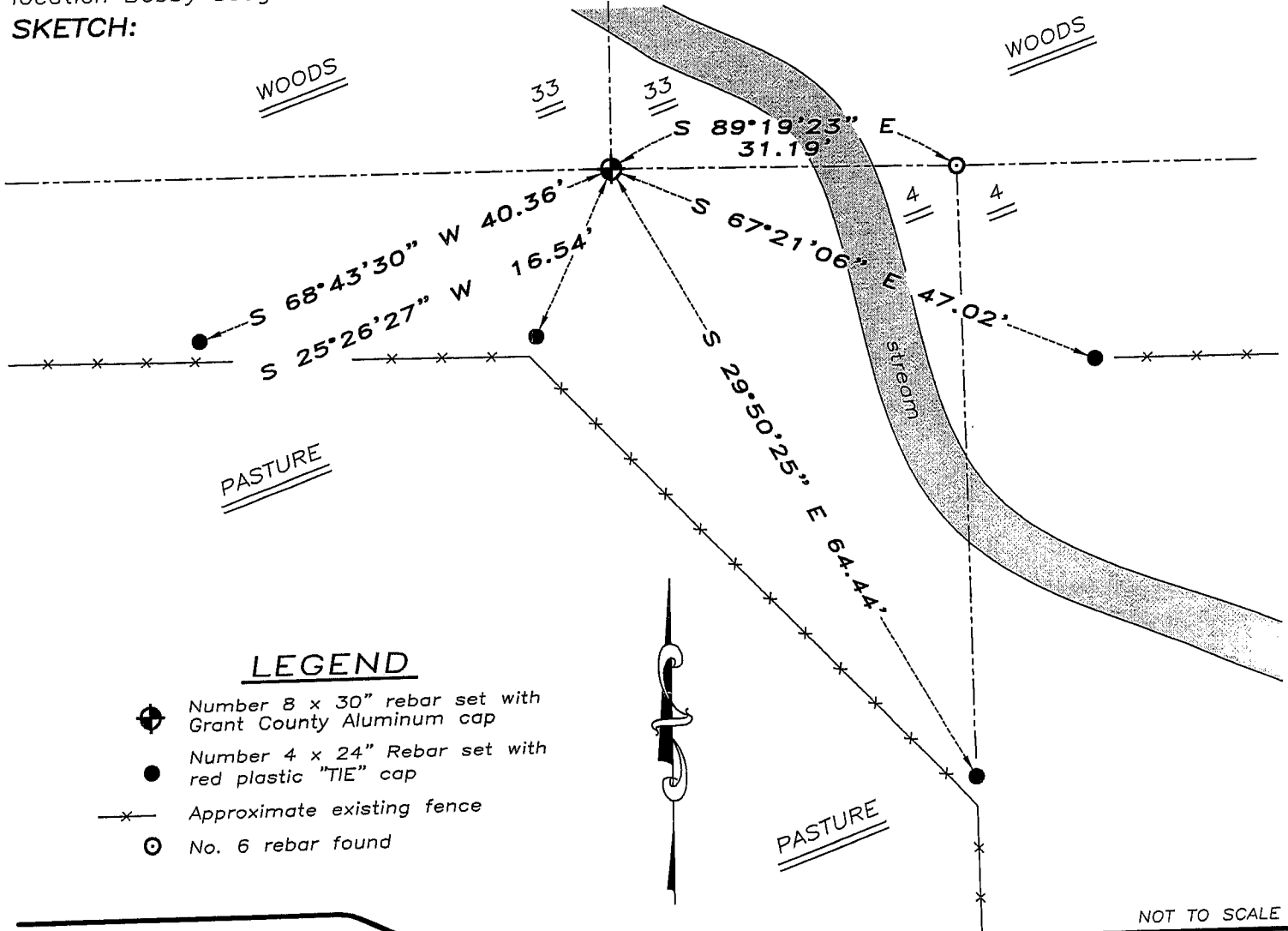
Corner was originally set by Lyon. No other record of the corner was found.

CORNER EVIDENCE FOUND

I reset the corner at the proportioned offset from the existing North 1/4 corner of Section 4, T4N R3W. Verified this location using EDM & GPS methods.

DESCRIPTION OF CORNER AND WITNESS MONUMENTS, references and accessories used to perpetuate the original or re-established location of this corner. Witnesses to monument location Bobby Sedgwick & Brad Digman & Shelby Blindert.

SKETCH:



Austin Engineering LLC

4211 HWY 81 E, LANCASTER, WI 53813
 PHONE 608-723-6363 FAX 608-723-6702

JOB NUMBER 07S237(2)
 FIELDBOOK: TDSR, 2710
 G:\T5NR3W\27
 H:\TIE\T5NR3W\128

DRAWN BY: SW AUSTIN
 APPROVED: LL AUSTIN