

GRANT COUNTY U.S. PUBLIC LAND SURVEY MONUMENT RECORD

INSTRUCTIONS: THIS RECORD SHALL SHOW THE LOCATION OF THE CORNER AND SHALL INCLUDE ALL OF THE FOLLOWING ELEMENTS (A THROUGH I).

(A) IDENTIFY THE CORNER AS REFERENCED TO THE U.S. PUBLIC LAND SURVEY SYSTEM

■ = CORNER MONUMENT RESTORED

WITNESSES TO CORNER LOCATION:

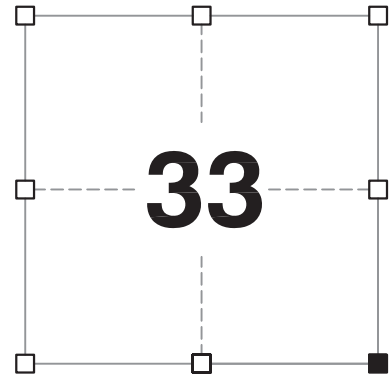
JAY P. ADAMS
TYLER D. ATKINSON

GEOGRAPHIC COORDINATES,
NAD 83 (2011) ADJUSTMENT:

LATITUDE: 42° 51' 27.09455"
LONGITUDE: 90° 43' 28.00480"

WISCONSIN COORDINATE REFERENCE SYSTEM (WISCRS),
GRANT COUNTY, NAD 83 (2011) ADJUSTMENT:

NORTHING: 527,132.34
EASTING: 815,259.79



SECTION 33
TOWNSHIP 5 NORTH, RANGE 3 WEST
TOWN OF NORTH LANCASTER

(B) DESCRIBE ANY RECORD EVIDENCE, MONUMENT EVIDENCE, OCCUPATIONAL EVIDENCE, TESTIMONIAL EVIDENCE OR ANY OTHER MATERIAL EVIDENCE YOU CONSIDERED, AND WHETHER THE MONUMENT WAS FOUND OR PLACED.

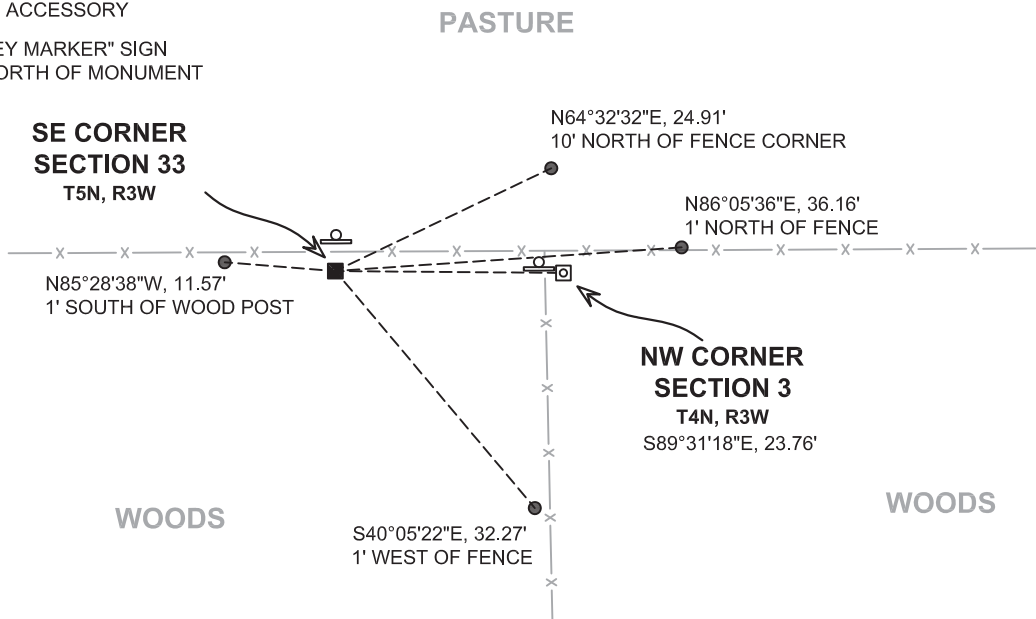
I COULD FIND NO MONUMENTS OR BEARING TREES FROM THE ORIGINAL GOVERNMENT SURVEY OR THE HISTORIC COUNTY SURVEYOR'S SUBSEQUENT RESURVEY. I RECOVERED THE 2" x 30" IRON PIPE SET BY MALLIET AND ACCEPTED IT AS THE BEST AVAILABLE EVIDENCE OF THE ORIGINAL GOVERNMENT CORNER AND REMONUMENTED IT WITH A 2" x 30" STAINLESS STEEL PIPE WITH A 4" GRANT COUNTY BRASS CAP.

(C) IN THE PLAN VIEW DRAWING BELOW, PROVIDE REFERENCE TIES TO AT LEAST 4 WITNESS MONUMENTS. WITNESS MONUMENTS SHALL BE MADE OF CONCRETE, NATURAL STONE, IRON, BEARING TREES OR ANY OTHER EQUALLY DURABLE MATERIAL. DEPICT THE RELEVANT MONUMENTS AND REFERENCE TIES WITH SUFFICIENT DETAIL TO ENABLE ACCURATE RELOCATION OF THE CORNER IF THE CORNER MONUMENT IS DISTURBED.

(D)

LEGEND:

- SET 2" x 30" STAINLESS STEEL PIPE
w/ 4" GRANT COUNTY BRASS CAP
- FOUND STONE MONUMENT
- 3/4" x 24" IRON ROD
SET AS ACCESSORY
- "SURVEY MARKER" SIGN
2' +/- NORTH OF MONUMENT



Remonumentation

(E) DESCRIBE ANY MATERIAL DISCREPANCY BETWEEN THE LOCATION OF THE CORNER AS RESTORED OR REESTABLISHED AND THE LOCATION OF THAT CORNER AS PREVIOUSLY RESTORED OR REESTABLISHED BY DISTANCE AND DIRECTION. SHOW THE DISCREPANCY ON THE PLAN VIEW DRAWING UNDER (D), ABOVE. SHOW THE DISTANCES BETWEEN THE CORNER AS PREVIOUSLY RESTORED OR REESTABLISHED AND (1) THE CORNER AS RESTORED OR REESTABLISHED, AND (2) TO AT LEAST 2 OF THE WITNESS MONUMENTS SHOWN ON THE DRAWING IN (D) ABOVE.

N/A

(F) WAS THE CORNER RESTORED THROUGH ACCEPTANCE OF (1) AN OBLITERATED EVIDENCE LOCATION, OR (2) A FOUND PERPETUATED LOCATION?

(2) A FOUND PERPETUATED LOCATION.

(G&H) WAS THE CORNER REESTABLISHED THROUGH LOST CORNER PROPORTIONATE METHODS? IF SO, SHOW THE METHOD, INCLUDING THE DIRECTIONS AND DISTANCES TO OTHER PUBLIC LAND SURVEY CORNERS USED AS EVIDENCE OR USED FOR PROPORTIONING IN DETERMINING THE CORNER LOCATION.

N/A

CORNER HISTORY

THE ORIGINAL GOVERNMENT CORNER WAS ESTABLISHED BY LUCIUS LYON IN THE SECOND QUARTER OF 1832.

IN A HISTORIC SURVEY DATED APRIL 1892, IT WAS REPORTED THAT THE STUMPS OF BOTH ORIGINAL BEARING TREES WERE PRESENT.

IN A TIE SHEET DATED 5 JANUARY 1983, DOUGLAS MALLIET SET A 2" x 30" IRON PIPE AT THE RECORDED GOVERNMENT OFFSET FROM THE STONE MONUMENT AT THE NORTHWEST CORNER OF SECTION 3, T4N, R3W.

SINCE THEN, THE 2" IRON PIPE HAS BEEN UTILIZED AS THE CORNER.

(I) I, JAY P. ADAMS, P.L.S. - 2879, CERTIFY THAT THE CORNER LOCATION SHOWN ON THIS RECORD WAS DETERMINED BY ME OR UNDER MY DIRECTION AND CONTROL AND THAT THIS U.S. PUBLIC LAND SURVEY MONUMENT RECORD IS CORRECT AND COMPLETE TO THE BEST OF MY KNOWLEDGE AND BELIEF.

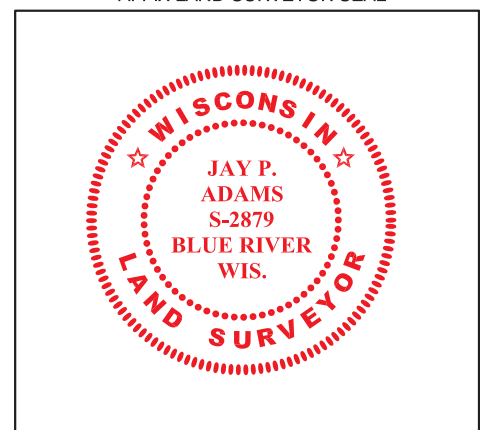


SIGNATURE

13 FEBRUARY 2019

DATE

AFFIX LAND SURVEYOR SEAL



North Lancaster Township

U.S. PUBLIC LAND SURVEY MONUMENT RECORD

CORNER DESCRIPTION: SW CORNER, SECTION 34, T 5 N, R 3W

STATE PLANE COORDINATES: N _____, E _____

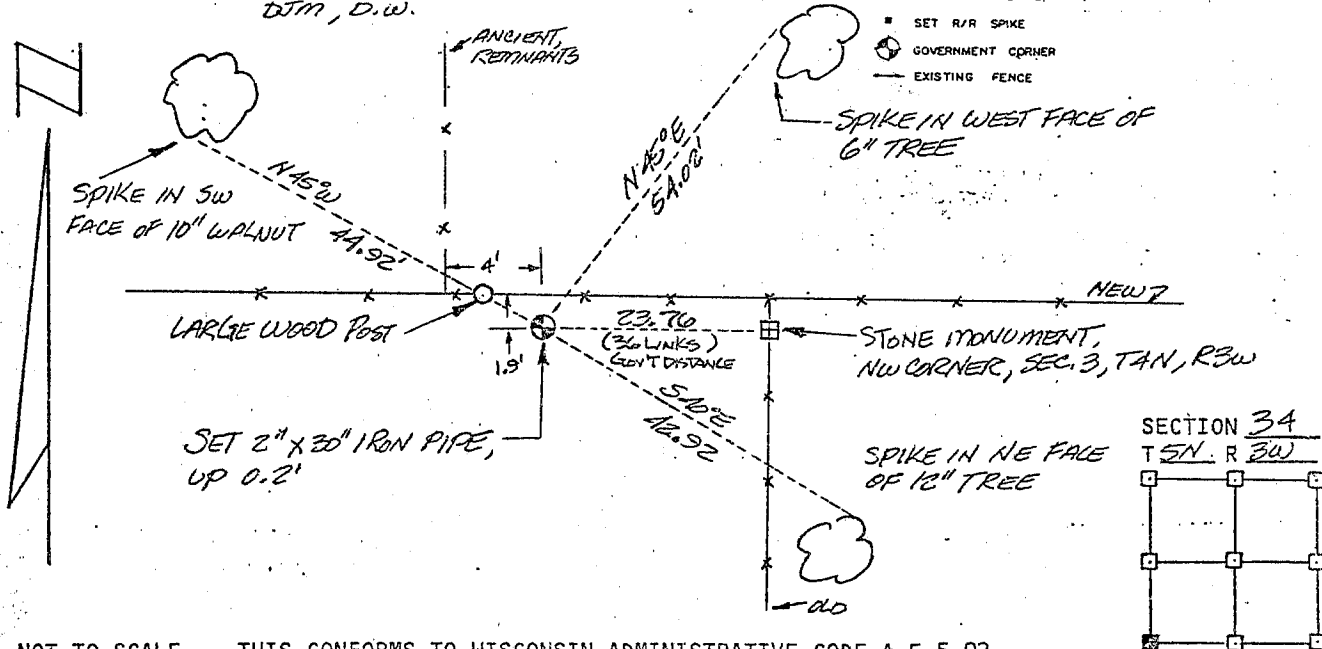
THETA ANGLE: _____

HORIZONTAL DATUM: WISCONSIN STATE PLANE COORDINATE SYSTEM, SOUTH ZONE

EVIDENCE: No Corner Monument of Record. Corner established on the extension of the north line of the NW 1/4 of Sec 3, T 5 N, R 3 W to the west at the government distance.

MONUMENT: FOUND , PLACED
METHOD OF RESTORATION (RE-ESTABLISHMENT):
 ACCEPTED EXISTING MONUMENT (STONE MONUMENT)
 ACCEPTED OCCUPATION
 LOST CORNER PROPORTIONATE METHODS
DATE CORNER SET: 1-29-83
DJM, D.W.

- LEGEND
SET #6 REBAR, 1.13 LBS PER LINEAL FT. MIN. WT.
SET 1" X 24" IRON PIPE, 1.13 LBS PER LINEAL FT. MIN. WT.
SET 2" X 30" IRON PIPE, 3.65 LBS PER LINEAL FT. MIN. WT.
FOUND 1" IRON PIPE
FOUND 2" IRON PIPE
FOUND R/R SPIKE
SET R/R SPIKE
GOVERNMENT CORNER
EXISTING FENCE



NOT TO SCALE THIS CONFORMS TO WISCONSIN ADMINISTRATIVE CODE A-F 5.02

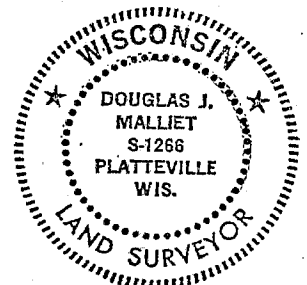
SURVEYOR'S AFFIDAVIT:

STATE OF WISCONSIN)
GRANT COUNTY) SS

I hereby certify that I, Douglas J. Malliet, have complied with the Wisconsin State Statutes, Statutes of the United States, and the rules and regulations made by the Secretary of the Interior in the location of the corner shown above.

DATE OF SURVEY: 1-5-83

Douglas J. Malliet
REGISTERED LAND SURVEYOR
1206



D. F. BURBACH MUNICIPAL & CIVIL ENGINEERS

410 NORTH SECOND STREET • PLATTEVILLE, WISCONSIN 53818 • (608) 348-3262

MAY 24 1983

Handwritten number 1627