

## GRANT COUNTY U.S. PUBLIC LAND SURVEY MONUMENT RECORD

INSTRUCTIONS: THIS RECORD SHALL SHOW THE LOCATION OF THE CORNER AND SHALL INCLUDE ALL OF THE FOLLOWING ELEMENTS (A THROUGH I).

(A) IDENTIFY THE CORNER AS REFERENCED TO THE U.S. PUBLIC LAND SURVEY SYSTEM

■ = CORNER MONUMENT RESTORED

WITNESSES TO CORNER LOCATION:

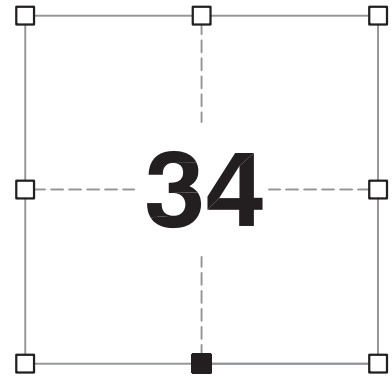
**STEVEN A. ALT**  
**BRADLEY A. SCHROEDER**

GEOGRAPHIC COORDINATES,  
NAD 83 (2011) ADJUSTMENT:

**LATITUDE:** 42° 51' 26.85046"  
**LONGITUDE:** 90° 42' 52.35128"

WISCONSIN COORDINATE REFERENCE SYSTEM (WISCRS),  
GRANT COUNTY, NAD 83 (2011) ADJUSTMENT:

**NORTHING:** 527,110.16  
**EASTING:** 817,915.49



**SECTION 34**  
**TOWNSHIP 5 NORTH, RANGE 3 WEST**  
**TOWN OF NORTH LANCASTER**

(B) DESCRIBE ANY RECORD EVIDENCE, MONUMENT EVIDENCE, OCCUPATIONAL EVIDENCE, TESTIMONIAL EVIDENCE OR ANY OTHER MATERIAL EVIDENCE YOU CONSIDERED, AND WHETHER THE MONUMENT WAS FOUND OR PLACED.

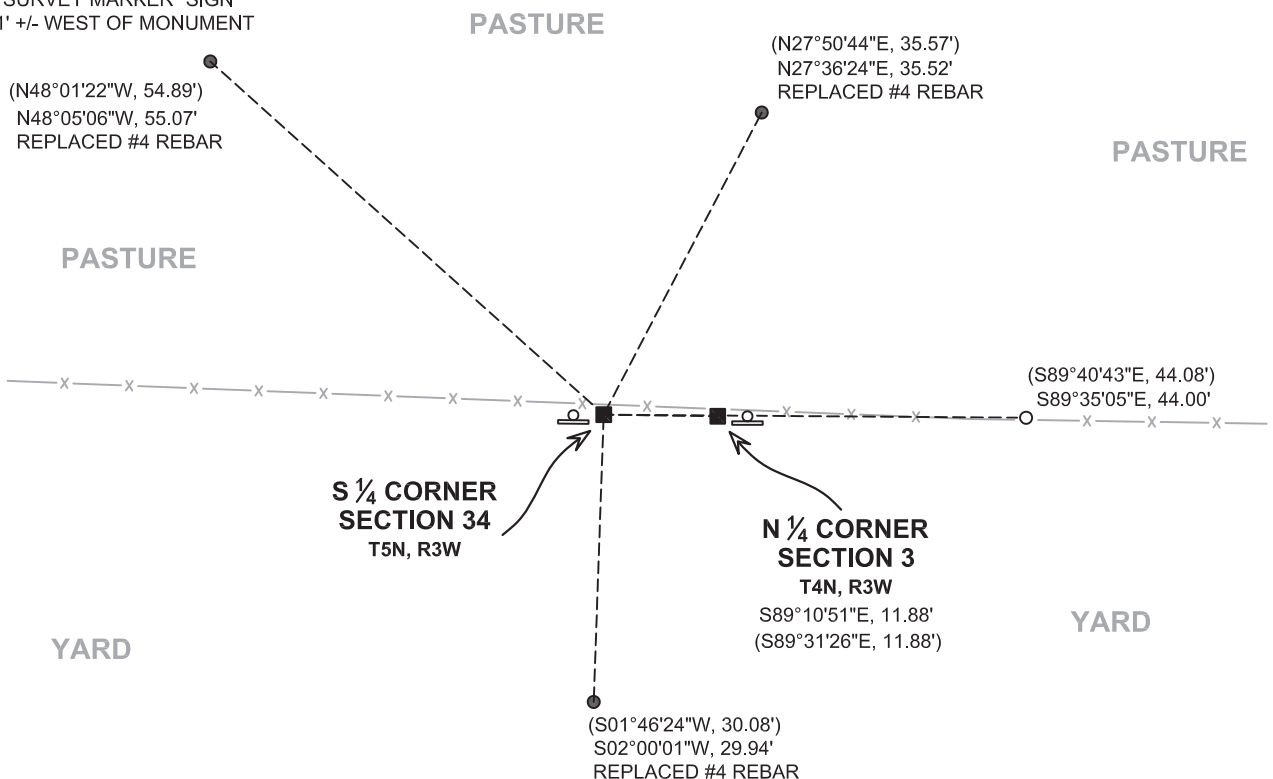
**I COULD FIND NO MONUMENTS OR BEARING TREES FROM THE ORIGINAL GOVERNMENT SURVEY OR THE HISTORIC COUNTY SURVEYOR'S SUBSEQUENT RESURVEYS. I RECOVERED THE 1" x 30" REBAR AND ALUMINUM CAP REFERENCED BY AARON AUSTIN. THE PROPORTIONATE OFFSET METHOD AUSTIN EMPLOYED TO LOCATE THE CORNER FROM THE NORTH QUARTER CORNER OF SECTION 3, T4N, R3W IS ONE THAT WOULD HAVE BEEN HISTORICALLY USED. I ACCEPTED THIS LOCATION AS THE BEST AVAILABLE EVIDENCE OF THE CORNER AND I REMONUMENTED IT WITH A 2" x 30" STAINLESS STEEL PIPE WITH A 4" GRANT COUNTY BRASS CAP.**

(C) IN THE PLAN VIEW DRAWING BELOW, PROVIDE REFERENCE TIES TO AT LEAST 4 WITNESS MONUMENTS. WITNESS MONUMENTS SHALL BE MADE OF CONCRETE, NATURAL STONE, IRON, BEARING TREES OR ANY OTHER EQUALLY DURABLE MATERIAL. DEPICT THE RELEVANT MONUMENTS AND REFERENCE TIES WITH SUFFICIENT DETAIL TO ENABLE ACCURATE RELOCATION OF THE CORNER IF THE CORNER MONUMENT IS DISTURBED.

(D)

**LEGEND:**

- SET 2" x 30" STAINLESS STEEL PIPE  
w/ 4" GRANT COUNTY BRASS CAP
- FOUND 1" IRON PIPE
- 3/4" x 24" IRON ROD  
SET AS ACCESSORY
- "SURVEY MARKER" SIGN  
1' +/- WEST OF MONUMENT



# Remonumentation

- (E) DESCRIBE ANY MATERIAL DISCREPANCY BETWEEN THE LOCATION OF THE CORNER AS RESTORED OR REESTABLISHED AND THE LOCATION OF THAT CORNER AS PREVIOUSLY RESTORED OR REESTABLISHED BY DISTANCE AND DIRECTION. SHOW THE DISCREPANCY ON THE PLAN VIEW DRAWING UNDER (D), ABOVE. SHOW THE DISTANCES BETWEEN THE CORNER AS PREVIOUSLY RESTORED OR REESTABLISHED AND (1) THE CORNER AS RESTORED OR REESTABLISHED, AND (2) TO AT LEAST 2 OF THE WITNESS MONUMENTS SHOWN ON THE DRAWING IN (D) ABOVE.

**IN A PREVIOUS TIE SHEET, DOUGLAS MALLIET PLACED A #3 REBAR AT A PROPORTIONATE LOCATION.**

- (F) WAS THE CORNER RESTORED THROUGH ACCEPTANCE OF (1) AN OBLITERATED EVIDENCE LOCATION, OR (2) A FOUND PERPETUATED LOCATION?

**(2) A FOUND PERPETUATED LOCATION.**

- (G&H) WAS THE CORNER REESTABLISHED THROUGH LOST CORNER PROPORTIONATE METHODS? IF SO, SHOW THE METHOD, INCLUDING THE DIRECTIONS AND DISTANCES TO OTHER PUBLIC LAND SURVEY CORNERS USED AS EVIDENCE OR USED FOR PROPORTIONING IN DETERMINING THE CORNER LOCATION.

**N/A**

#### CORNER HISTORY

**THE ORIGINAL GOVERNMENT CORNER WAS ESTABLISHED BY LUCIUS LYON IN THE SECOND QUARTER OF 1832.**

**VARIOUS HISTORIC COUNTY SURVEYORS VISITED THE CORNER.**

**IN A TIE SHEET DATED 30 JULY 1982 DOUGLAS MALLIET SET A #3 REBAR AT A PROPORTIONATE LOCATION.**

**IN A PLAT OF SURVEY DATED 4 MAY 1983, DOUGLAS MALLIET NOTES A 2" IRON PIPE AT THIS CORNER.**

**VARIOUS SURVEYS SINCE THAT TIME NOTE DIFFERENT MONUMENTS AT VARIOUS LOCATIONS.**

**IN THE MOST RECENT TIE SHEET DATED 15 AUGUST 2013, AARON AUSTIN DID NOT ACCEPT THE LOCATION BY MALLIET AND SET A #8 x 30" REBAR WITH A GRANT COUNTY ALUMINUM CAP AT THE PROPORTIONED OFFSET FROM THE NORTH QUARTER CORNER OF SECTION 3, T4N, R3W.**

- (I) I, JAY P. ADAMS, P.L.S. - 2879, CERTIFY THAT THE CORNER LOCATION SHOWN ON THIS RECORD WAS DETERMINED BY ME OR UNDER MY DIRECTION AND CONTROL AND THAT THIS U.S. PUBLIC LAND SURVEY MONUMENT RECORD IS CORRECT AND COMPLETE TO THE BEST OF MY KNOWLEDGE AND BELIEF.

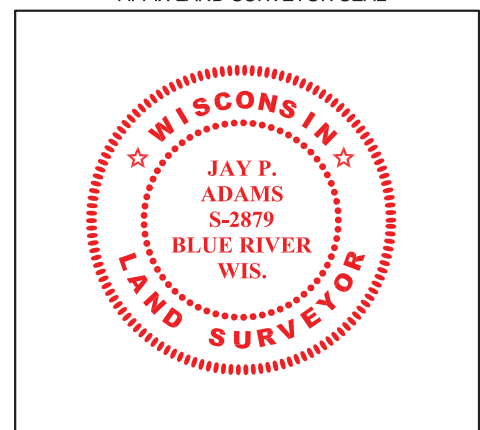


SIGNATURE

**13 FEBRUARY 2019**

DATE

AFFIX LAND SURVEYOR SEAL



# U.S. PUBLIC LAND SURVEY MONUMENT RECORD - GRANT COUNTY, WI

Section 34, Town 5 North Range 3 West, Town of North Lancaster

**CERTIFICATE:**

I, Aaron J. Austin, do hereby certify that the corner location on this record was determined by me and/or under my direct supervision and that this U.S. Public Land Survey Monument Record is correct and complete to the best of my knowledge and belief.

Dated this 15 day of August, 2023.

*Aaron J. Austin*  
 Aaron J. Austin, S-2922



● = CORNER LOCATION

GRANT COUNTY COORDINATES: N=527110.25' E=817915.36'

**HISTORY OF CORNER ESTABLISHMENT:**

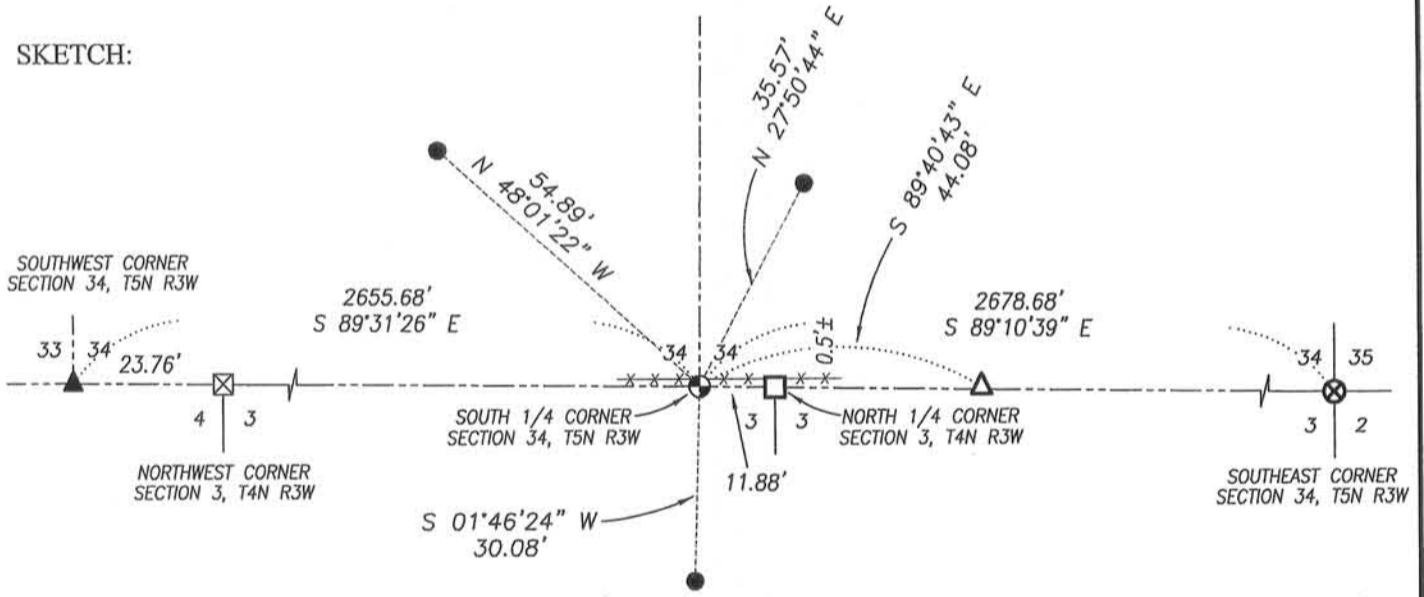
- 1832-Corner originally set by Lucius Lyon.
  - 1847-Struntz found original corner on a survey. (Book B, Page 45).
  - 1892-Sampson found remains of one stump on a survey. (Book D, Page 214).
  - 1906-Appleby shown the corner on a survey. (Book D, Page 312).
  - (Undated)-Homer Ralph Jr. shown this corner on a survey. (Book E, Page 146).
  - 1982-Douglas Malliet prepared a U.S. Public Land Survey Monument Record for this corner.
- Several other more recent surveys show this corner.

**DESCRIPTION OF CORNER EVIDENCE FOUND:**

Several recent surveys show different monuments and different locations for this corner. I did not accept the location of the No. 3 rebar set by Malliet. I reset the corner on the South line of Section 34 at the recorded half offset from a No. 10 rebar marking the North 1/4 corner of Section 3, T4N R3W. Corner location was verified by E.D.M. and G.P.S methods.

**DESCRIPTION OF CORNER AND WITNESS MONUMENTS, references and accessories used to perpetuate the original or re-established location of this corner. Witnesses to corner location Shane Austin.**

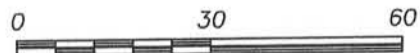
**SKETCH:**



**LEGEND**

- No. 8 x 30" rebar set with Grant County Aluminum Cap
- Number 4 x 24" Rebar set with red plastic "TIE" cap
- ⊠ Stone monument found
- ▲ 1" diameter iron pipe found
- ▲ 2" diameter iron pipe found
- ⊗ No. 6 rebar found with Grant County Aluminum Cap
- No. 10 rebar found
- x-x- Approximate existing fence

Bearings are referenced to the Grant County Coordinate System (2011 adjustment) which was determined by G.P.S. observation.



SCALE 1" = 30'



4211 HWY 81 E, LANCASTER, WI 53813  
 PHONE: 608-723-6363 FAX: 608-723-6702

JOB NO: 11S192-A  
 G:\GRANTDOT\HWY61B  
 H:\TIE\T5NR3W\126

FIELDBOOK: TDSR  
 DRAWN BY: AJ AUSTIN  
 CREW: SW AUSTIN

North Lancaster Township

US. PUBLIC LAND SURVEY MONUMENT RECORD

CORNER DESCRIPTION: SW CORNER, SECTION 34, T 5 N, R 3 W

STATE PLANE COORDINATES: N \_\_\_\_\_, E \_\_\_\_\_

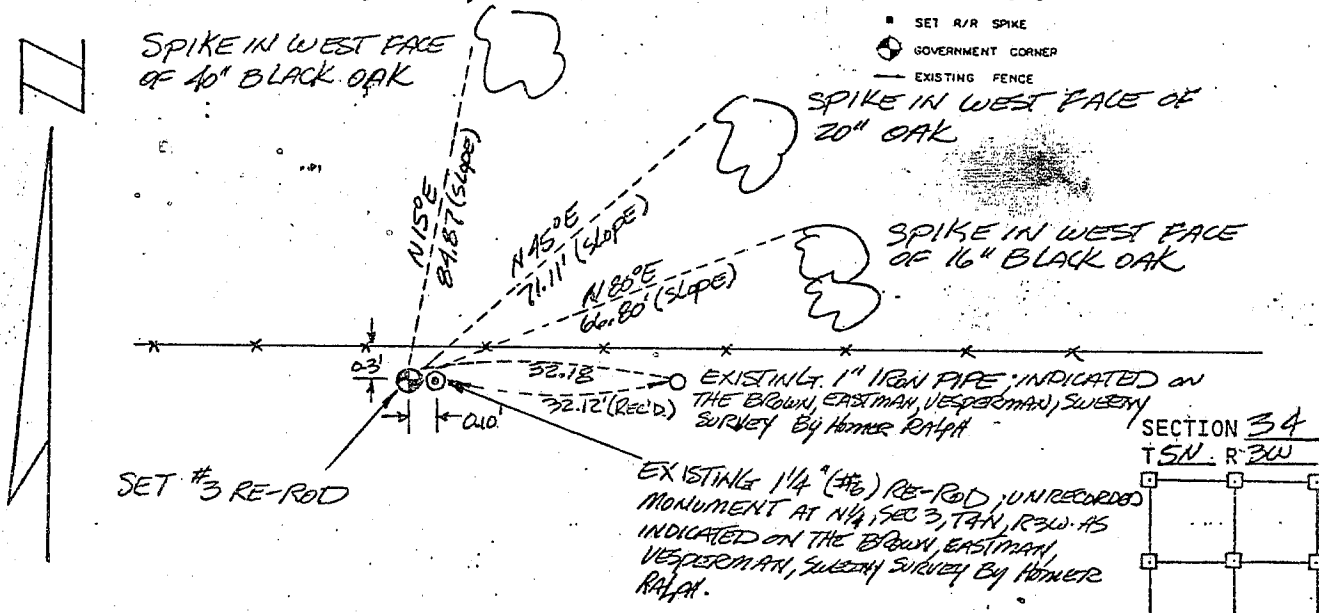
THETA ANGLE: \_\_\_\_\_

HORIZONTAL DATUM: WISCONSIN STATE PLANE COORDINATE SYSTEM, SOUTH ZONE

EVIDENCE: No corner monument or record, used established line in the Brown, Eastman, Vesperman, Sweeney survey and placed at proportional distance.

MONUMENT: FOUND , PLACED   
METHOD OF RESTORATION (RE-ESTABLISHMENT):  
 ACCEPTED EXISTING MONUMENT  
N , E  ACCEPTED OCCUPATION  
N , E  LOST CORNER PROPORTIONATE METHODS  
DATE CORNER SET: 5-3-83; DJM, DW

- LEGEND
- ▲ SET #6 REBAR, 1.13 LBS PER LINEAL FT. MIN. WT.
  - SET 1" X 24" IRON PIPE, 1.13 LBS. PER LINEAL FT. MIN. WT.
  - SET 2" X 30" IRON PIPE, 3.65 LBS. PER LINEAL FT. MIN. WT.
  - FOUND 1" IRON PIPE
  - FOUND .2" IRON PIPE
  - FOUND R/R SPIKE
  - SET R/R SPIKE
  - GOVERNMENT CORNER
  - EXISTING FENCE



NOT TO SCALE THIS CONFORMS TO WISCONSIN ADMINISTRATIVE CODE A-E 5.02

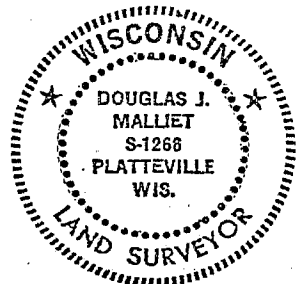
SURVEYOR'S AFFIDAVIT:

STATE OF WISCONSIN) COUNTY) SS  
GRANT

I hereby certify that I, Douglas J. Malliet, have complied with the Wisconsin State Statutes, Statutes of the United States, and the rules and regulations made by the Secretary of the Interior in the location of the corner shown above.

DATE OF SURVEY: 7-30-82

Douglas J. Malliet  
REGISTERED LAND SURVEYOR  
# 1260



D. F. BURBACH MUNICIPAL & CIVIL ENGINEERS

410 NORTH SECOND STREET • PLATTEVILLE, WISCONSIN 53818 • (608) 348-3262

MAY 24 1983

*patch*