

GRANT COUNTY U.S. PUBLIC LAND SURVEY MONUMENT RECORD

INSTRUCTIONS: THIS RECORD SHALL SHOW THE LOCATION OF THE CORNER AND SHALL INCLUDE ALL OF THE FOLLOWING ELEMENTS (A THROUGH I).

(A) IDENTIFY THE CORNER AS REFERENCED TO THE U.S. PUBLIC LAND SURVEY SYSTEM

■ = CORNER MONUMENT RESTORED

WITNESSES TO CORNER LOCATION:

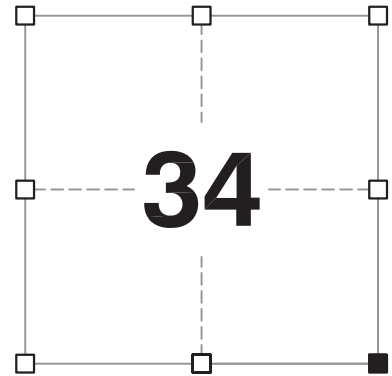
JAY P. ADAMS
PAIGE O. JELINEK

GEOGRAPHIC COORDINATES,
NAD 83 (2011) ADJUSTMENT:

LATITUDE: 42° 51' 26.44386"
LONGITUDE: 90° 42' 16.39387"

WISCONSIN COORDINATE REFERENCE SYSTEM (WISCRS),
GRANT COUNTY, NAD 83 (2011) ADJUSTMENT:

NORTHING: 527,071.87
EASTING: 820,593.86



SECTION 34
TOWNSHIP 5 NORTH, RANGE 3 WEST
CITY OF LANCASTER

(B) DESCRIBE ANY RECORD EVIDENCE, MONUMENT EVIDENCE, OCCUPATIONAL EVIDENCE, TESTIMONIAL EVIDENCE OR ANY OTHER MATERIAL EVIDENCE YOU CONSIDERED, AND WHETHER THE MONUMENT WAS FOUND OR PLACED.

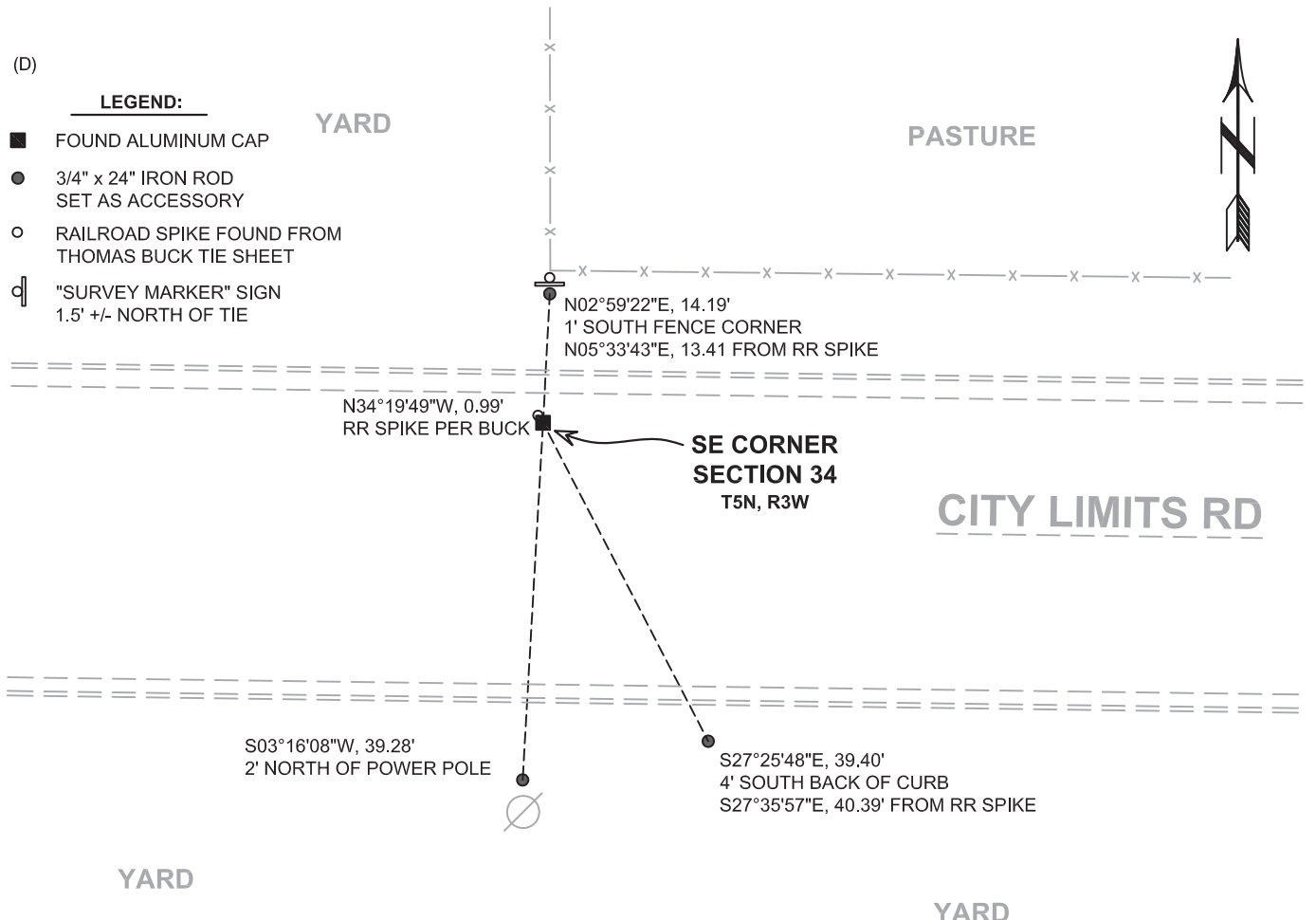
I COULD FIND NO MONUMENTS OR BEARING TREES FROM THE ORIGINAL GOVERNMENT SURVEY. I RECOVERED THE 3/4" REBAR AND ALUMINUM CAP REFERENCED BY RUMMLER AND BOWDEN. I ACCEPTED THIS LOCATION AS THE BEST AVAILABLE EVIDENCE OF THE CORNER AND LEFT IT IN PLACE BECAUSE OF EXCEPTIONAL STABILITY.

(C) IN THE PLAN VIEW DRAWING BELOW, PROVIDE REFERENCE TIES TO AT LEAST 4 WITNESS MONUMENTS. WITNESS MONUMENTS SHALL BE MADE OF CONCRETE, NATURAL STONE, IRON, BEARING TREES OR ANY OTHER EQUALLY DURABLE MATERIAL. DEPICT THE RELEVANT MONUMENTS AND REFERENCE TIES WITH SUFFICIENT DETAIL TO ENABLE ACCURATE RELOCATION OF THE CORNER IF THE CORNER MONUMENT IS DISTURBED.

(D)

LEGEND:

- FOUND ALUMINUM CAP
- 3/4" x 24" IRON ROD SET AS ACCESSORY
- RAILROAD SPIKE FOUND FROM THOMAS BUCK TIE SHEET
- ⊕ "SURVEY MARKER" SIGN 1.5' +/- NORTH OF TIE



Remonumentation

(E) DESCRIBE ANY MATERIAL DISCREPANCY BETWEEN THE LOCATION OF THE CORNER AS RESTORED OR REESTABLISHED AND THE LOCATION OF THAT CORNER AS PREVIOUSLY RESTORED OR REESTABLISHED BY DISTANCE AND DIRECTION. SHOW THE DISCREPANCY ON THE PLAN VIEW DRAWING UNDER (D), ABOVE. SHOW THE DISTANCES BETWEEN THE CORNER AS PREVIOUSLY RESTORED OR REESTABLISHED AND (1) THE CORNER AS RESTORED OR REESTABLISHED, AND (2) TO AT LEAST 2 OF THE WITNESS MONUMENTS SHOWN ON THE DRAWING IN (D) ABOVE.

N/A

(F) WAS THE CORNER RESTORED THROUGH ACCEPTANCE OF (1) AN OBLITERATED EVIDENCE LOCATION, OR (2) A FOUND PERPETUATED LOCATION?

(2) A FOUND PERPETUATED LOCATION.

(G&H) WAS THE CORNER REESTABLISHED THROUGH LOST CORNER PROPORTIONATE METHODS? IF SO, SHOW THE METHOD, INCLUDING THE DIRECTIONS AND DISTANCES TO OTHER PUBLIC LAND SURVEY CORNERS USED AS EVIDENCE OR USED FOR PROPORTIONING IN DETERMINING THE CORNER LOCATION.

N/A

CORNER HISTORY

THE ORIGINAL GOVERNMENT CORNER WAS ESTABLISHED BY LUCIUS LYON IN THE SECOND QUARTER OF 1832.

IN RECENT HISTORY, BRUCE BOWDEN PREPARED A TIE SHEET ON 6 JUNE 1987 WHERE HE ACCEPTED AN ALUMINUM MONUMENT HE FOUND.

IN A TIE SHEET DATED 6 MAY 1999, THOMAS BUCK COULD NOT FIND THE CORNER NOR ANY OF BOWDEN'S TIES. HE RETRACED AREA SURVEYS AND SET A RAILROAD SPIKE AT THE CORNER.

IN A TIE SHEET DATED 26 OCTOBER 1999, TODD RUMMLER FOUND BUCK'S LOCATION TO BE INCORRECT AND SET A 3/4" x 24" REBAR WITH A GRANT COUNTY ALUMINUM CAP AT THE CORNER.

IN A TIE SHEET DATED 13 OCTOBER 2013 BRUCE BOWDEN FOUND THE ALUMINUM CAP REFERENCED BY RUMMLER AND PERPETUATED IT WITH NEW TIES.

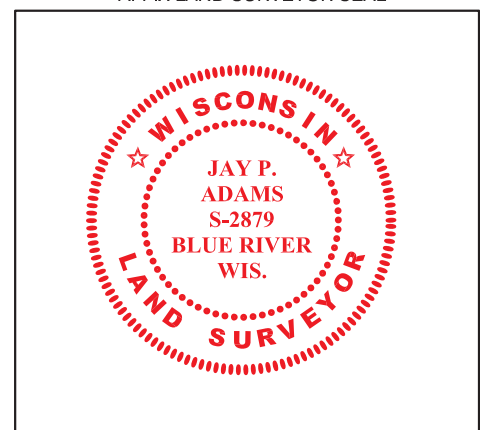
(I) I, JAY P. ADAMS, P.L.S. - 2879, CERTIFY THAT THE CORNER LOCATION SHOWN ON THIS RECORD WAS DETERMINED BY ME OR UNDER MY DIRECTION AND CONTROL AND THAT THIS U.S. PUBLIC LAND SURVEY MONUMENT RECORD IS CORRECT AND COMPLETE TO THE BEST OF MY KNOWLEDGE AND BELIEF.

13 FEBRUARY 2019

SIGNATURE

DATE

AFFIX LAND SURVEYOR SEAL

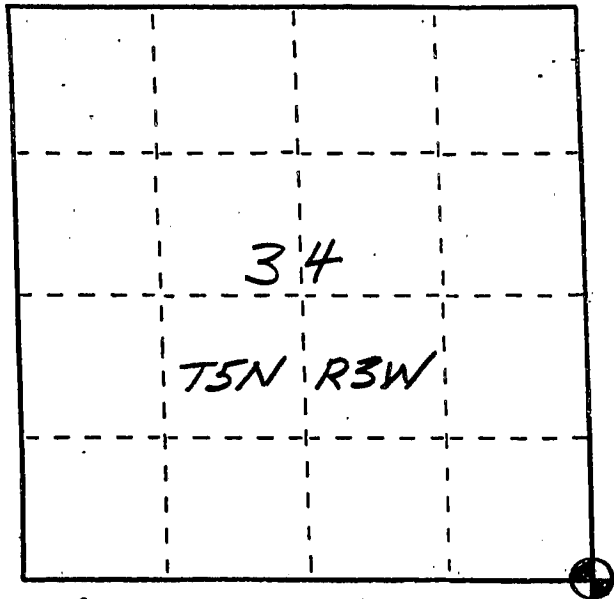


U. S. PUBLIC LAND SURVEY MONUMENT RECORD

INSTRUCTIONS: This record shall show the location of the corner and shall include all of the following nine elements (a through i).

- (a) Identify the corner by reference to the U.S. public land survey system.
- = Corner monument restored.

The Southeast corner of
 Section 34, Town 5 North,
 Range 3 West, City of
 Lancaster, Grant County,
 Wisconsin.



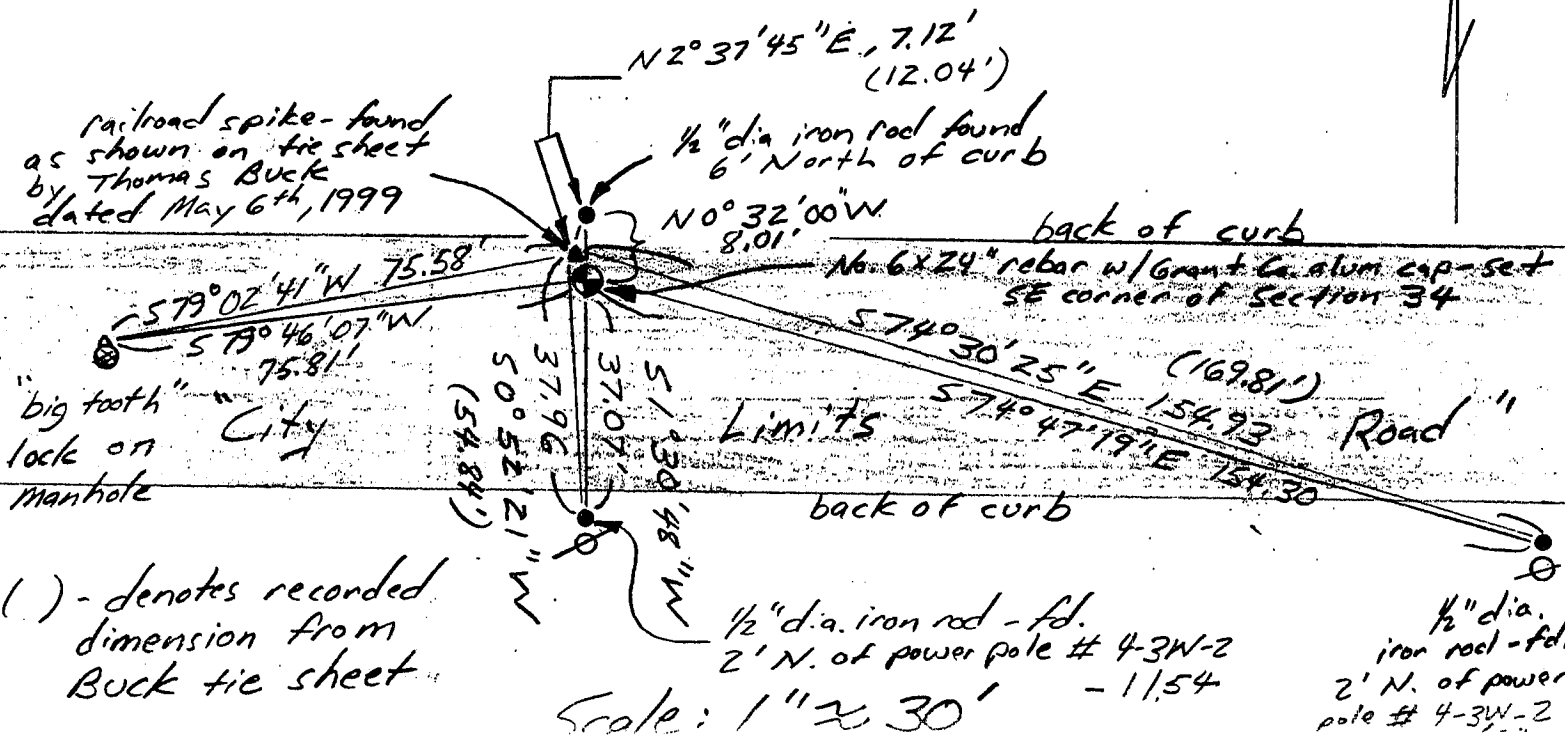
- (b) Describe any record evidence, monument evidence, occupational evidence, testimonial evidence or any other material evidence you considered, and whether the monument was found or placed.

The monument of record for this corner was a Grant County aluminum monument. This is noted on various surveys in the area. This monument was destroyed during recent road construction. Thomas Buck set a railroad spike to remonument this corner in May, 1999. This location, however, does not agree with the location of the aluminum monument as previously determined by Bruce Bowden in several nearby surveys.

- (c) In the plan view drawing below, provide reference ties to at least 4 witness monuments, or, if the location is within a municipality, to at least 2 witness monuments. (Witness monuments shall be made of concrete, natural stone, iron or other equally durable material. Describe witness monuments.)

- (d) Show a plan view drawing depicting the relevant monuments and reference ties which is sufficient in detail to enable accurate relocation of the corner monument if the corner monument is disturbed. Indicate north.

Note: From Grant County monument - set to railroad spike - found is N 24° 04' W, 0.98'



() - denotes recorded dimension from Buck tie sheet

Scale: 1" = 30'

- (e) Describe any material discrepancy between the location of the corner as restored or reestablished and the location of that corner as previously restored or reestablished by distance and direction. Show the discrepancy on the plan view drawing under (d), above. Show the distances between the corner as previously restored or reestablished and (1) the corner as restored or reestablished, and (2) to at least 2 of the witness monuments shown on the drawing in (d), above.

The corner as restored by Thomas Buck is $N 24^{\circ}04'W$, 0.98' from the Grant County aluminum capped rebar that has been set to restore the corner. I have shown the differences between the two monuments and the various ties in the preceding sketch.

- (f) Was the corner restored through acceptance of (1) an obliterated evidence location, or, (2) a found perpetuated location?

2.) A found perpetuated location. The corner was re-set from ties to nearby surveys.

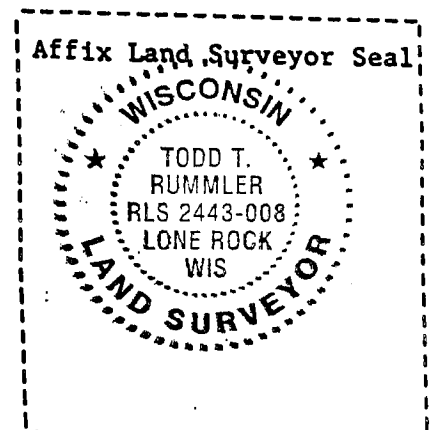
- (g&h) Was the corner reestablished through lost corner proportionate methods? If so, show the method, including the directions and distances to other public land survey corners used as evidence or used for proportioning in determining the corner location?

No.

- (1) I, Todd T. Rummel, R.L.S. - 2443
(type or print name) certify that the corner location shown on this record was determined by me or under my direction and control and that this U.S. Public Land Survey Monument Record is correct and complete to the best of my knowledge and belief.

Todd T. Rummel
Signature

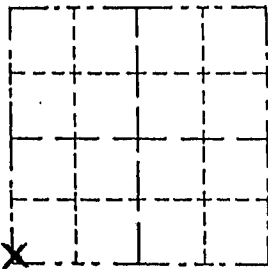
10/26/99
Date



Survey Monument Record

CORNER NO. _____
 SECTION 35
 TOWN 5 NORTH
 RANGE 3 WEST

TYPE OF MONUMENT RAIL ROAD SPIKE
 STATE PLANE COORDINATES: N _____
 E _____
 ELEVATION — M.S.L. DATUM: _____
 THETA ANGLE: _____
 FIELD BOOK: _____
 PAGE _____



LOCATION
 (Indicated by "X")

- FOUND PERPETUATED LOCATION
- OBLITERATED EVIDENCE LOCATION
- LOST CORNER (RESTORED BY PROPORTIONATE METHODS)

BASIS FOR MONUMENT LOCATION

(Use reverse side if necessary)

Show info such as: History of corner, with reference to Vol. and pg., dates, surveyor; exact description of monument replaced; if location computed, by taped or EDM traverse; landowner, remarks, etc.

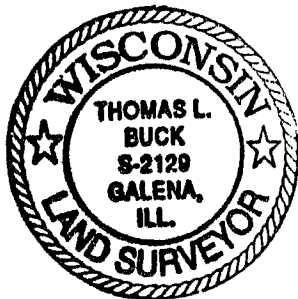
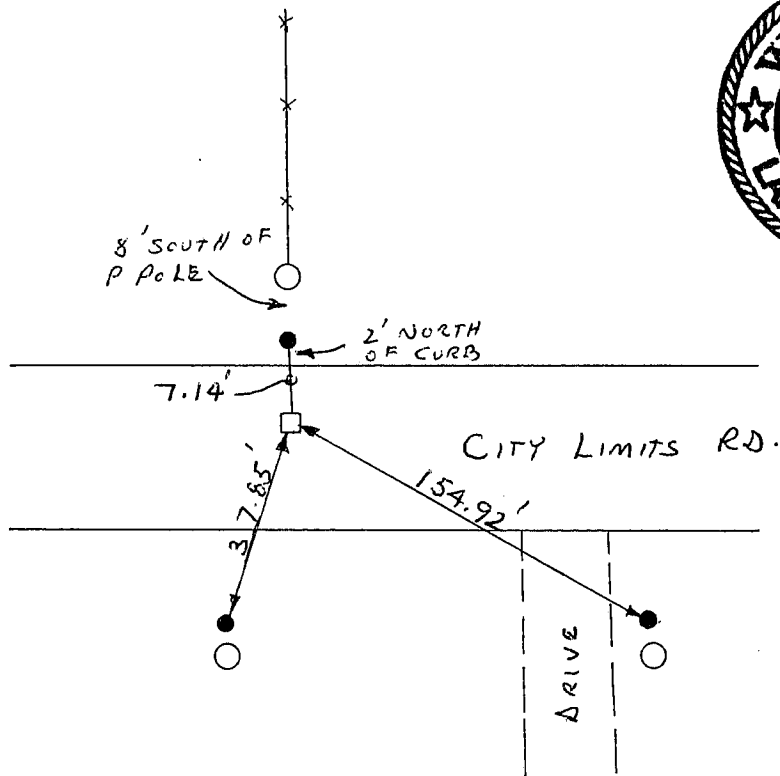
THE LOCATION OF THIS MONUMENT WAS COMPLETELY OBLITERATED. I DIDN'T EVEN FIND ANY TIES. I ASSUME ALL WAS DESTROYED WHEN THE ROAD WAS WIDENED. I TIED INTO LARRY AUSTIN'S SURVEY NEXT TO THE SURVEY I WAS DOING AND BACKED THIS CORNER IN. I ALSO TIED INTO SKY VIEW SUBDIVISION & EVERYTHING CHECKED VERY WELL.

CERTIFIED CORRECT TO THE BEST
 OF MY KNOWLEDGE AND BELIEF

Thomas L. Buck
 Registered Land Surveyor
 DATE: 5/6/99

TIE SKETCH

Show at least three (3) ties and monument



No Scale

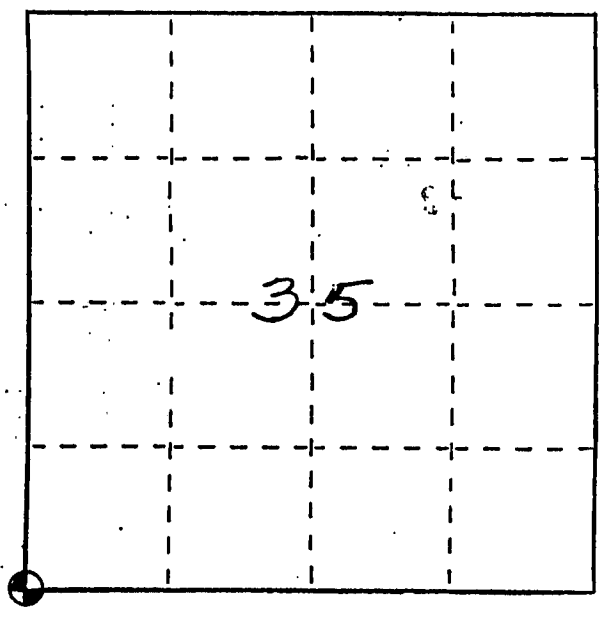
- = POWER POLE
- = 1/2" IRON ROD
- = R.R. SPIKE
- x-x-x = EXISTING FENCE

U. S. PUBLIC LAND SURVEY MONUMENT RECORD

INSTRUCTIONS: This record shall show the location of the corner and shall include all of the following nine elements (a through i).

- (a) Identify the corner by reference to the U.S. public land survey system.
- ⊕ = Corner monument restored.

Southwest corner of Section 35,
 Town 5 North, Range 3 West,
 North Lancaster Township,
 Grant County, Wisconsin.



- (b) Describe any record evidence, monument evidence, occupational evidence, testimonial evidence or any other material evidence you considered, and whether the monument was found or placed.

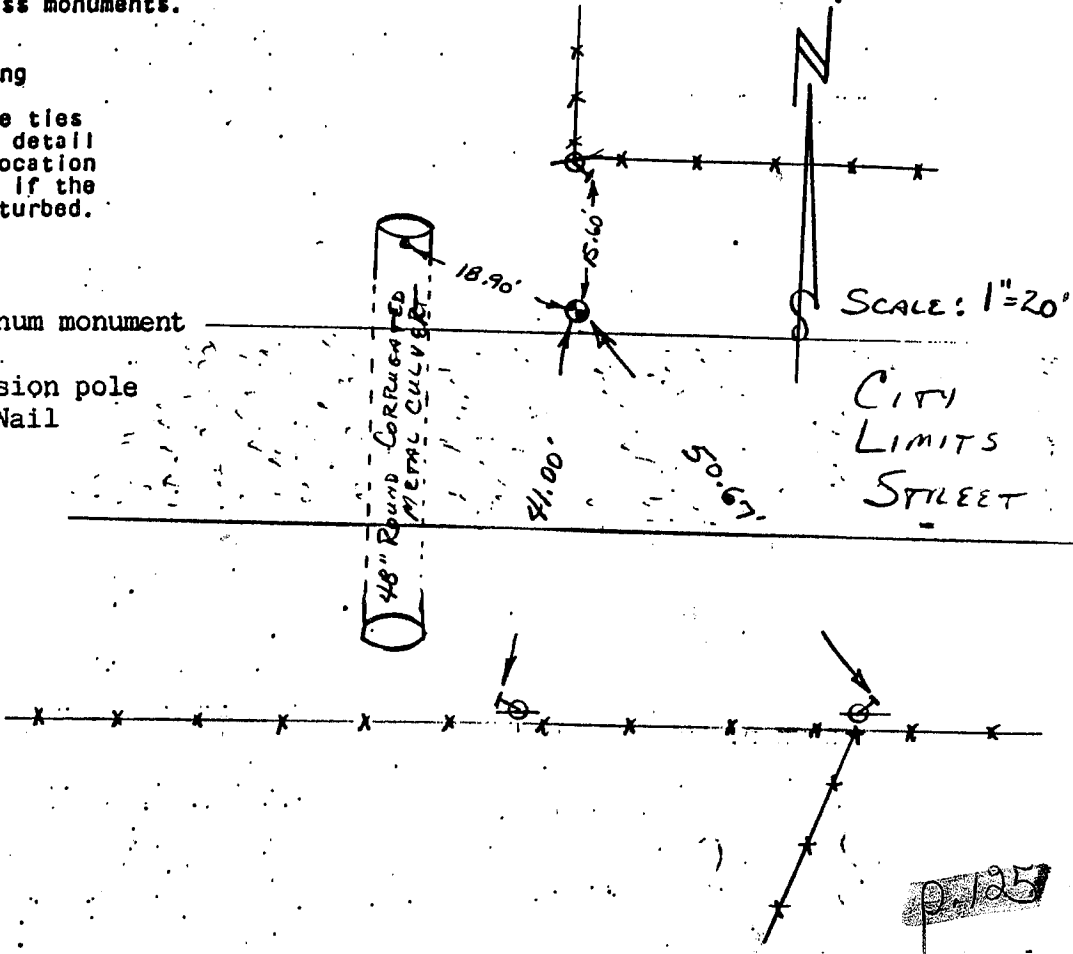
Found an aluminum monument in place but no tie sheet on record. Accepted location of monument after verification by proportionate measurements from an EDM traverse of the area.

- (c) In the plan view drawing below, provide reference ties to at least 4 witness monuments, or, if the location is within a municipality, to at least 2 witness monuments. (Witness monuments shall be made of concrete, natural stone, iron or other equally durable material.) Describe witness monuments.

- (d) Show a plan view drawing depicting the relevant monuments and reference ties which is sufficient in detail to enable accurate relocation of the corner monument if the corner monument is disturbed. Indicate north.

LEGEND

- ⊕ Existing aluminum monument
- ↗ Railroad spike
- ⊖ Power transmission pole
- Parker-Kalon Nail
- *** Fence



RECEIVED
 GRANT COUNTY CLERK

JUN 24 1987

9/25

(e) Describe any material discrepancy between the location of the corner as restored or reestablished and the location of that corner as previously restored or reestablished by distance and direction. Show the discrepancy on the plan view drawing under (d) above. Show the distances between the corner as previously restored or reestablished and (1) the corner as restored or reestablished, and (2) to at least 2 of the witness monuments shown on the drawing in (d), above.

NONE.

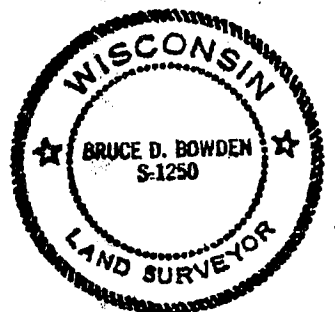
(f) Was the corner restored through acceptance of (1) an obliterated evidence location, or, (2) a found perpetuated location?

(2) A FOUND PERPETUATED LOCATION

(g&h) Was the corner reestablished through lost corner proportionate methods? If so, show the method, including the directions and distances to other public land survey corners used as evidence or used for proportioning in determining the corner location?

NO.

Affix Land Surveyor Seal



(1) I, BRUCE D. BOWDEN, R.L.S. - 1250
(type or print name) certify that the corner location shown on this record was determined by me or under my direction and control and that this U.S. Public Land Survey Monument Record is correct and complete to the best of my knowledge and belief.

Bruce D. Bowden
Signature

June 6, 1987
Date