

U.S. PUBLIC LAND SURVEY MONUMENT RECORD - GRANT COUNTY, WI

Section 36, Town 5 North Range 3 West, Town of North Lancaster

CERTIFICATE:

I, Aaron J. Austin, do hereby certify that the corner location on this record was determined by me and/or under my direct supervision and that this U.S. Public Land Survey Monument Record is correct and complete to the best of my knowledge and belief.

Dated this 28th day of September, 2013.

Aaron J. Austin
 Aaron J. Austin, S-2922



● = CORNER LOCATION

HISTORY OF CORNER ESTABLISHMENT:

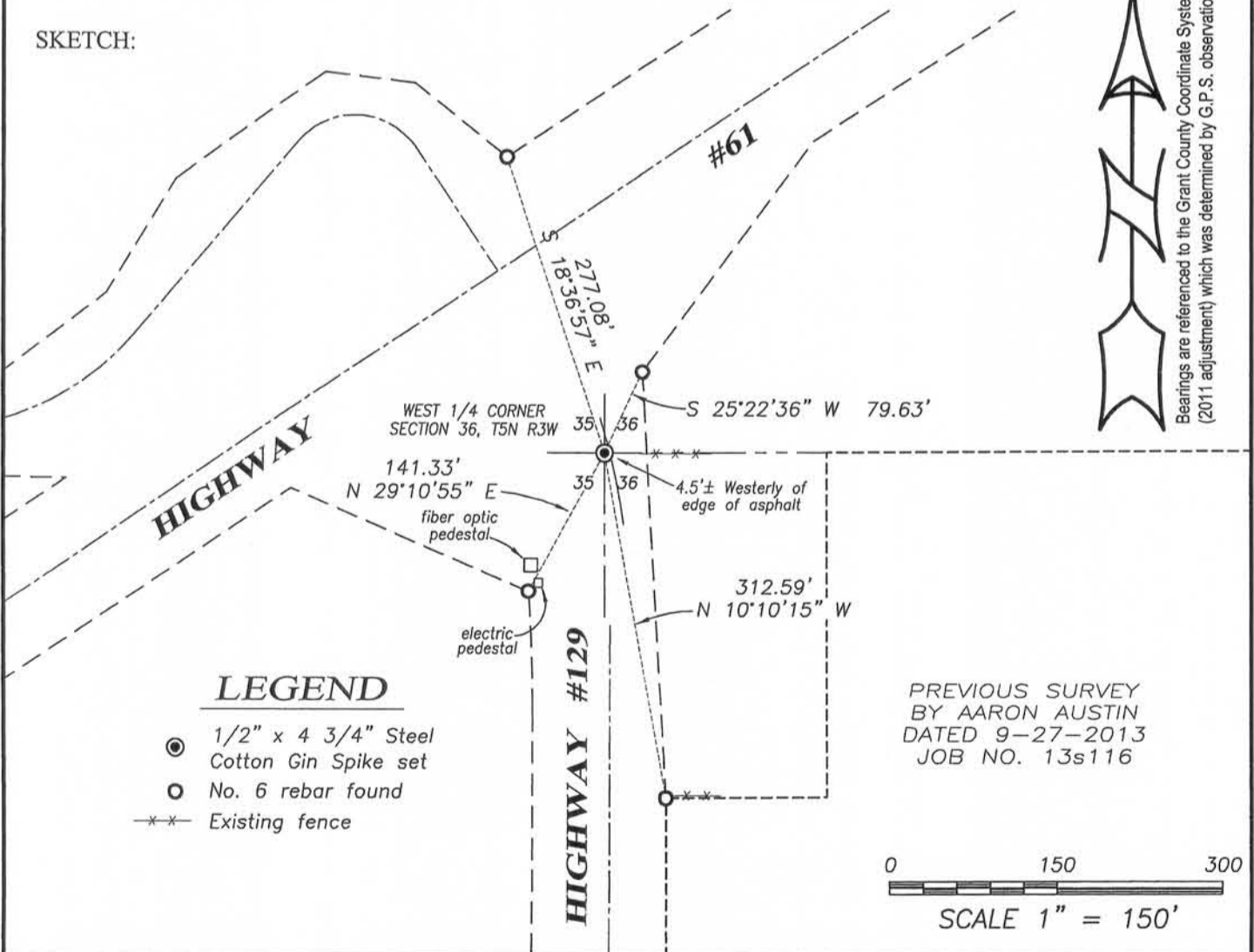
Corner was originally set in 1832 by Harvey Parke.
 In 1982 A U.S. Public Land Survey Monmnet Record was prepared by Douglas Malliet for this corner.

DESCRIPTION OF CORNER EVIDENCE FOUND:

I found and accepted the monument set by Malliet. I measured to this corner prior to reconstruction of the intersection. I reset the corner based upon previous coordinates and verified it's location by G.P.S. methods.

DESCRIPTION OF CORNER AND WITNESS MONUMENTS, references and accessories used to perpetuate the original or re-established location of this corner. Witnesses to corner location Shane Austin.

SKETCH:



4211 HWY 81 E, LANCASTER, WI 53813
 PHONE: 608-723-6363 FAX: 608-723-6702

JOB NO: 13s116
 G:\13s113
 H:\TIE\T5NR3W\119

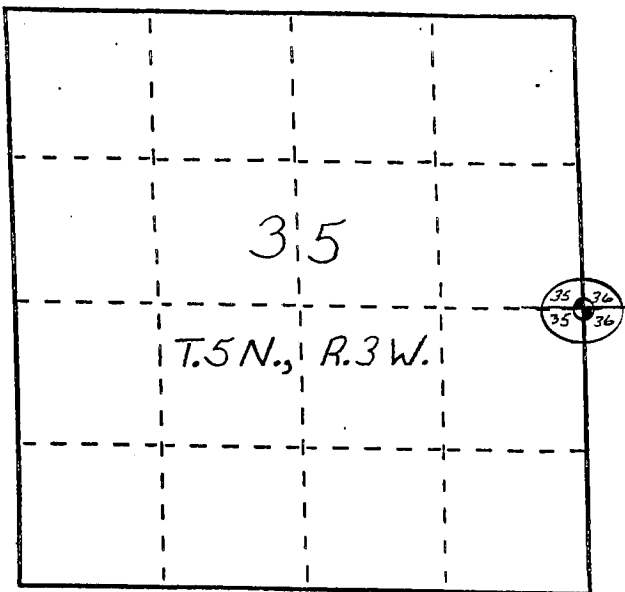
FIELDBOOK: TDSR
 DRAWN BY: AJ AUSTIN
 CREW: SW AUSTIN

U. S. PUBLIC LAND SURVEY MONUMENT RECORD

INSTRUCTIONS: This record shall show the location of the corner and shall include all of the following nine elements (a through i).

- (a) Identify the corner by reference to the U.S. public land survey system.
- = Corner monument restored.

The East Quarter Corner
 of Section 35, Town 5 North,
 Range 3 West, North Lancaster
 Township, Grant County,
 Wisconsin.

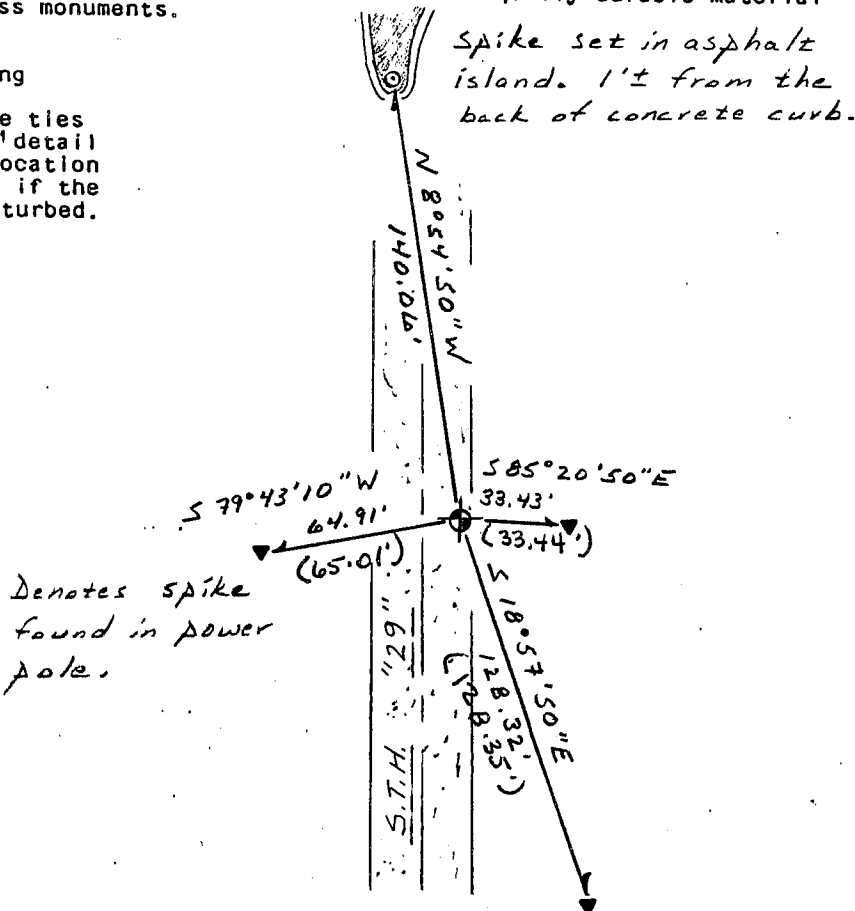


- (b) Describe any record evidence, monument evidence, occupational evidence, testimonial evidence or any other material evidence you considered, and whether the monument was found or placed.

The 3/4" dia. x 6" long square rod noted by Douglas J. Malliet on a tie sheet dated April 14, 1982 has been removed by road construction. I set a railroad spike from remaining ties noted by Malliet.

- (c) In the plan view drawing below, provide reference ties to at least 4 witness monuments, or, if the location is within a municipality, to at least 2 witness monuments. (Witness monuments shall be made of concrete, natural stone, iron or other equally durable material. Describe witness monuments.)

- (d) Show a plan view drawing depicting the relevant monuments and reference ties which is sufficient in detail to enable accurate relocation of the corner monument if the corner monument is disturbed. Indicate north.



SCALE: 1" = 60'

(e) Describe any material discrepancy between the location of the corner as restored or reestablished and the location of that corner as previously restored or reestablished by distance and direction. Show the discrepancy on the plan view drawing under (d), above. Show the distances between the corner as previously restored or reestablished and (1) the corner as restored or reestablished, and (2) to at least 2 of the witness monuments shown on the drawing in (d), above.

None.

(f) Was the corner restored through acceptance of (1) an obliterated evidence location, or, (2) a found perpetuated location?

A found perpetuated location.

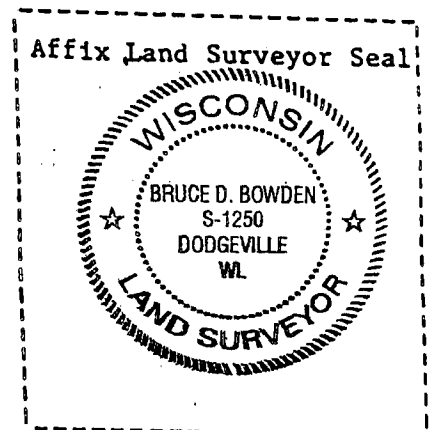
(g&h) Was the corner reestablished through lost corner proportionate methods? If so, show the method, including the directions and distances to other public land survey corners used as evidence or used for proportioning in determining the corner location?

No.

(1) I, Bruce D. Bowden
(type or print name) certify that the corner location shown on this record was determined by me or under my direction and control and that this U.S. Public Land Survey Monument Record is correct and complete to the best of my knowledge and belief.

Bruce D. Bowden
Signature

April 1, 2004
Date



North Lancaster Township

US. PUB'IC LAND SURVEY MONUMENT RECORD

CORNER DESCRIPTION: E 1/4 CORNER, SECTION 35, T 5 N, R 3 W

STATE PLANE COORDINATES: N _____, E _____

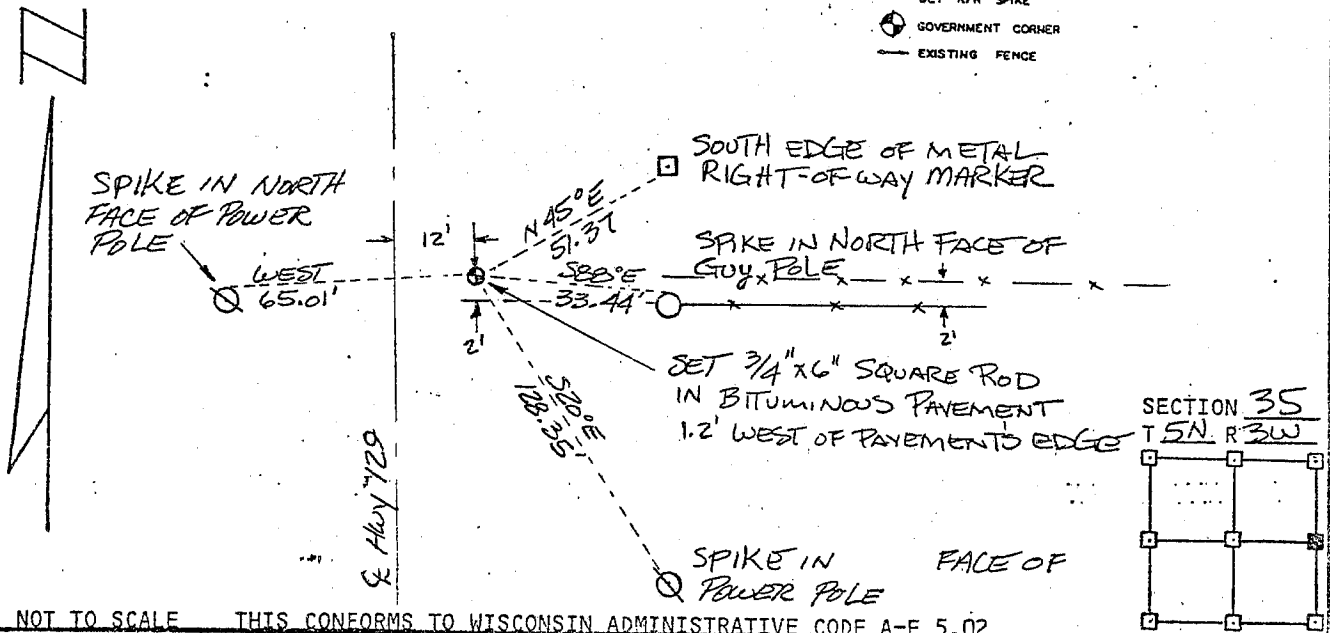
THETA ANGLE: _____

HORIZONTAL DATUM: WISCONSIN STATE PLANE COORDINATE SYSTEM, SOUTH ZONE

EVIDENCE: USED ANCIENT FENCE, 2' N. OF NEWER FENCE FOR NORTHING & MEASURED BACK TO WEST THE RECORD DISTANCE OF 200.00' FROM PREVIOUSLY ESTABLISHED CORNER

MONUMENT: FOUND , PLACED
 METHOD OF RESTORATION (RE-ESTABLISHMENT):
 ACCEPTED EXISTING MONUMENT
 N , E ACCEPTED OCCUPATION
 N , E LOST CORNER PROPORTIONATE METHODS
 DATE CORNER SET: 4-18-82
KED, DJM

- LEGEND
- ▲ SET #6 REBAR, 1.13 LBS PER LINEAL FT. MIN. WT.
 - SET 1" X 24" IRON PIPE, 1.13 LBS. PER LINEAL FT. MIN. WT.
 - SET 2" X 30" IRON PIPE, 3.65 LBS. PER LINEAL FT. MIN. WT.
 - FOUND 1" IRON PIPE
 - FOUND 2" IRON PIPE
 - FOUND R/R SPIKE
 - SET R/R SPIKE
 - ⊙ GOVERNMENT CORNER
 - EXISTING FENCE

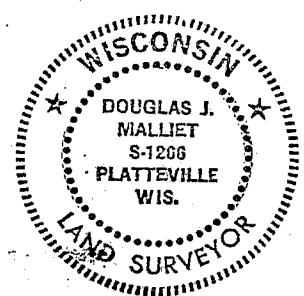


NOT TO SCALE THIS CONFORMS TO WISCONSIN ADMINISTRATIVE CODE A-E 5.02

SURVEYOR'S AFFIDAVIT:
 STATE OF WISCONSIN)
GRANT COUNTY) SS

I hereby certify that I, DOUGLAS J. MALLIET, have complied with the Wisconsin State Statutes, Statutes of the United States, and the rules and regulations made by the Secretary of the Interior in the location of the corner shown above.

DATE OF SURVEY: 4-18-82 Douglas J. Malliet
 REGISTERED LAND SURVEYOR
 # 9266



D. F. BURBACH MUNICIPAL & CIVIL ENGINEERS

410 NORTH SECOND STREET • PLATTEVILLE, WISCONSIN 53818 • (608) 348-3262

MAY 24 1988

2-119