

U.S. PUBLIC LAND SURVEY MONUMENT RECORD - GRANT COUNTY, WI

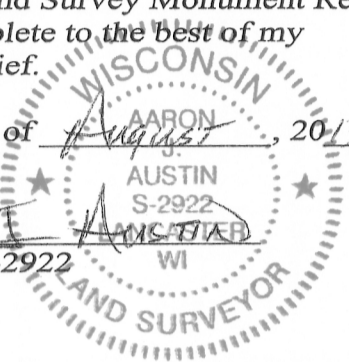
Section 36, Town 5 North Range 3 West, Town of North Lancaster

CERTIFICATE:

I, Aaron J. Austin, do hereby certify that the corner location on this record was determined by me and/or under my direct supervision and that this U.S. Public Land Survey Monument Record is correct and complete to the best of my knowledge and belief.

Dated this 15 day of August, 2013.

Aaron J. Austin
 Aaron J. Austin, S-2922



● = CORNER LOCATION

GRANT COUNTY COORDINATES: N=529658.57' E=828538.56'

HISTORY OF CORNER ESTABLISHMENT:

Corner was not set with original survey.

1842-Freeman set post and tied bearing trees to the center on a survey. (Book A, Page 89).

1844-Wiltse tied bearing trees to the center on a survey. (Book A, Page 232).

1917-Corner was shown on R.O.W. & Track Map, Chicago and North-Western Railway Lancaster Jct. to Lancaster.

1941-Corner was shown on Plat of Right of Way Division Job No. 9577.

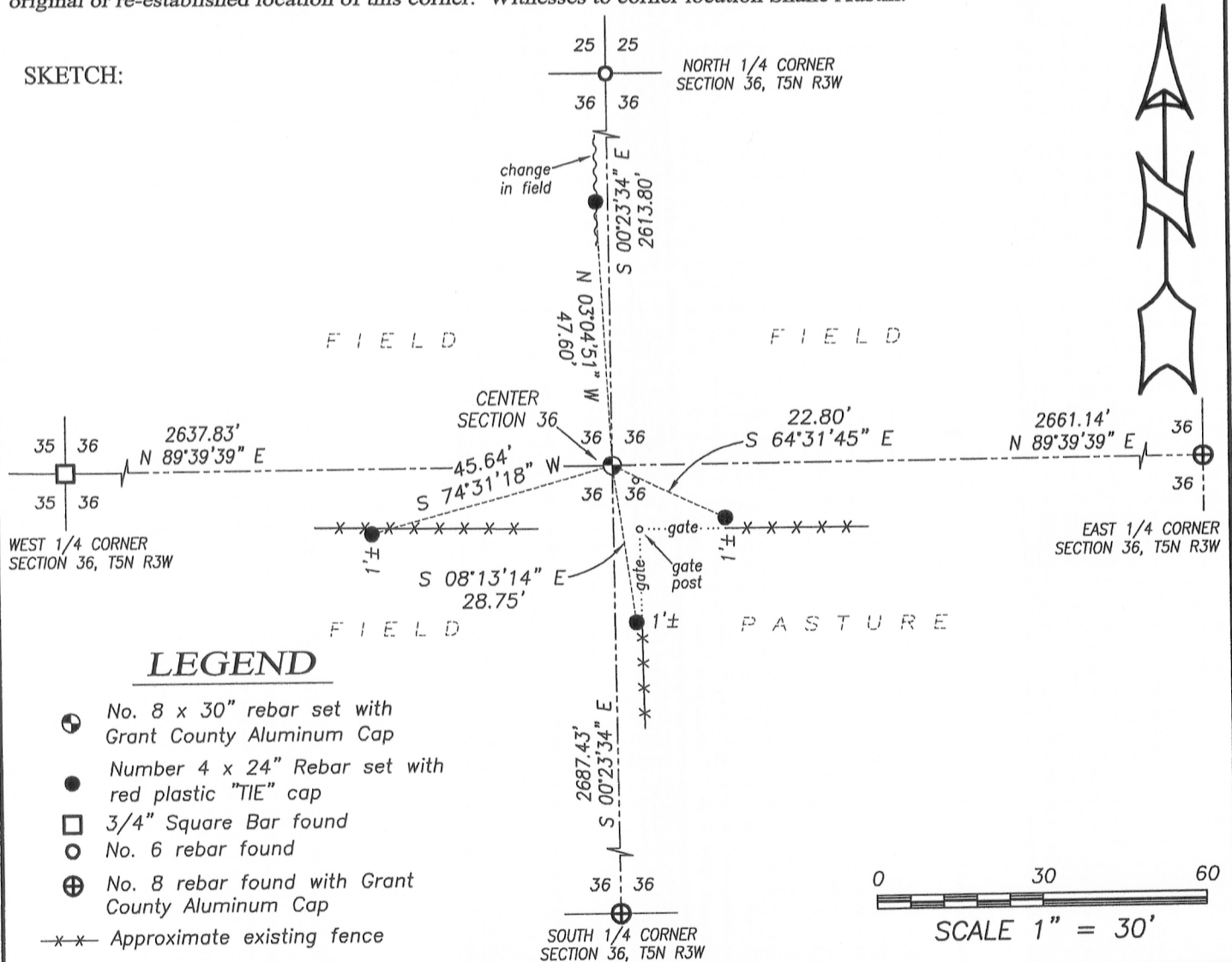
No other record of this corner was found.

DESCRIPTION OF CORNER EVIDENCE FOUND:

No bearing trees were recovered from Freeman or Wiltse Survey. Corner was set at the intersection of the East-West 1/4 and the North-South 1/4 lines. Corner location was verified by E.D.M. and G.P.S methods.

DESCRIPTION OF CORNER AND WITNESS MONUMENTS, references and accessories used to perpetuate the original or re-established location of this corner. Witnesses to corner location Shane Austin.

SKETCH:



LEGEND

- No. 8 x 30" rebar set with Grant County Aluminum Cap
- Number 4 x 24" Rebar set with red plastic "TIE" cap
- 3/4" Square Bar found
- No. 6 rebar found
- ⊕ No. 8 rebar found with Grant County Aluminum Cap
- x-x- Approximate existing fence



4211 HWY 81 E, LANCASTER, WI 53813
 PHONE: 608-723-6363 FAX: 608-723-6702

JOB NO: 11S192-A
 G:\GRANTDOT\HWY61B
 H:\TIE\T5NR3W\119.5

FIELDBOOK: TDSR
 DRAWN BY: AJ AUSTIN
 CREW: SW AUSTIN

119.5

AUG 15 2013