

53118

U.S. PUBLIC LAND SURVEY MONUMENT RECORD - GRANT COUNTY, WI

Section 34, Town 5 North Range 3 West, Town of North Lancaster (a)

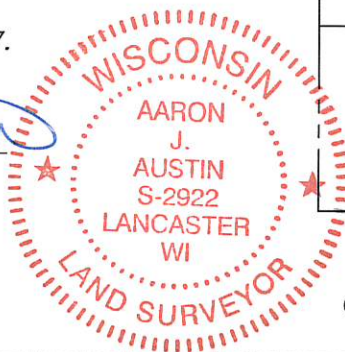
NOTE: This form is intended and designed to fulfill all requirements of the Wisconsin Administrative Code Chapter A-E 7.08, U.S. Public Land Survey Monument Record (3) (a) (b) (c) (d) (e) (f) (g) (h) (i).

CERTIFICATE: (i)

I, Aaron J. Austin, Wisconsin Professional Land Surveyor, do hereby certify that the corner location on this record was determined by me and/or under my direct supervision and that this U.S. Public Land Survey Monument Record is correct and complete to the best of my knowledge and belief.

Dated this 12th day of October, 2017.

Aaron J. Austin
Aaron J. Austin, S-2922



⊕ = CORNER LOCATION

HISTORY OF CORNER ESTABLISHMENT:

Original corner was set in 1832 by Harvey Parke.
In 3/5/1983 Douglas Malliet found the corner and prepared a Survey Monument Record.
In 12/29/93 Larry Austin found the corner and prepared a Survey Monument Record.

DESCRIPTION OF CORNER EVIDENCE FOUND: (b) (f) (g) (h)

I found the Pipe that was set by Parke and set four new witness monuments. I verified the corner's location with G.P.S. and E.D.M. methods

DESCRIPTION OF CORNER AND WITNESS MONUMENTS, references and accessories used to perpetuate the original or re-established location of this corner. (c) (d) (e)

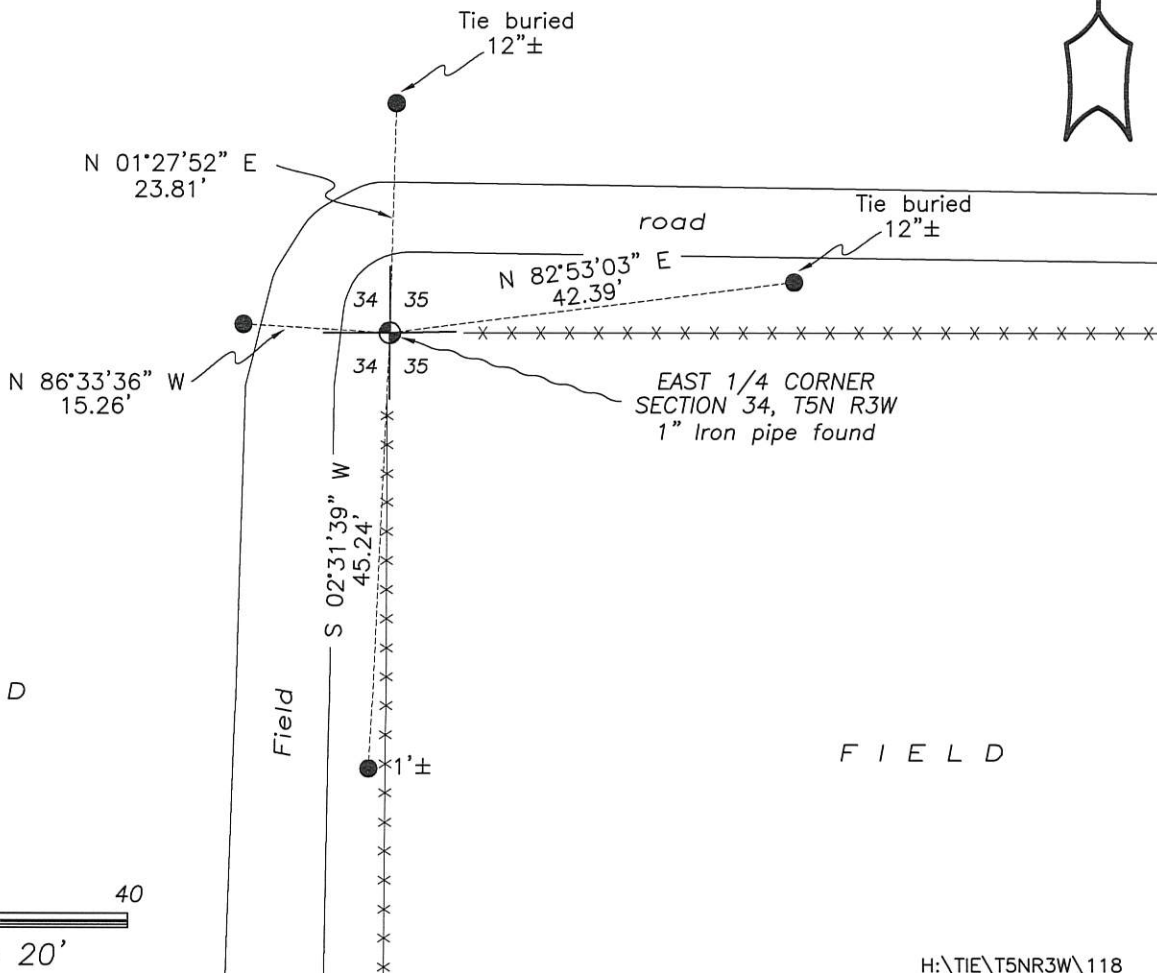
Witnesses to corner location Shane Austin. Drawn by Owen Austin.

SKETCH:

LEGEND

- ⊕ Section Corner—as designated
- 3/4" x 18" rebar set

F I E L D



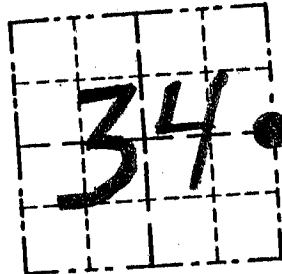
SCALE 1" = 20'

GRANT COUNTY

Survey Monument Record

CORNER NO. 118
 SECTION 34
 TOWN 5 N
 RANGE 3 W

TYPE OF MONUMENT 1" IRON PIPE FOUND
 STATE PLANE COORDINATES: N _____
 E _____
 ELEVATION — M.S.L. DATUM: _____
 THETA ANGLE: _____
 FIELD BOOK: 92-14
 PAGE 6



LOCATION
 (Indicated by "●")

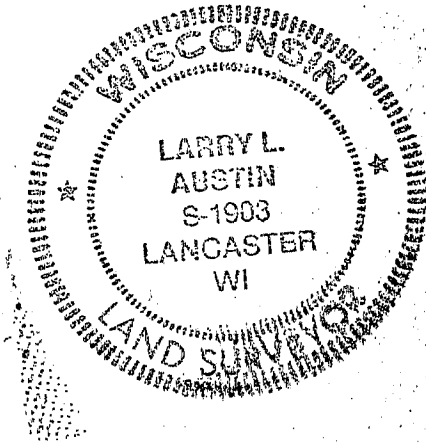
BASIS FOR MONUMENT LOCATION

(Use reverse side if necessary)

Show info such as: History of corner, with reference to Vol. and pg., dates, surveyor; exact description of monument replaced; if location computed, by taped or EDM traverse; landowner, remarks, etc.

FOUND AN 1" IRON PIPE AT OCCUPIED LOCATION; THIS MONUMENT HAS BEEN USED FOR SURVEYS IN THE AREA. I ACCEPTED ITS LOCATION; VERIFIED BY EDM TRAVERSE

SEAL:



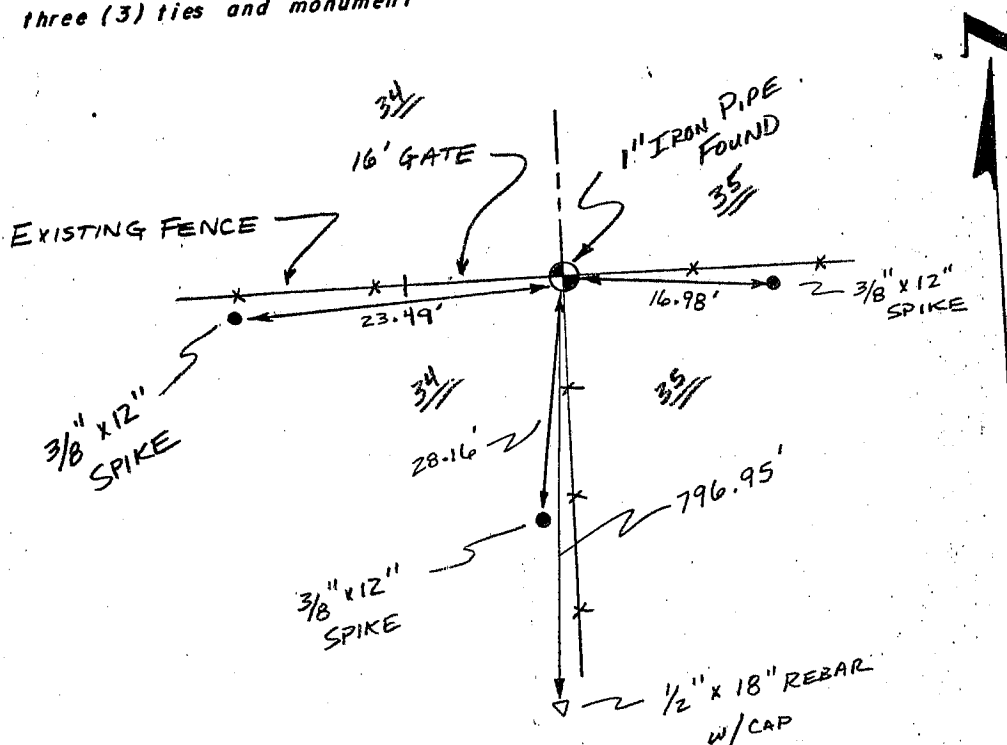
CERTIFIED CORRECT

Larry L. Austin
 Registered Land Surveyor

DATE: 12/29/93

TIE SKETCH

Show at least three (3) ties and monument



NO SCALE

P 118

North Lancaster Township

US. PUBLIC LAND SURVEY MONUMENT RECORD

CORNER DESCRIPTION: W 1/4 CORNER, SECTION 35, T 5 N, R 3 W

STATE PLANE COORDINATES: N _____, E _____

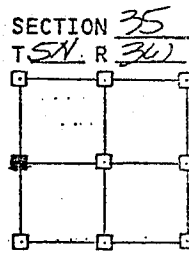
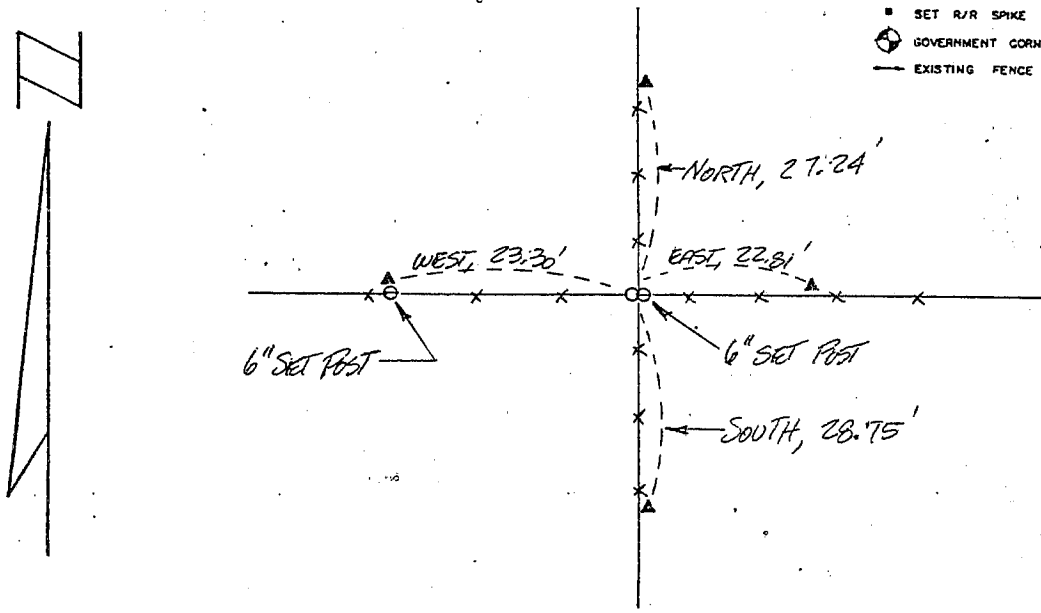
THETA ANGLE: _____

HORIZONTAL DATUM: WISCONSIN STATE PLANE COORDINATE SYSTEM, SOUTH ZONE

EVIDENCE: FOUND PIPE IN GOOD CONDITION AT FENCE INTERSECTION, OF GOOD FENCES EAST WEST, NORTH & SOUTH.

MONUMENT: FOUND , PLACED
METHOD OF RESTORATION (RE-ESTABLISHMENT):
 ACCEPTED EXISTING MONUMENT
N , E ACCEPTED OCCUPATION
N , E LOST CORNER PROPORTIONATE METHODS
DATE CORNER SET: 2-25-83

- LEGEND
- ▲ SET #6 REBAR, 1.13 LBS PER LINEAL FT. MIN. WT.
 - SET 1" X 24" IRON PIPE, 1.13 LBS PER LINEAL FT. MIN. WT.
 - SET 2" X 30" IRON PIPE, 3.65 LBS. PER LINEAL FT. MIN. WT.
 - FOUND 1" IRON PIPE
 - FOUND 2" IRON PIPE
 - FOUND R/R SPIKE
 - SET R/R SPIKE
 - ◊ GOVERNMENT CORNER
 - EXISTING FENCE



NOT TO SCALE THIS CONFORMS TO WISCONSIN ADMINISTRATIVE CODE A-E 5.02

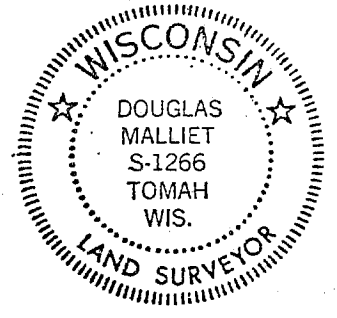
SURVEYOR'S AFFIDAVIT:

STATE OF WISCONSIN)
GRANT COUNTY) SS

I hereby certify that I, Douglas J. Malliet, have complied with the Wisconsin State Statutes, Statutes of the United States, and the rules and regulations made by the Secretary of the Interior in the location of the corner shown above.

DATE OF SURVEY: 3-5-83

Douglas J. Malliet
REGISTERED LAND SURVEYOR
1266



D. F. BURBACH MUNICIPAL & CIVIL ENGINEERS

410 NORTH SECOND STREET • PLATTEVILLE, WISCONSIN 53818 • (608) 348-3262

MAY 2 1983

P. J. B.