

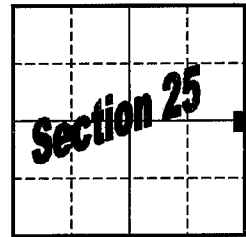
GRANT COUNTY

U.S. PUBLIC LAND SURVEY MONUMENT RECORD

East 1/4 Corner of Section 25
T 5 N, R 3 W, Town of North Lancaster

Type of monument: $\frac{3}{4}$ " Iron Bar with Grant County Aluminum Cap

Location indicated on sketch - ■



T 5 N, R 3 W

Describe and record evidence, monument evidence, occupational evidence, testimonial evidence or any other material evidence you considered, and whether the monument was found or placed.

Established corner by single proportionate measurement and on line between the Northeast and Southeast corners of Section 25.

Corner as established on line agrees with occupation and previous survey work by K.A.Kerst.

Found remains of occupation running East. However, the remnants found were too sparse and scattered to be used in determining any occupied location for the offset corner in Section 30. Also found sparse and scattered remains running West. The remains running West most likely being no more than a field fence. Looking through old plat books in the register of deeds office indicated that East-West one-quarter line of Section 25 has not been an occupied property division since at least 1917.

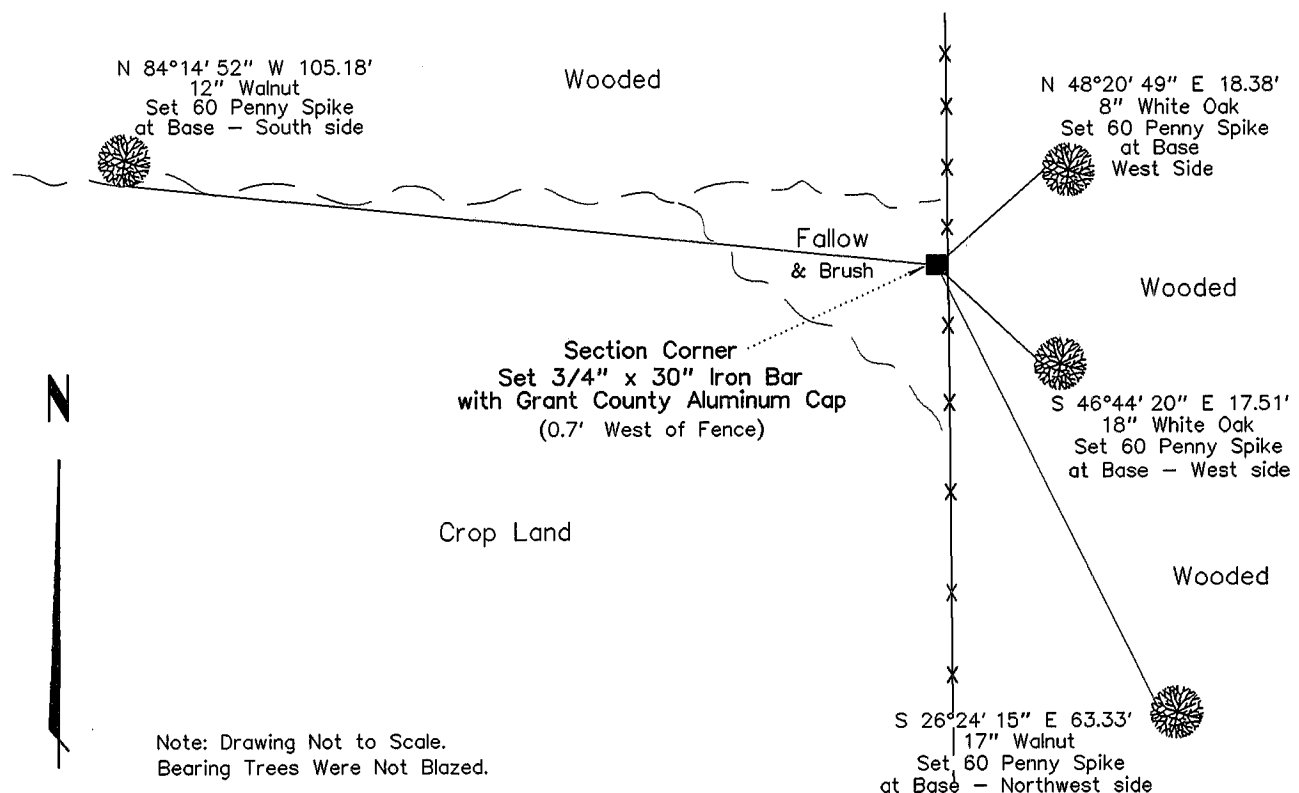
Conflicting evidence resulted from attempts to utilize the occupied South line of the NW $\frac{1}{4}$ of the NW $\frac{1}{4}$ of Section 30 or the occupied South line of the South $\frac{1}{4}$ of the SE $\frac{1}{4}$ of the NE $\frac{1}{4}$ of Section 25 in re-establishing North-South location.

Examined occupation along the East-West one-quarter line of Section 30, and determined that after accounting for original offset distance a corner location as re-established from said occupation would agree with a corner location by single proportion within approximately 7 feet North and South. This was considered a reasonable agreement, as said occupation ends approximately 1885 feet East of the corner area.

After examining the evidence above it was determined that the corner should be re-established by lost corner methods – single proportionate measurement.

Grant County Coordinates (survey feet): N=534957.020 E=831144.837

Show a plan view drawing depicting the relevant monuments, providing reference ties to at least four witness monuments. Describe witness monuments. Show relationship to occupation.



Note: Drawing Not to Scale.
 Bearing Trees Were Not Blazed.

