

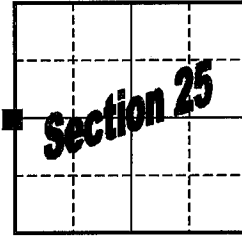
GRANT COUNTY

U.S. PUBLIC LAND SURVEY MONUMENT RECORD

West 1/4 Corner of Section 25
T 5 N, R 3 W, Town of North Lancaster

Type of monument: 3/4" Iron Bar with Grant County Aluminum Cap

Location indicated on sketch - ■



T 5 N, R 3 W

Describe and record evidence, monument evidence, occupational evidence, testimonial evidence or any other material evidence you considered, and whether the monument was found or placed.

Re-established corner by single proportionate measurement and on line between the Northwest and Southwest corners of Section 25.

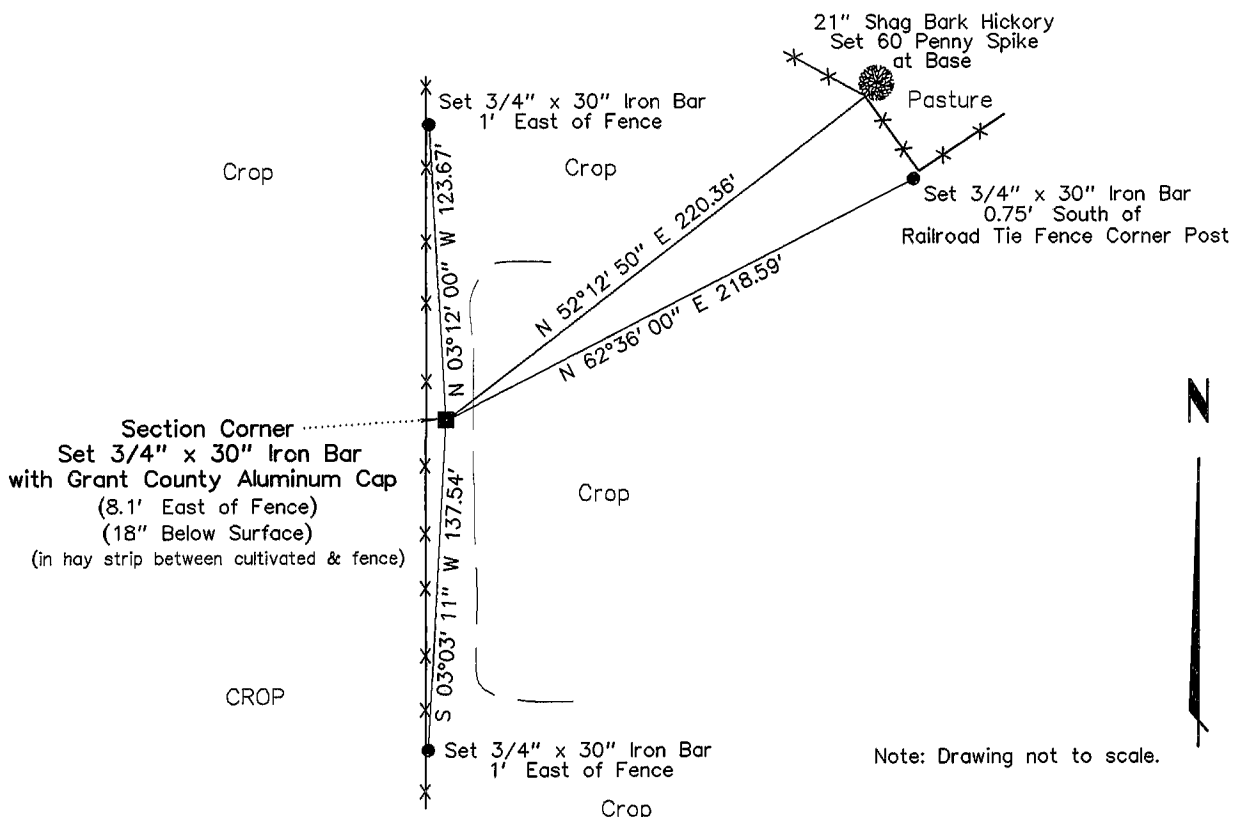
Note: Survey record at Book I, Page 66 prepared by Douglas Malliet of D.F.Burbach Municipal & Civil Engineers and dated 1983.

Both the Northwest and Southwest corners of Section 25 were re-established as part of said survey. The West line of the section was established by said survey as a straight line between said corners. The section line was depicted on said survey as being Easterly of existing occupation. The North/South location of the one-quarter corner was not determined as part of said survey.

As verification of the North/South location by single proportion, evidence of occupation along the North line of the SE 1/4 of Section 26 was located. It was found that extending direction of said occupation Easterly fits with the corner location as shown hereon.

Grant County Coordinates (survey feet): N=534965.071 E=825861.271

Show a plan view drawing depicting the relevant monuments, providing reference ties to at least four witness monuments. Describe witness monuments. Show relationship to occupation.



Describe any material discrepancy between the location of the corner as restored or reestablished and the location of that corner as previously restored or reestablished by distance and direction. Show the discrepancy on the plan view drawing. Show the distances between the corner as restored or reestablished, and (1) the corner as previously restored or reestablished – and (2) to at least two of the witness monuments shown on the previous drawing.

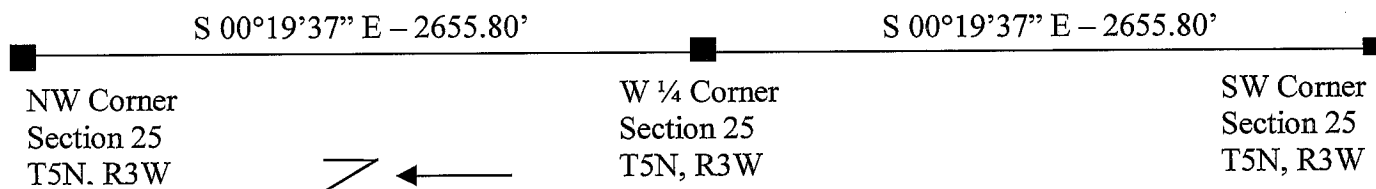
NA

Was the corner restored through acceptance of (1) an obliterated evidence location, (2) a found perpetuated location, or (3) an existent corner location.

(1) an obliterated evidence location

Was the corner reestablished through lost corner proportionate methods? If so, show the method including the directions to other public land survey corners used as evidence or used for proportioning in determining the corner location.

Yes, corner re-established by single proportionate measurement.



Show the history of record in chronological order from Original Government Survey to present.

- (1) Original corner established by Parke, 1832.
- (2) S. Mills uses corner as part of survey in Section 25 dated 1844.
- (3) In 1983, Douglas Malliet of D.F.Burbach Municipal & Civil Engineers establishes the location of the West line of Section 25, but does not determine the North/South line of the Section Corner.

I, Jessica A. Zamor, do hereby certify that the corner location shown on this record was determined by me or under my direction and control and that this U.S. Public Land Survey Monument Record is correct to the best of my knowledge and belief.

Jessica A. Zamor 5-11-2000
 Jessica A. Zamor R.L.S. S-2310 Date

