

MAR 24 2000

GRANT COUNTY CERTIFIED LAND CORNER

CERTIFICATE:

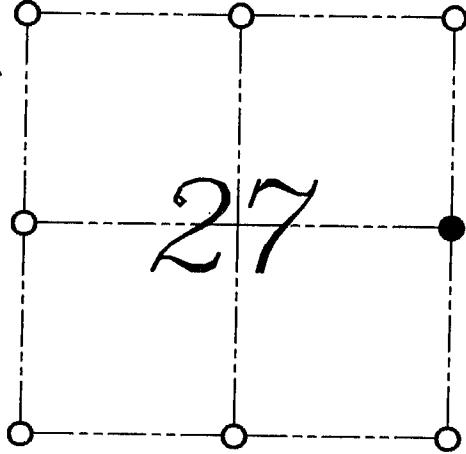
I, LARRY L. AUSTIN, DO HEREBY CERTIFY THAT ON NINETEENTH DAY OF OCTOBER, 1999, I FOUND MONUMENTED EVIDENCE OF THE EAST 1/4 CORNER SECTION 27, TOWN 5 NORTH, RANGE 3 WEST, OF THE FOURTH PRINCIPAL MERIDIAN, AND I RE-ESTABLISHED SAID CORNER ACCORDING TO THE WISCONSIN STATUTES AS SHOWN AND DESCRIBED HEREON.

DATED THIS TWENTY-FIFTH DAY OF OCTOBER, 1999

Larry L. Austin
LARRY L. AUSTIN S-1903



CORNER NUMBER 98



● = CORNER LOCATION
EAST 1/4 CORNER OF
SECTION 27, T 5 N R 3 W
TOWN OF NORTH LANCASTER

HISTORY OF ORIGINAL CORNER ESTABLISHMENT:

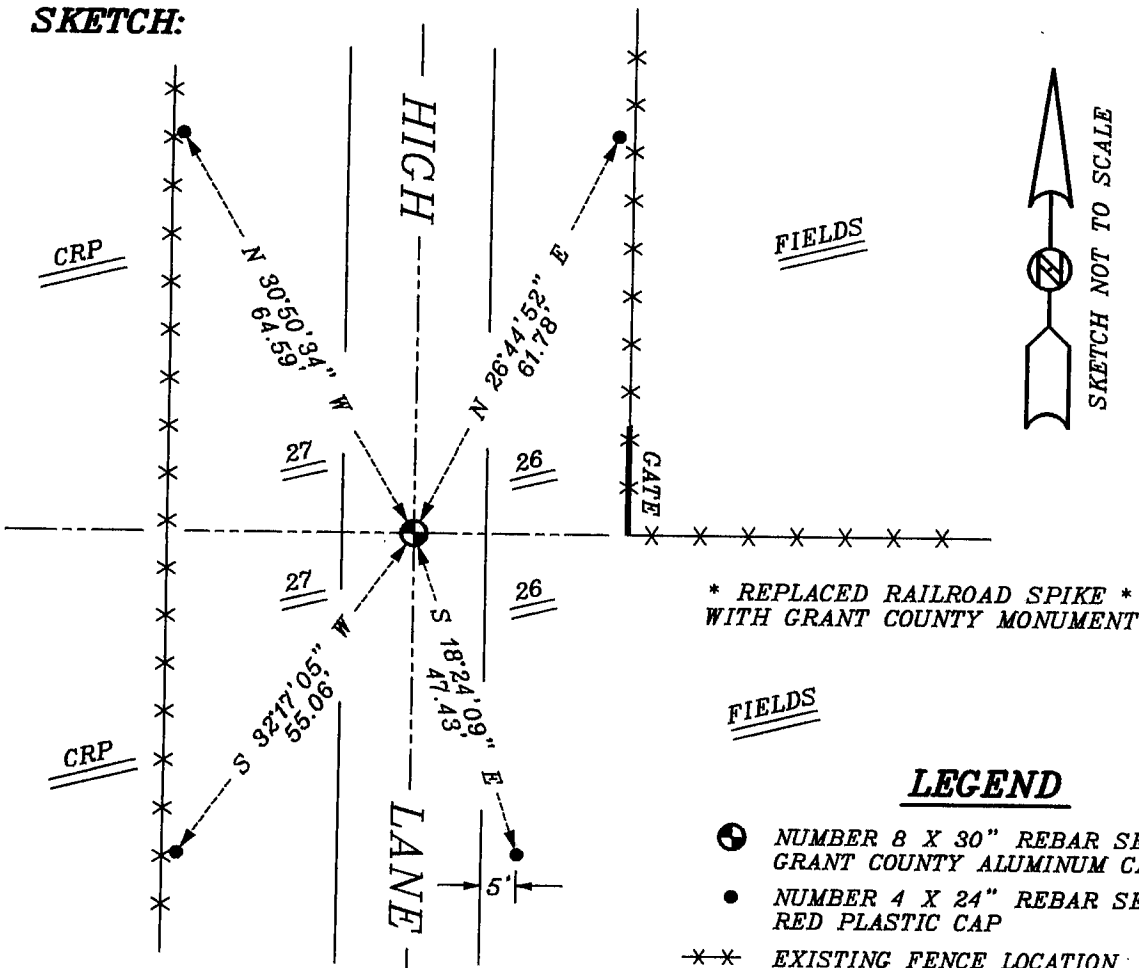
CORNER WAS SET IN 1832 BY HARVEY PARKE.
IN 1875 JOEL BARBER TIED TO THE CORNER AND ESTABLISHED
NEW BEARING TREES.

DESCRIPTION OF CORNER EVIDENCE FOUND:

I WAS UNABLE TO FIND THE BEARING TREES ESTABLISHED BY BARBER. I FOUND AN EXISTING RAILROAD SPIKE AND ACCEPTED THIS LOCATION AFTER AN E.D.M. AND G.P.S. TRAVERSE OF THE AREA.

DESCRIPTION OF CORNER AND WITNESS MONUMENTS, REFERENCES AND ACCESSORIES USED TO PERPETUATE THE ORIGINAL OR RE-ESTABLISHED LOCATION OF THIS CORNER:
WITNESS TO THE CORNER LOCATION: BOBBY SEDGWICK ; SHELBY BLINDERT

SKETCH:



* REPLACED RAILROAD SPIKE *
WITH GRANT COUNTY MONUMENT

LEGEND

- NUMBER 8 X 30" REBAR SET WITH GRANT COUNTY ALUMINUM CAP
- NUMBER 4 X 24" REBAR SET WITH RED PLASTIC CAP
- *-* EXISTING FENCE LOCATION