

U.S. PUBLIC LAND SURVEY MONUMENT RECORD - GRANT COUNTY, WI

Section 27, Town 5 North Range 3 West, Town of North Lancaster (a)

NOTE: This form is intended and designed to fulfill all requirements of the Wisconsin Administrative Code Chapter A-E 7.08, U.S. Public Land Survey Monument Record (3) (a) (b) (c) (d) (e) (f) (g) (h) (i).

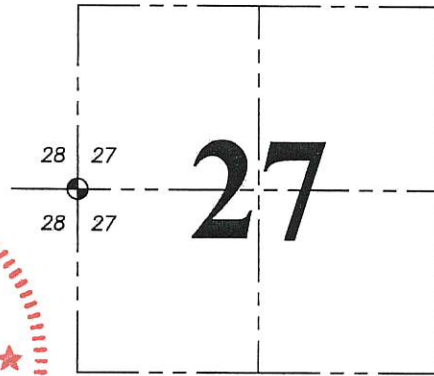
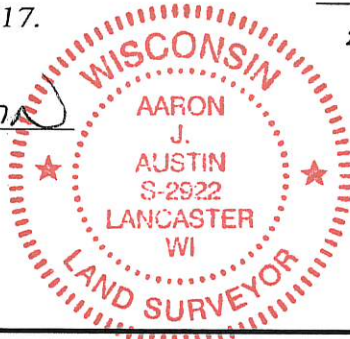
Corner No. 097

CERTIFICATE: (i)

I, Aaron J. Austin, Wisconsin Professional Land Surveyor, do hereby certify that the corner location on this record was determined by me and/or under my direct supervision and that this U.S. Public Land Survey Monument Record is correct and complete to the best of my knowledge and belief.

Dated this 3rd day of March, 2017.

Aaron J. Austin
 Aaron J. Austin, S-2922



⊕ = CORNER LOCATION

HISTORY OF CORNER ESTABLISHMENT:

Harvey Parke set the original corner in 1833. Douglas Malliet reset the corner and prepared a Survey Monument Record dated 3-5-1983

DESCRIPTION OF CORNER EVIDENCE FOUND: (b) (f) (g) (h)

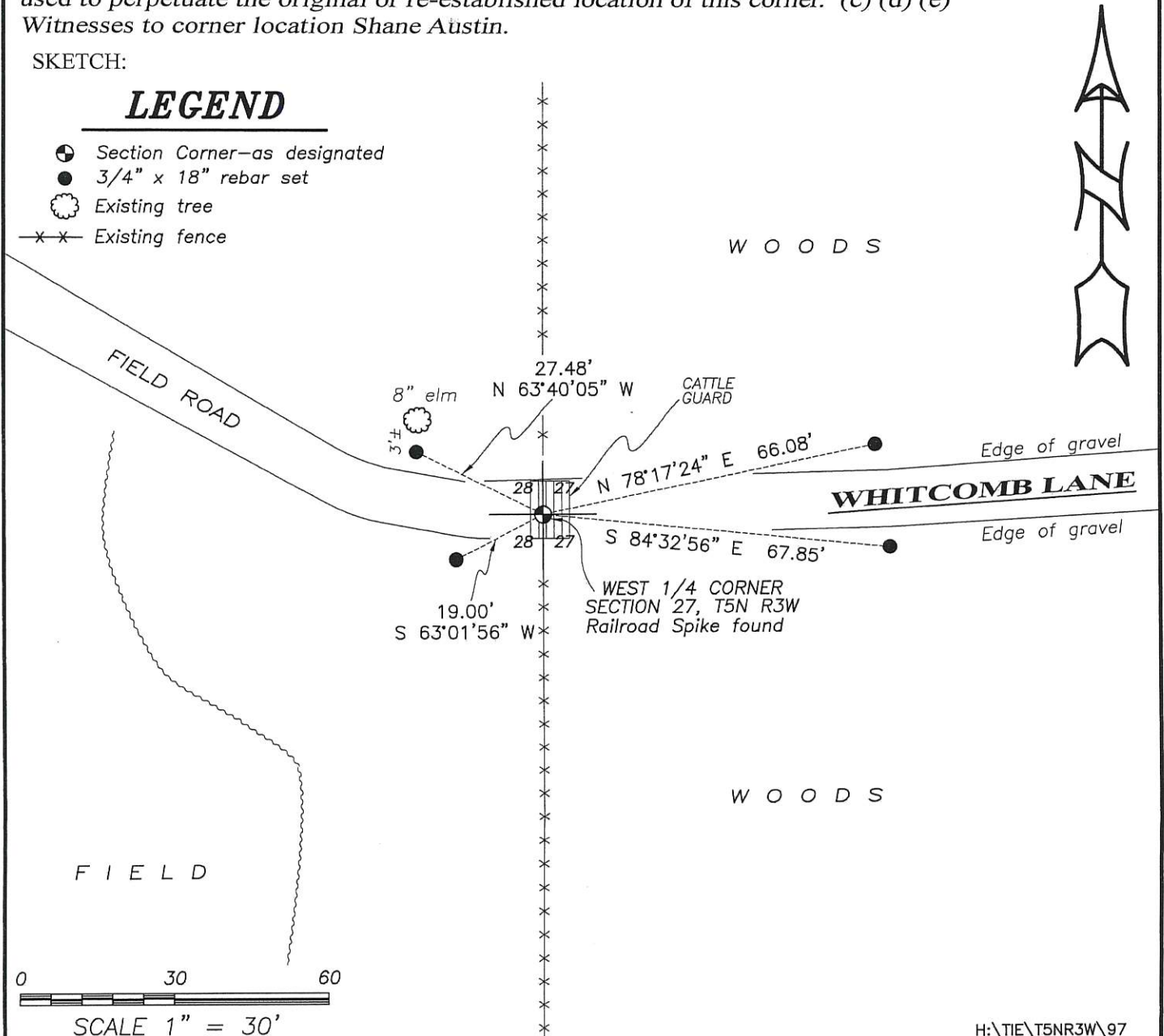
I found the railroad spike as set by Douglas Malliet. I set four new witness corners after I verified its location with G.P.S. and E.D.M. methods

DESCRIPTION OF CORNER AND WITNESS MONUMENTS, references and accessories used to perpetuate the original or re-established location of this corner. (c) (d) (e)
 Witnesses to corner location Shane Austin.

SKETCH:

LEGEND

- ⊕ Section Corner—as designated
- 3/4" x 18" rebar set
- ⊙ Existing tree
- x-x- Existing fence



North Lancaster Township

U.S. PUBLIC LAND SURVEY MONUMENT RECORD

CORNER DESCRIPTION: $\frac{1}{4}$ CORNER, SECTION 27, T 5 N, R 3 W

STATE PLANE COORDINATES: N _____, E _____

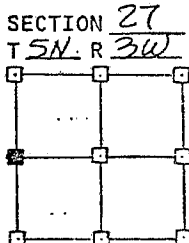
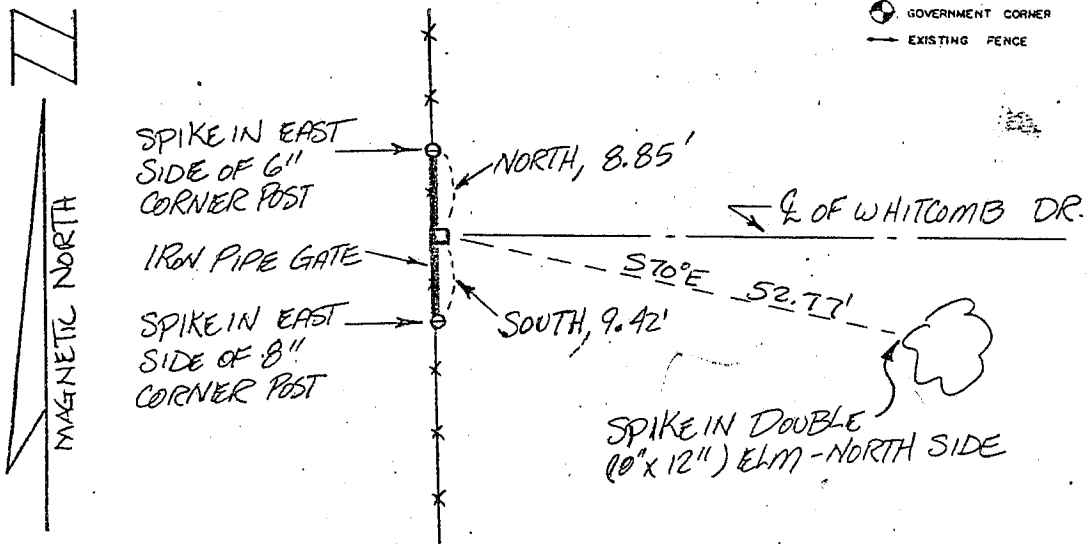
THETA ANGLE: _____

HORIZONTAL DATUM: WISCONSIN STATE PLANE COORDINATE SYSTEM, SOUTH ZONE

EVIDENCE: FOUND RAILROAD SPIKE SET BY DAVID DAVIS ON LONG-STANDING NORTH-SOUTH FENCE, $\frac{1}{2}$ IN ROAD

MONUMENT: FOUND , PLACED
METHOD OF RESTORATION (RE-ESTABLISHMENT):
 ACCEPTED EXISTING MONUMENT
N , E ACCEPTED OCCUPATION
N , E LOST CORNER PROPORTIONATE METHODS
DATE CORNER SET: 2-26-83

- LEGEND
- ▲ SET #6 REBAR, 113 LBS PER LINEAL FT. MIN. WT.
 - SET 1" X 24" IRON PIPE, 113 LBS PER LINEAL FT. MIN. WT.
 - SET 2" X 30" IRON PIPE, 365 LBS. PER LINEAL FT. MIN. WT.
 - FOUND 1" IRON PIPE
 - FOUND 2" IRON PIPE
 - FOUND R/R SPIKE
 - SET R/R SPIKE
 - ⊙ GOVERNMENT CORNER
 - EXISTING FENCE



NOT TO SCALE THIS CONFORMS TO WISCONSIN ADMINISTRATIVE CODE A-F 5.02

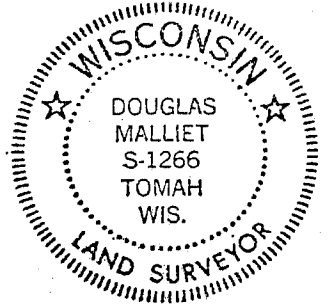
SURVEYOR'S AFFIDAVIT:

STATE OF WISCONSIN)
GRANT COUNTY) SS

I hereby certify that I, DOUGLAS J. MALLIET, have complied with the Wisconsin State Statutes, Statutes of the United States, and the rules and regulations made by the Secretary of the Interior in the location of the corner shown above.

DATE OF SURVEY: 3-5-83

Douglas J. Malliet
REGISTERED LAND SURVEYOR
7266



D. F. BURBACH MUNICIPAL & CIVIL ENGINEERS

410 NORTH SECOND STREET • PLATTEVILLE, WISCONSIN 53818 • (608) 348-3262

MAY 24 1983

Pr 97