

U.S. PUBLIC LAND SURVEY MONUMENT RECORD - GRANT COUNTY, WI

Section 28, Town 5 North Range 3 West, Town of North Lancaster (a)

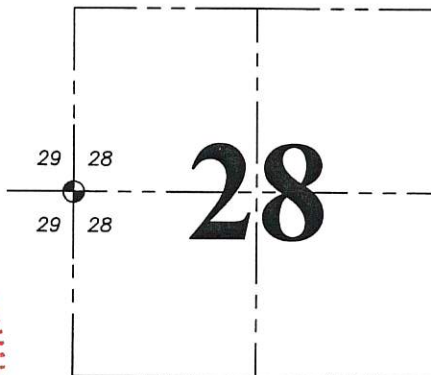
NOTE: This form is intended and designed to fulfill all requirements of the Wisconsin Administrative Code Chapter A-E 7.08, U.S. Public Land Survey Monument Record (3) (a) (b) (c) (d) (e) (f) (g) (h) (i).

CERTIFICATE: (i)

I, Aaron J. Austin, Wisconsin Professional Land Surveyor, do hereby certify that the corner location on this record was determined by me and/or under my direct supervision and that this U.S. Public Land Survey Monument Record is correct and complete to the best of my knowledge and belief.

Dated this 5th day of September, 2018

Aaron J. Austin
Aaron J. Austin, S-2922



☉ = CORNER LOCATION

Grant County Coordinates:
NAD 83 (2011)
Northing: 535,155.06
Easting: 809,962.68

HISTORY OF CORNER ESTABLISHMENT:

Harvey Parke set the original corner in 1832.
Douglas Malliet set a 3/4" rebar on a survey dated 7-31-1984 (GCA 622).
Larry Austin found the 3/4" rebar set by Malliet and placed a Grant County Aluminum Cap and prepared a Survey Monument Record dated 1-19-1996.

DESCRIPTION OF CORNER EVIDENCE FOUND: (b) (f) (g) (h)

I found the 3/4" rebar with Grant County Aluminum Cap. I set four new witness corners after I verified the monument with G.P.S. and E.D.M. methods.

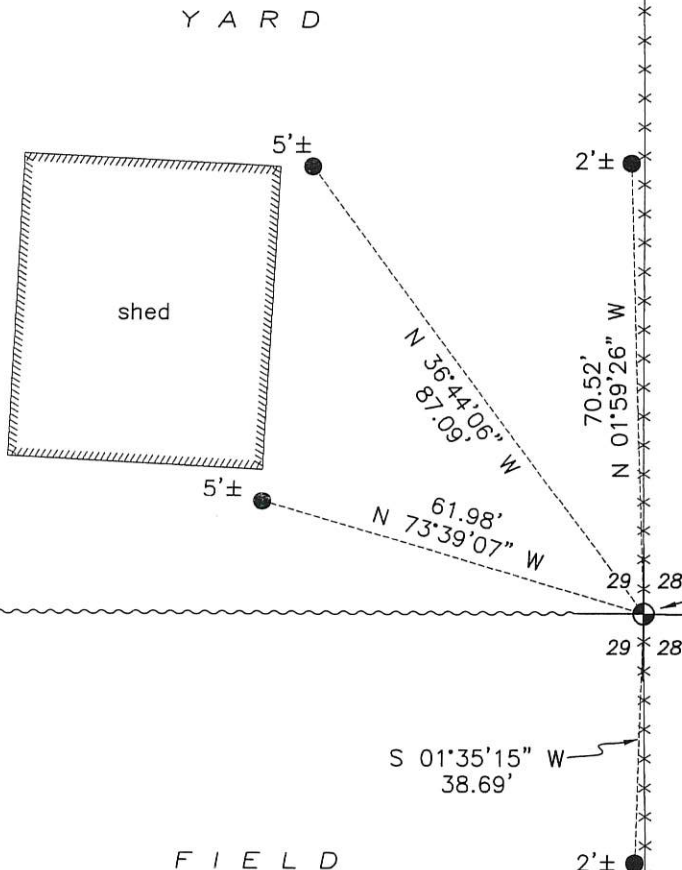
DESCRIPTION OF CORNER AND WITNESS MONUMENTS: references and accessories used to perpetuate the original or re-established location of this corner. (c) (d) (e)

Witnesses to corner location Shane Austin, Owen Austin.

SKETCH:

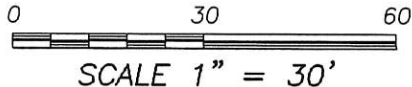
LEGEND

- ☉ Section Corner—as designated
- 3/4" x 18" rebar set
- x-x-x- Existing fence



WEST 1/4 CORNER
SECTION 28, T5N R3W
3/4" Rebar with Grant
County Aluminum Cap found

F I E L D



U.S. PUBLIC LAND SURVEY MONUMENT RECORD - GRANT COUNTY, WI

Section 28, Town 5 North Range 3 West, Town of North Lancaster (a)

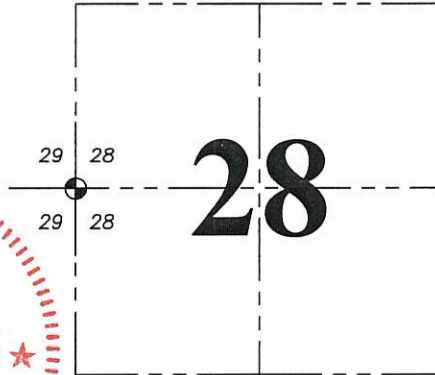
NOTE: This form is intended and designed to fulfill all requirements of the Wisconsin Administrative Code Chapter A-E 7.08, U.S. Public Land Survey Monument Record (3) (a) (b) (c) (d) (e) (f) (g) (h) (i).

CERTIFICATE: (i)

I, Aaron J. Austin, Wisconsin Professional Land Surveyor, do hereby certify that the corner location on this record was determined by me and/or under my direct supervision and that this U.S. Public Land Survey Monument Record is correct and complete to the best of my knowledge and belief.

Dated this 5th day of September, 2018.

Aaron J. Austin
Aaron J. Austin, S-2922



⊕ = CORNER LOCATION

Grant County Coordinates:
NAD 83 (2011)
Northing: 535,155.06
Easting: 809,962.68

HISTORY OF CORNER ESTABLISHMENT:

Harvey Parke set the original corner in 1832.
Douglas Malliet set a 3/4" rebar on a survey dated 7-31-1984 (GCA 622).
Larry Austin found the 3/4" rebar set by Malliet and placed a Grant County Aluminum Cap and prepared a Survey Monument Record dated 1-19-1996.

DESCRIPTION OF CORNER EVIDENCE FOUND: (b) (f) (g) (h)

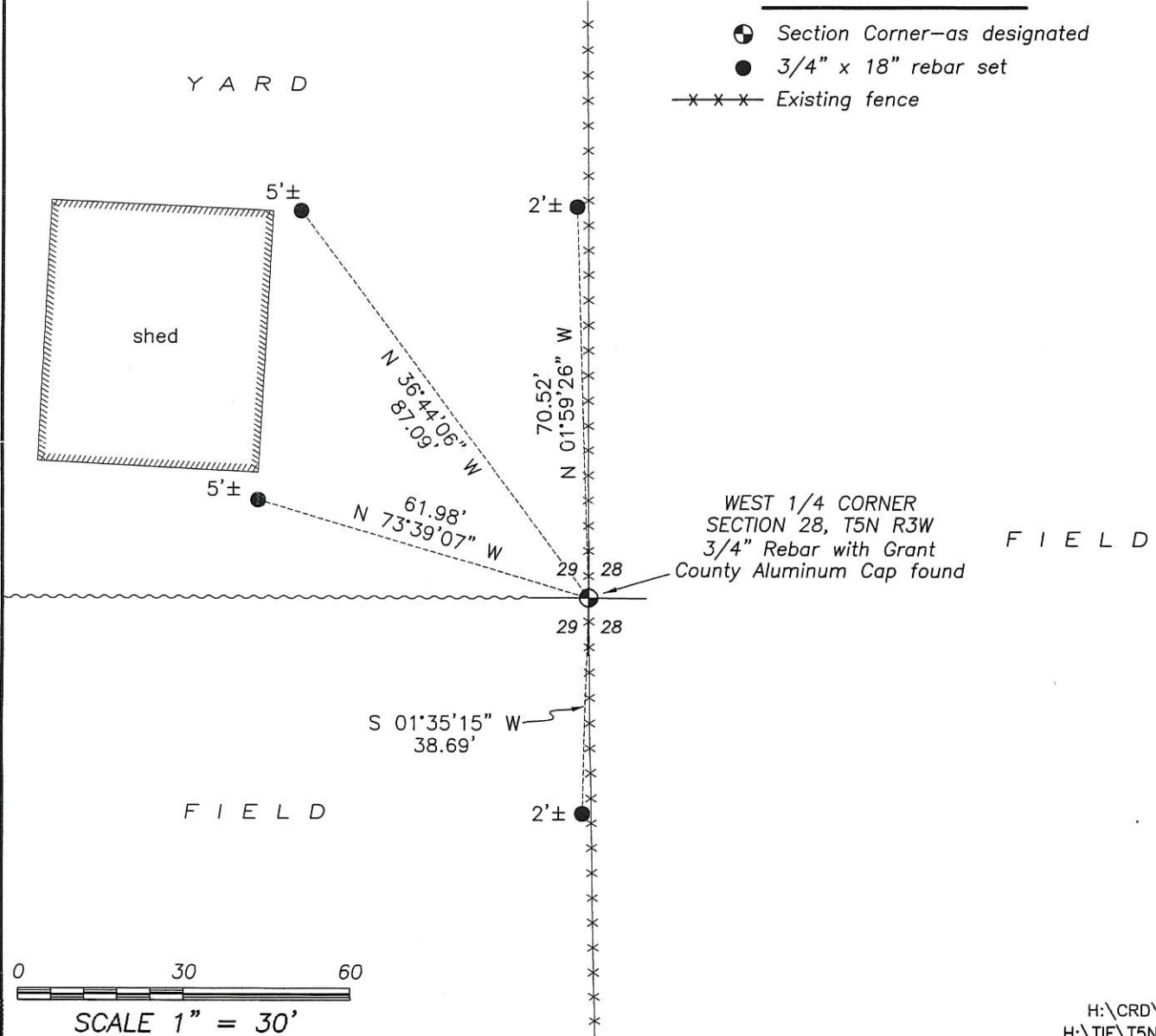
I found the 3/4" rebar with Grant County Aluminum Cap. I set four new witness corners after I verified the monument with G.P.S. and E.D.M. methods.

DESCRIPTION OF CORNER AND WITNESS MONUMENTS: references and accessories used to perpetuate the original or re-established location of this corner. (c) (d) (e)
Witnesses to corner location Shane Austin, Owen Austin.

SKETCH:

LEGEND

- ⊕ Section Corner—as designated
- 3/4" x 18" rebar set
- x-x-x- Existing fence



REC'D JAN 29 1996

Survey Monument Record

CORNER NO. 96
SECTION 28
TOWN 5N
RANGE 3W

TYPE OF MONUMENT 3/4" IRON ROD FOUND

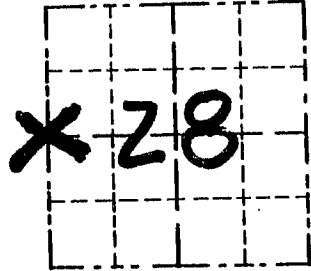
STATE PLANE COORDINATES: N _____
E _____

ELEVATION — M.S.L. DATUM: _____

THETA ANGLE: _____

FIELD BOOK: 95-10

PAGE 24



LOCATION
(Indicated by "X")

BASIS FOR MONUMENT LOCATION

(Use reverse side if necessary)

- 3/4" IRON BAR FOUND AT
OCCUPIED FENCE CORNER.
- BAR WAS SET IN CONJUNCTION
WITH 1984 MALLIET SURVEY
FOR THE CITY OF LANCASTER.

SEAL:



- PLACED A GRANT COUNTY
ALUMINUM CAP OVER BAR AFTER
VERIFICATION BY EDM TRAVERSE
OF THE AREA

CERTIFIED CORRECT

[Signature]
Registered Land Surveyor

DATE: 1/19/96

TIE SKETCH

Show at least three (3) ties and monument

