

U.S. PUBLIC LAND SURVEY MONUMENT RECORD - GRANT COUNTY, WI

Section 29, Town 5 North Range 3 West, Town of North Lancaster (a)

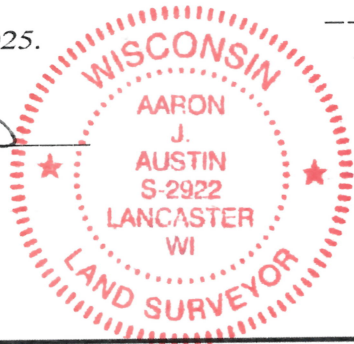
NOTE: This form is intended and designed to fulfill all requirements of the Wisconsin Administrative Code Chapter A-E 7.08, U.S. Public Land Survey Monument Record (3) (a) (b) (c) (d) (e) (f) (g) (h) (i).

CERTIFICATE: (i)

I, Aaron J. Austin, Wisconsin Professional Land Surveyor, do hereby certify that the corner location on this record was determined by me and/or under my direct supervision and that this U.S. Public Land Survey Monument Record is correct and complete to the best of my knowledge and belief.

Dated this 3rd day of April, 2025.

Aaron J. Austin
 Aaron J. Austin, PLS-2922



⊙ = CORNER LOCATION

Grant County Coordinates:
 NAD 83 (2011)
 Northing: 535,185.69
 Easting: 804,636.49

HISTORY OF CORNER ESTABLISHMENT:

Original corner was set in 1833 by Harvey Parke.
 Larry Austin set a Grant County Aluminum Monument and prepared a Survey Monument Record dated 1-8-1996.

DESCRIPTION OF CORNER EVIDENCE FOUND: (b) (f) (g) (h)

No evidence of Larry's Monument was found. I set a 1" x 24" Rebar from previous measurements to the corner on a Plat filed in Book 49, Page 41 and C.S.M. #2268. I found four witness corners after I verified the Monument's location with G.P.S. and E.D.M. methods.

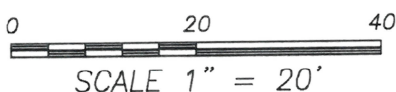
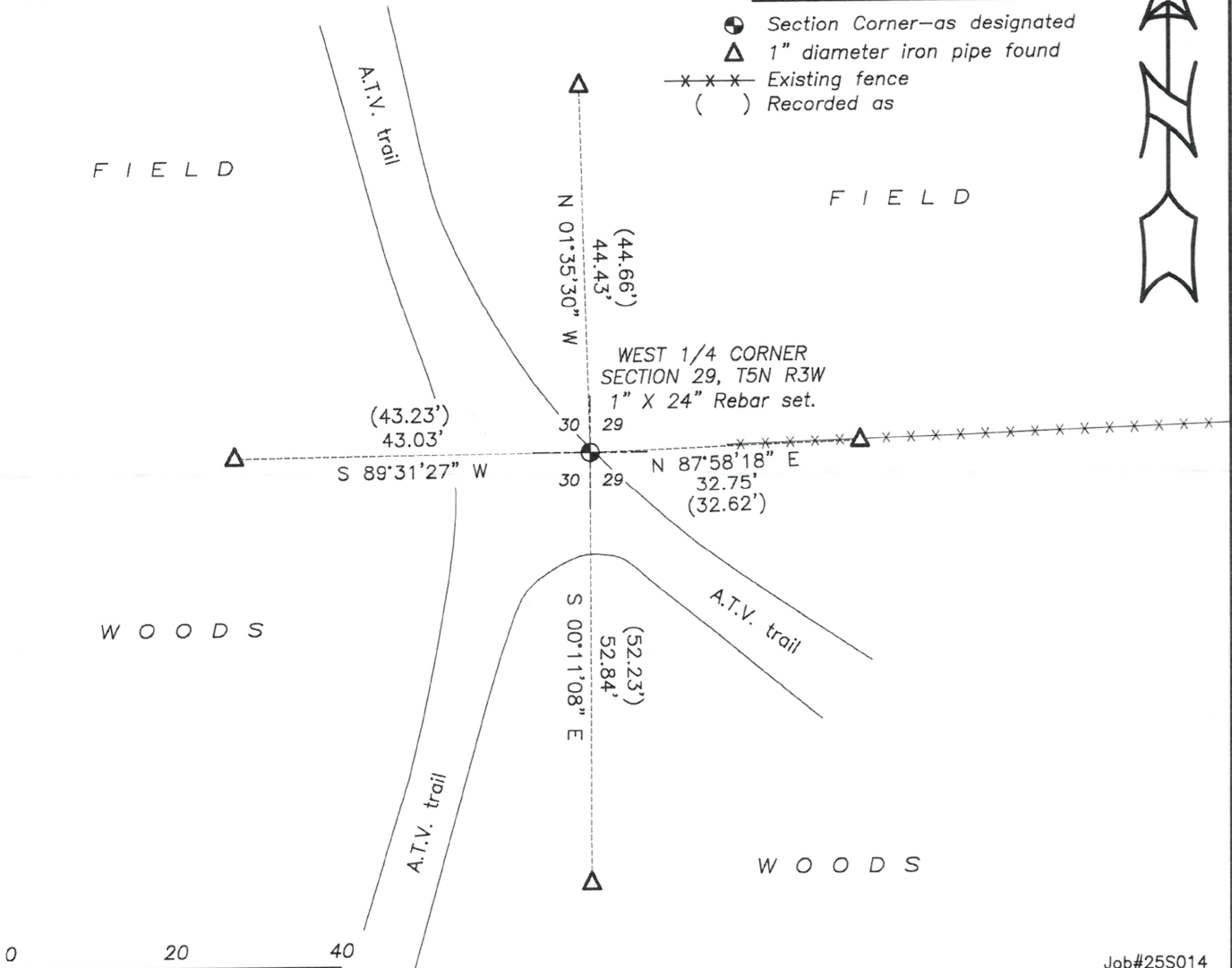
DESCRIPTION OF CORNER AND WITNESS MONUMENTS, references and accessories used to perpetuate the original or re-established location of this corner. (c) (d) (e)

Witnesses to corner location Owen Austin.
 Drawn by: Owen Austin.

SKETCH:

LEGEND

- ⊙ Section Corner—as designated
- △ 1" diameter iron pipe found
- x-x-x- Existing fence
- () Recorded as



GRANT COUNTY

REC'D JAN 29 1996

Survey Monument Record

TYPE OF MONUMENT GRANT Co. Alum. Mon

STATE PLANE COORDINATES: N _____
E _____

ELEVATION — M.S.L. DATUM: _____

THETA ANGLE: _____

FIELD BOOK: 95-13

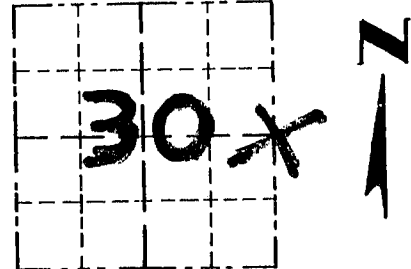
PAGE: (31)

CORNER NO. 75

SECTION 30

TOWN 5N

RANGE 3W



LOCATION
(Indicated by "X")

BASIS FOR MONUMENT LOCATION

(Use reverse side if necessary)

GRANT COUNTY ALUMINUM
MONUMENT PLACED AT
FENCE INTERSECTION AFTER
VERIFICATION BY EDM
TRAVERSE OF THE AREA.

SEAL:

CERTIFIED CORRECT

Kerry P. Rust
Registered Land Surveyor

DATE: 1/8/96

TIE SKETCH

Show at least three (3) ties and monument

