

North Lancaster Township

US. PUBLIC LAND SURVEY MONUMENT RECORD

CORNER DESCRIPTION: NW CORNER, SECTION 25, T 5 N, R 3 W

STATE PLANE COORDINATES: N _____, E _____

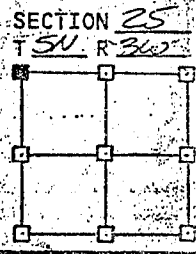
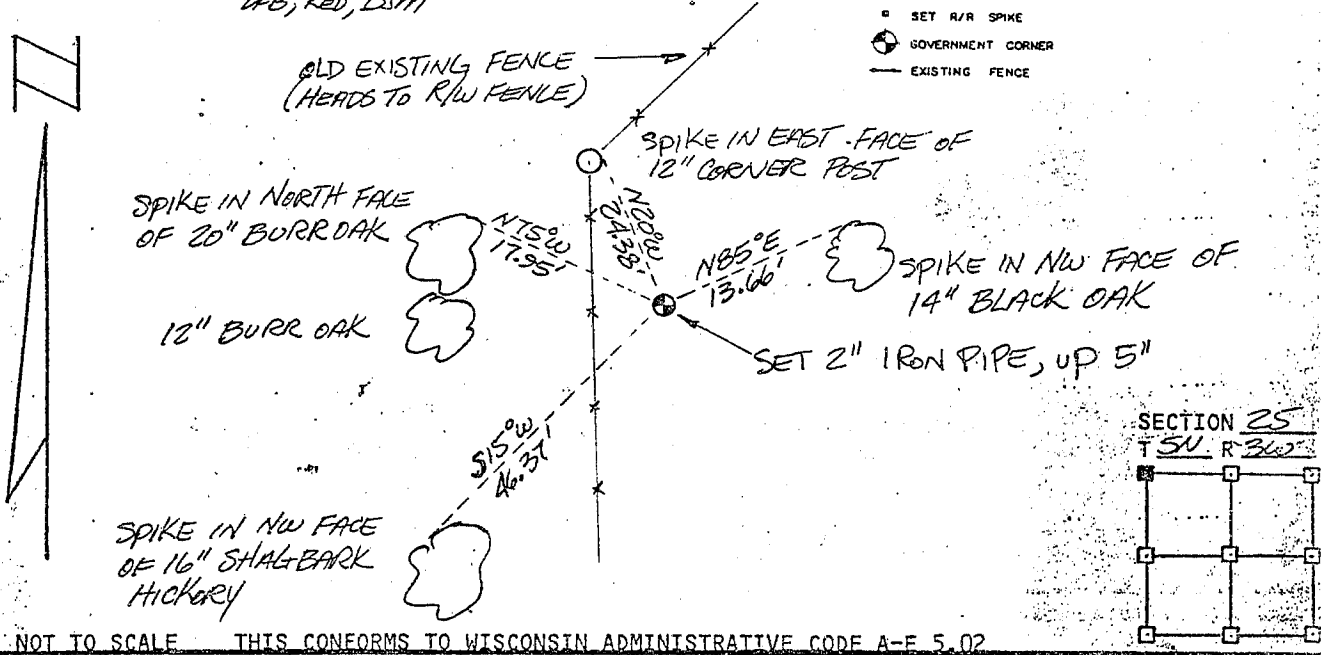
THETA ANGLE: _____

HORIZONTAL DATUM: WISCONSIN STATE PLANE COORDINATE SYSTEM, SOUTH ZONE

EVIDENCE: ~~NO CORNER MONUMENT OF RECORD - FENCE WANDERS WEST AS NEAR AS CORNER - FENCE IS OLD & LOCK'S STRAIGHT FOTHER TO SOUTH - NO OCCUPATION EAST OR WEST~~

MONUMENT: FOUND , PLACED
METHOD OF RESTORATION (RE-ESTABLISHMENT):
 ACCEPTED EXISTING MONUMENT
N , E ACCEPTED OCCUPATION
N , E LOST CORNER PROPORTIONATE METHODS
DATE CORNER SET: 3-12-83
DFB, Ked, DSM

- LEGEND
- ▲ SET #6 REBAR, 1.13 LBS PER LINEAL FT. MIN. WT.
 - SET 1" X 24" IRON PIPE, 1.13 LBS. PER LINEAL FT. MIN. WT.
 - SET 2" X 30" IRON PIPE, 3.65 LBS. PER LINEAL FT. MIN. WT.
 - FOUND 1" IRON PIPE
 - FOUND 2" IRON PIPE
 - FOUND R/R SPIKE
 - SET R/R SPIKE
 - ⊙ GOVERNMENT CORNER
 - EXISTING FENCE

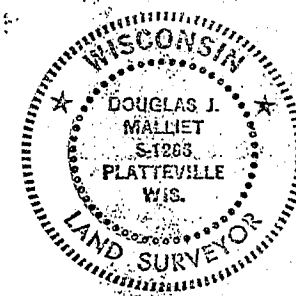


NOT TO SCALE THIS CONFORMS TO WISCONSIN ADMINISTRATIVE CODE A-F 5.02

SURVEYOR'S AFFIDAVIT:
STATE OF WISCONSIN)
GRANT COUNTY) SS

I hereby certify that I, DOUGLAS J. MALLIET, have complied with the Wisconsin State Statutes, Statutes of the United States, and the rules and regulations made by the Secretary of the Interior in the location of the corner shown above.

DATE OF SURVEY: 3-12-83
Douglas J. Malliet
REGISTERED LAND SURVEYOR
1266



F. BURBACH MUNICIPAL & CIVIL ENGINEERS

1014 NORTH SECOND STREET • PLATTEVILLE, WISCONSIN 53818 • (608) 348-3262

MAY 24 1983

P.B.