

U.S. PUBLIC LAND SURVEY MONUMENT RECORD - GRANT COUNTY, WI

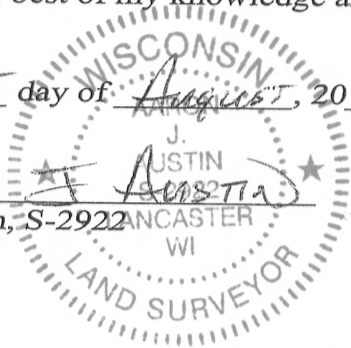
Section 24, Town 5 North Range 3 West, Town of North Lancaster

CERTIFICATE:

I, Aaron J. Austin, do hereby certify that the corner location on this record was determined by me and/or under my direct supervision and that this U.S. Public Land Survey Monument Record is correct and complete to the best of my knowledge and belief.

Dated this 15 day of August, 2013.

Aaron J. Austin
 Aaron J. Austin, S-2922 LANCASTER WI



● = CORNER LOCATION

GRANT COUNTY COORDINATES: N=540274.71 E=831092.97

HISTORY OF CORNER ESTABLISHMENT:

Corner was originally set by Lucius Lyon in 1832.
 No other record of this corner was found.

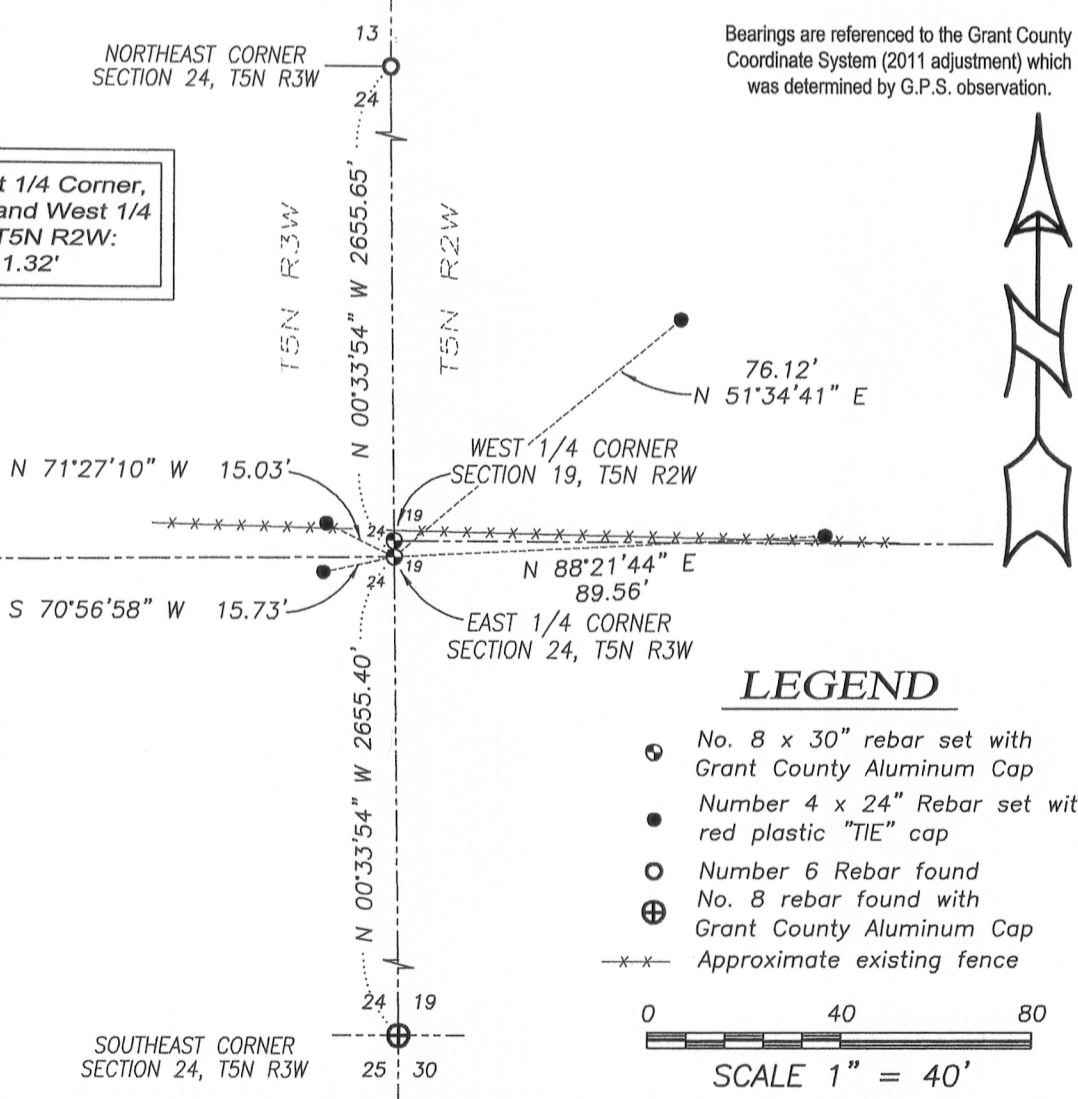
DESCRIPTION OF CORNER EVIDENCE FOUND:

Corner was set on a straight line between the Northeast corner and Southeast corner of Section 24 at the recorded prorated offset from the West 1/4 Corner of Section 19. Corner location was verified by E.D.M. and G.P.S methods.

DESCRIPTION OF CORNER AND WITNESS MONUMENTS, references and accessories used to perpetuate the original or re-established location of this corner. Witnesses to corner location Shane Austin.

SKETCH:

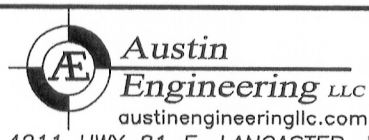
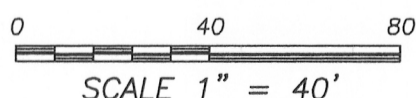
Distance between East 1/4 Corner, Section 24, T5N R3W and West 1/4 Corner Section 19, T5N R2W:
 N 00°33'54" W 1.32'



Bearings are referenced to the Grant County Coordinate System (2011 adjustment) which was determined by G.P.S. observation.

LEGEND

- No. 8 x 30" rebar set with Grant County Aluminum Cap
- Number 4 x 24" Rebar set with red plastic "TIE" cap
- ⊙ Number 6 Rebar found
- ⊕ No. 8 rebar found with Grant County Aluminum Cap
- x-x- Approximate existing fence



4211 HWY 81 E, LANCASTER, WI 53813
 PHONE: 608-723-6363 FAX: 608-723-6702

JOB NO: 11S192-A
 G:\GRANTDOT\HWY61B
 H:\TIE\T5NR3W\80

FIELDBOOK: TDSR
 DRAWN BY: AJ AUSTIN
 CREW: SW AUSTIN