

U.S. PUBLIC LAND SURVEY MONUMENT RECORD - GRANT COUNTY, WI

Section 19, Town 5 North Range 3 West, Town of North Lancaster (a)

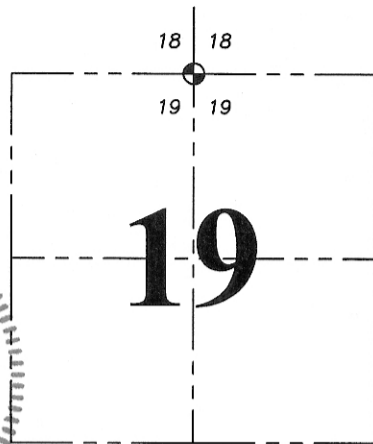
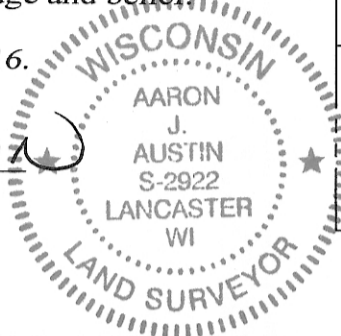
NOTE: This form is intended and designed to fulfill all requirements of the Wisconsin Administrative Code Chapter A-E 7.08, U.S. Public Land Survey Monument Record (3) (a) (b) (c) (d) (e) (f) (g) (h) (i).

CERTIFICATE: (i)

I, Aaron J. Austin, Wisconsin Professional Land Surveyor, do hereby certify that the corner location on this record was determined by me and/or under my direct supervision and that this U.S. Public Land Survey Monument Record is correct and complete to the best of my knowledge and belief.

Dated this 19th day of October, 2016.

Aaron J Austin
 Aaron J. Austin, S-2922



⊕ = CORNER LOCATION

HISTORY OF CORNER ESTABLISHMENT:

Harvey Parke set original corner in December 1832-January 1833.
 F. C. Beardsley tied to the corner on a survey dated 1884 filed in Book D, Page 152.
 Larry Austin reset the corner and prepared a Survey Monument Record dated 9-15-1995.
 Several more recent surveys have tied and accepted the corner established by Larry Austin.

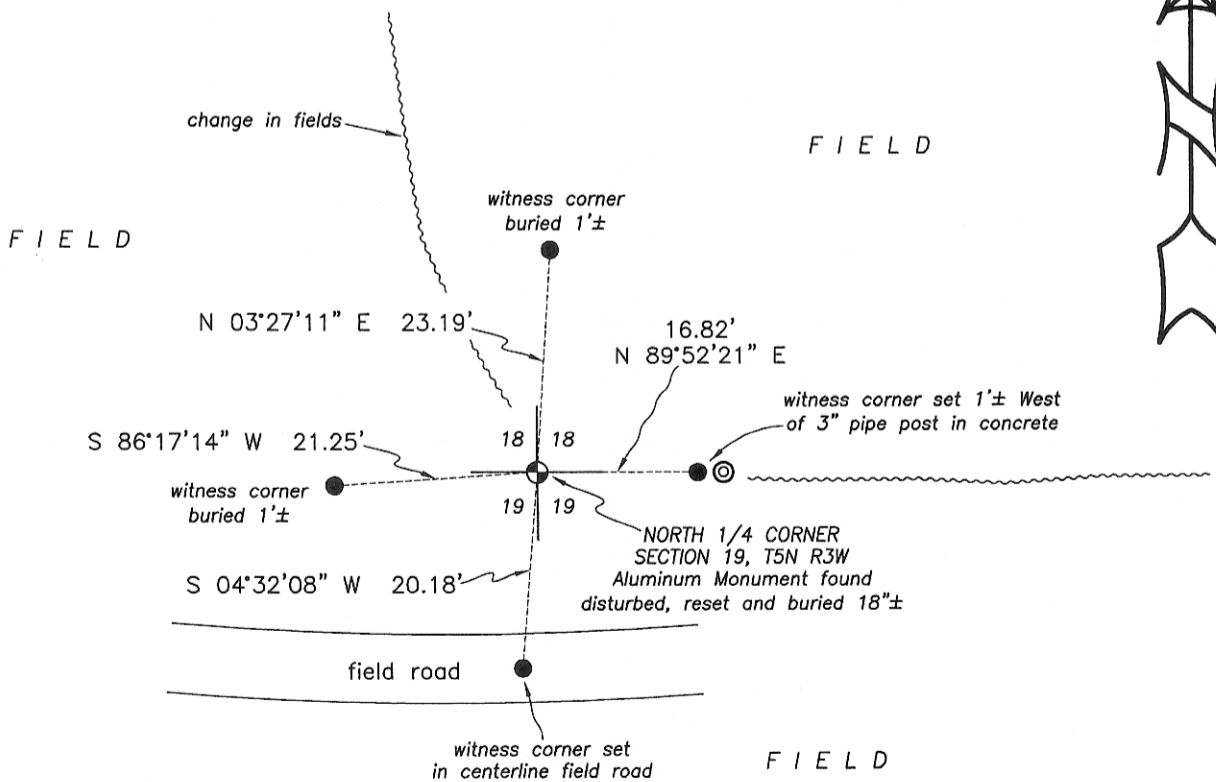
DESCRIPTION OF CORNER EVIDENCE FOUND: (b) (f) (g) (h)

The monument set by Larry Austin was found disturbed because of recent fence removal. I reset the found monument and buried it 18" ± to preserve it's location. No witness corners were recovered. I reset the corner based upon measurements to area corners and a Plat of Survey prepared by Larry Austin dated 1-31-2007 filed in Book 20, Page 69 of Grant County Surveys. I set 4 new witness corners after I verified the corner's location with G.P.S. methods.

DESCRIPTION OF CORNER AND WITNESS MONUMENTS, references and accessories used to perpetuate the original or re-established location of this corner. (c) (d) (e)

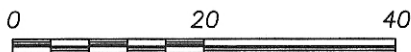
Witnesses to corner location: Shane Austin.

SKETCH:



LEGEND

- ⊕ Section Corner - as designated
- 1/2" x 12" rebar set
- ⊙ 3" Pipe post in concrete



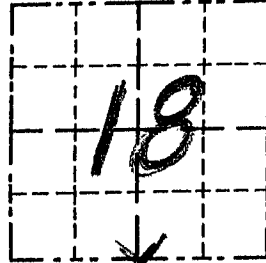
SCALE 1" = 20'

GRANT COUNTY

Survey Monument Record

TYPE OF MONUMENT COUNTY MONUMENT
 STATE PLANE COORDINATES: N _____
 E _____
 ELEVATION — M.S.L. DATUM: _____
 THETA ANGLE: _____
 FIELD BOOK: 9505
 PAGE 17

CORNER NO. 72
 SECTION 18
 TOWN 5 N
 RANGE 3 W
S 1/4 Cor



LOCATION
 (Indicated by "X")

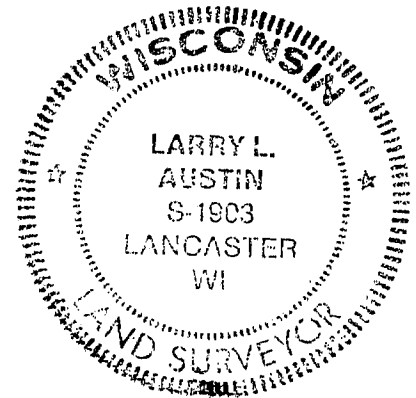
BASIS FOR MONUMENT LOCATION

(Use reverse side if necessary)

Show info such as: History of corner, with reference to Vol. and pg., dates, surveyor; exact description of monument replaced; if location computed, by taped or EDM traverse; landowner, remarks, etc.

SEAL:

NO RECORD FOUND SINCE ORIGINAL SURVEY IN 1833 BY PARKE. CORNER WAS SET AT OCCUPIED FENCE CORNER AND VERIFIED BY EDM TRAVERSE OF THE AREA



CERTIFIED CORRECT

Larry L. Austin
 Registered Land Surveyor

DATE: 9/15/95

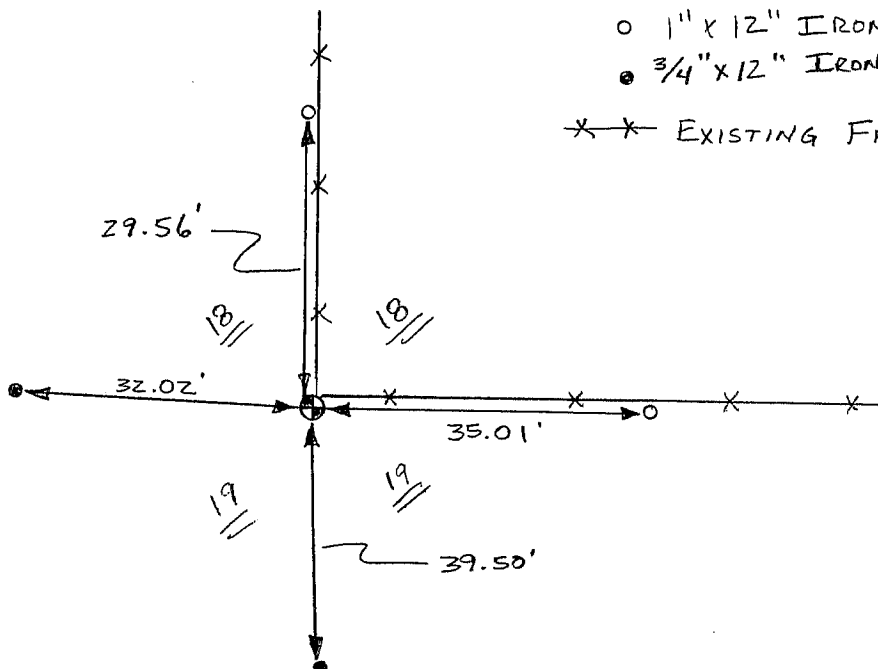
TIE SKETCH

Show at least three (3) ties and monument

LEGEND

- ⊕ GRANT COUNTY ALUMINUM MON. SET
- 1" x 12" IRON PIPE SET
- 3/4" x 12" IRON BAR SET

* * * EXISTING FENCE



NO SCALE