

53058

U.S. PUBLIC LAND SURVEY MONUMENT RECORD - GRANT COUNTY, WI

Section 15, Town 5 North Range 3 West, Town of North Lancaster (a)

NOTE: This form is intended and designed to fulfill all requirements of the Wisconsin Administrative Code Chapter A-E 7.08, U.S. Public Land Survey Monument Record (3) (a) (b) (c) (d) (e) (f) (g) (h) (i).

CERTIFICATE: (i)

I, Aaron J. Austin, Wisconsin Professional Land Surveyor, do hereby certify that the corner location on this record was determined by me and/or under my direct supervision and that this U.S. Public Land Survey Monument Record is correct and complete to the best of my knowledge and belief.

Dated this 24th day of April, 2023.

Aaron J. Austin
Aaron J. Austin, S-2922



Grant County Coordinates:
NAD 83 (2011)
Northing: 545,639.88
Easting: 820,480.35

● = CORNER LOCATION

HISTORY OF CORNER ESTABLISHMENT:

Original corner was set in 1832 by Harvey Parke.
Steven Rossman set a 3/4" Rebar on C.S.M. # 656 dated 6-5-2000.
Larry Austin found a 3/4" Rebar and prepared a Survey Monument Record dated 9-22-2002.

DESCRIPTION OF CORNER EVIDENCE FOUND: (b) (f) (g) (h)

I found two witness corners and used the recorded distances to set a 3/4" x 18" Rebar. I set two additional witness corners after I verified the Monument's location with G.P.S. and E.D.M. methods.

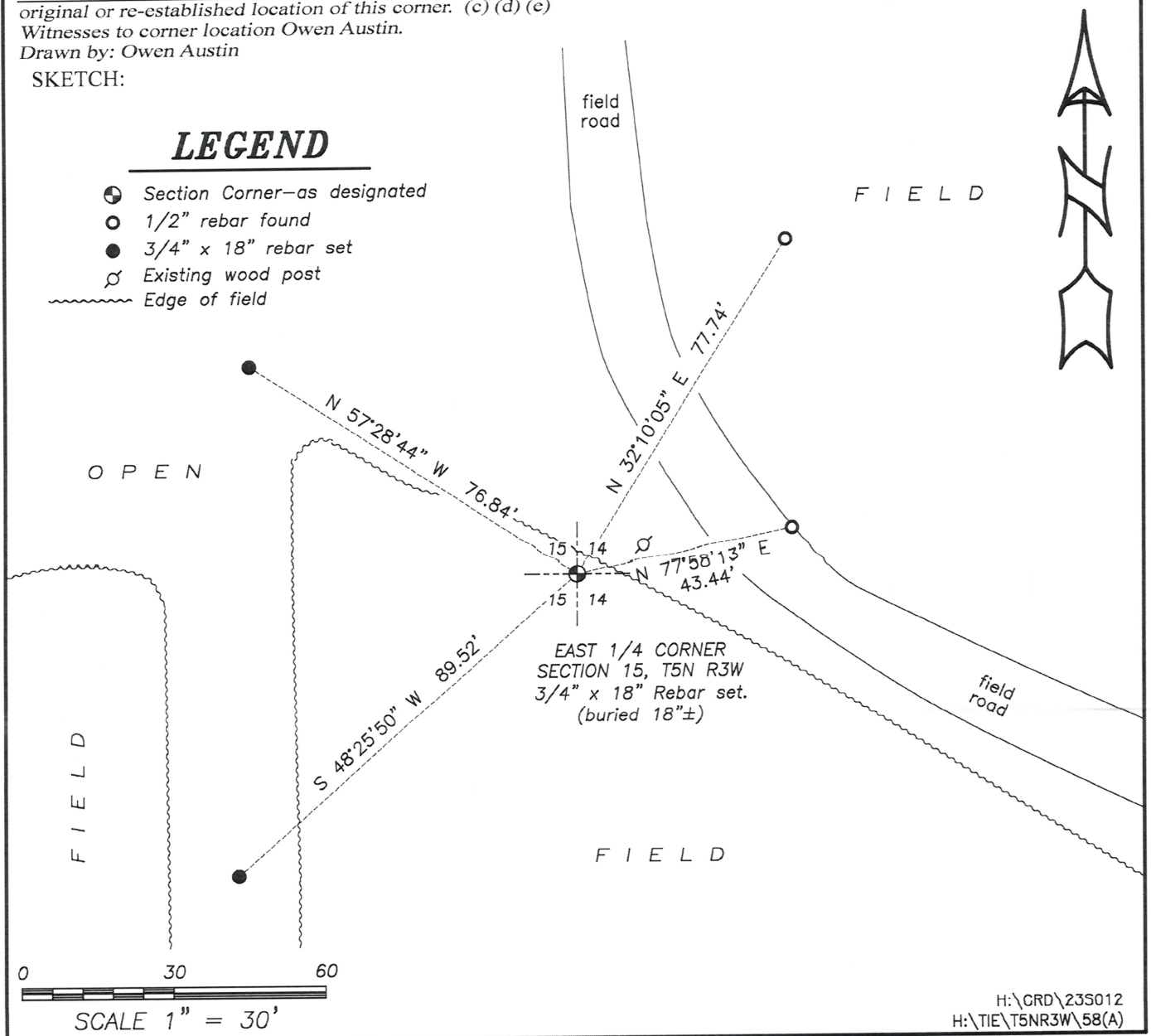
DESCRIPTION OF CORNER AND WITNESS MONUMENTS, references and accessories used to perpetuate the original or re-established location of this corner. (c) (d) (e)

Witnesses to corner location Owen Austin.
Drawn by: Owen Austin

SKETCH:

LEGEND

- Section Corner—as designated
- 1/2" rebar found
- 3/4" x 18" rebar set
- ⊕ Existing wood post
- ~~~~~ Edge of field



U.S. PUBLIC LAND SURVEY MONUMENT RECORD – GRANT COUNTY, WI

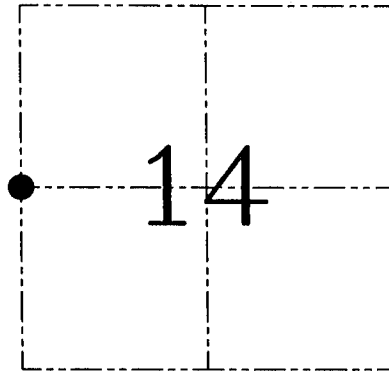
Section 14, Town 5 North Range 3 West, Town of North Lancaster

CERTIFICATE

I, Larry L. Austin, do hereby certify that the corner location on this record was determined by me and/or under my direct supervision and that this U.S. public land survey monument record is correct and complete to the best of my knowledge and belief.

Dated this 22nd day of September, 2002

Larry L. Austin
Larry L. Austin S-1903



● = CORNER LOCATION

HISTORY OF CORNER ESTABLISHMENT

Corner was originally set in 1832 by Harvey Parke. In the 1890's Sampson tied to this corner various times presumably (not signed or dated). In June 2000 Rossman set a #6 iron bar at this location.

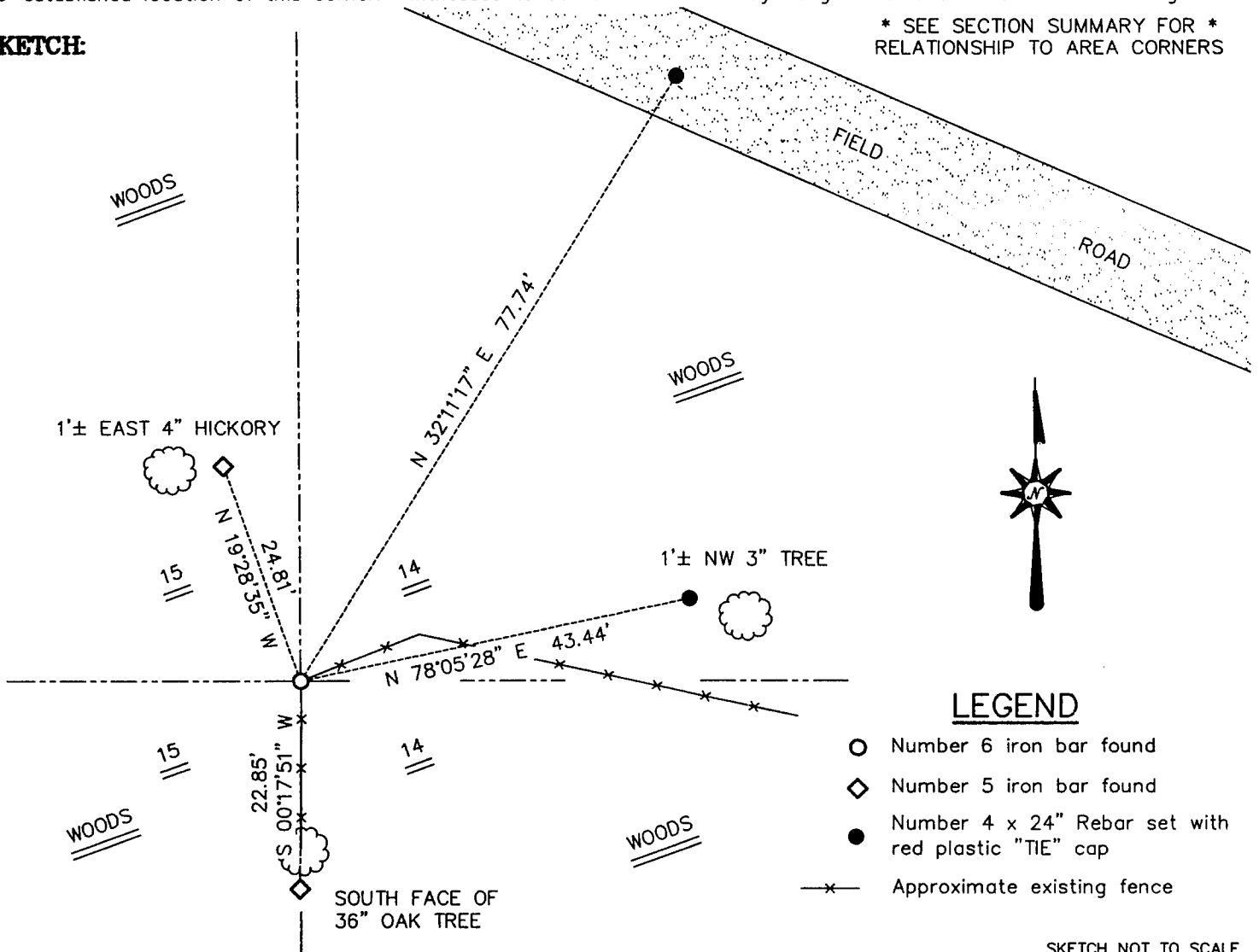
DESCRIPTION OF CORNER EVIDENCE FOUND

I found and accepted the #6 iron bar after an EDM & GPS traverse of the area.

DESCRIPTION OF CORNER AND WITNESS MONUMENTS, references and accessories used to perpetuate the original or re-established location of this corner. Witnesses to corner location Bobby Sedgwick & Shane Austin & Brad Digman

* SEE SECTION SUMMARY FOR *
RELATIONSHIP TO AREA CORNERS

SKETCH:



LEGEND

- Number 6 iron bar found
- ◇ Number 5 iron bar found
- Number 4 x 24" Rebar set with red plastic "TIE" cap
- x— Approximate existing fence

SKETCH NOT TO SCALE

AUSTIN ENGINEERING, LLC

4211 HWY 81 EAST, LANCASTER, WI 53813
PHONE 608-723-6363 FAX 608-723-6702

FIELDBOOK: SDR33, 2223
G: \T5NR3W\27
C: \SWA\TIE\T5NR3W\58
CREW: BS-SB-SA-BD

DRAWN BY: SW AUSTIN
APPROVED: LL AUSTIN

CORNER NUMBER 58