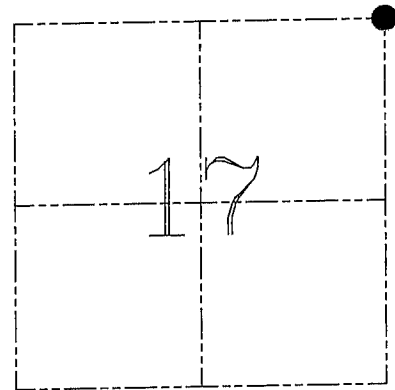
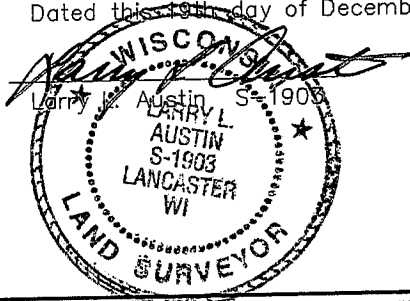


**U.S. PUBLIC LAND SURVEY MONUMENT RECORD – GRANT COUNTY, WI**  
**Section 17, Town 5 North Range 3 West, Town of North Lancaster**

**CERTIFICATE**

I, Larry L. Austin, do hereby certify that the corner location on this record was determined by me and/or under my direct supervision and that this U.S. public land survey monument record is correct and complete to the best of my knowledge and belief.

Dated this 19th day of December, 2003



● = CORNER LOCATION

**HISTORY OF CORNER ESTABLISHMENT**

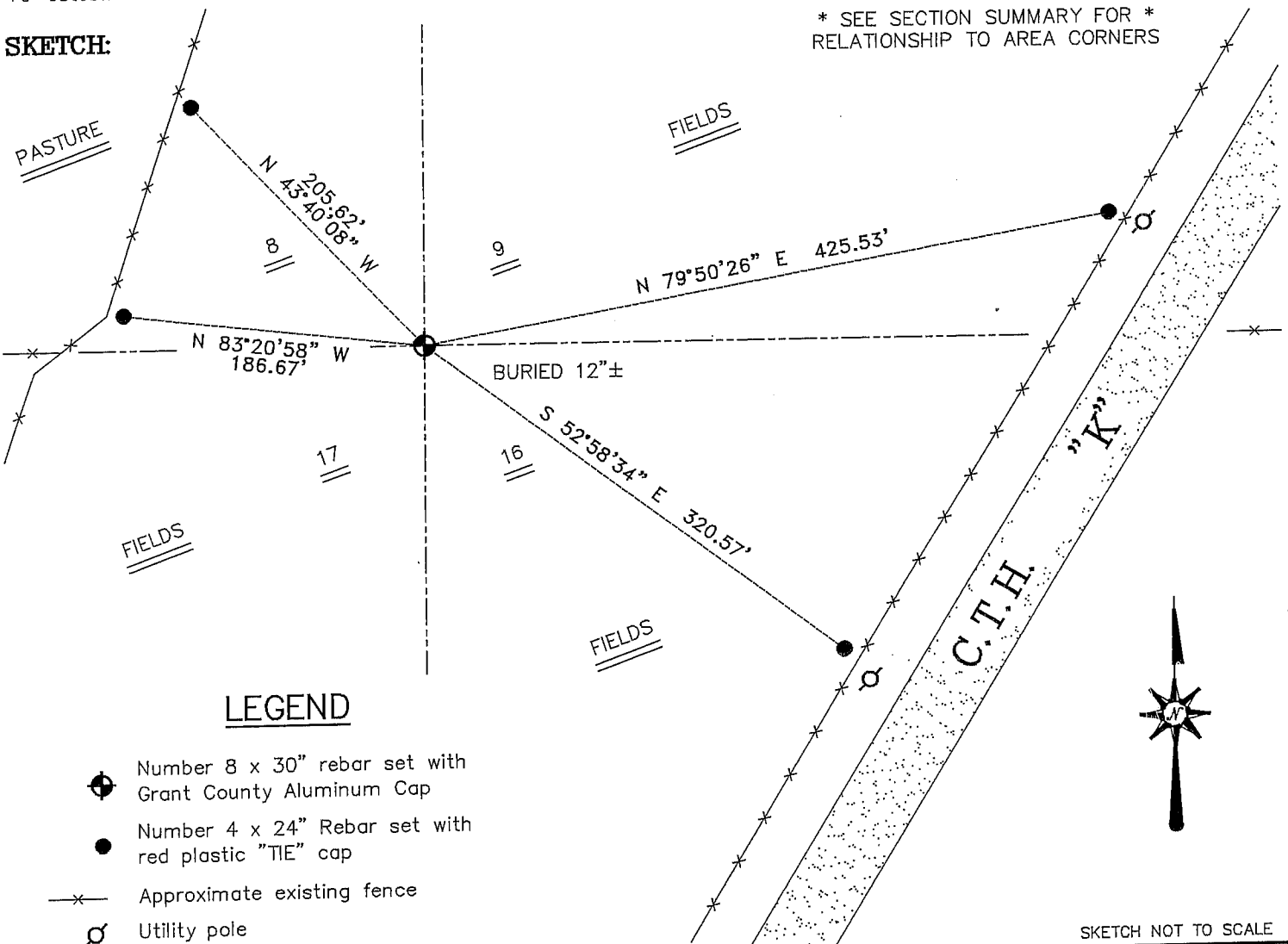
Corner was originally set in 1832 by Parke.  
 No other record of the corner was found.

**DESCRIPTION OF CORNER EVIDENCE FOUND**

I reset the corner based on a projection of the occupied East line of the Southeast Quarter of the Northeast Quarter. Verified this location using EDM & GPS methods.

**DESCRIPTION OF CORNER AND WITNESS MONUMENTS**, references and accessories used to perpetuate the original or re-established location of this corner. Witnesses to corner location Bobby Sedgwick & Shane Austin & Brad Digman

**SKETCH:**



**LEGEND**

- Number 8 x 30" rebar set with Grant County Aluminum Cap
- Number 4 x 24" Rebar set with red plastic "TIE" cap
- x— Approximate existing fence
- ⊙ Utility pole

SKETCH NOT TO SCALE

**AUSTIN ENGINEERING, LLC**  
 4211 HWY 81 EAST, LANCASTER, WI 53813  
 PHONE 608-723-6363 FAX 608-723-6702

FIELDBOOK: TDS RNGR, 2144  
 G: \T5NR3W\08  
 H: \TIE\T5NR3W\49  
 JOB NUMBER 03S311

DRAWN BY: SW AUSTIN  
 APPROVED: LL AUSTIN

**CORNER NUMBER 49**