

53047

# U.S. PUBLIC LAND SURVEY MONUMENT RECORD - GRANT COUNTY, WI

Section 16, Town 5 North Range 3 West, Town of North Lancaster (a)

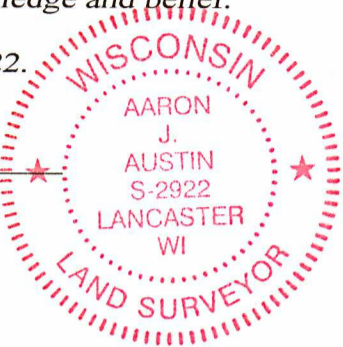
NOTE: This form is intended and designed to fulfill all requirements of the Wisconsin Administrative Code Chapter A-E 7.08, U.S. Public Land Survey Monument Record (3) (a) (b) (c) (d) (e) (f) (g) (h) (i).

### CERTIFICATE: (i)

I, Aaron J. Austin, Wisconsin Professional Land Surveyor, do hereby certify that the corner location on this record was determined by me and/or under my direct supervision and that this U.S. Public Land Survey Monument Record is correct and complete to the best of my knowledge and belief.

Dated this 9th day of March, 2022.

*Aaron J. Austin*  
Aaron J. Austin, S-2922



⊕ = CORNER LOCATION

Grant County Coordinates:  
NAD 83 (2011)  
Northing: 548,326.96  
Easting: 815,160.92

### HISTORY OF CORNER ESTABLISHMENT:

Original corner was set in 1833 by Harvey Parke.  
No other Record of this corner being set was found.

### DESCRIPTION OF CORNER EVIDENCE FOUND: (b) (f) (g) (h)

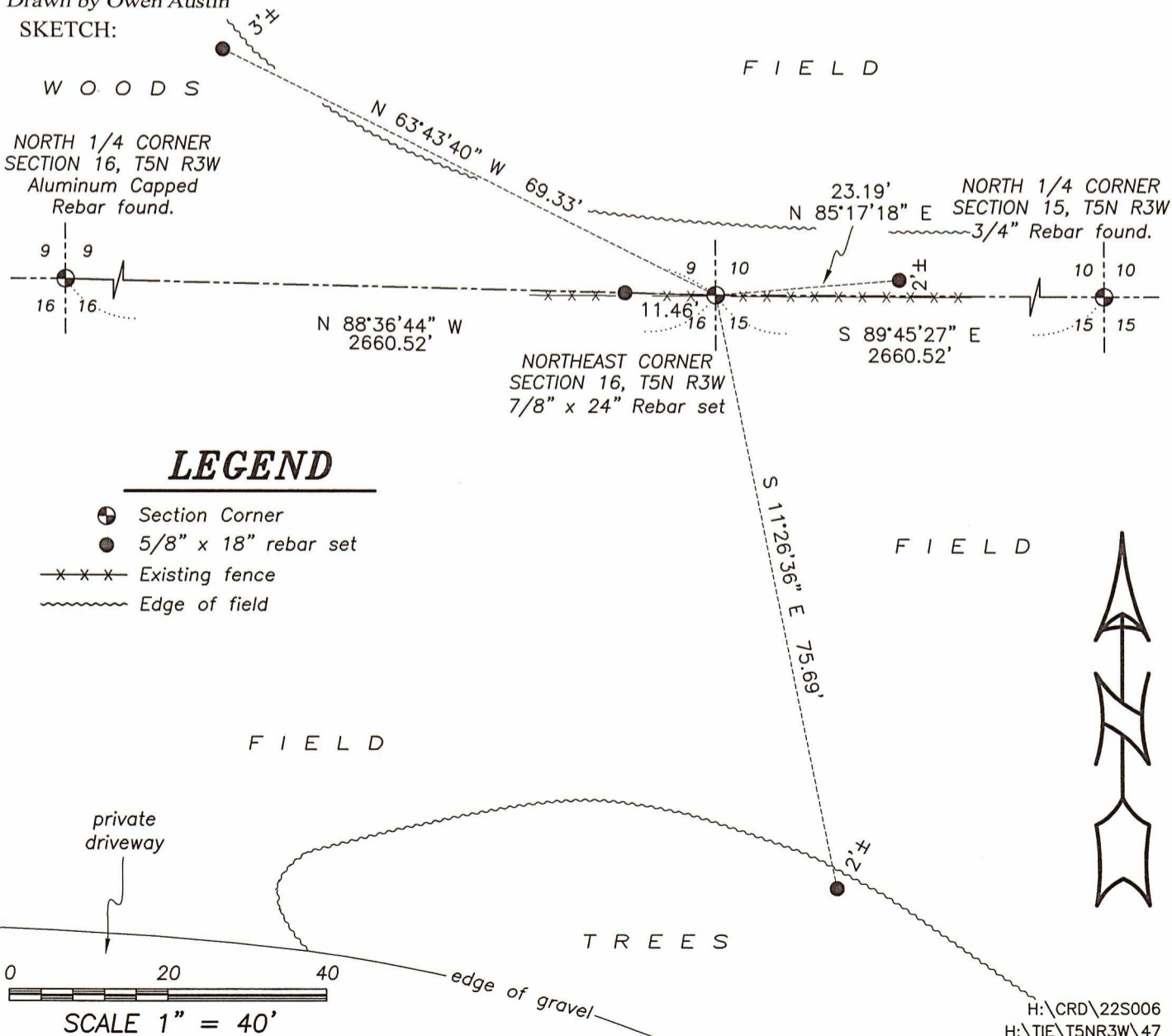
I set a 7/8" Rebar equadistant from the North 1/4 corner of Section and the North 1/4 corner of Section 16 and accepted an East-West fence line for Northing. This location also coincides with a projection of a fence from the South. I set four witness corners after I verified the Monument's location with G.P.S. and E.D.M. methods.

### DESCRIPTION OF CORNER AND WITNESS MONUMENTS, references and accessories used to perpetuate the original or re-established location of this corner. (c) (d) (e)

Witnesses to corner location Shane Austin, Owen Austin, Tanner Austin.

Drawn by Owen Austin

### SKETCH:



### LEGEND

- ⊕ Section Corner
- 5/8" x 18" rebar set
- x-x-x- Existing fence
- ~~~~~ Edge of field