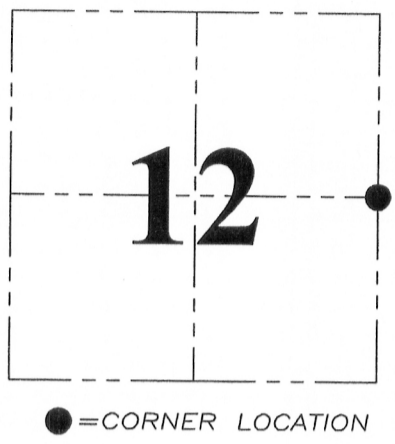


U.S. PUBLIC LAND SURVEY MONUMENT RECORD - GRANT COUNTY, WI
 Section 12, Town 5 North Range 3 West, Town of North Lancaster

CERTIFICATE:
 I, Aaron J. Austin, do hereby certify that the corner location on this record was determined by me and/or under my direct supervision and that this U.S. Public Land Survey Monument Record is correct and complete to the best of my knowledge and belief.

Dated this 15 day of August, 2013.

Aaron J. Austin
 Aaron J. Austin, S-2922



GRANT COUNTY COORDINATES: N=550881.56 E=831046.76

HISTORY OF CORNER ESTABLISHMENT:

Corner originally set by Lucius Lyon in 1832. Corner was dimensioned in on Plat of Right of Way Division Job No. 9577. No other record of corner found.

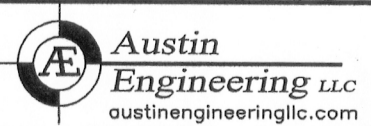
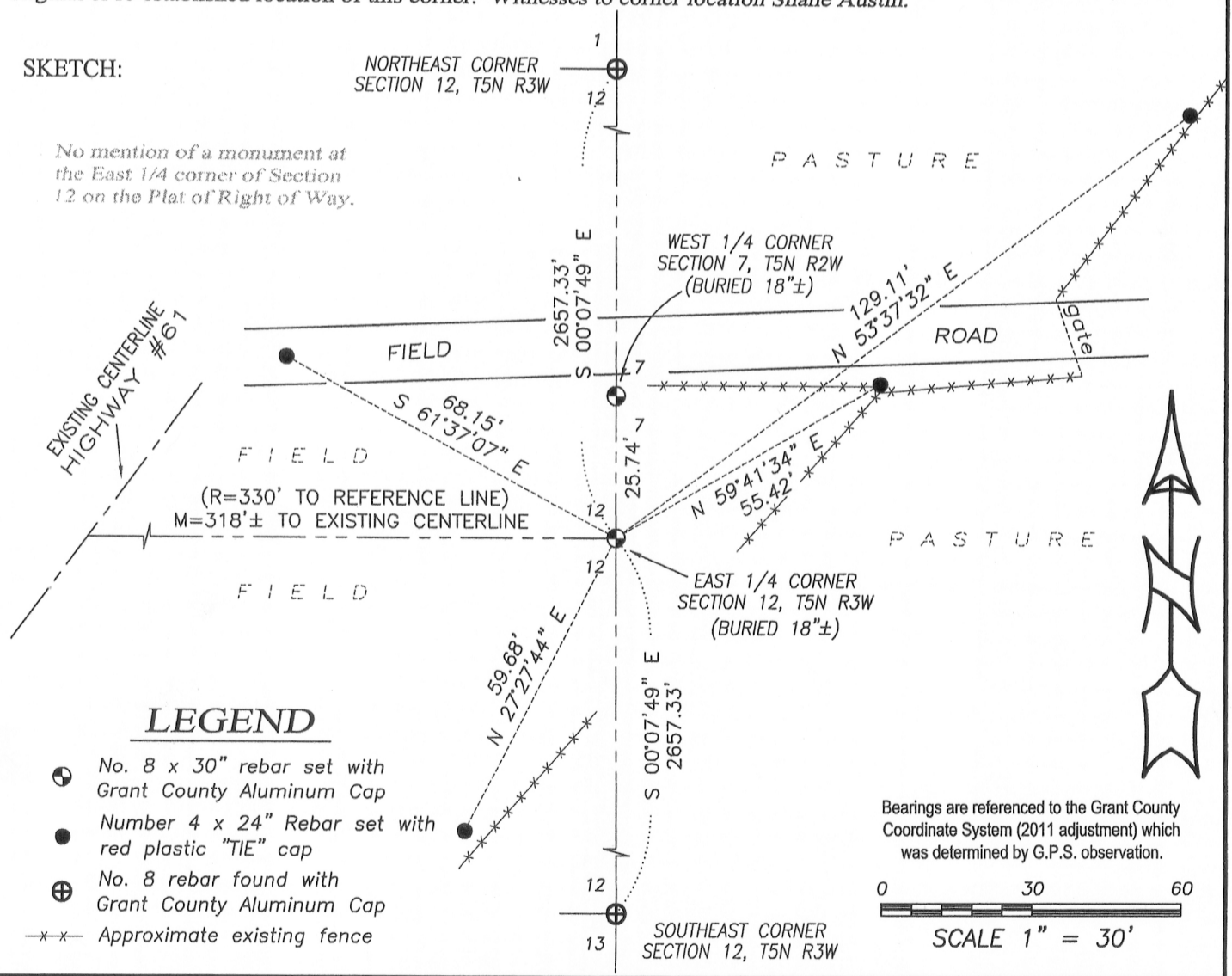
DESCRIPTION OF CORNER EVIDENCE FOUND:

No evidence of the corner was found. Corner was reset online and equidistant between the Northeast corner and the Southeast corner of Section 12. Corner location was verified by E.D.M. and G.P.S methods.

DESCRIPTION OF CORNER AND WITNESS MONUMENTS, references and accessories used to perpetuate the original or re-established location of this corner. Witnesses to corner location Shane Austin.

SKETCH:

No mention of a monument at the East 1/4 corner of Section 12 on the Plat of Right of Way.



4211 HWY 81 E, LANCASTER, WI 53813
 PHONE: 608-723-6363 FAX: 608-723-6702

JOB NO: 11S192-A
 G:\GRANTDOT\HWY61B
 H:\TIE\T5NR3W\40

FIELDBOOK: TDSR
 DRAWN BY: AJ AUSTIN
 CREW: SW AUSTIN