

U.S. PUBLIC LAND SURVEY MONUMENT RECORD - GRANT COUNTY, WI

Section 10, Town 5 North Range 3 West, Town of North Lancaster (a)

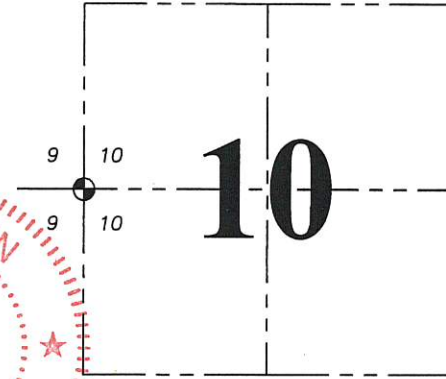
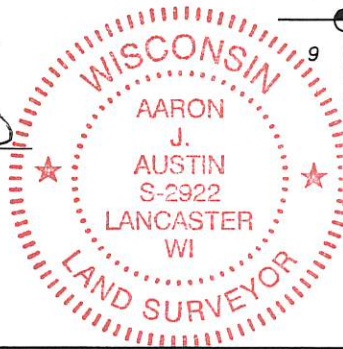
NOTE: This form is intended and designed to fulfill all requirements of the Wisconsin Administrative Code Chapter A-E 7.08, U.S. Public Land Survey Monument Record (3) (a) (b) (c) (d) (e) (f) (g) (h) (i).

CERTIFICATE: (i)

I, Aaron J. Austin, Wisconsin Professional Land Surveyor, do hereby certify that the corner location on this record was determined by me and/or under my direct supervision and that this U.S. Public Land Survey Monument Record is correct and complete to the best of my knowledge and belief.

Dated this 12th day of April, 2018.

Aaron J. Austin, S-2922



⊕ = CORNER LOCATION

HISTORY OF CORNER ESTABLISHMENT:

Harvey Parke set the original corner in 1832. Steven Rossman showed a found iron pin on a Survey dated 4-12-2001 filed, in Book 10, Page 18.

DESCRIPTION OF CORNER EVIDENCE FOUND: (b) (f) (g) (h)

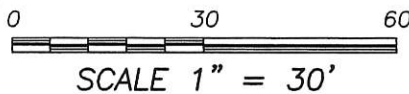
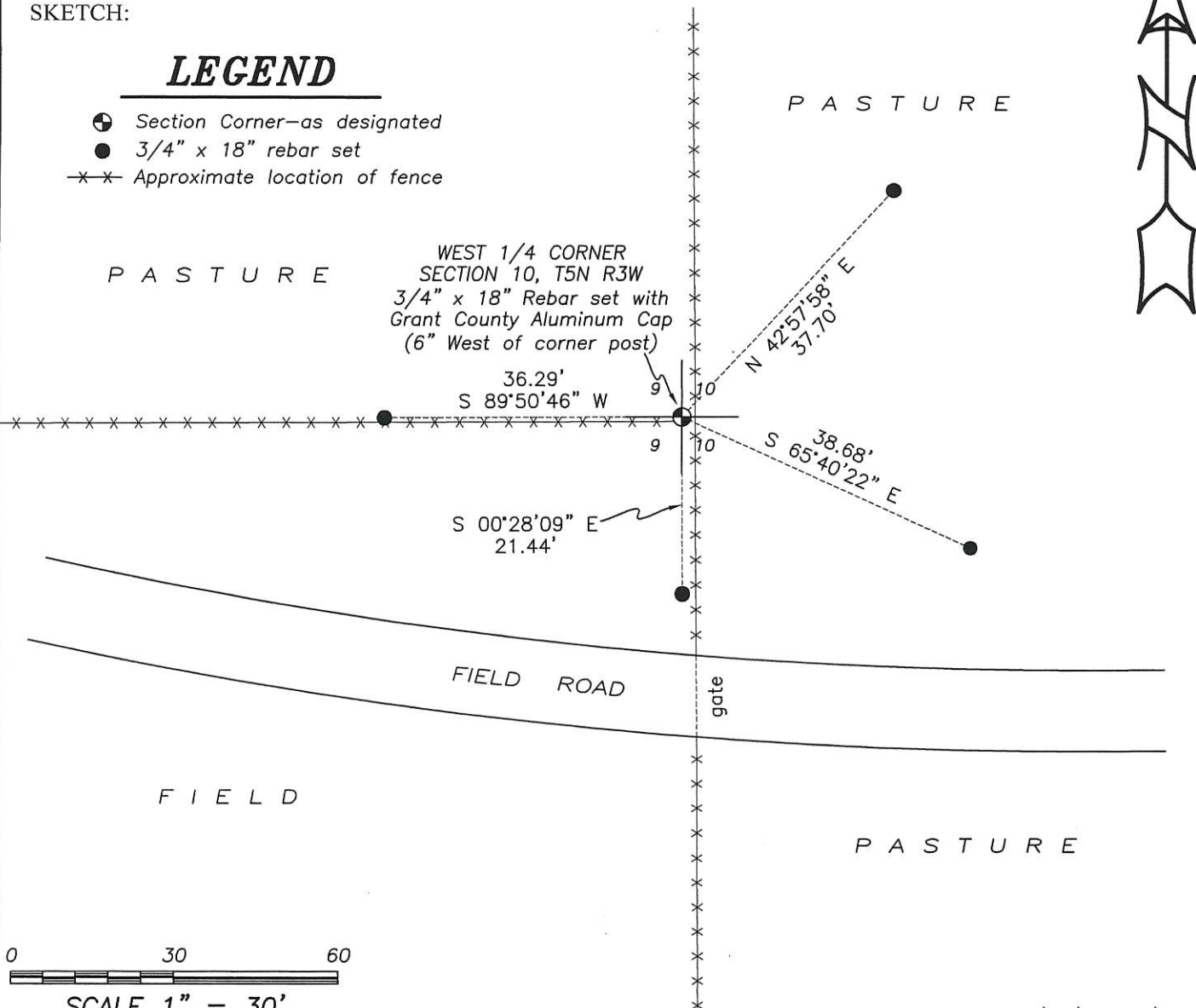
No iron pin was found per the Rossman Survey. I reset the corner at the recorded location of Rossman by using surveys filed in Book 10, Page 18 and Book 8, Page 39 and measuring the Northeast corner of Section 10 and the East 1/4 corner of Section 10. This location fit the occupied location very well. Corner location was verified with G.P.S. and E.D.M. methods

DESCRIPTION OF CORNER AND WITNESS MONUMENTS, references and accessories used to perpetuate the original or re-established location of this corner. (c) (d) (e) Witnesses to corner location Shane Austin.

SKETCH:

LEGEND

- ⊕ Section Corner—as designated
● 3/4" x 18" rebar set
-x-x- Approximate location of fence



SCALE 1" = 30'